

November 29, 2019

## Public advisory: Construction begins on Highway 29 realignment at Lynx Creek

Next week, BC Hydro will begin work on the realignment of Highway 29 at Lynx Creek, as part of the Site C project.

Activities will include clearing vegetation from the banks and nearby islands in the river, reinforcing parts of the shore with riprap (rocks and boulders), and building a new highway embankment. The gravel from the nearby islands in the Peace River will then be used for building other sections of Highway 29.

BC Hydro is working with the Ministry of Transportation and Infrastructure on Highway 29 construction. This work is being done to prepare for filling the Site C reservoir, which will widen the Peace River and cover parts of the existing highway. In total, we are building more than 30 km of highway in six different segments on Highway 29.

### What to expect:

- Work may take place up to 24 hours a day, 7 days a week.
- Increased construction-related traffic in the area, including trucks hauling logs, equipment, and highway materials.
- Traffic control personnel and signage.
- Occasional delays to traffic.
- Increased noise, dust and vibration.

We ask drivers to allow more time for their travel, and use caution near work areas.

### Learn more:

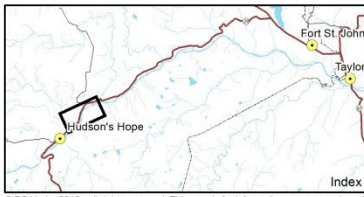
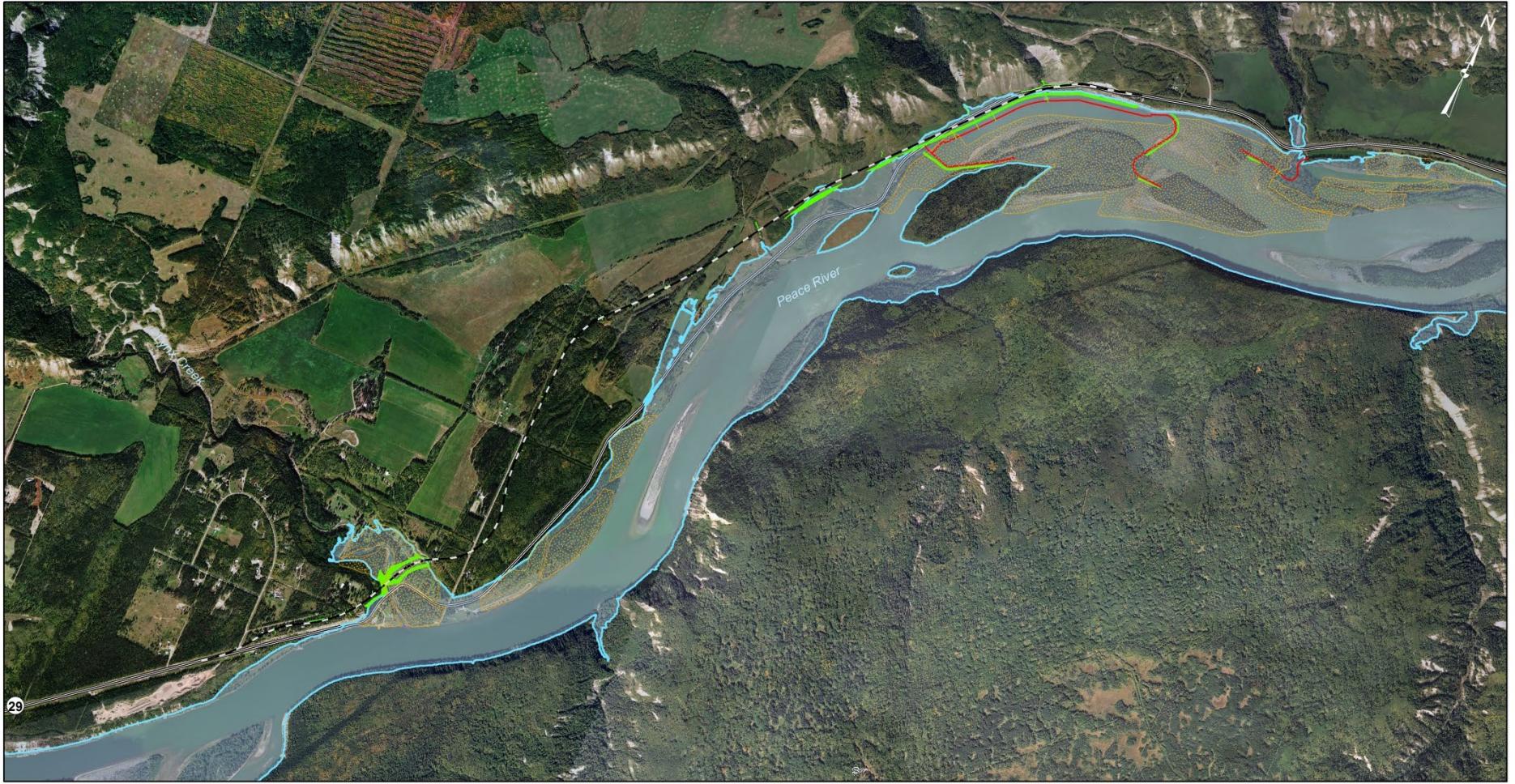
- [Highway 29 realignment](#)
- [Drivebc.com](#)

Toll-free: 1-877-217-0777

Email: [sitec@bchydro.com](mailto:sitec@bchydro.com)

Website: [sitecproject.com](http://sitecproject.com)

Twitter: [@sitecproject](https://twitter.com/sitecproject)



Map Notes:  
 1. Datum: NAD83  
 2. Projection: UTM Zone 10N  
 3. Base Data: Province of B.C.  
 4. Imagery: ESRI Online Basemaping and orthophotos created from 1:40,000 photos taken Sep. 10th 2007.

- Legend**
- New Highway 29
  - Gravel source
  - Rock reinforcement (riprap)
  - Access Roads
  - Existing Highway 29
  - Maximum Normal Reservoir Level (461.8 m)

1:26,000 0 0.25 0.5 1 km

**BC Hydro**

**Highway 29 construction: Lynx Creek**

Date	Nov. 19, 2019	DWG NO	1016-N11-00695	R 0
------	---------------	--------	----------------	-----

Construction of the Site C Clean Energy Project is subject to required regulatory and permitting approvals.