



Transport Canada Transports Canada

Navigation Protection Program
Suite 610, 800 Burrard Street
Vancouver B.C. V6Z 2J8

Your file

Our file
2017-500078

May 18, 2017

BC Hydro
Suite 600 - Four Bentall Ctr
1055 Dunsmuir St. PO Box 49260
Vancouver, BC V7X 1V5

Attention: Karen von Muehldorfer

RE: Notice to the Minister\permission to proceed under the *Navigation Protection Act* for Fish Habitat Compensation Structures, located at 56° 11' 43.14" N x 120° 50' 34.50" W, Peace River, Peace River and side channel C at Old Fort, in the Province of British Columbia

The Minister of Transport has determined that your work is not likely to substantially interfere with navigation.

Therefore, your work is permitted under the NPA s.9(1) Construction, and you may proceed pursuant to the attached plans (8) in accordance with the following terms and conditions:

1. The NPA Approval and its Terms and Conditions shall be posted at the dam site office.
2. As built plans of the works are to be forwarded to Transport Canada upon completion of the project.
3. The proponent is required to conduct a post-construction survey of the Peace River mainstem portion of the work and submit the results to Transport Canada within 6 months of completion of the work.
4. The proponent shall conduct a survey of the channels 5 years after the dam begins operation and shall submit that survey to Transport Canada for review. Survey will confirm existing depth, any significant infilling and existing or potential bank failures.
5. In the event that the operation of the above works is terminated prior to completion, it will be the proponent's responsibility to remove the works and associated equipment in its entirety from the waterway including any anchors and pilings. The banks and bed of the waterway disturbed by the works shall be contoured to match the local conditions as required.
6. Provide adequate information about the fish habitat enhancement work using the Boater Communications Protocol, and the following actions:
 - For the duration of inwater works, post a notice at the Peace Island Park boat launch
 - On the owner website, on a web page related to the project

7. Upon completion of the work and removal of equipment and temporary works, provide adequate information about the fish habitat enhancement channels layout and depths using the Boater Communications Protocol, and the following actions:
 - For 1 year, posted notice at the Peace Island Park, boat launch
 - Handout or mail to every resident of Old Fort
 - On the owner website, on a page related to the project for a minimum of 1 year
8. A safety boat shall be manned and monitoring the river at the site of the work while equipment is working in the mainstem of the Peace River
9. No equipment shall be moored or secured with cables unless the equipment is in an area isolated upstream and downstream by berms and no boat traffic is able to use that portion of the waterway.
10. Install and maintain a yellow flashing light on the outermost extremity of any equipment, construction machinery or barges anchored or left in or on the waterway overnight. The lights shall be visible upstream and downstream.
11. Any temporary structures (pilings, causeways, cofferdams or berms) into the main stem of the Peace River to support equipment or for access will require the following conditions;
 - Shall mark the works every 50m with orange high visibility markers to be seen from both upstream and downstream
 - Install and maintain flashing yellow lights every 50m on the works. The lights shall be in operation in periods of darkness or limited visibility and to be seen from both upstream and downstream
 - Inspect and maintain weekly all lights and markings to ensure function and correct positioning
12. If the isolation berms are wetted on the river side, the following conditions apply;
 - Shall mark the berms with orange high visibility markers to be seen from the wetted side
 - Install and maintain a flashing yellow light on berms. The lights shall be in operation in the periods of darkness or limited visibility
 - Inspect and maintain weekly all lights and markings to ensure function and correct positioning
13. Install and maintain warning signs on both banks of the river at locations, approximately 1.3 km downstream of Old Fort. Signs shall be a minimum of 72" x 48", with a white background and black lettering, with text as outlined below

WARNING INSTREAM WORKS AHEAD

14. Install and maintain warning sign on Peace River Construction Bridge facing upstream. Sign shall be a minimum of 72" x 48", a white background with black lettering, with text as outlined below

WARNING INSTREAM WORKS AHEAD

The owner is responsible to ensure the temporary construction works are designed and maintained to withstand local weather conditions and the wash of vessels transiting the area.

Pursuant to Sec. 34 of the Navigation Protection Act, the owner shall provide unimpeded access to the Minister or their representatives for inspection purposes.

Pursuant to Sec. 5 of the Navigable Waters Works Regulations, no person shall permit any tools, equipment, vehicles, temporary structures or parts thereof used or maintained for the purpose of

building or placing a work in a navigable water to remain in such water after the completion of the project.

Pursuant to Sec. 6 of the Navigable Waters Works Regulations, where a work or a portion of a work that is being constructed or maintained in a navigable water causes debris or other material to accumulate on the bed or the surface of such water, the owner of that work or portion of that work shall cause the debris or other material to be removed to the satisfaction of the minister.

This permission relates only to the effect of your work on navigation under the NPA and does not grant any rights related to the ownership of the bed of the waterway.

It is the owner's responsibility to comply with any other applicable laws and regulations.

Please note that the NPA, amongst other obligations, requires the owner to immediately notify the Minister if his work causes or is likely to cause serious or imminent danger to navigation and take reasonable measures to remediate the danger to navigation (section 12 of the NPA).

Should you have any questions, please do not hesitate to contact our office in Vancouver by phone at (604) 775-8867 or by e-mail at NPPPAC-PPNPAC@tc.gc.ca.

Respectfully,



Colin Parkinson
Navigation Protection Program Officer
Programs Group
Transport Canada
Pacific Region

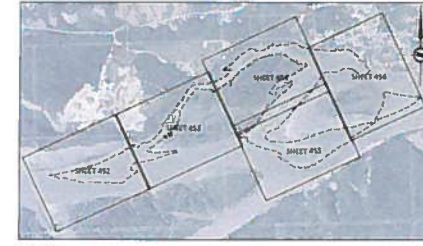
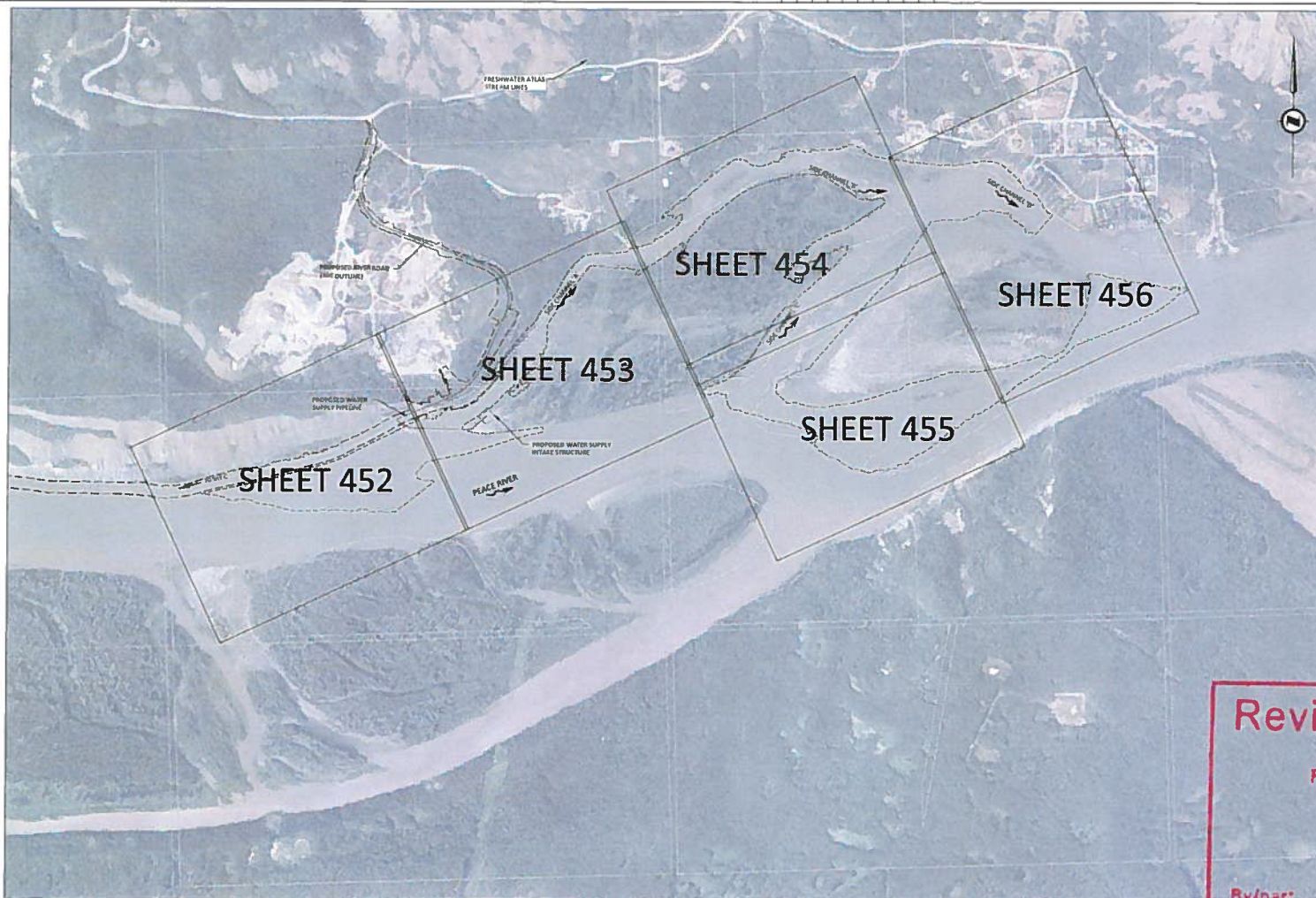
CP/co

cc: DFO
Brian.Naito@dfo-mpo.gc.ca
Stephanie.Major@dfo-mpo.gc.ca

FLNRO - Keith.Hansen@gov.bc.ca

CEAA - Compliance.Conformite@ceaa-acee.gc.ca

First Nation's



KEY MAP
SCALE 1:1000



Reviewed / Examiné

Page 1 of 8
 2017-500078
 MAY 08 2017

By/par:

COLIN PARKINSON
 Navigation Protection Program /
 Programme de protection de la navigation

1. BAAZERY BC HYDRO (2013)
2. TOPOGRAPHIC SUPPLEMENTED WITH BC HYDRO LIDAR (2011)
3. BATHYMETRIC SURVEY OUTSIDE OF BMC 2015 SUPPLEMENTED WITH KNIGHT PRESOID (2011)
4. ALL DIMENSIONS ARE IN METERS UNLESS OTHERWISE NOTED
5. ALL ELEVATIONS ARE ARE TO THE GEODETIC SURVEY OF CANADA DATUM
6. ALL SUSP. IN UNLESS OTHERWISE NOTED.
7. DIMENSIONS TO BE READ IN CONJUNCTION WITH CONSTRUCTION SPECIFICATIONS

NO	REVISIONS	DATE	DESIGNED	DWG. CHK	DFTO CHK	HYD. CHK	STR. CHK	MECH. CHK	CEP. CHK	PROP. FILED	REV	ACPT	REV	CH	STR	MECH	CEP	ELEC
5	ISSUED FOR CONSTRUCTION w/ REVISIONS	03 NOV 2016	A. BLEZY	BMC	KEH	AMB					AMB	BMC	DRSH	JAG				
4	ISSUED FOR CONSTRUCTION	28 FEB 2016	A. BLEZY	BMC	KEH	AMB					AMB	BMC	DRSH	BMC				
3	ISSUED FOR REVIEW	04 DEC 2015	J. GLAWDEL	BMC	KEH	AMB					JAG	BMC	DFTO	KEH				
2	UPDATED WITH VALUE ENGINEERING OPTIONS	25 SEPT 2015	J. GLAWDEL	BMC	SH	EXG					JAG	BMC	DFTO	AMB				
1	UPDATED WITH COMMENTS	13 AUG 2015	J. GLAWDEL	BMC	KEH	EXG					JAG	BMC	RESP					
0	ISSUED FOR REVIEW	06 APR 2015	J. GLAWDEL	BMC	KEH	EXG					JAG	BMC						



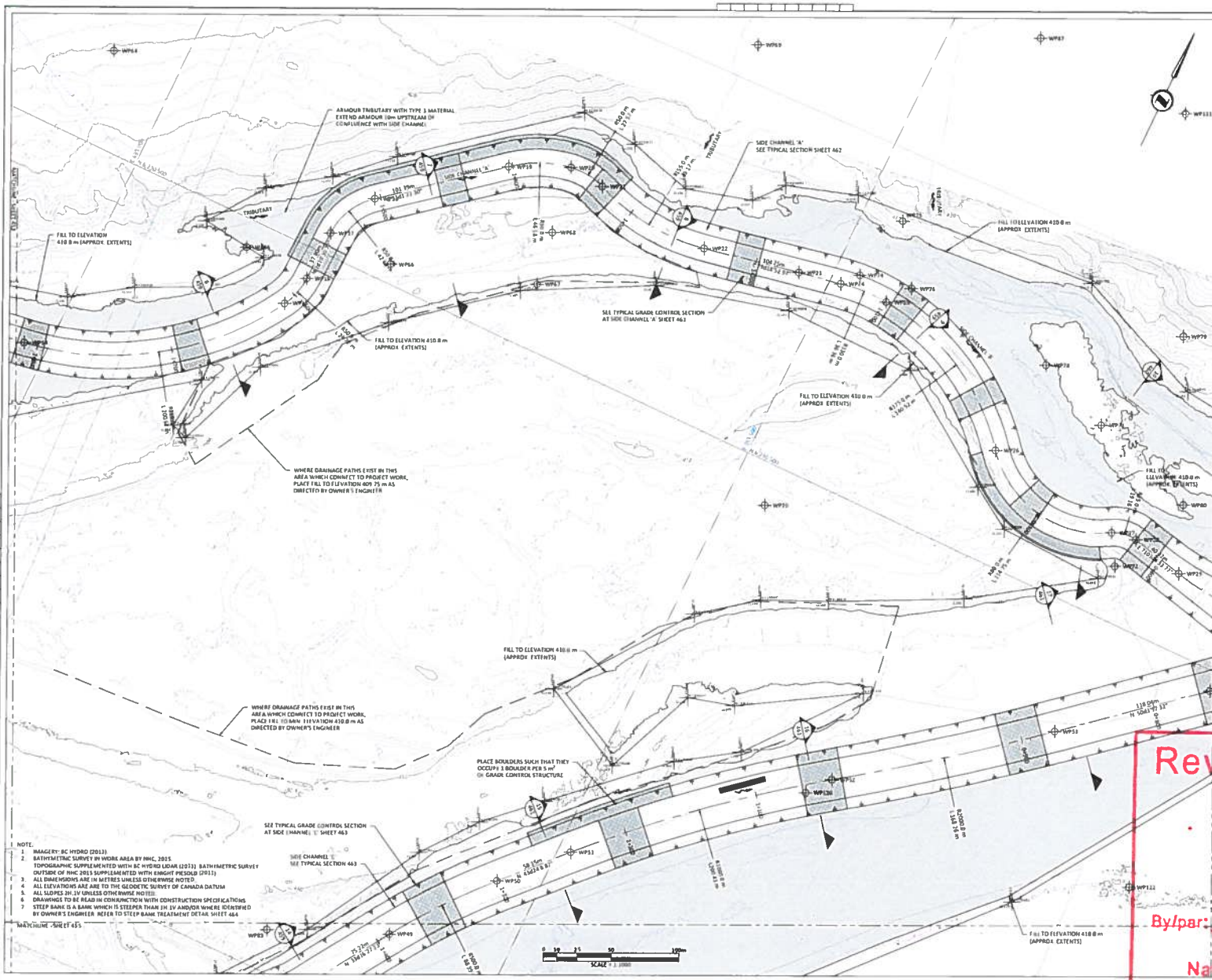
PRELIMINARY
NOT FOR
CONSTRUCTION

SITE C CLEAN ENERGY PROJECT
 GENERAL PLANT
 FISH HABITAT MITIGATION
 DOWNSTREAM - SITE 109L
 DETAILED DESIGN
 SITE LAYOUT

REF #	DRAWING NUMBER	TITLE	REF #	DRAWING NUMBER	TITLE

NOT TO BE REPRODUCED WITHOUT THE PERMISSION OF BC HYDRO

2016/11/03 10:58 AM C:\Users\jglawdel\Documents\1000034 - Site C (MAY 16) - GEN\1000034 - 006 - 1016-L13-451 - 487254.rvt



WORKPOINT TABLE			WORKPOINT TABLE		
WORKPOINT	EASTING	NORTHING	DESCRIPTION	WORKPOINT	DESCRIPTION
WP14	613482.61	6230346.08	Tangent Point	WP78	634173.45 Centre Point
WP15	613449.83	6230556.46	Tangent Point	WP79	634532.66 Centre Point
WP16	613650.91	6230377.84	Tangent Point	WP80	634067.33 Centre Point
WP17	613615.94	6230515.73	Tangent Point	WP81	634662.52 Centre Point
WP18	613670.46	6230552.68	Tangent Point	WP82	634331.51 Centre Point
WP19	613749.28	6230616.46	Tangent Point	WP83	633831.45 Centre Point
WP20	613791.31	6230636.30	Tangent Point	WP84	634055.54 Centre Point
WP21	613818.36	6230632.23	Tangent Point	WP85	634054.02 Centre Point
WP22	613905.88	6230632.35	Tangent Point	WP86	634474.42 Centre Point
WP23	613978.77	6230636.73	End A/Side B. C	WP87	634671.22 Centre Point
WP24	614008.30	6230642.68	Tangent Point	WP88	634671.22 Centre Point
WP25	614044.50	6230644.37	Tangent Point	WP89	634147.12 Centre Point
WP26	614164.88	6230679.44	Tangent Point	WP90	634147.12 Centre Point
WP27	614268.36	6230560.72	Tangent Point	WP91	634054.02 Centre Point
WP28	614326.21	6230554.46	Tangent Point	WP92	634054.02 Centre Point
WP29	614326.21	6230554.46	Tangent Point	WP93	634054.02 Centre Point
WP30	614326.21	6230554.46	Tangent Point	WP94	634054.02 Centre Point
WP31	614326.21	6230554.46	Tangent Point	WP95	634054.02 Centre Point
WP32	614326.21	6230554.46	Tangent Point	WP96	634054.02 Centre Point
WP33	614326.21	6230554.46	Tangent Point	WP97	634054.02 Centre Point
WP34	614326.21	6230554.46	Tangent Point	WP98	634054.02 Centre Point
WP35	614326.21	6230554.46	Tangent Point	WP99	634054.02 Centre Point
WP36	614326.21	6230554.46	Tangent Point	WP100	634054.02 Centre Point
WP37	614326.21	6230554.46	Tangent Point	WP101	634054.02 Centre Point
WP38	614326.21	6230554.46	Tangent Point	WP102	634054.02 Centre Point
WP39	614326.21	6230554.46	Tangent Point	WP103	634054.02 Centre Point
WP40	614326.21	6230554.46	Tangent Point	WP104	634054.02 Centre Point
WP41	614326.21	6230554.46	Tangent Point	WP105	634054.02 Centre Point
WP42	614326.21	6230554.46	Tangent Point	WP106	634054.02 Centre Point
WP43	614326.21	6230554.46	Tangent Point	WP107	634054.02 Centre Point
WP44	614326.21	6230554.46	Tangent Point	WP108	634054.02 Centre Point
WP45	614326.21	6230554.46	Tangent Point	WP109	634054.02 Centre Point
WP46	614326.21	6230554.46	Tangent Point	WP110	634054.02 Centre Point
WP47	614326.21	6230554.46	Tangent Point	WP111	634054.02 Centre Point
WP48	614326.21	6230554.46	Tangent Point	WP112	634054.02 Centre Point
WP49	614326.21	6230554.46	Tangent Point	WP113	634054.02 Centre Point
WP50	614326.21	6230554.46	Tangent Point	WP114	634054.02 Centre Point
WP51	614326.21	6230554.46	Tangent Point	WP115	634054.02 Centre Point
WP52	614326.21	6230554.46	Tangent Point	WP116	634054.02 Centre Point
WP53	614326.21	6230554.46	Tangent Point	WP117	634054.02 Centre Point
WP54	614326.21	6230554.46	Tangent Point	WP118	634054.02 Centre Point
WP55	614326.21	6230554.46	Tangent Point	WP119	634054.02 Centre Point
WP56	614326.21	6230554.46	Tangent Point	WP120	634054.02 Centre Point
WP57	614326.21	6230554.46	Tangent Point	WP121	634054.02 Centre Point
WP58	614326.21	6230554.46	Tangent Point	WP122	634054.02 Centre Point

NOTE

1. IMAGE BY: BC HYDRO (2013)
2. BATHYMETRIC SURVEY BY WORCE AREA BY FMC, 2013
3. TOPOGRAPHIC SUPPLEMENTED WITH BC HYDRO LEAK (2013) BATHYMETRIC SURVEY OUTSIDE OF FMC 2013 SUPPLEMENTED WITH EIGHTY PRECISE (2013)
4. ALL DIMENSIONS ARE IN METRES UNLESS OTHERWISE NOTED
5. ALL ELEVATIONS ARE TO THE GEODETIC SURVEY OF CANADA DATUM
6. ALL SLOPES IN % UNLESS OTHERWISE NOTED
7. DRAWINGS TO BE MADE IN CONJUNCTION WITH CONSTRUCTION SPECIFICATIONS
8. STEEP BANK IS A BANK WHICH IS STEEPER THAN 1H:1V AND/OR WHERE IDENTIFIED BY OWNER'S ENGINEER. REFER TO STEEP BANK TREATMENT DETAIL SHEET 454

SCALE: 1" = 300'

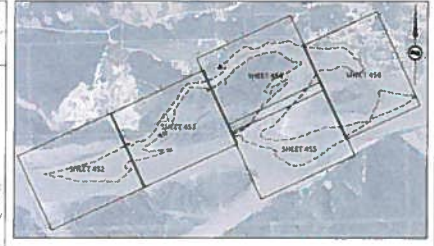
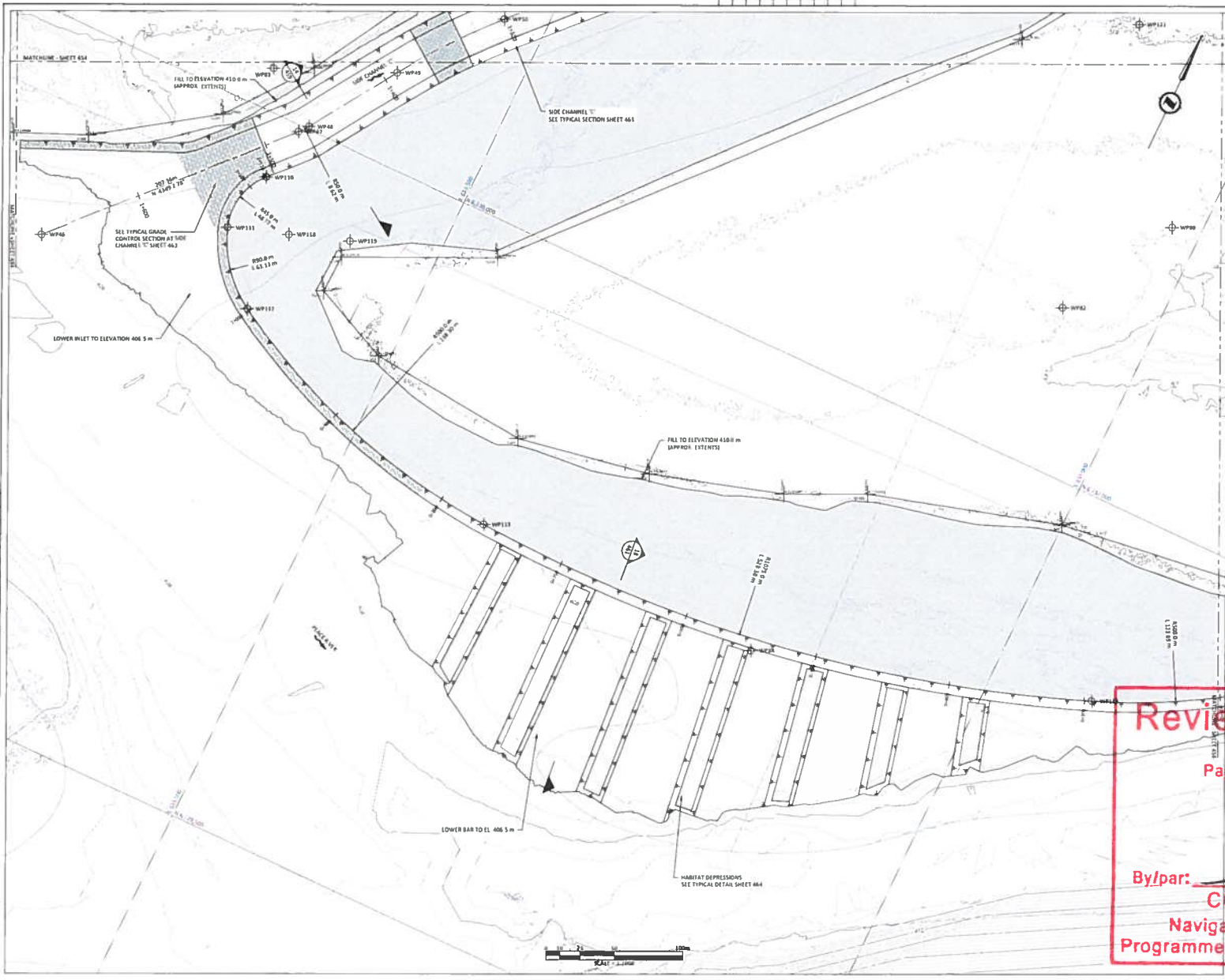
Reviewed / Examiné
 Page 2 of 18
 2017-500078
 MAY 08 2017
 By/par:
COLIN PARKINSON
 Navigation Protection Program /
 Programme de protection de la navigation

REV#	DRAWING NUMBER	TITLE	REV#	DRAWING NUMBER	TITLE
1	1016-L13-45A	SIDE CHANNEL LAYOUT	1	1016-L13-45A	SIDE CHANNEL LAYOUT
2	1016-L13-45B	SIDE CHANNEL LAYOUT	2	1016-L13-45B	SIDE CHANNEL LAYOUT
3	1016-L13-45C	SIDE CHANNEL LAYOUT	3	1016-L13-45C	SIDE CHANNEL LAYOUT
4	1016-L13-45D	SIDE CHANNEL LAYOUT	4	1016-L13-45D	SIDE CHANNEL LAYOUT

REV#	DATE	DESIGNED	DRAWN	CHECKED	IN CHARGE	APPROVED
1	09 NOV 2016	A. BLEZY	BMC	KEH	AAS	AMB
2	29 FEB 2016	A. BLEZY	BMC	KEH	AAS	AMB
3	04 DEC 2015	J. GLAWDEL	BMC	BAH	BIG	AMB
4	15 SEPT 2015	J. GLAWDEL	BMC	BKH	BIG	AMB
5	11 AUG 2015	J. GLAWDEL	BMC	KEH	JFG	AMB
6	06 JUN 2015	J. GLAWDEL	BMC	KEH	JFG	AMB

\\www1000\proj\proj\1016-L13-45\1016-L13-45A.dwg: C:\NAV\1016-L13-45.dwg - 487 (2016)

NOT TO BE REPRODUCED WITHOUT THE PERMISSION OF BC HYDRO



KEY MAP
SCALE 1:5000

WORKPOINT TABLE			
WORKPOINT	EASTING	NORTHING	DESCRIPTION
WP46	633729.38	6229647.55	Tangent Point
WP47	6338679.81	6229995.39	Tangent Point
WP48	633873.25	6230002.16	Tangent Point
WP49	633914.52	6230063.05	Tangent Point
WP50	633969.28	6230134.28	Tangent Point
WP75	634029.61	6230793.60	Centre Point
WP76	634046.99	6230861.33	Centre Point
WP77	634078.48	6230965.19	Centre Point
WP78	634171.45	6230862.09	Centre Point
WP79	634213.66	6230714.75	Centre Point
WP80	634307.35	6230601.64	Centre Point
WP82	634451.51	6230518.21	Centre Point
WP83	634531.45	6230529.50	Centre Point
WP84	634632.55	6229790.71	Centre Point
WP87	634661.54	6230889.04	Centre Point
WP88	634560.73	6230454.02	Centre Point
WP89	634479.42	6230283.99	Centre Point
WP10	633860.67	6239955.31	Start Top of Bank
WP11	633850.84	6239909.95	Tangent Point
WP12	633889.69	6239861.82	Tangent Point
WP13	634115.02	6239781.49	Tangent Point
WP14	634155.05	6239881.91	Tangent Point
WP18	633993.44	6239914.48	Centrepoint
WP19	633930.03	6239930.96	Centrepoint
WP20	634147.12	6238290.48	Centrepoint
WP21	634384.04	6238064.29	Centrepoint
WP22	634393.18	6238120.86	Centrepoint

Reviewed / Examiné

Page 3 of de 8

2017-500078

MAY 08 2017

By/par: COLIN PERKINS

Navigation Protection Program
Programme de protection de la navigation

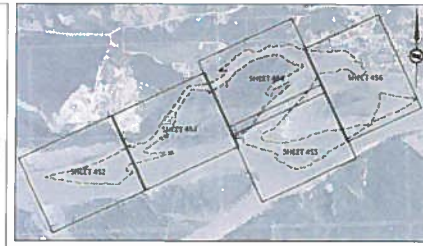
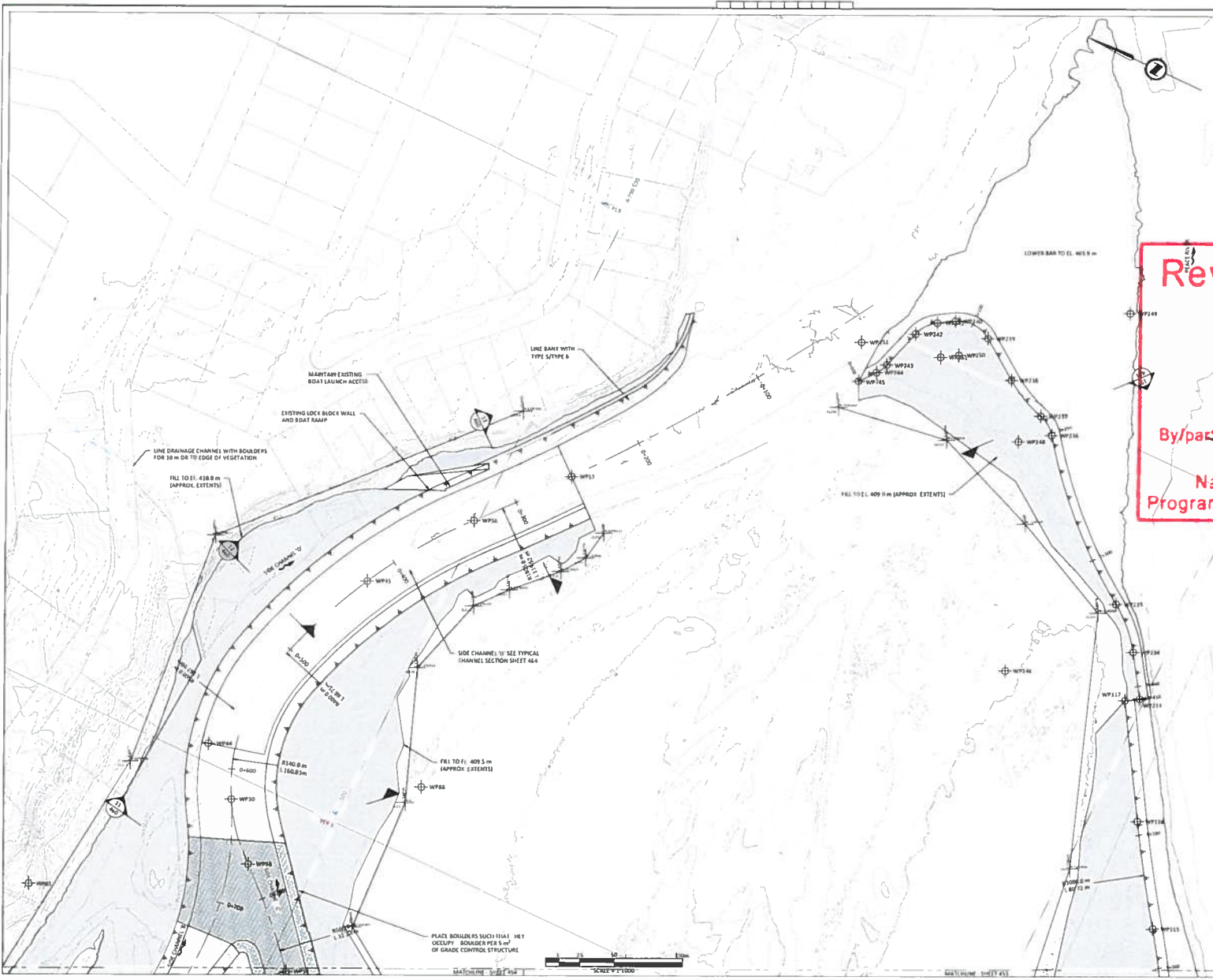
LEGEND	
	TYPE 1 MATERIAL
	TYPE 2 MATERIAL
	PRIVATE PROPERTY PARCEL
	CUT SLOPE
	MATCHLINE
	CLEARING LIMITS

NO	REVISIONS	DATE	DESIGNED	DRAWN	CHECKED	IN CHARGE	APP'D	DATE	REVISIONS
1	ISSUED FOR CONSTRUCTION W/ REVISIONS	03 NOV 2016	A. BLEZY	BAC	REN	AMF			
2	ISSUED FOR CONSTRUCTION	29 FEB 2016	A. BLEZY	BMC	REN	AMF			
3	ISSUED FOR REVIEW	04 DEC 2015	J.GLAWDEL	BMC	REN	AMF			
4	UPDATES WITH VALUE ENGINEERING OPTIONS	15 SEPT 2015	J.GLAWDEL	BMC	REN	AMF			
5	UPDATES WITH COMMENTS	11 AUG 2015	J.GLAWDEL	BMC	REN	AMF			
6	ISSUED FOR REVIEW	06 JUL 2015	J.GLAWDEL	BMC	REN	AMF			

	<p>PRELIMINARY NOT FOR CONSTRUCTION</p>	<p>SITE C CLEAN ENERGY PROJECT GENERAL PLANT FISH HABITAT MITIGATION DOWNSTREAM - SITE 109L DETAILED DESIGN GRAVEL BAR EXCAVATION</p>
<p>DATE: 03 NOV 2016</p>	<p>DWG NO: 1016-L13-455</p>	<p>SCALE: AS SHOWN</p>

10/11/2016 10:58:11 AM
 C:\PROJECTS\2016\1016-L13-455\1016-L13-455.dwg
 487304949

NOT TO BE REPRODUCED WITHOUT THE PERMISSION OF BC HYDRO



Reviewed / Examiné

Page 4 of 8

MAY 0 2017

By: par COLIN PARKINSON

Navigation Protection Program /
Programme de protection de la navigation

WORKPOINT	EASTING	NORTHING	DESCRIPTION
WP45	634671.05	6230355.10	End C
WP54	633384.49	6230481.65	Tangent Point
WP55	633384.49	6230481.65	Tangent Point
WP56	633384.49	6230481.65	Tangent Point
WP57	633384.49	6230481.65	Tangent Point
WP58	633384.49	6230481.65	Tangent Point
WP59	633384.49	6230481.65	Tangent Point
WP60	633384.49	6230481.65	Tangent Point
WP61	633384.49	6230481.65	Tangent Point
WP62	633384.49	6230481.65	Tangent Point
WP63	633384.49	6230481.65	Tangent Point
WP64	633384.49	6230481.65	Tangent Point
WP65	633384.49	6230481.65	Tangent Point
WP66	633384.49	6230481.65	Tangent Point
WP67	633384.49	6230481.65	Tangent Point
WP68	633384.49	6230481.65	Tangent Point
WP69	633384.49	6230481.65	Tangent Point
WP70	633384.49	6230481.65	Tangent Point
WP71	633384.49	6230481.65	Tangent Point
WP72	633384.49	6230481.65	Tangent Point
WP73	633384.49	6230481.65	Tangent Point
WP74	633384.49	6230481.65	Tangent Point
WP75	633384.49	6230481.65	Tangent Point
WP76	633384.49	6230481.65	Tangent Point
WP77	633384.49	6230481.65	Tangent Point
WP78	633384.49	6230481.65	Tangent Point
WP79	633384.49	6230481.65	Tangent Point
WP80	633384.49	6230481.65	Tangent Point
WP81	633384.49	6230481.65	Tangent Point
WP82	633384.49	6230481.65	Tangent Point
WP83	633384.49	6230481.65	Tangent Point
WP84	633384.49	6230481.65	Tangent Point
WP85	633384.49	6230481.65	Tangent Point
WP86	633384.49	6230481.65	Tangent Point
WP87	633384.49	6230481.65	Tangent Point
WP88	633384.49	6230481.65	Tangent Point
WP89	633384.49	6230481.65	Tangent Point
WP90	633384.49	6230481.65	Tangent Point
WP91	633384.49	6230481.65	Tangent Point
WP92	633384.49	6230481.65	Tangent Point
WP93	633384.49	6230481.65	Tangent Point
WP94	633384.49	6230481.65	Tangent Point
WP95	633384.49	6230481.65	Tangent Point
WP96	633384.49	6230481.65	Tangent Point
WP97	633384.49	6230481.65	Tangent Point
WP98	633384.49	6230481.65	Tangent Point
WP99	633384.49	6230481.65	Tangent Point
WP100	633384.49	6230481.65	Tangent Point

- NOTE:
1. IMAGERY: BC HYDRO (D13).
 2. BATHYMETRIC SURVEY IN WORK AREA BY RMC, 2015 TOPOGRAPHIC SUPPLEMENTED WITH BC HYDRO LIDAR (D13).
 3. BATHYMETRIC SURVEY OUTSIDE OF RMC 2015 SUPPLEMENTED WITH ANCHOR PEGS/D 10311.
 4. ALL DIMENSIONS ARE IN METRES UNLESS OTHERWISE NOTED.
 5. ALL ELEVATIONS ARE TO THE GEODETIC SURVEY OF CANADA DATUM.
 6. ALL SLOPES ARE IN 1V UNLESS OTHERWISE NOTED.
 7. DRAWINGS TO BE READ IN CONJUNCTION WITH CONSTRUCTION SPECIFICATIONS.
 8. STEEP BANK IS A BANK WHICH IS STEEPER THAN 1H IN 4V AND/OR WHERE IDENTIFIED BY OWNER'S ENGINEER. REFER TO STEEP BANK TREATMENT DETAIL SHEET 464.

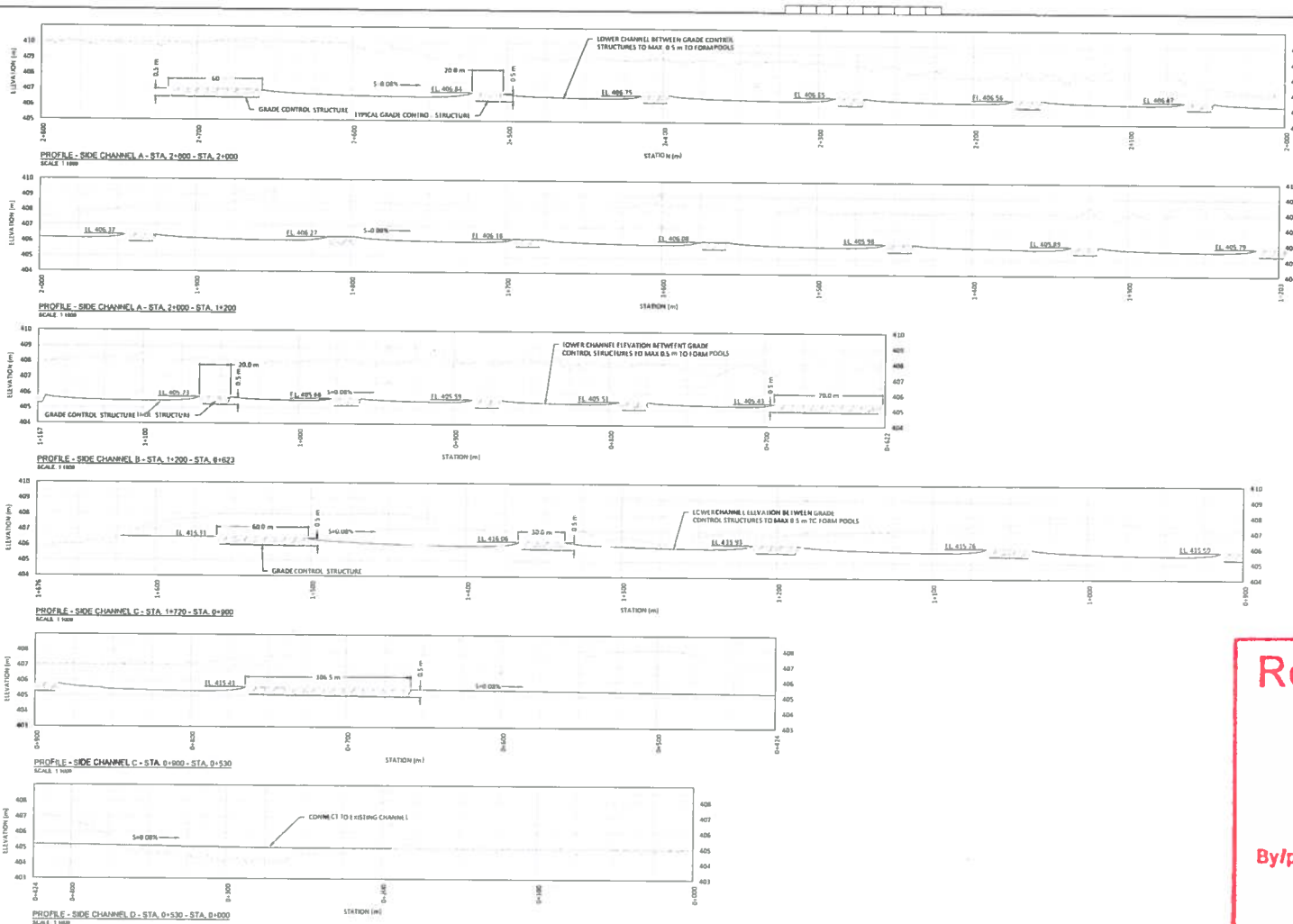
LEGEND	
	TYPE '1' MATERIAL
	TYPE '2' MATERIAL
	TYPE '3' MATERIAL
	CUT SLOPE
	MATCHLINE
	PRIVATE PROPERTY PARCEL
	CLEARING LIMITS

NO	REVISIONS	DATE	DESIGNED	DRAWN	CHECKED	INSP	INSP	INSP	INSP	INSP	INSP	INSP	INSP	INSP	INSP	INSP
5	ISSUED FOR CONSTRUCTION W/ REVISIONS	03 NOV 2016	A. BLEZYT	BMC	REN	AMB										
4	ISSUED FOR CONSTRUCTION	29 FEB 2016	A. BLEZYT	BMC	REN	AMB										
3	ISSUED FOR REVIEW	04 DEC 2015	J. ELAWDEL	BMC	REN	AMB										
2	UPDATED WITH VALUIC ENGINEERING OPTIONS	25 SEPT 2015	J. ELAWDEL	BMC	REN	JSG										
1	UPDATED WITH COMMENTS	21 AUG 2015	J. ELAWDEL	BMC	REN	JSG										
0	ISSUED FOR REVIEW	06 JUN 2015	J. ELAWDEL	BMC	REN	JSG										

PRELIMINARY NOT FOR CONSTRUCTION			
SITE C CLEAN ENERGY PROJECT GENERAL PLANT FISH HABITAT MITIGATION DOWNSTREAM - SITE 109L DETAILED DESIGN SIDE CANNEL 'E' ST. 0 + 000 TO 0+750			
DATE:	03 NOV 2016	SCALE:	1:1000
PROJECT NO:	1016-L13-456	SHEET NO:	40
DESIGNER:	A. BLEZYT	CHECKER:	B. CHILDECKA

10/16/16 10:56 AM (Printed) 10/16/16 10:56 AM (Printed) SHEET NO. 40 OF 40

\\na-prod-nas\proj\010\101634_01.ctb - 10/11/2016 12:57:45 PM - 487/284/487



Reviewed / Examiné

Page 5 of de 5

2017-500078
MAY 08 2017

By/par: *(Signature)*
COLIN PARKINSON
Navigation Protection Program /
Programme de protection de la navigation

LEGEND

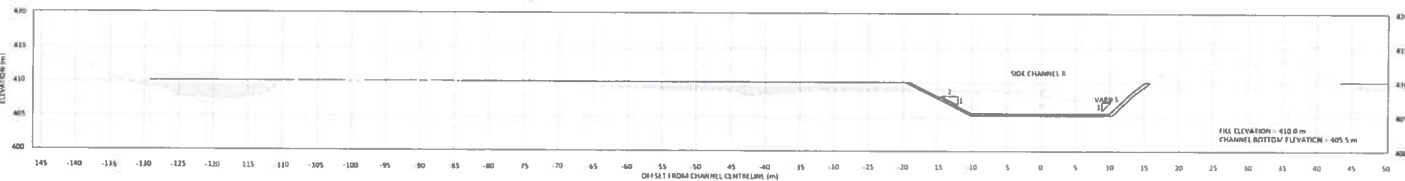
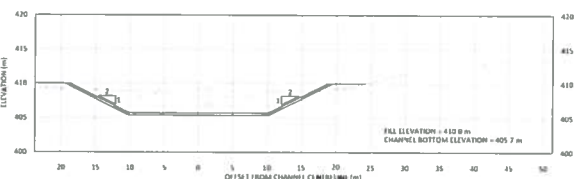
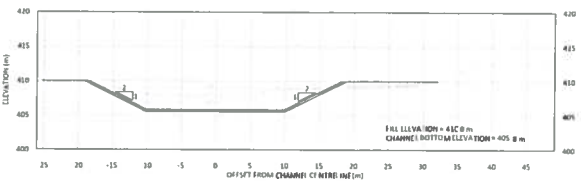
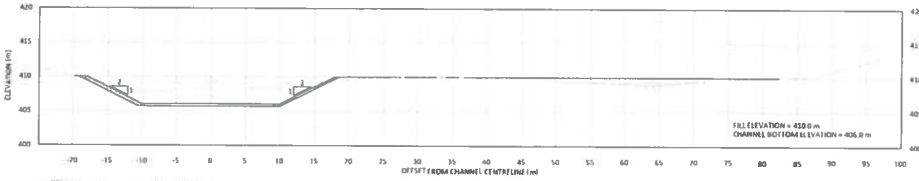
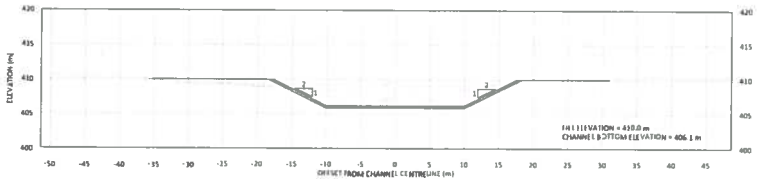
 EXISTING GROUND
 PROPOSED CHANNEL BOTTOM
 THIMBLEWING
 MAX OPERATIONAL WATER LEVEL (CL = 2000 m³/s)
 MIN OPERATIONAL WATER LEVEL (CL = 130 m³/s)
 TYPE 1 MATERIAL

 BGC hydro	
SITE C CLEAN ENERGY PROJECT GENERAL PLANT FISH HABITAT MITIGATION DOWNSTREAM - SITE 109L DETAILED DESIGN CHANNEL PROFILES	
PRELIMINARY NOT FOR CONSTRUCTION	DATE: 03 NOV 2016 SHEET NO: 1016-L13-457 SCALE: AD 5

NO	REVISIONS	DATE	DESIGNED	DRAWN	CHECKED	APP'D	REV	REV	REV	REV	REV	REV	REV	REV	REV	REV
5	ISSUED FOR CONSTRUCTION W/ REVISIONS	03 NOV 2016	A. BLEZNY	BMC	LEH	AMB						AMB	BMC	DPSON	JEG	
4	ISSUED FOR CONSTRUCTION	29 FEB 2016	A. BLEZNY	BMC	LEH	AMB						AMB	BMC	DPSON	BMC	
3	ISSUED FOR REVIEW	04 DEC 2015	J. GLAWDEL	BMC	LEH	AMB						JEG	BMC	DFTC	LEH	
2	UPDATED WITH VALUE ENGINEERING OPTIONS	25 SEPT 2015	J. GLAWDEL	BMC	BHM	JEG						JEG	BMC	DFTC	AMB	
1	UPDATED WITH COMMENTS	11 AUG 2015	J. GLAWDEL	BMC	BHM	JEG						JEG	BMC	RSP		
0	ISSUED FOR REVIEW	06 JUL 2015	J. GLAWDEL	BMC	LEH	JEG						JEG	BMC			
APPR	B. CHELBECHA															

REF #	DRAWING NUMBER	TITLE	REF #	DRAWING NUMBER	TITLE

NOT TO BE REPRODUCED WITHOUT THE PERMISSION OF BGC HYDRO



Reviewed / Examiné

Page 6 of 10

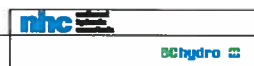
2017-500078
MAY 08 2017

By/par: _____

COLIN PARKINSON
Navigation Protection Program /
Programme de protection de la navigation

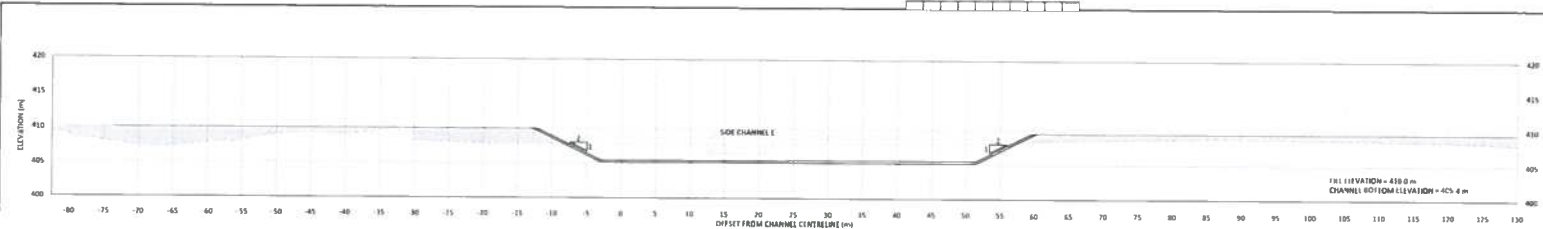
LEGEND:

	EXISTING GROUND		MAX. OPERATIONAL WATER LEVEL (E ₂ = 2000 m ³ /s)
	PROPOSED GROUND		MIN. OPERATIONAL WATER LEVEL (E ₁ = 190 m ³ /s)

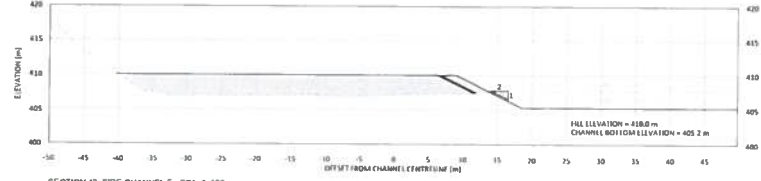


5	ISSUED FOR CONSTRUCTION W/ REVISIONS	03 NOV 2016	A. BLEZY	BMC	KEH	AMB						AMB	BAC	DSON	JEG
4	ISSUED FOR CONSTRUCTION	29 FEB 2016	A. BLEZY	BMC	KEH	AMB						AMB	BAC	DSON	BMC
3	ISSUED FOR REVIEW	04 DEC 2015	J. GLAWDEL	BMC	KEH	AMB						JEG	BMC	DSON	KEH
2	UPDATED WITH VALUE ENGINEERING OPTIONS	15 SEPT 2015	J. GLAWDEL	BMC	BSH	JEG						JEG	BMC	DSON	AMB
1	UPDATED WITH COMMENTS	11 AUG 2015	J. GLAWDEL	BMC	BSH	JEG						JEG	BMC	DSON	JEG
0	ISSUED FOR REVIEW	06 JUL 2015	J. GLAWDEL	BMC	KEH	JEG						JEG	BMC	DSON	JEG

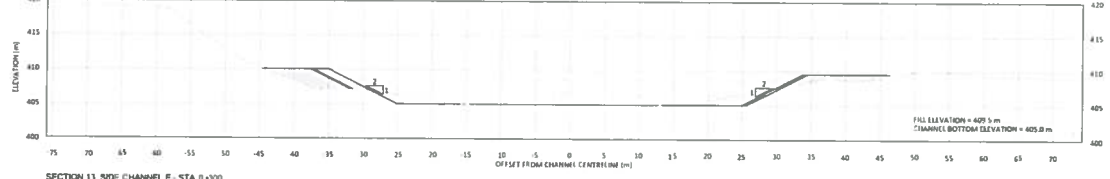
PRELIMINARY NOT FOR CONSTRUCTION		DATE	03 NOV 2016	DIST	
SITING		DATE	03 NOV 2016	DIST	
PROJECT NO.		1016-L13-459	SCALE	A0	5



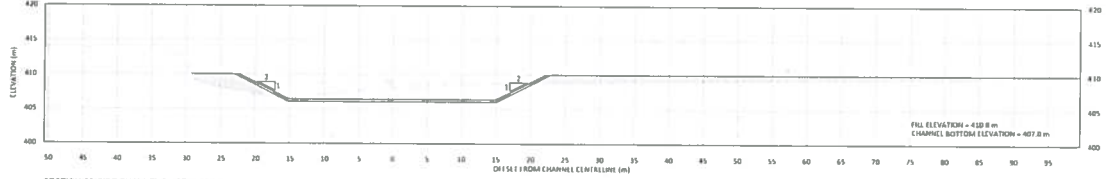
SECTION 11 SIDE CHANNEL B, C & D - STA. B+700
SCALE 1:200



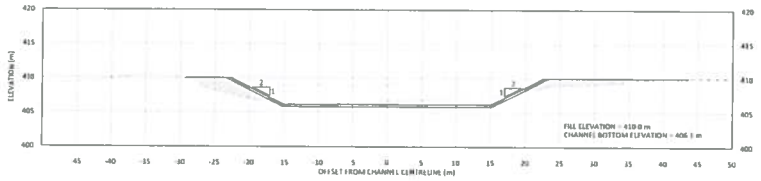
SECTION 12 SIDE CHANNEL E - STA. B+500
SCALE 1:200



SECTION 13 SIDE CHANNEL E - STA. B+300
SCALE 1:200



SECTION 14 SIDE CHANNEL D - STA. 1+500
SCALE 1:200



SECTION 15 SIDE CHANNEL D - STA. 1+300
SCALE 1:200

Reviewed / Examiné

Page 7 of 8
2017-500078
MAY 08 2017

By/par: *[Signature]*
COLIN PARKINSON
 Navigation Protection Program /
 Programme de protection de la navigation

LEGEND:

EXISTING GROUND
 PROPOSED GROUND

MAX. OPERATIONAL WATER LEVEL (Q = 2000 m³/s)
 MIN. OPERATIONAL WATER LEVEL (Q = 150 m³/s)

NO	REVISIONS	DATE	DESIGNED	CHK'D	APP'D	BY	CHK'D	APP'D	BY	CHK'D	APP'D	BY	CHK'D	APP'D	BY	CHK'D	APP'D	BY	
5	ISSUED FOR CONSTRUCTION W/ REVISIONS	03 NOV 2016	A. BLEZY	BMC	JEH	AMB													
4	ISSUE FOR CONSTRUCTION	29 FEB 2016	A. BLEZY	BMC	JEH	AMB													
3	ISSUED FOR REVIEW	04 DEC 2015	J. GLAWDEL	BMC	JEH	AMB													
2	UPDATED WITH VALUE ENGINEERING OPTIONS	25 SEPT 2015	J. GLAWDEL	BMC	JEH	AMB													
1	UPDATED WITH COMMENTS	11 AUG 2015	J. GLAWDEL	BMC	JEH	AMB													
0	ISSUED FOR REVIEW	06 JUN 2015	J. GLAWDEL	BMC	JEH	AMB													

nbc Navigational Protection

BC Hydro

PRELIMINARY
NOT FOR CONSTRUCTION

SITE C CLEAN ENERGY PROJECT
 GENERAL PLANT
 FISH HABITAT MITIGATION
 DOWNSTREAM - SITE 109L
 DETAILED DESIGN
 SECTIONS 11 THROUGH 15


DATE: 03 NOV 2016
 SHEET NO: 1016-L13-460
 SCALE: AO
 NO. 5

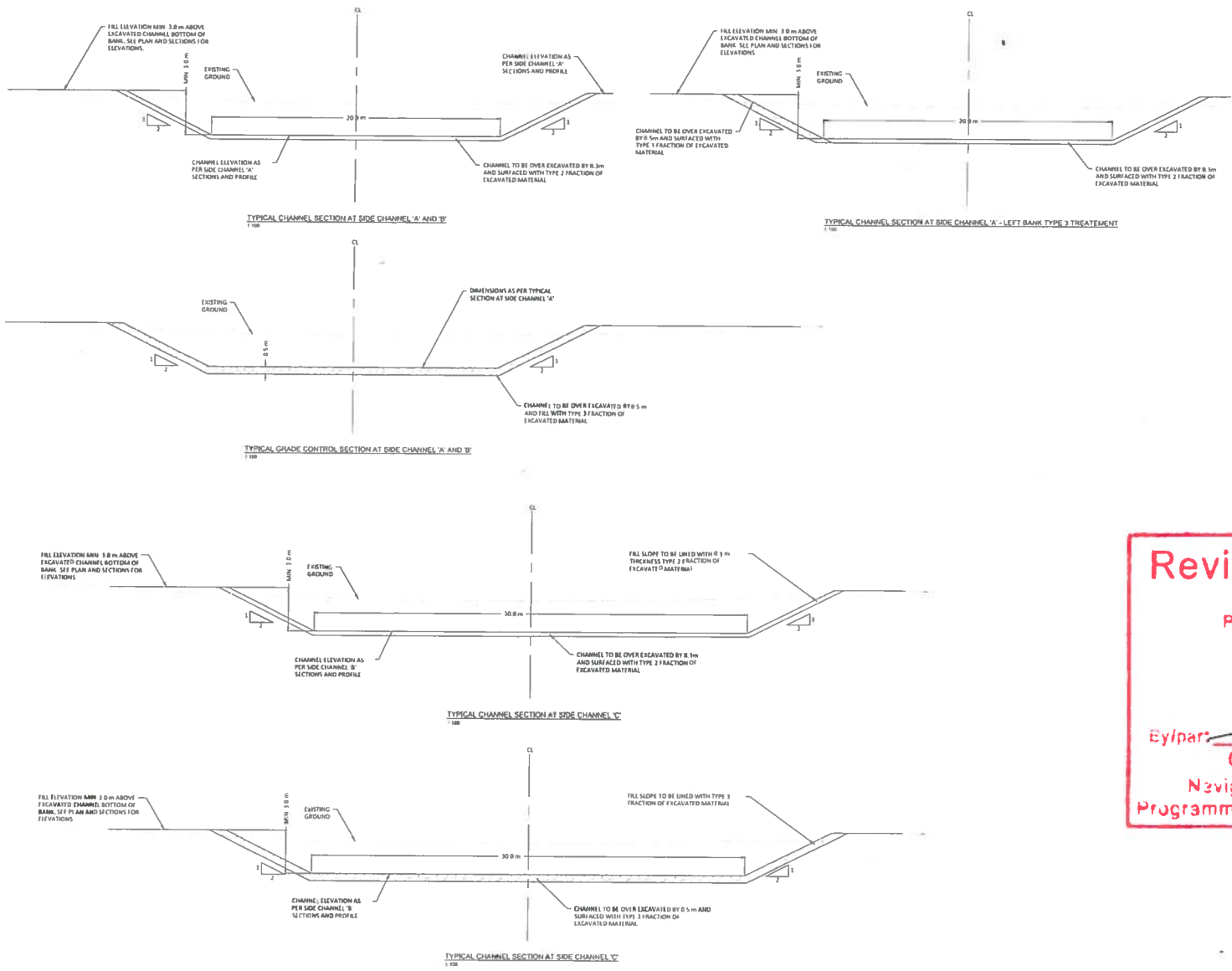
NOT TO BE REPRODUCED WITHOUT THE PERMISSION OF BC HYDRO

\Users\C\Users\jglawdel\OneDrive\Documents\Sites\SITE C\Plan\11-15-109L-460-487.dwg
 17/11/2016 11:02:31 AM

Reviewed / Examiné

Page 7 of 7
 2017-50074
 MAY 08 2017

By/par 
COLIN PARKINSON
 Navigation Protection Program /
 Programme de protection de la navigation



LEGEND:

 TYPE 2 MATERIAL

 TYPE 3 MATERIAL



NO	REVISIONS	DATE	DESIGNED	DRAWN	CHECKED	INSP	STR	MECH	ELEC	REV	ACPI	REV
5	ISSUED FOR CONSTRUCTION (w) REVISIONS	03 NOV 2016	A. BLEZY	BMC	LEH	AMB				AMB	BMC	DSGH
4	ISSUED FOR CONSTRUCTION	29 FEB 2016	A. BLEZY	BMC	LEH	AMB				AMB	BMC	DSGH
3	ISSUED FOR REVIEW	04 DEC 2015	J. ELAWDEL	BMC	LEH	AMB				JAG	BMC	OPTC
2	UPDATED WITH VALUE ENGINEERING OPTIONS	25 SEPT 2015	J. ELAWDEL	BMC	LEH	AMB				JAG	BMC	OPTC
1	UPDATED WITH COMMENTS	11 AUG 2015	J. ELAWDEL	BMC	LEH	JAG				JAG	BMC	RSP
0	ISSUED FOR REVIEW	06 JUN 2015	J. ELAWDEL	BMC	LEH	JAG				JAG	BMC	RSP

PRELIMINARY
NOT FOR
CONSTRUCTION

SITE C CLEAN ENERGY PROJECT
GENERAL PLANT
FISH HABITAT MITIGATION
DOWNSTREAM - SITE 109L
DETAILED DESIGN
TYPICAL SECTIONS

DATE: 03 NOV 2016
 DRAWN NO: 1016-L13-452
 SHEET NO: AO 5

W:\Projects\2016\Site C Clean Energy\Drawings\109L\109L-1016-L13-452.dwg
 10/3/2016 10:10:10 AM
 487 (254)