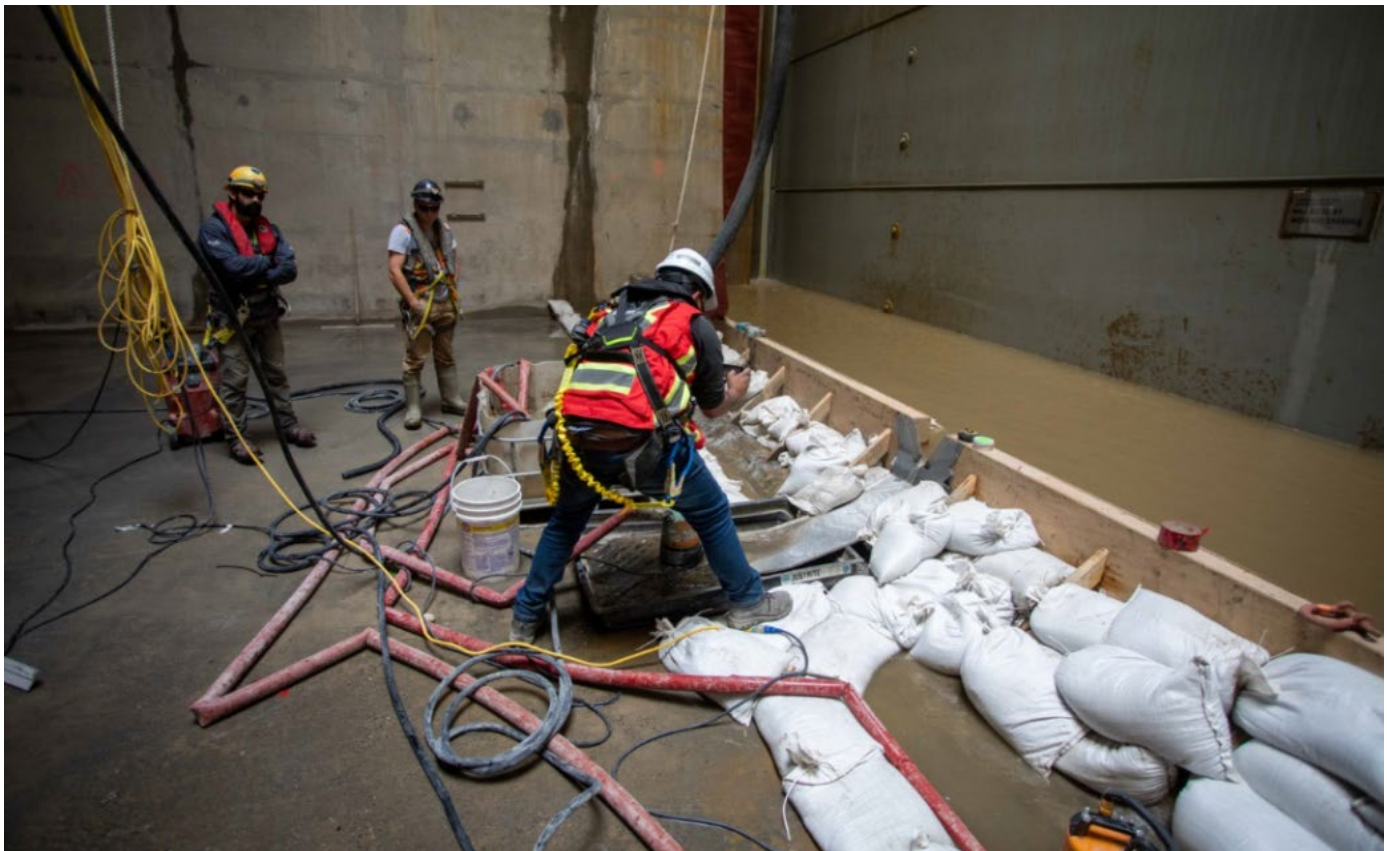


## Site C Construction Schedule: September 19 – October 2, 2020



Workers test the gates to the diversion tunnels. See more project photos in the [image gallery](#).

### News and highlights

- [River diversion](#) is on schedule for this fall, with the inlet and outlet cofferdams opened up, and tunnel gate testing successfully completed.
- The [latest employment statistics](#) show there were 4,645 total workers on the Site C project in July.
- Highway construction at Cache Creek East and Dry Creek may begin. Crews and material will begin moving to site.
- Read the new information sheet on the [downstream effects](#) of Site C.
- The mouth of the Halfway River is now [closed to boaters](#) until April 30, 2021. As part of reservoir clearing activities, BC Hydro will be building six temporary crossings over the Halfway River. Boaters will still be able to access the Peace River from the Halfway River boat launch.

## River diversion and navigational changes

- **New:** The inlet and outlet cofferdams have been opened, and final removal is underway. Tunnel gate testing was successfully completed.
- Water is being run through the temporary fish passage, as part of the commissioning process.
- Upstream and downstream cofferdam construction is continuing as part of river closure. This includes placing earthfill material into the river and installing interlocking steel piles.
- Construction of the remaining debris management structures on the Peace River continues.
- For safety reasons, a four-kilometre section of the Peace River near Fort St. John has been [permanently closed to boaters](#). This closure is related to in-river works associated with [river diversion](#) and dam construction.
- Boaters should be aware of submerged underwater cable hazards upstream of the debris boom, which are used for the debris clearing barge
- A section of the Halfway River is now [closed to boaters](#) until April 30, 2021. As part of reservoir clearing activities, BC Hydro will be building six temporary crossings over the Halfway River.
- Regular updates on river diversion are now available on the [Site C website](#).

## COVID-19 update

- BC Hydro confirms [positive COVID-19 case](#) for Site C employee.
- BC Hydro continues to work with Northern Health and provincial health officials to [monitor for COVID-19](#) and protect our workforce and partner communities.

## Regulatory notices

- BC Hydro has [submitted an application](#) to Transport Canada (Registry #2152) under the *Canadian Navigable Waters Act*, to build a causeway road along a side channel of the Halfway River, five kilometres upstream of where it meets the Peace River. The causeway is required to facilitate clearing in the lower Halfway River for the Site C reservoir. The public can provide comments through Transport Canada's [Common Project Search](#) or by emailing [NPPAC-PPNPAC@tc.gc.ca](mailto:NPPAC-PPNPAC@tc.gc.ca).

## Dam site area – north bank and south bank

- Penstock deliveries will occur on September 21 and 24, resulting in night-time traffic delays on Old Fort Road. Check our website for the latest [delivery schedule](#).
- A number of work fronts are active including earthworks, drilling and grouting, and roller compacted concrete placement. All work fronts are being monitored and maintained to meet environmental and regulatory commitments.
- Powerhouse construction is continuing. This includes concrete placements at the powerhouse and spillway, and construction of the super-structure for the powerhouse.
- Two powerhouse bridge cranes are now in service to support construction of the turbines and generators.
- Substation work is continuing. This includes testing and commissioning to prepare for energization in the fall.
- The turbine generator contractor continues to deliver components and materials to site for storage inside the warehouse and outside in laydown areas 24 and 27. The contractor has resumed operations at their on-site shop, has mobilized to the main service bay and will commence layout for their main office complex in Area 32A in mid-September. Unit 1 turbine installation begins in the fall.
- Work is continuing to [reinforce the piers](#) of the Peace River construction bridge.
- The conveyor belt is being used occasionally, as needed.

## Highway 29

### *Cache Creek East*

- **New:** The contractor will mobilize and begin construction on the Cache Creek East segment.

### *Halfway River*

- Construction of a 1,042-metre-long bridge at [Halfway River](#) continues. This includes operation of a concrete batch plant, aggregate plant, aggregate pit development, construction of bridge abutments, installation of bridge pier rebar, formwork and concrete, delivery of bridge steel girders, and hauling and stockpiling of materials.
- In-river construction of a berm will occur.
- Surveying and vegetation removal will occur in the Halfway River area, for a new distribution line.

### *Dry Creek*

- **New:** The contractor will mobilize and begin construction on the new highway and bridge at Dry Creek.

### *Lynx Creek*

- Riprap materials will be hauled from Portage Mountain quarry and stockpiled near Lynx Creek.
- [Visit our website](#) for more Highway 29 schedules, maps and construction updates.

## Reservoir area clearing

- Field surveys and investigations may occur along the reservoir in preparation for construction works this fall.
- Clearing activities including access construction and deconstruction are occurring on the north and south banks of the Peace River from Cache Creek to the Halfway River as well as up the Halfway River drainage.
- Processing of waste wood that is being left on site to meet engineering specifications may occur in areas of the eastern and middle reservoirs. Vehicles, boats and/or helicopters may be used by workers to access work sites. Road maintenance activities may occur, as needed.
- Hauling of logs to local mills may occur subject to suitable access road conditions.

## Transmission works

- Work on the transmission line will continue. This involves installing line spacers and marker spheres on the transmission line conductor, and installing jumpers on transmission towers.
- Tower assembly and installation of micropiles is taking place.
- Site access and reclamation works will continue.

## Other areas

- **New:** Building demolitions will take place in the Lynx Creek area.
- Construction continues on improvements to the Charlie Lake sewer outfall.
- Installation of 25 eagle nest platforms continues in various areas around the Peace River.
- Blasting at Portage Mountain Quarry has finished for the year. Riprap production will continue on previously blasted, unprocessed material, until early November. Materials will continue to be hauled to various segments of Highway 29, with blasting resuming in May 2021.

# CONSTRUCTION BULLETIN

## WHAT TO EXPECT

Work will take place during the day, night, and on the weekend, until the project is completed. During this time, residents can expect:

### Boating

- The Peace River near the dam site has been permanently closed to vessel traffic. A patrol boat will monitor the area, which is also marked with beacons and signage.
- The lower reaches of the Halfway River are closed to boat traffic until April 30, 2020.
- Boaters are advised to watch for logs and debris flowing down the Peace River.
- Boaters should use caution in the Peace River, especially near the debris booms and active construction sites along Highway 29.

### Traffic – please use caution and obey safety signage

- **Old Fort Road**
  - Near Gate A to the dam site, drivers may encounter loose gravel and increased commercial traffic.
  - Due to equipment delivery, there may be [occasional short road closures](#) along Old Fort Road.
- **Highway 29:** Construction-related equipment will travel along Highway 29 and Highway 97. Learn more at [drivebc.ca](#).
- **Other areas:** Trucks with heavy loads will be accessing the dam site and other project areas, using public and resource roads.

### Equipment

- Heavy machinery will be in the transmission line corridor. Please stay clear of the work areas.
- Helicopters and commercial drones may be used to support investigative and construction works.

### Noise and vibration

- Some noise and vibration may occur near the dam site and work areas, including the quarries.

[Sign up for construction bulletins](#) and follow us [@sitecproject](#) on Twitter to receive updates.