



Site Preparation North Bank Site Visit

- BC Hydro is holding these site visits/tours at this time to allow as many potential participants in a future competitive procurement process to see the site prior to winter conditions setting in.
- All information provided to attendees at these site visits/tours will be given to all participants in a future competitive procurement process.

Introductions Don Wharf

Confidentiality Agreement Kate O'Neil

Procurement Alison Hall

North Bank Project Overview Don Wharf

Visitor Safety Orientation Kate O'Neil

Site Visit – North Bank Don Wharf

Confidentiality Agreement

- Confidentiality
 - All parties have reviewed the confidentiality provisions of the site visit protocol
 - All parties will treat as confidential any information disclosed on the site visit
- Media and public inquiries
 - All media and public inquiries referred to the project spokesperson, Dave Conway, Community Relations Manager, Site C

Procurement

- BC Hydro anticipates initiating a competitive procurement process for construction of an Site Preparation package later this year.
- Any questions resulting from this meeting and site visit should be held until then.
- Information obtained during this meeting and site visit may not be used or relied on under any circumstance.

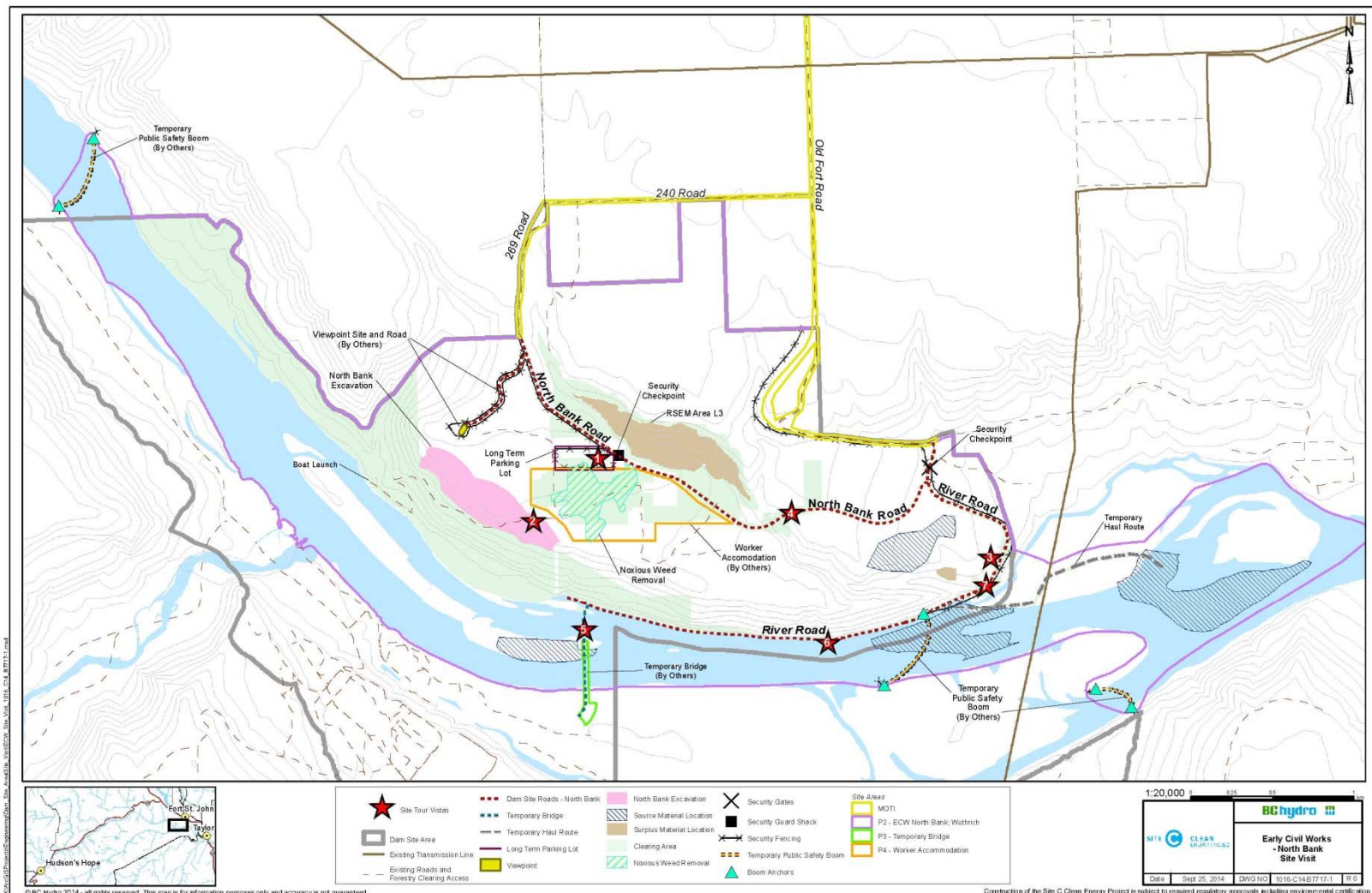
Attendance at this meeting and site visit is entirely voluntary and will not be a pre-requisite of a subsequent competitive procurement process.

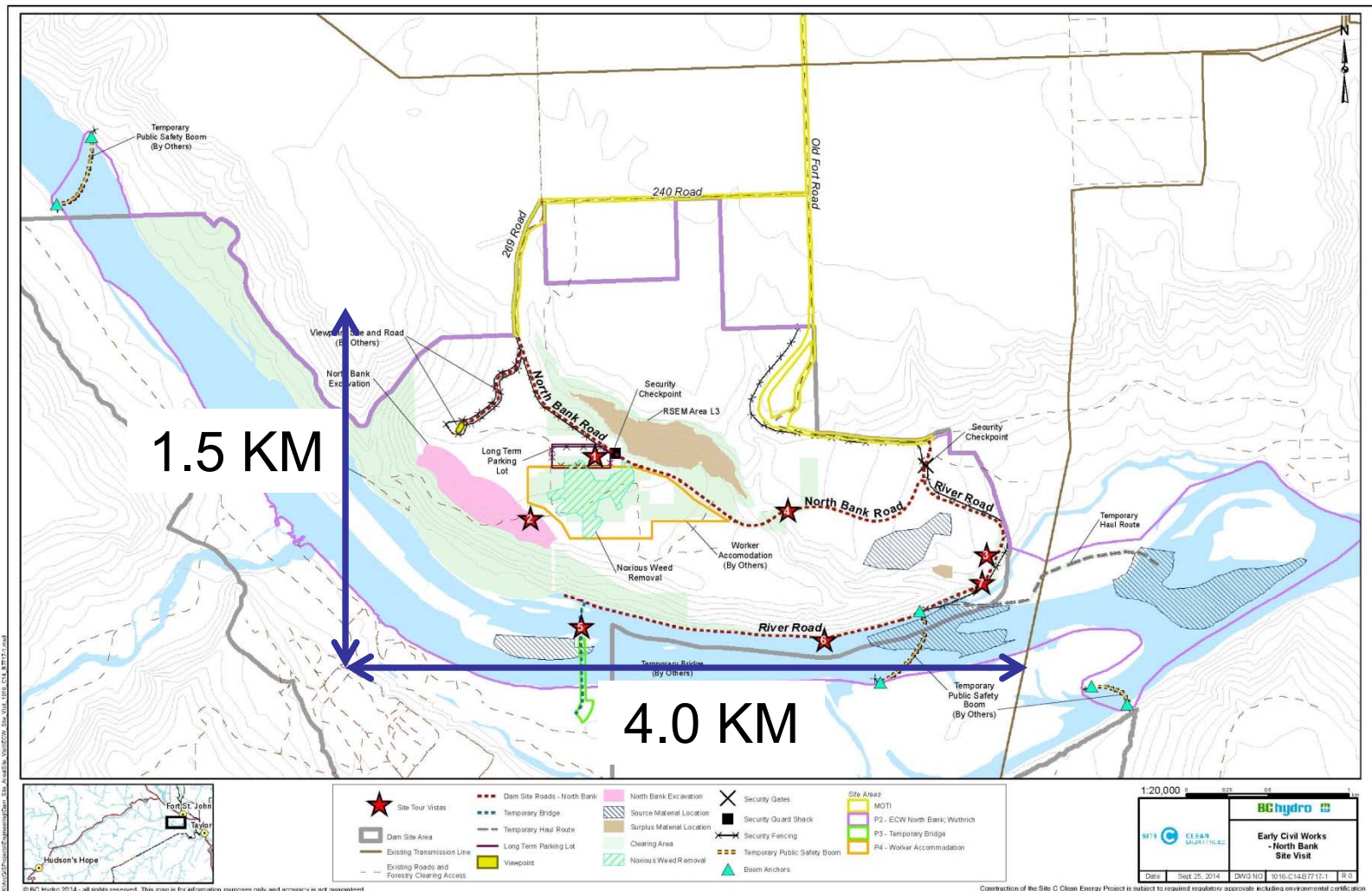
The procurement approach for Site C includes a combination of smaller and larger packages, with some directed procurements to Aboriginal groups. BC Hydro is continuing to plan for the procurement of Site C site preparation and how additional components will be procured.

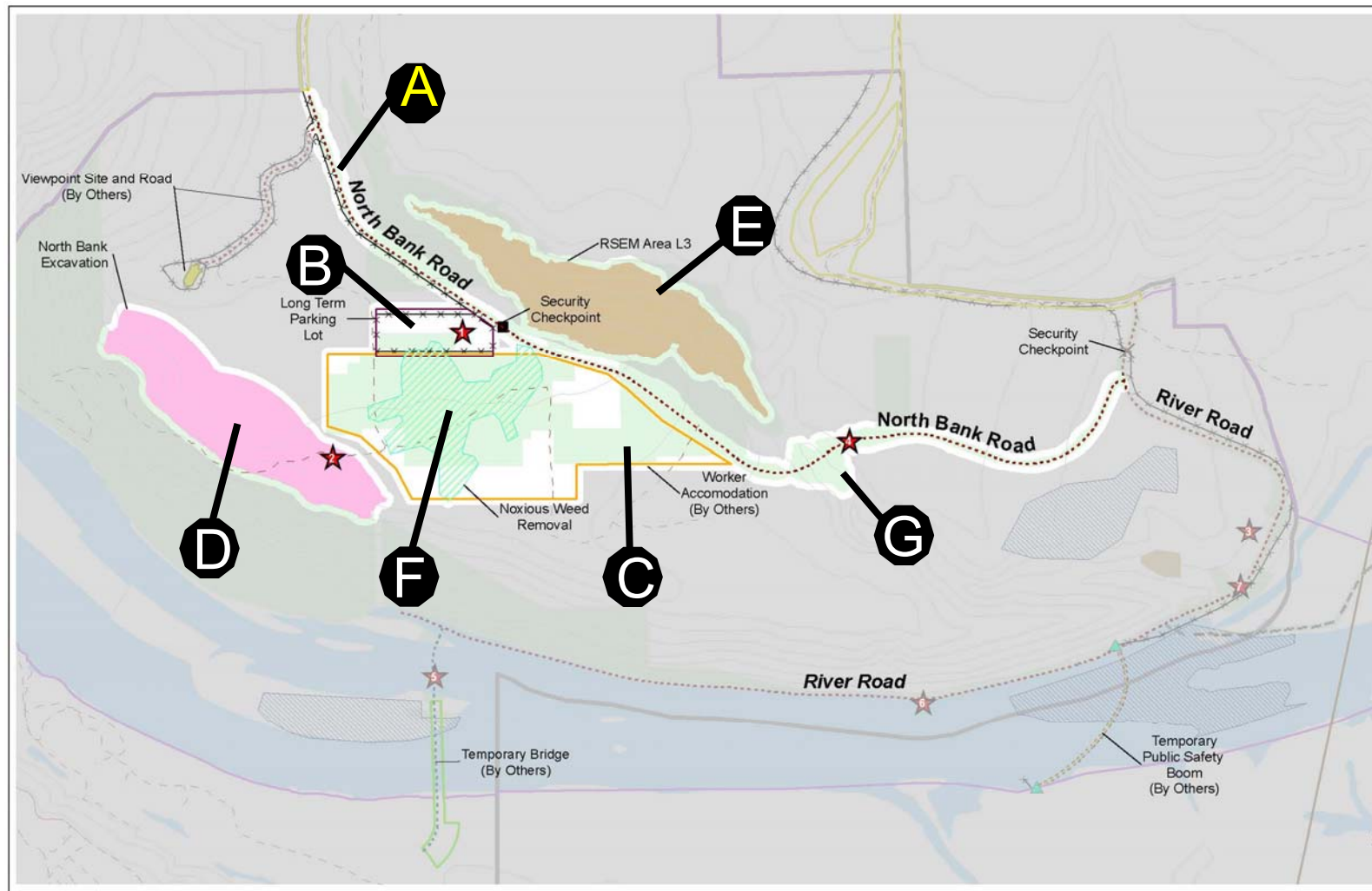
Site Preparation

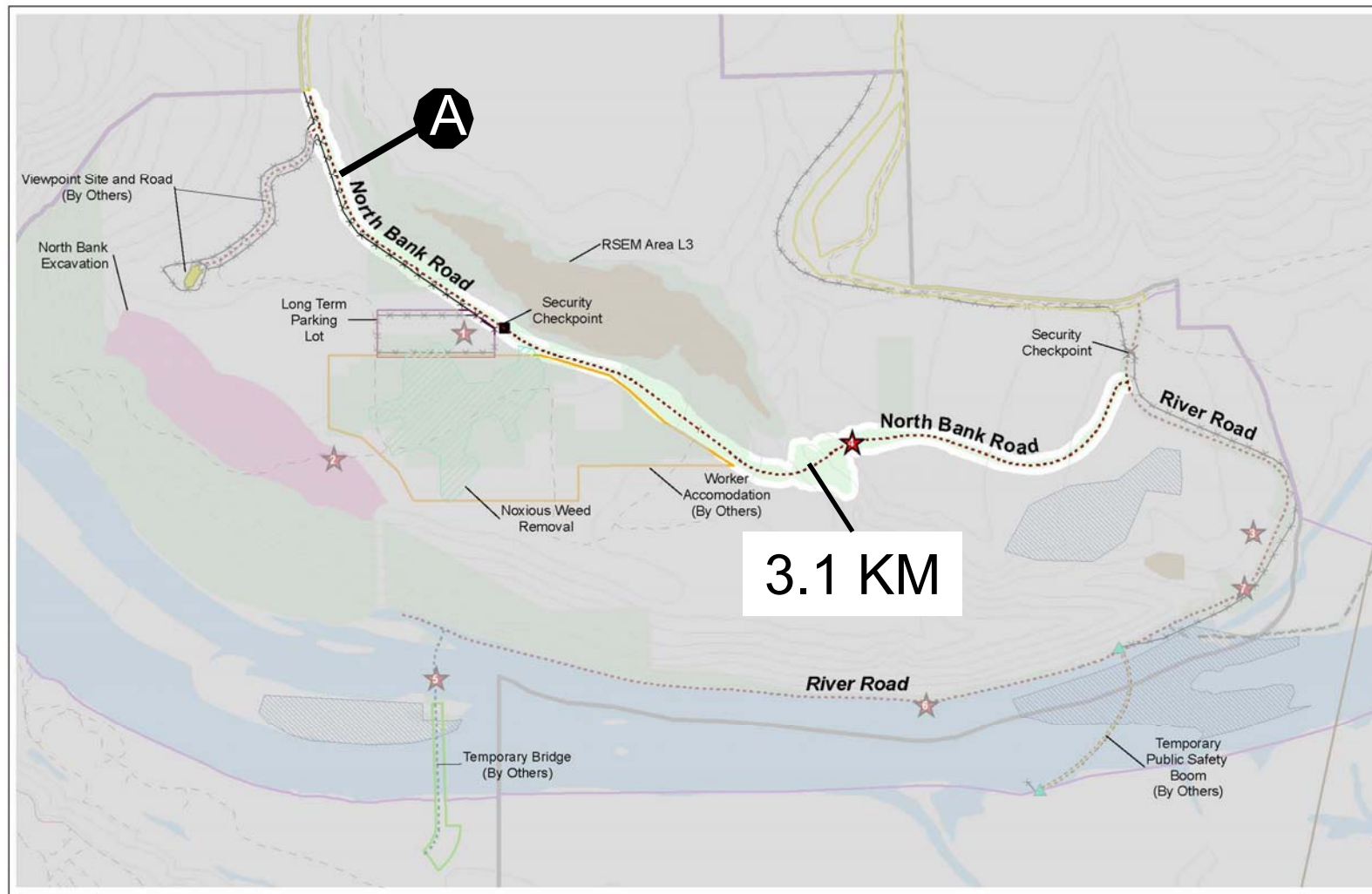
North Bank

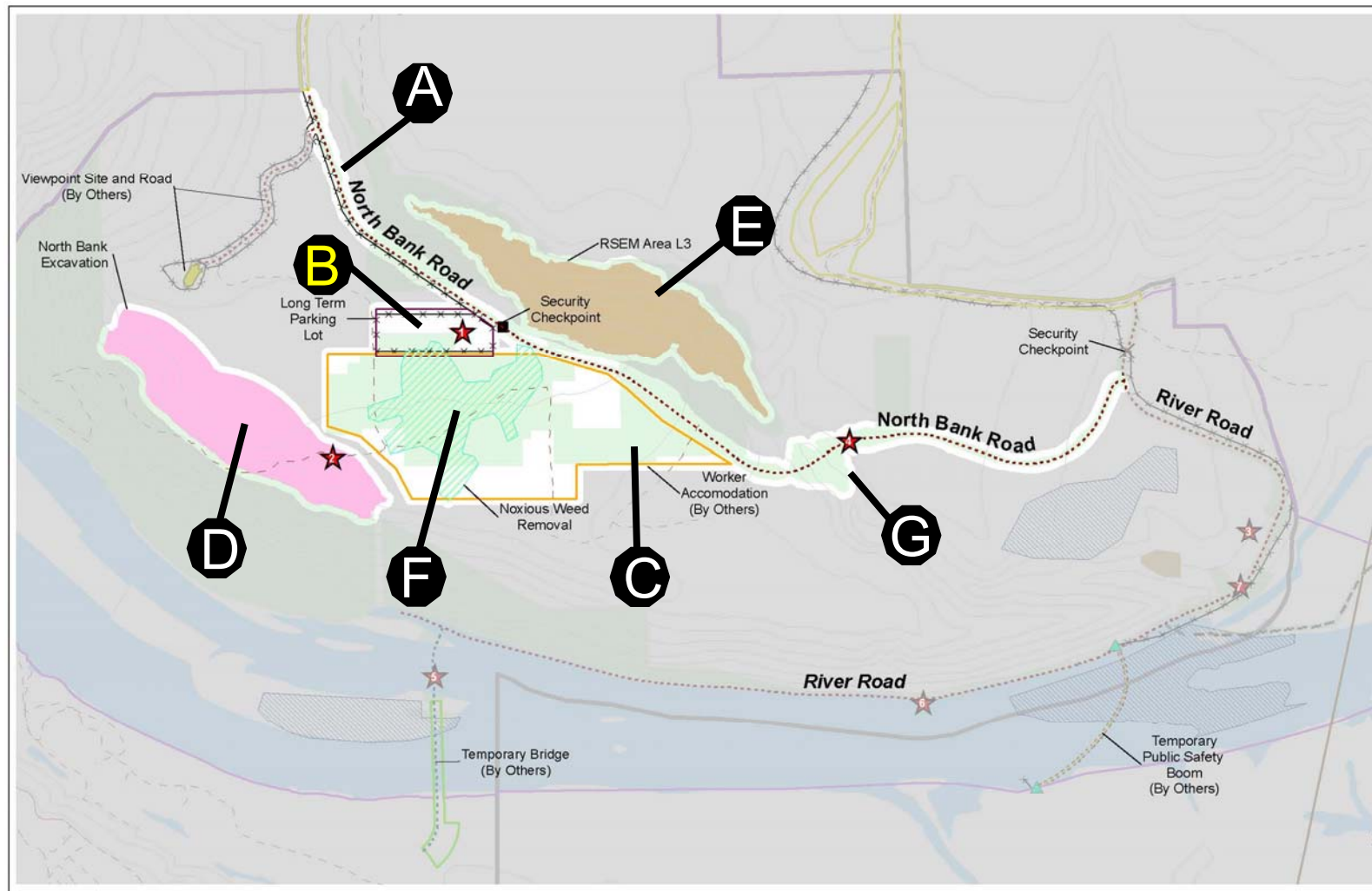
Project Overview

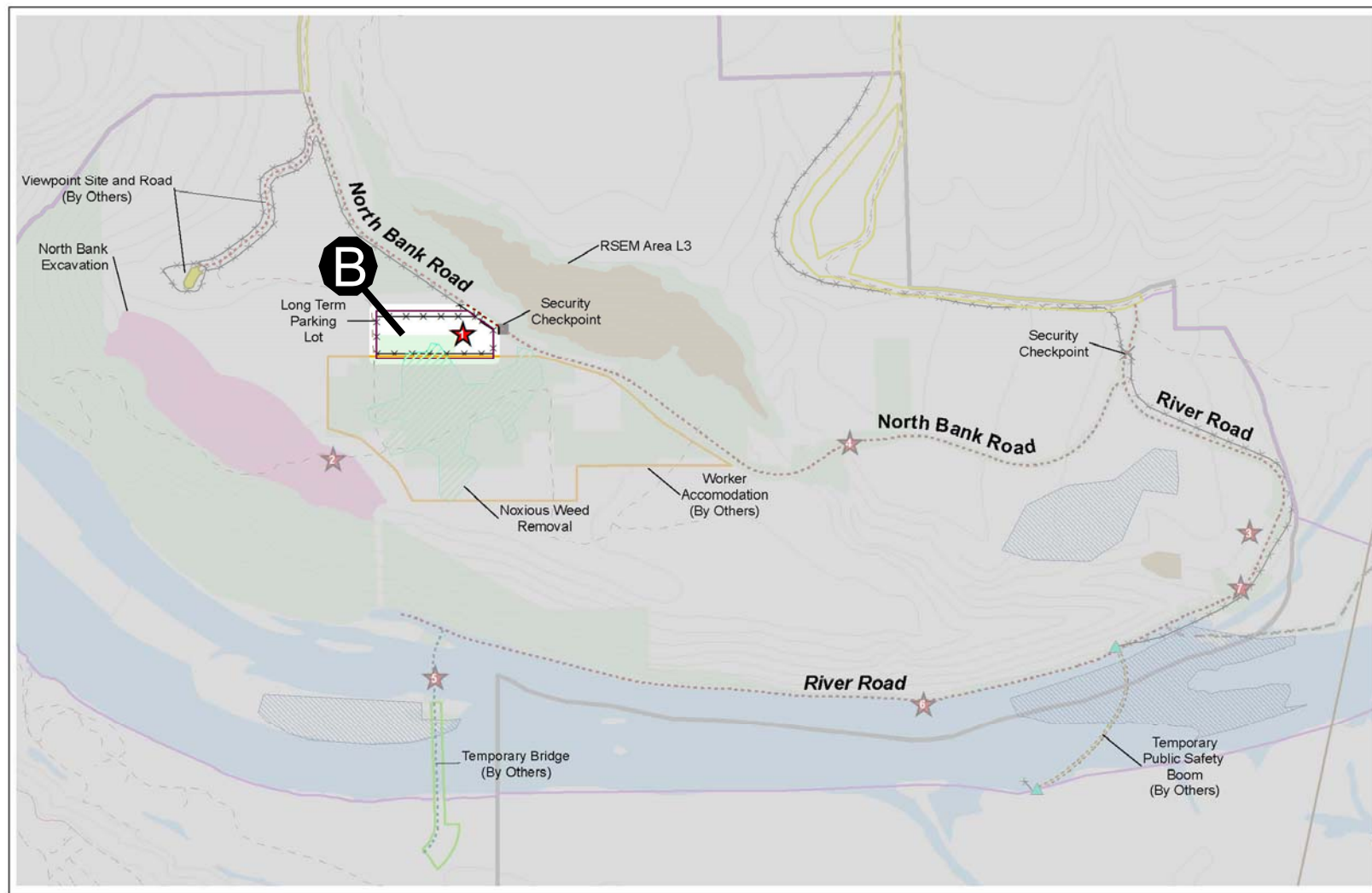




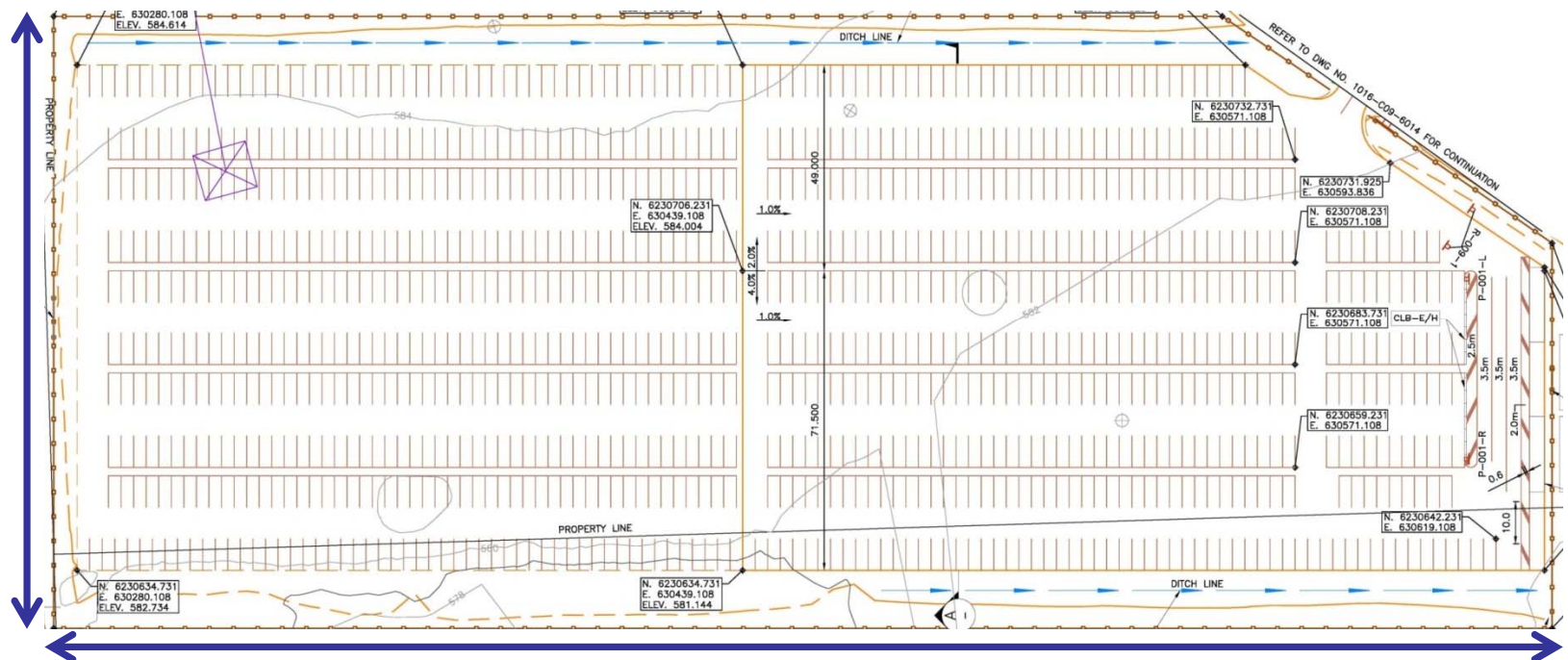






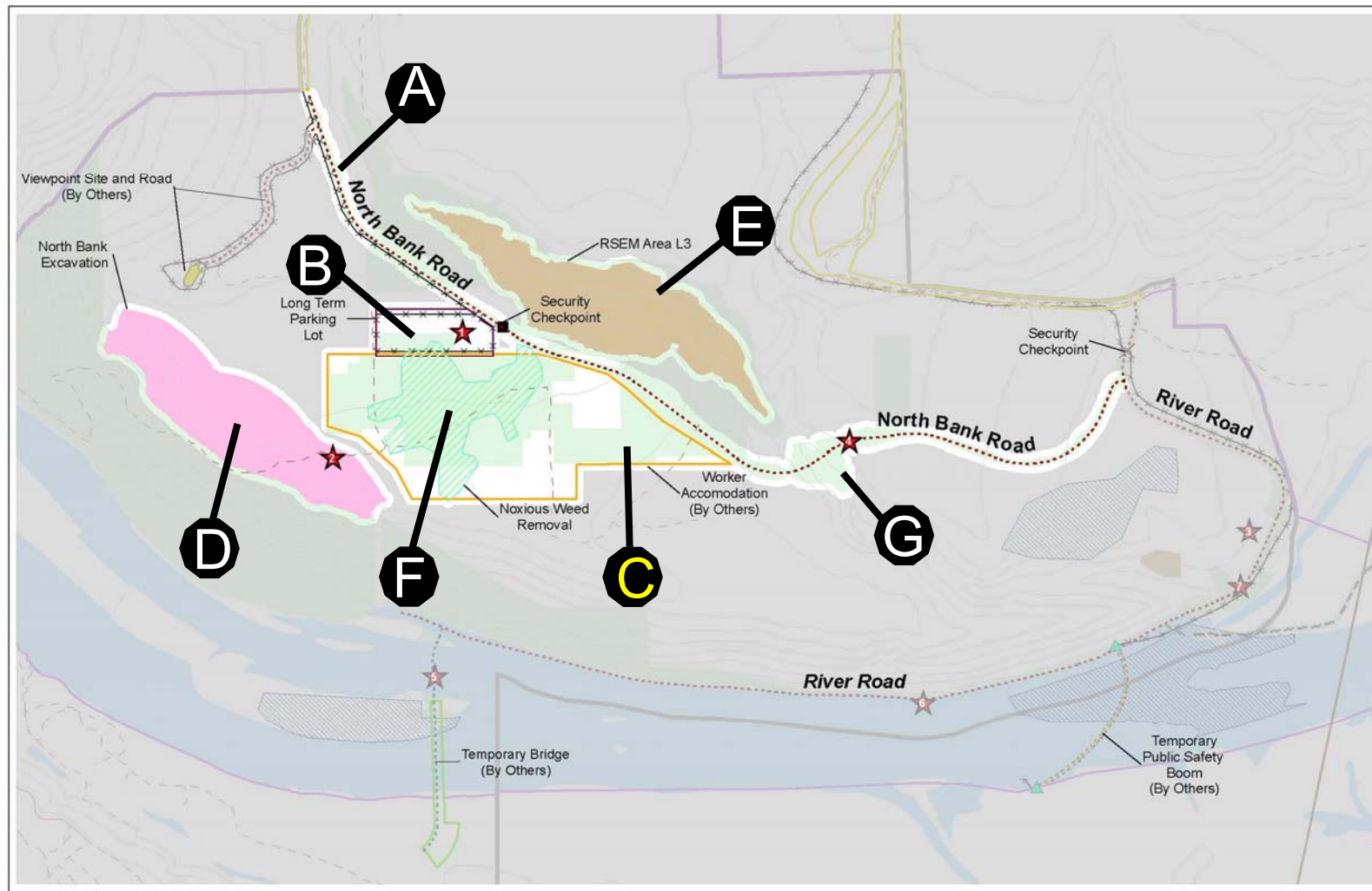


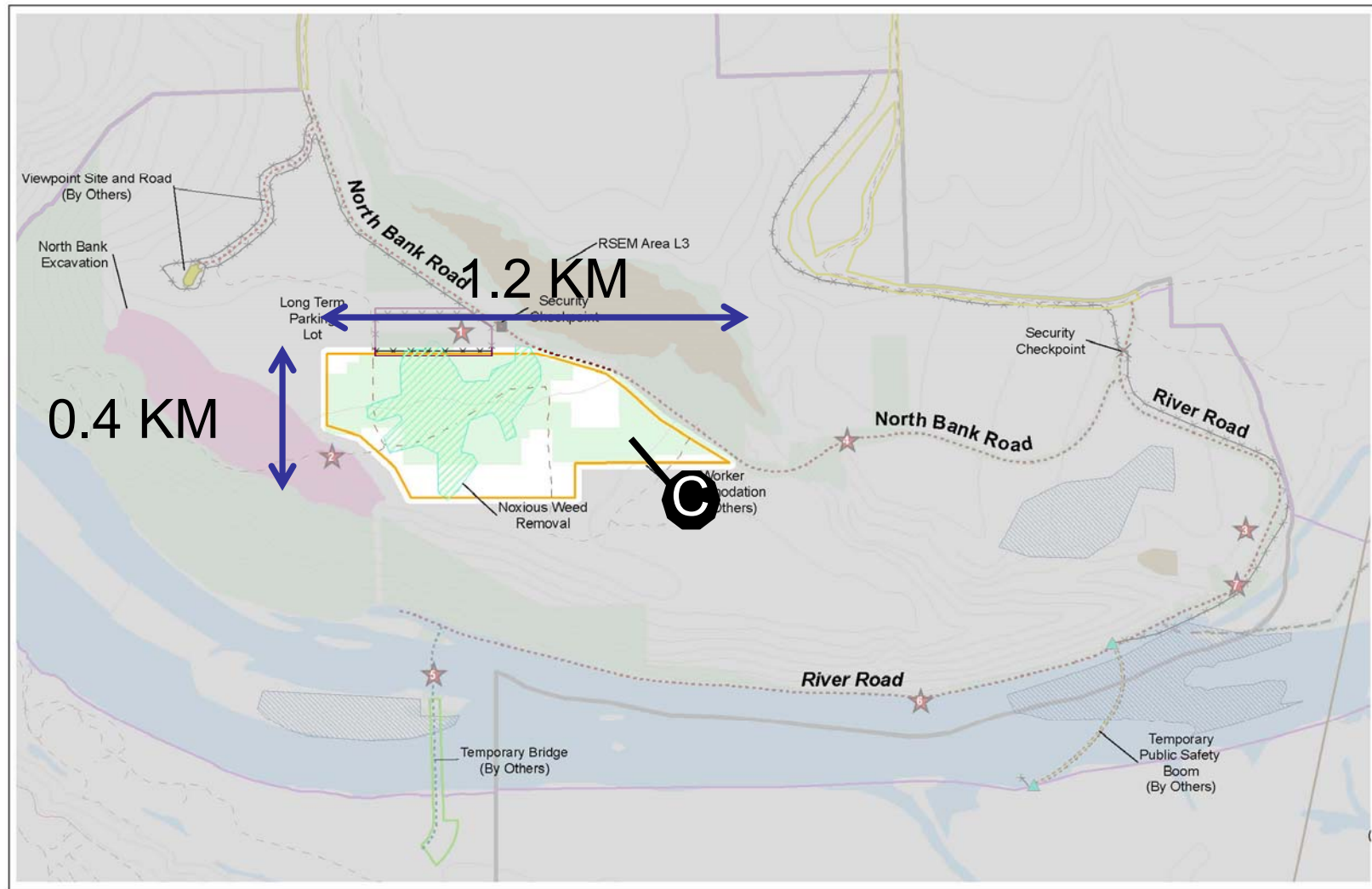
145
Meters

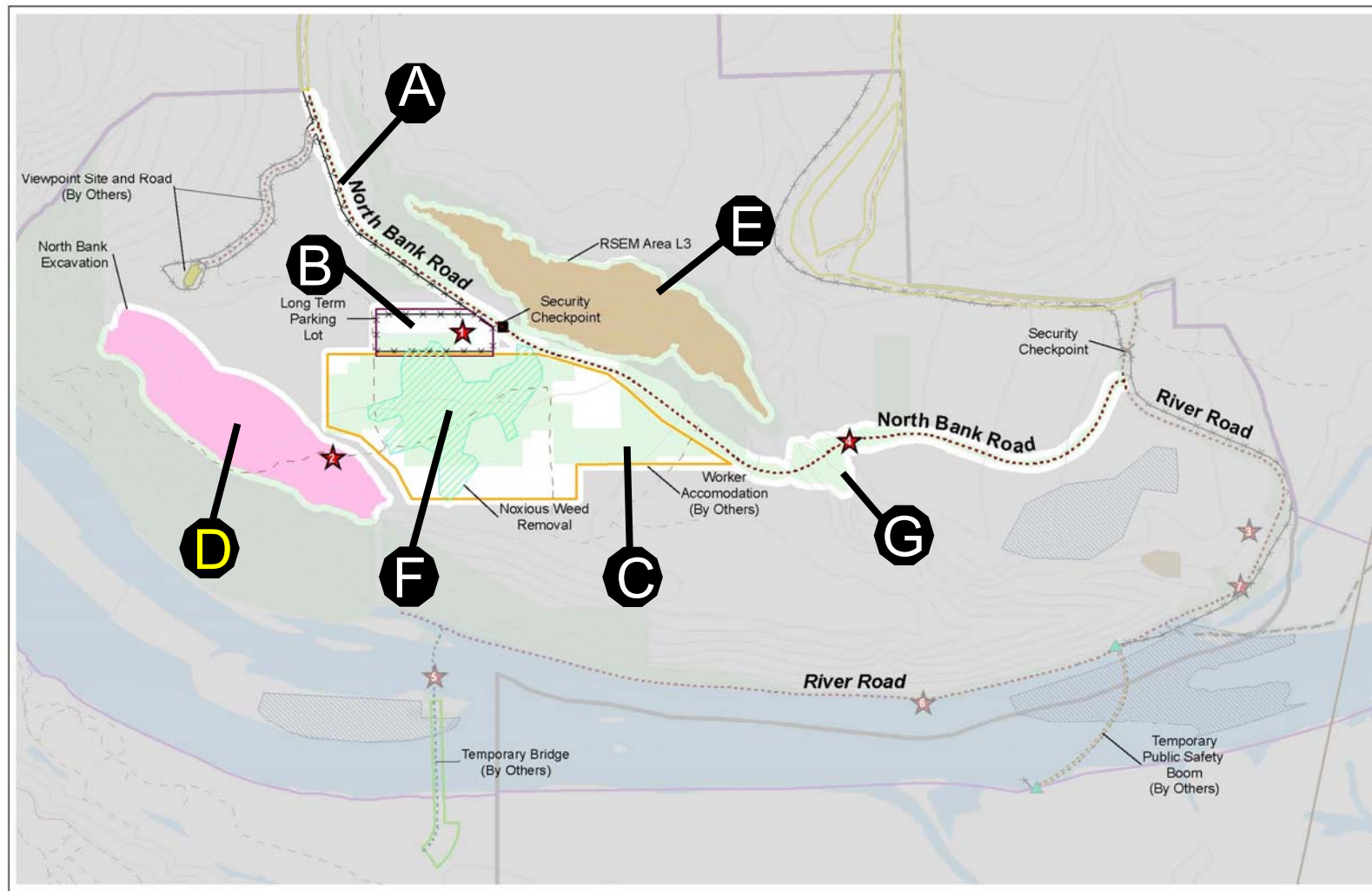


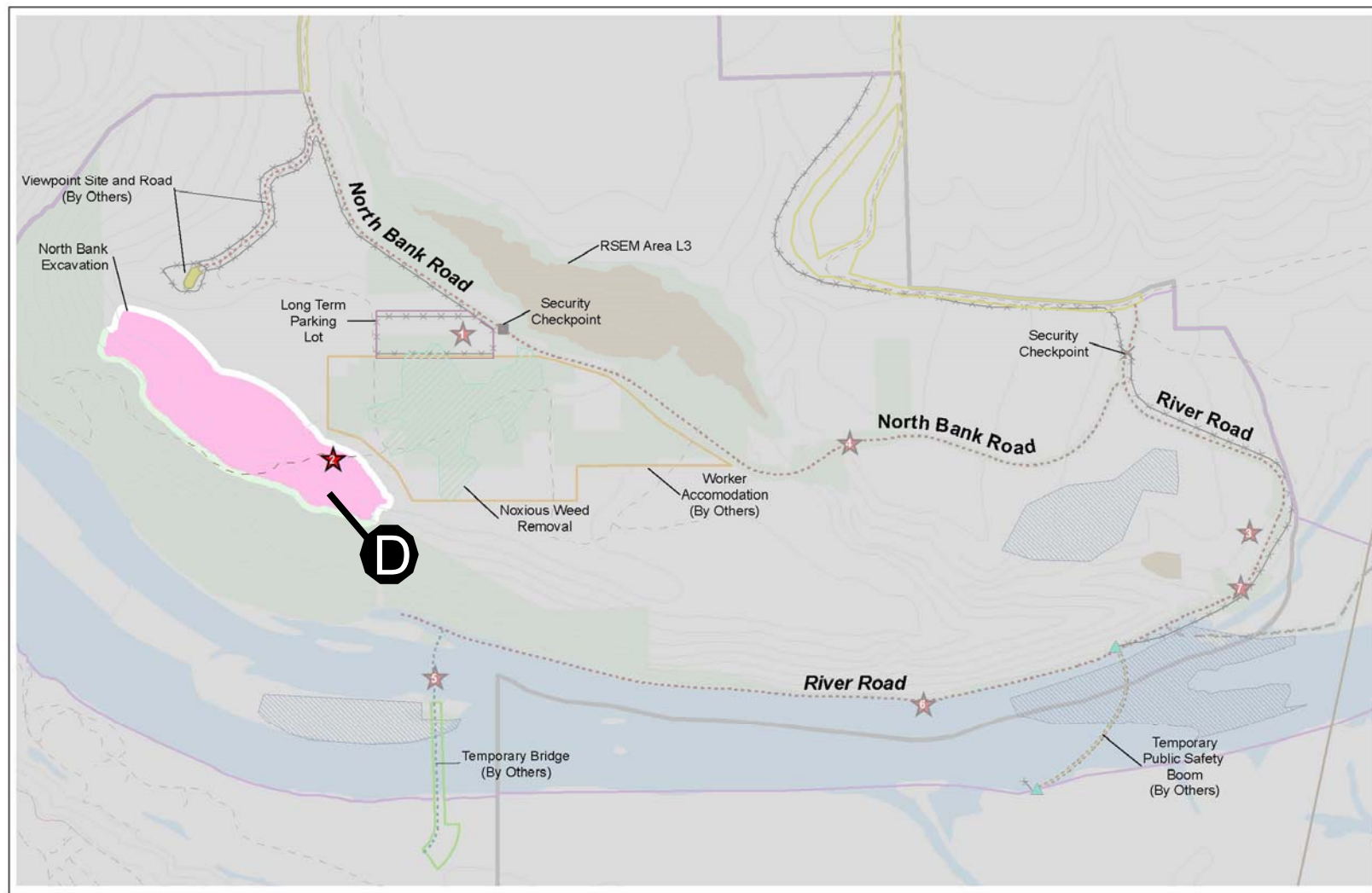
305 Meters

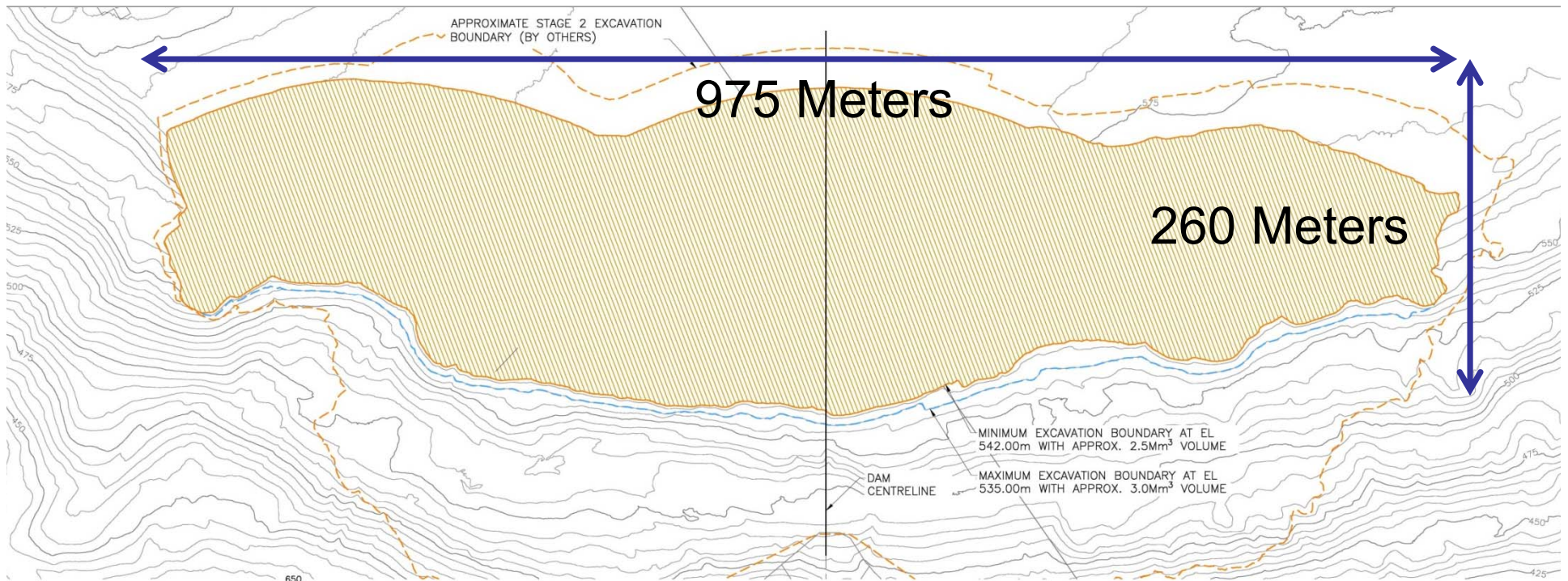
North Bank Road and Features



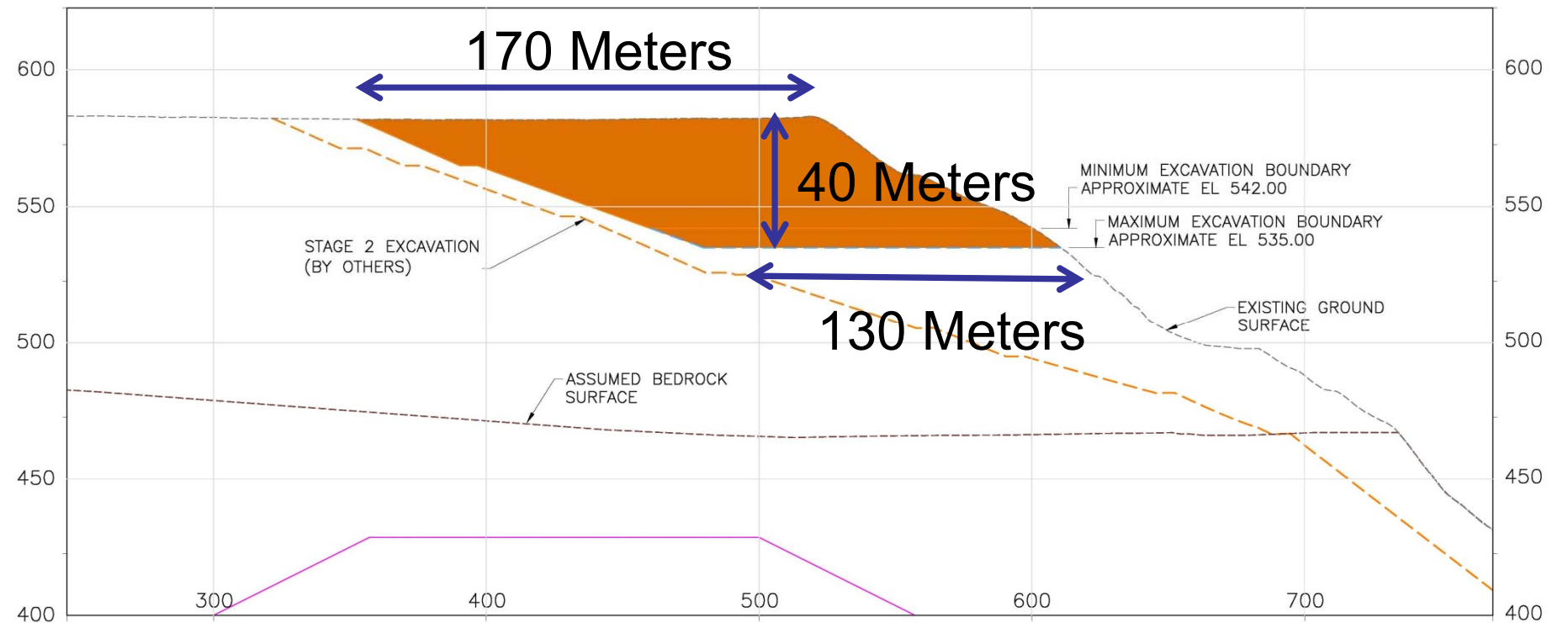




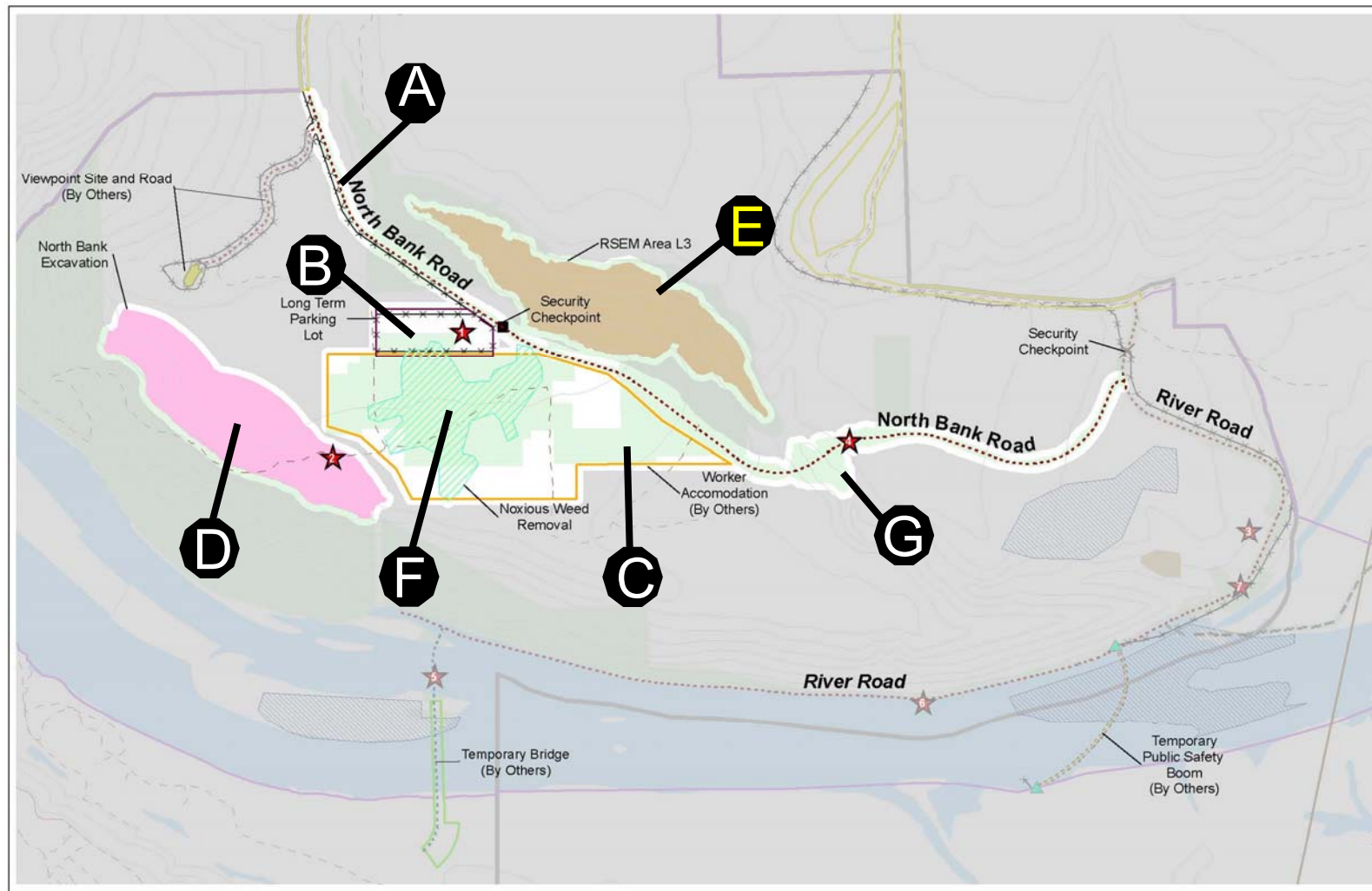


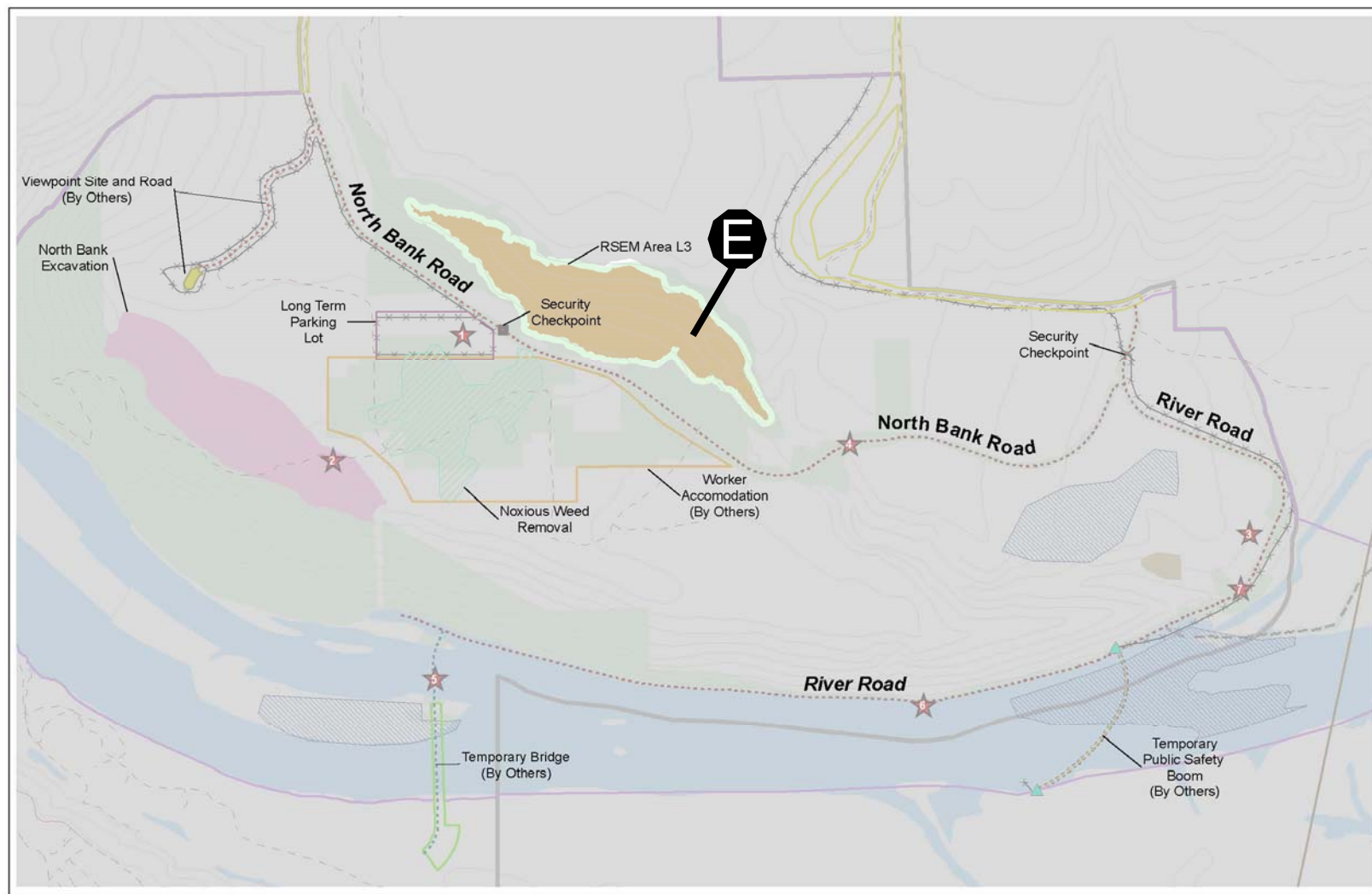


D North Bank Excavation Cross-section



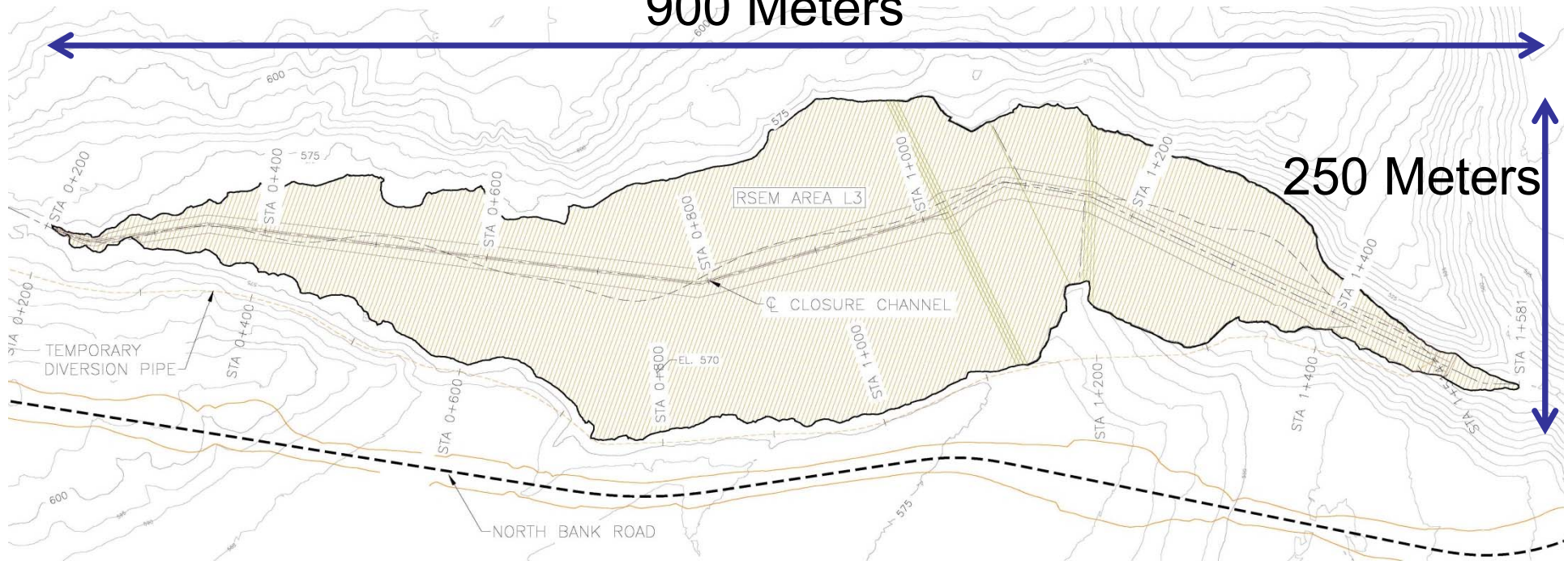


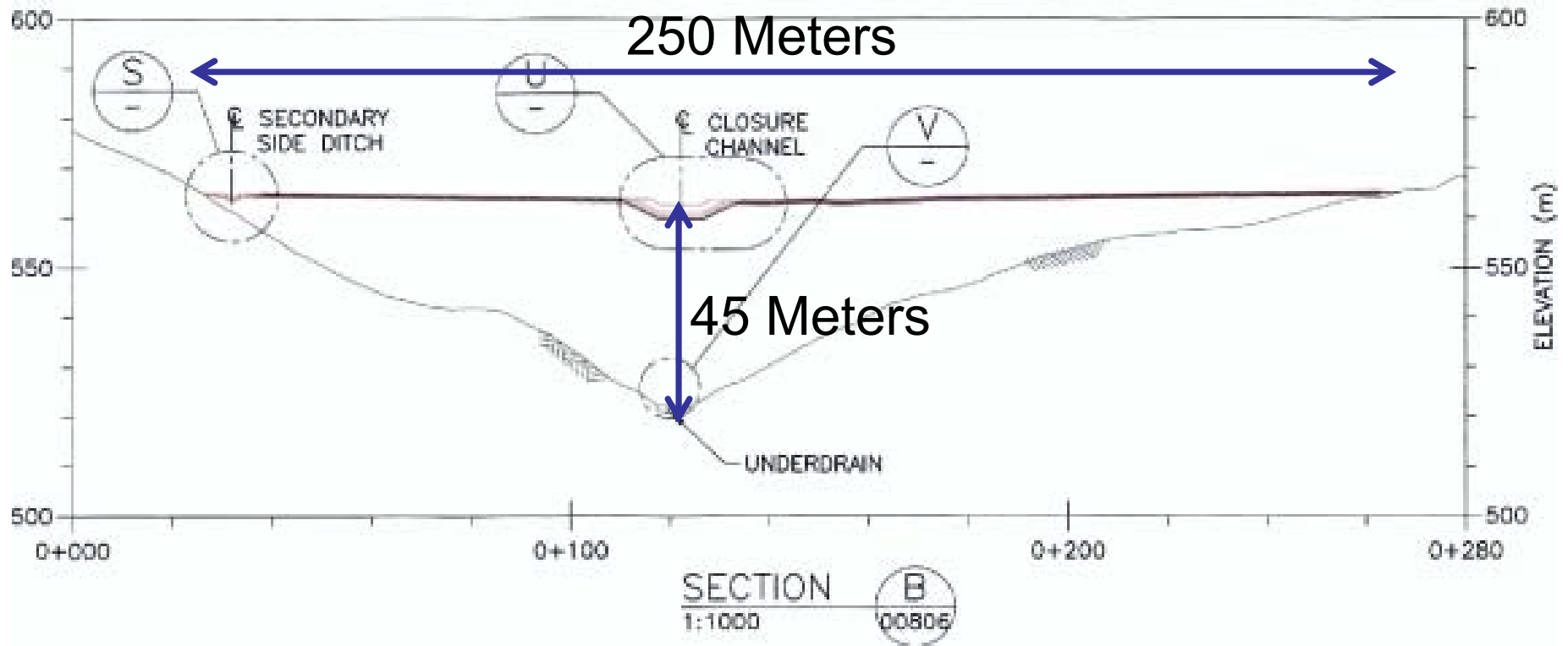


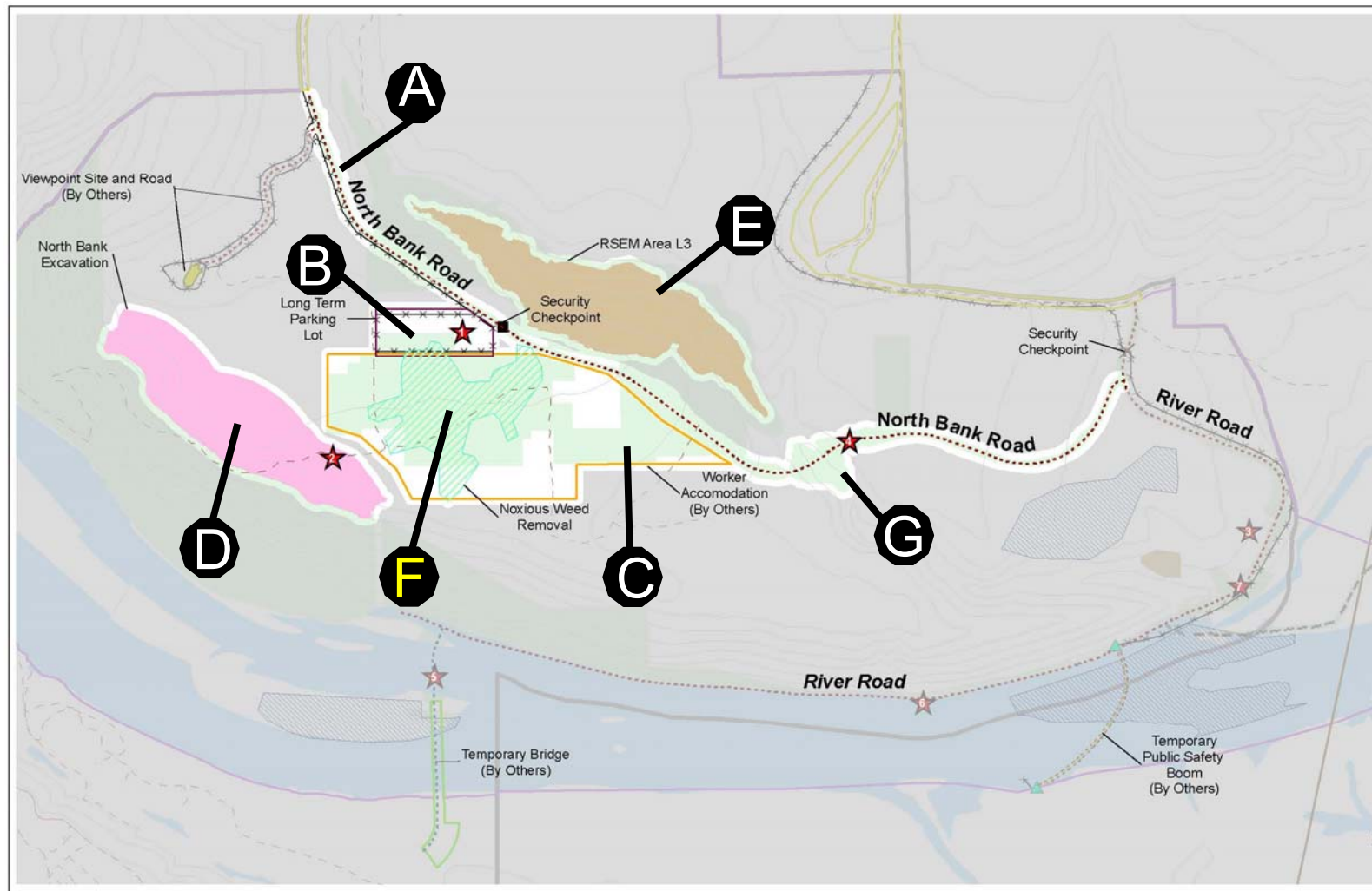


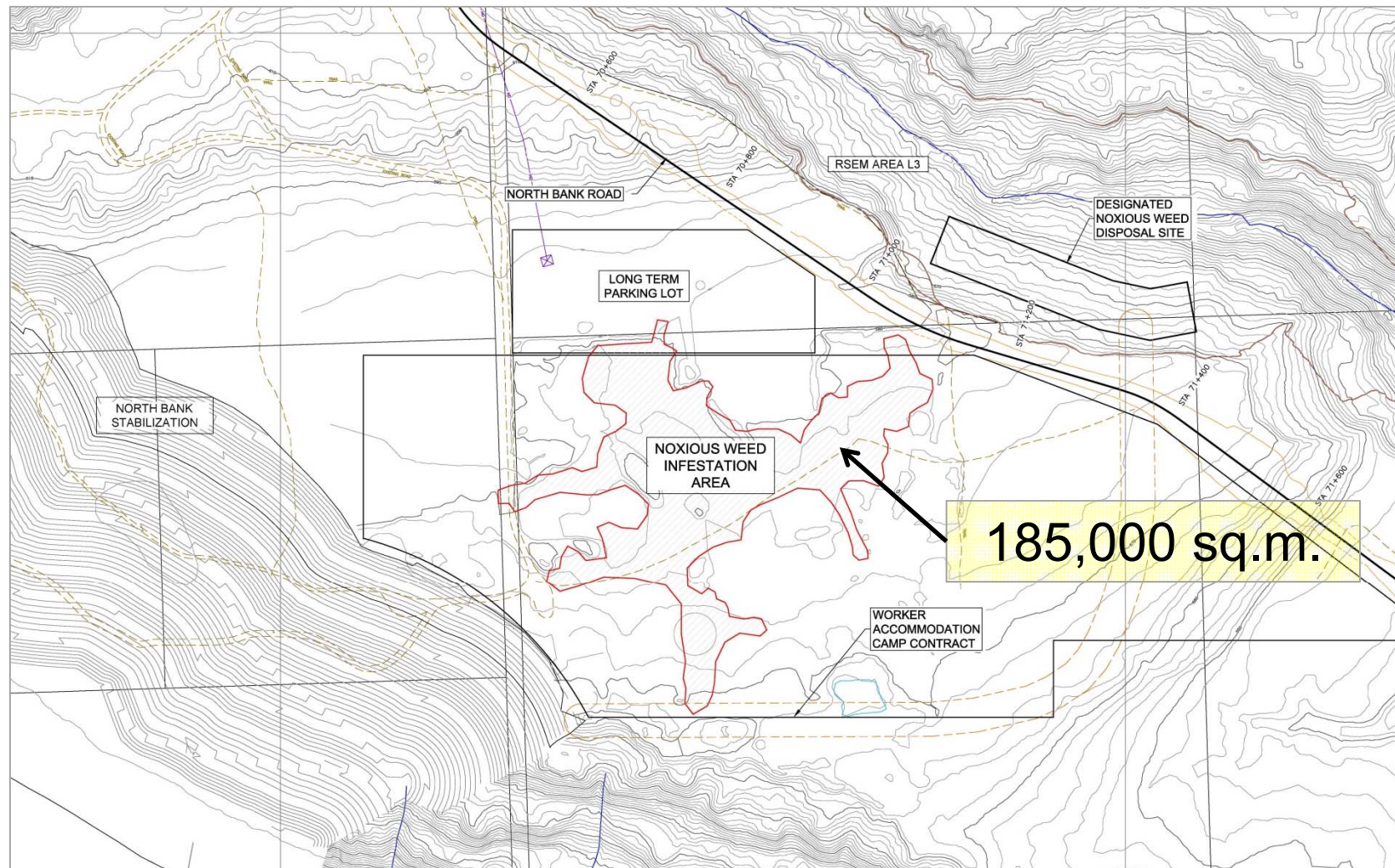
900 Meters

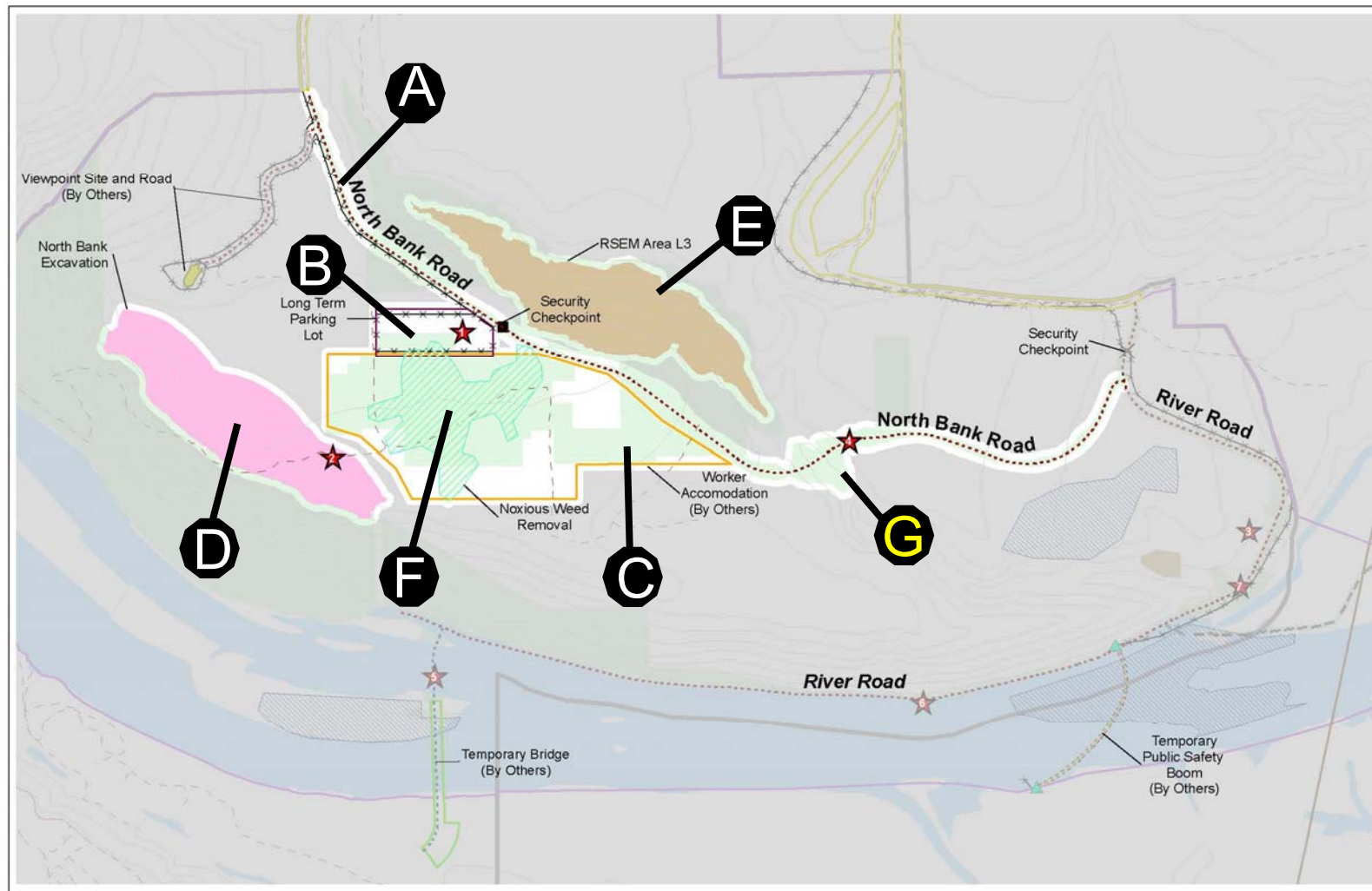
250 Meters



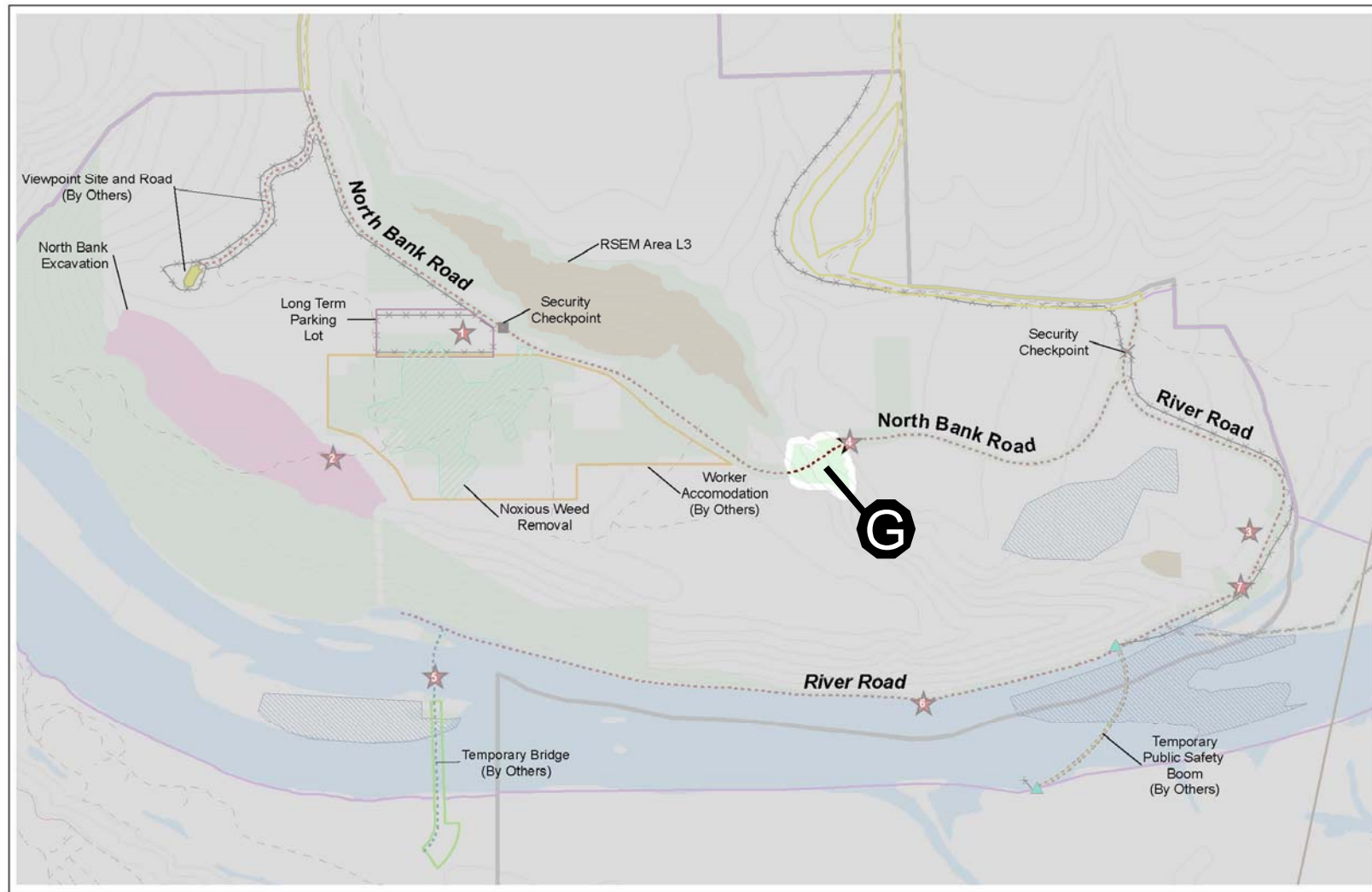


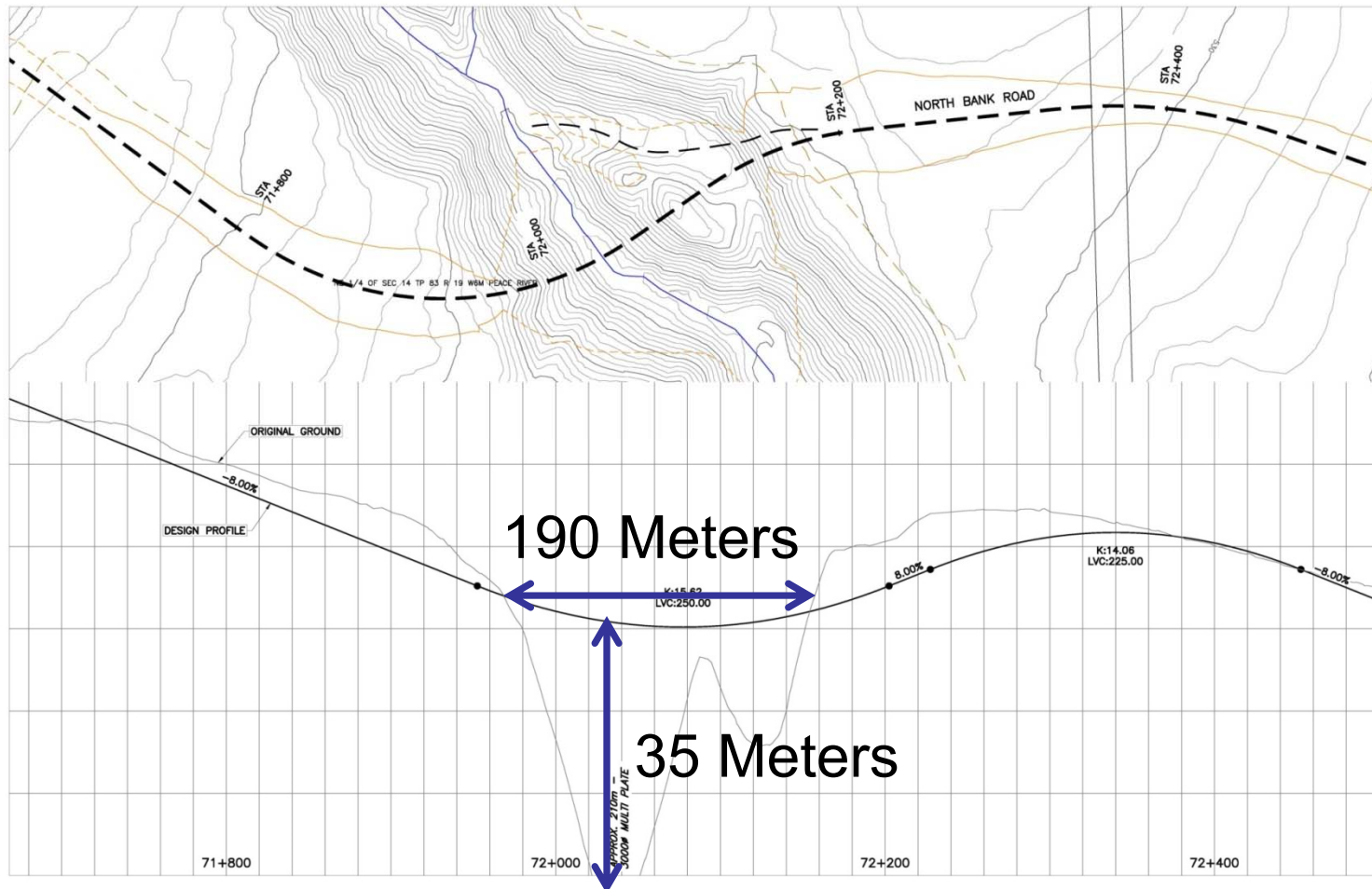




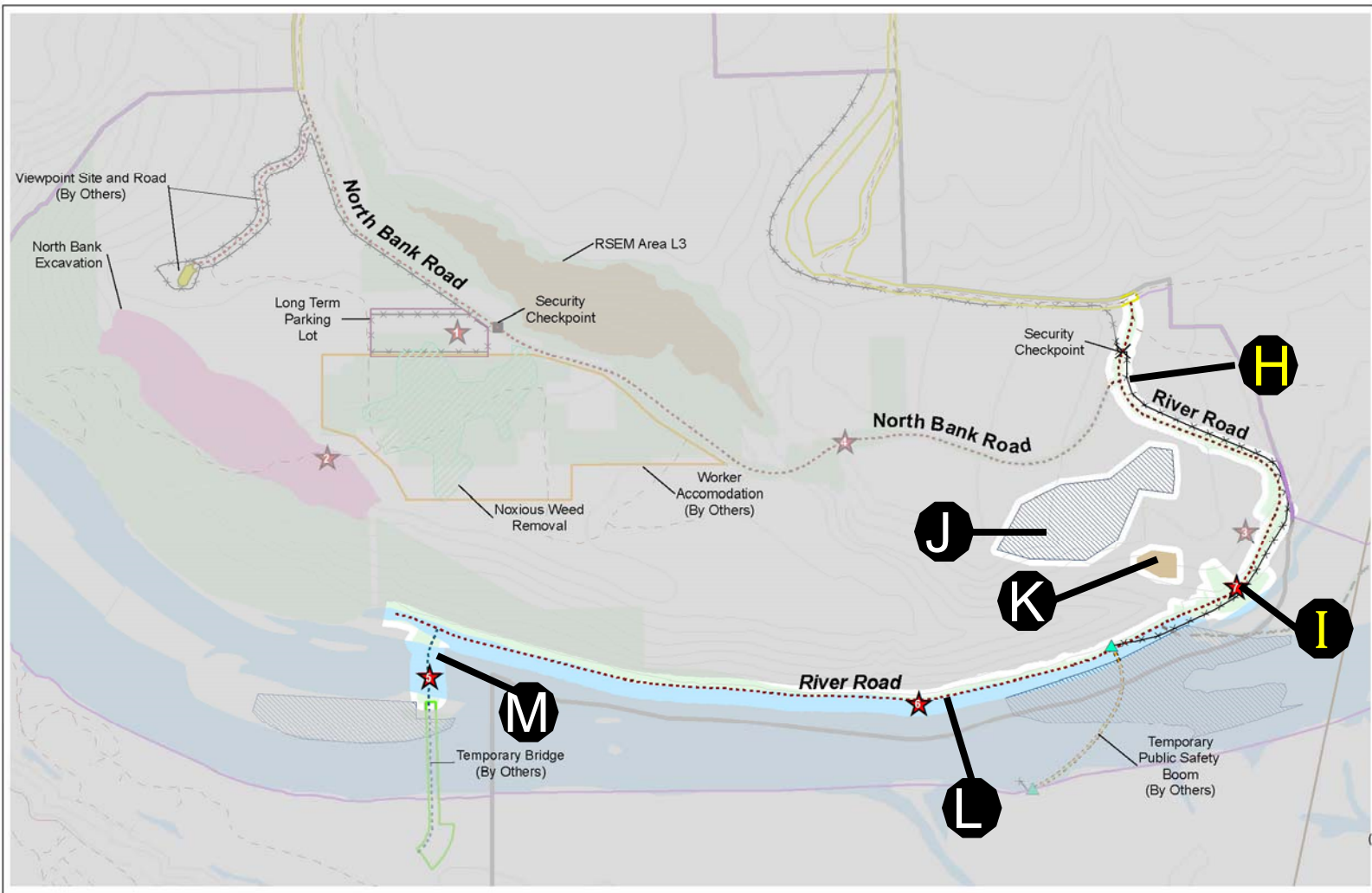


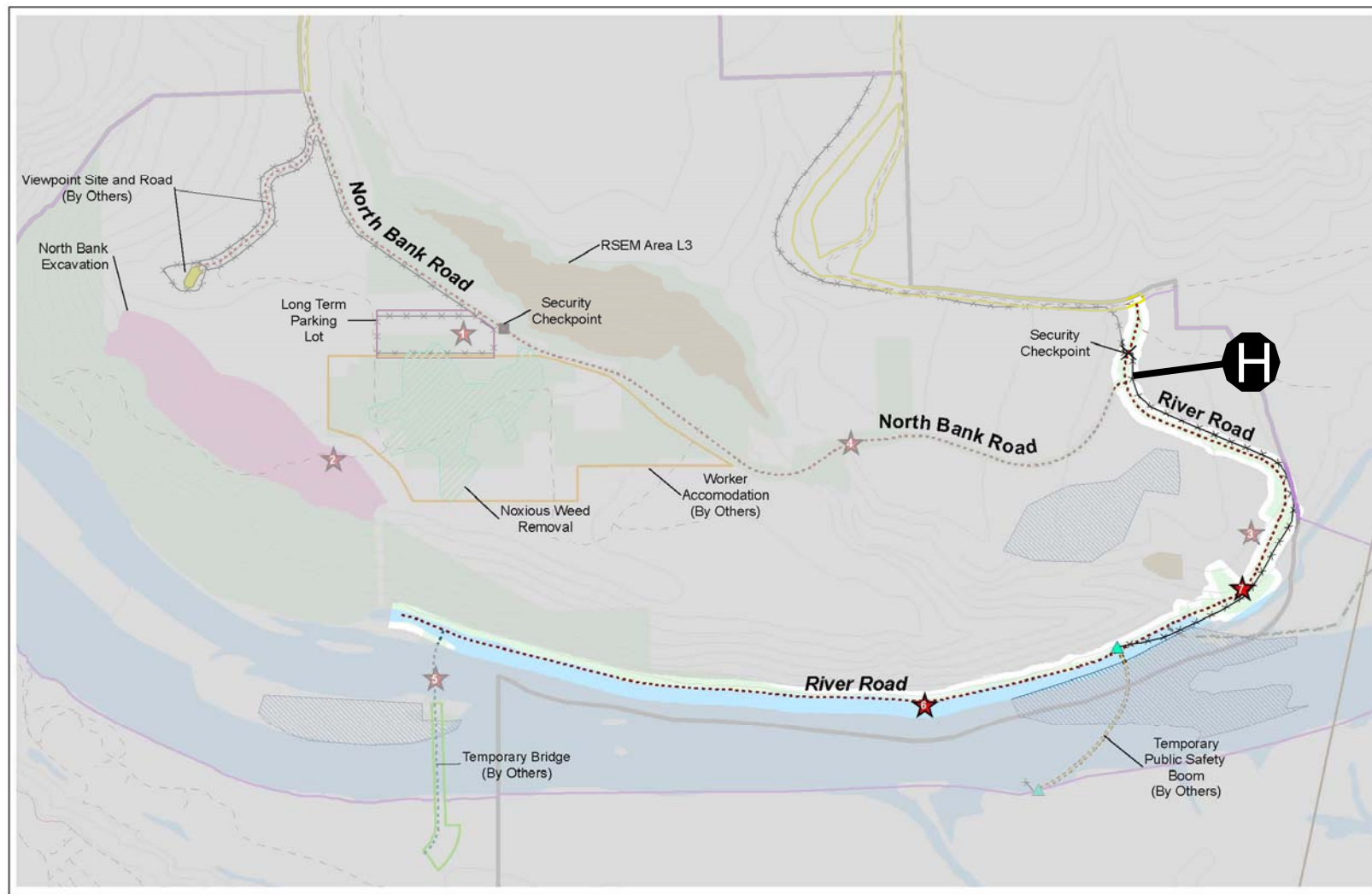
North Bank Road Gully Crossing

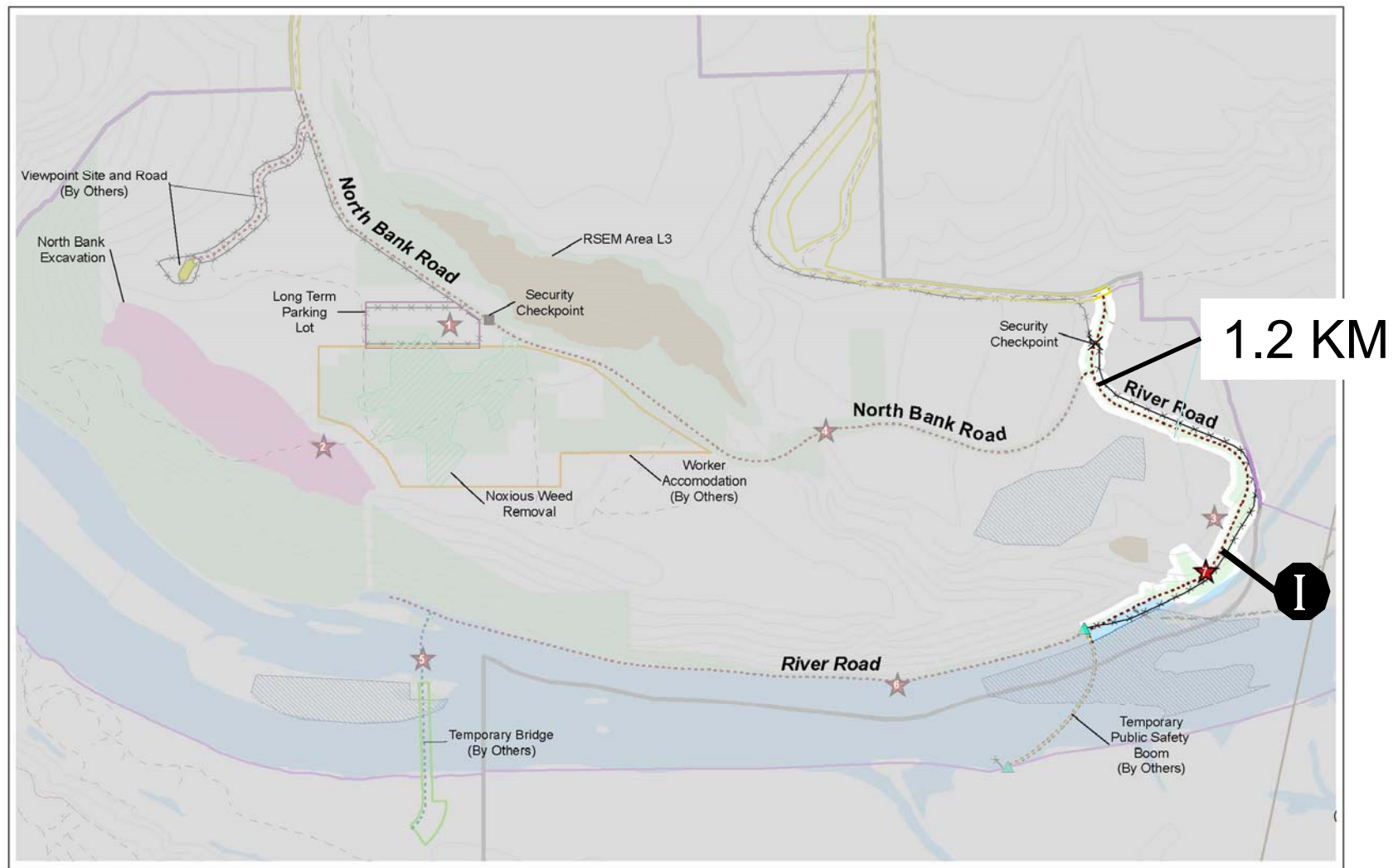




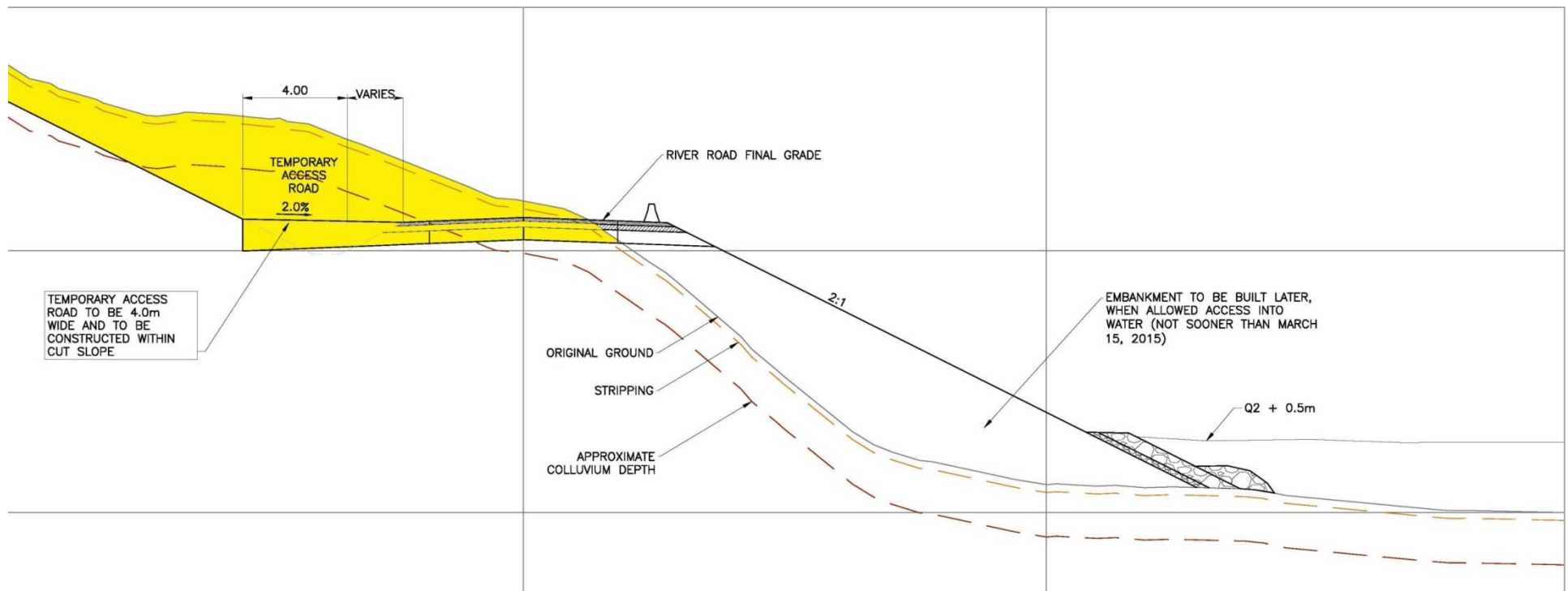




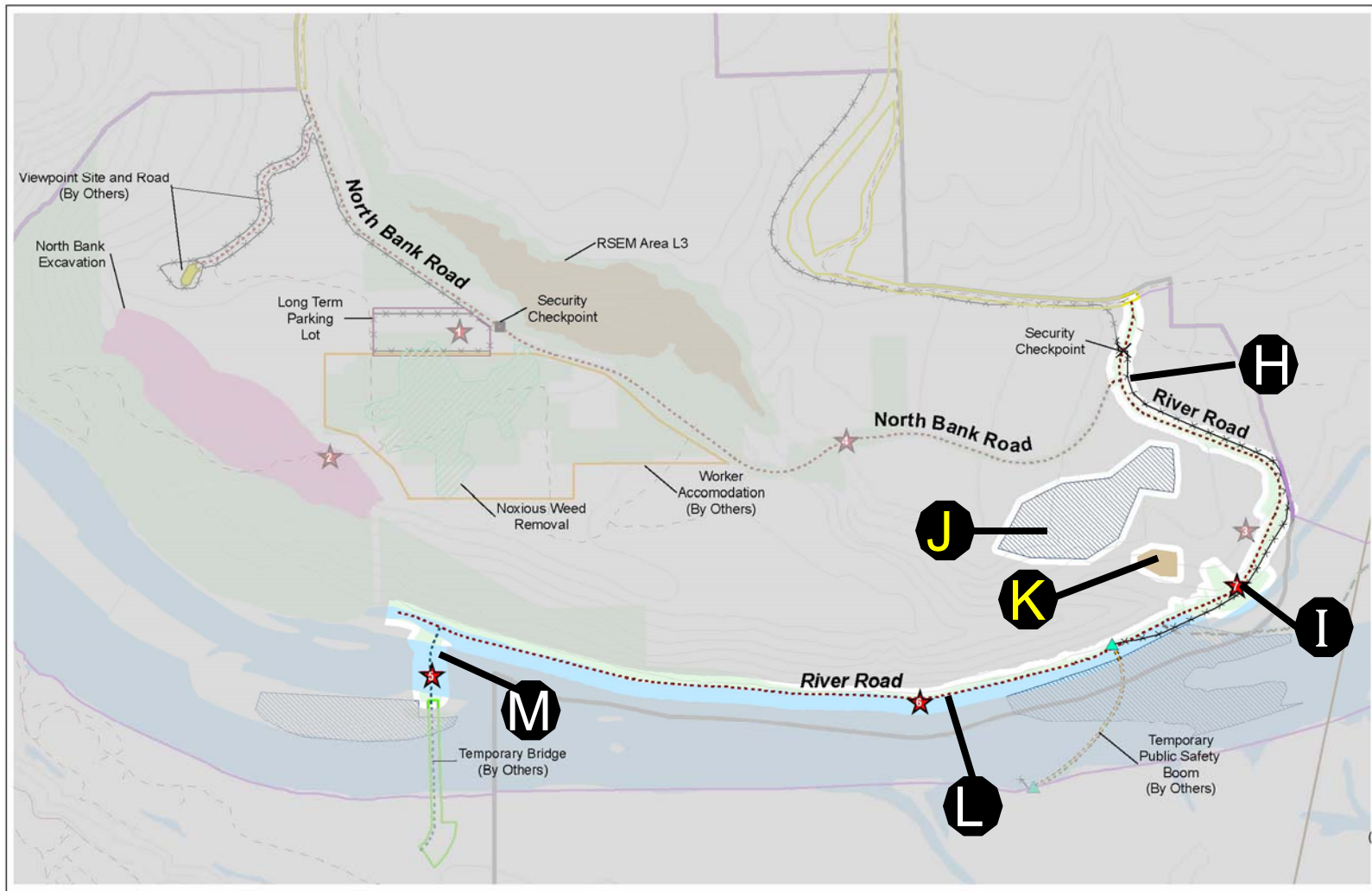


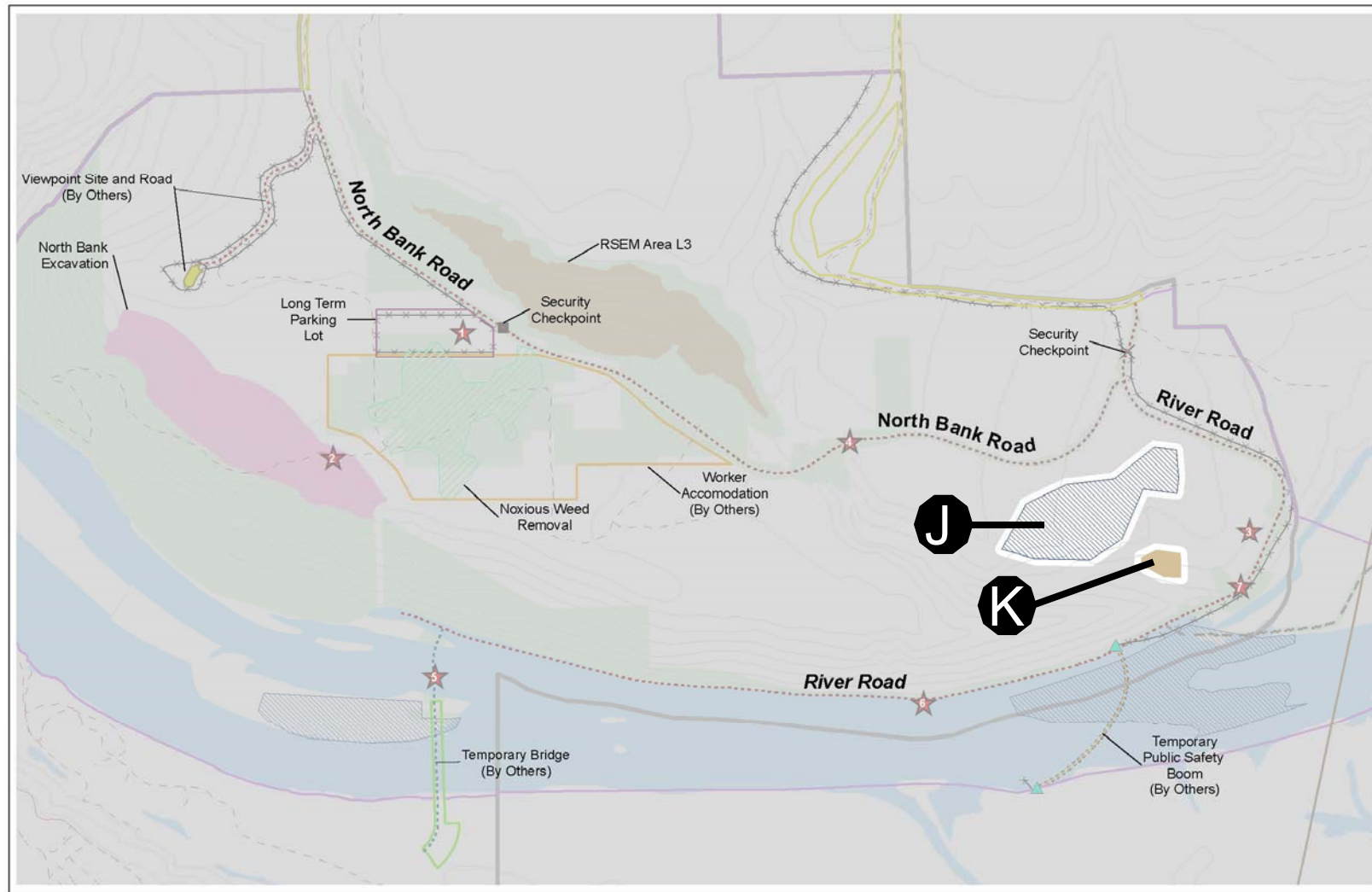


I River Road Land Portion Cross-Section

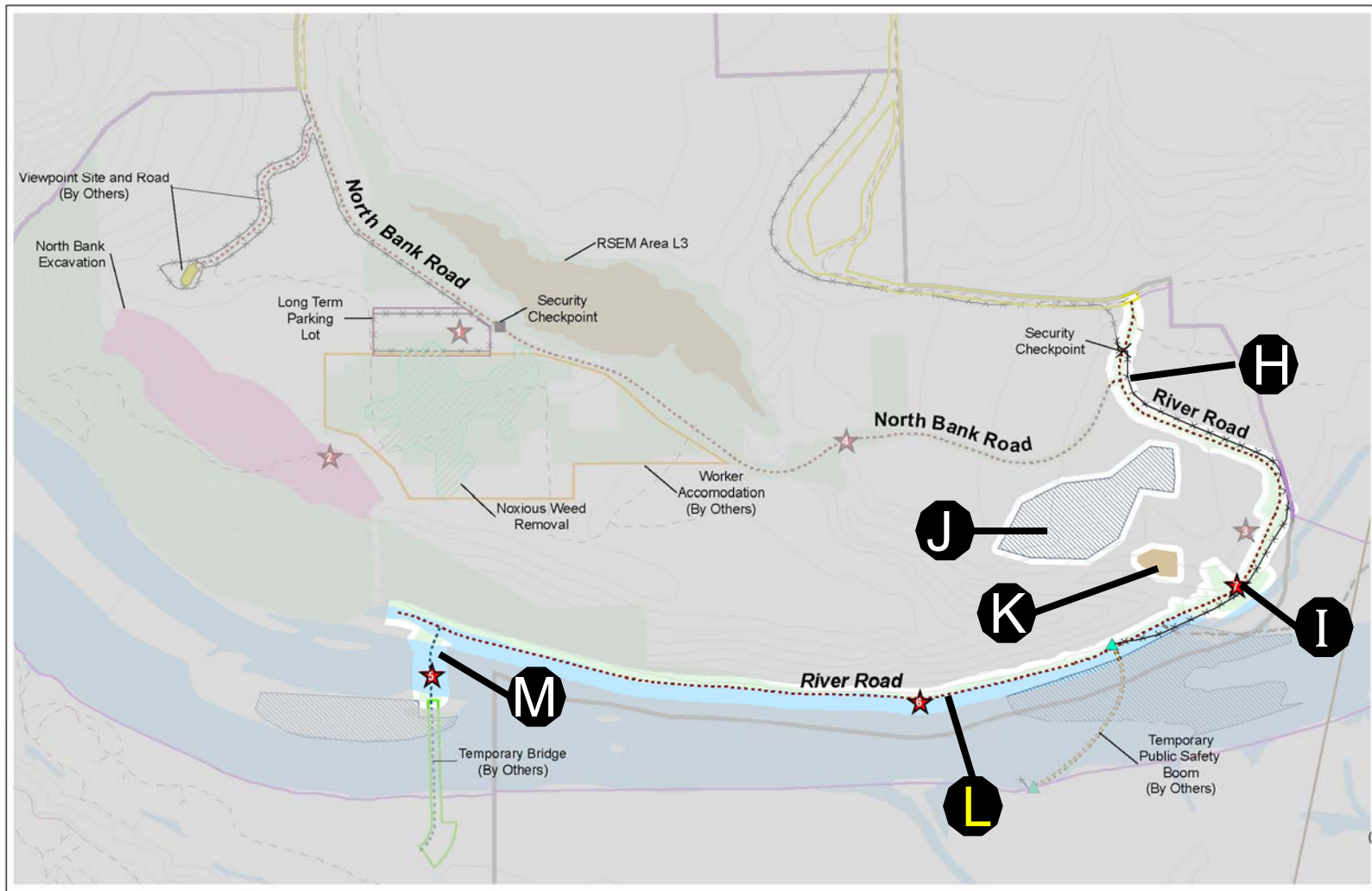


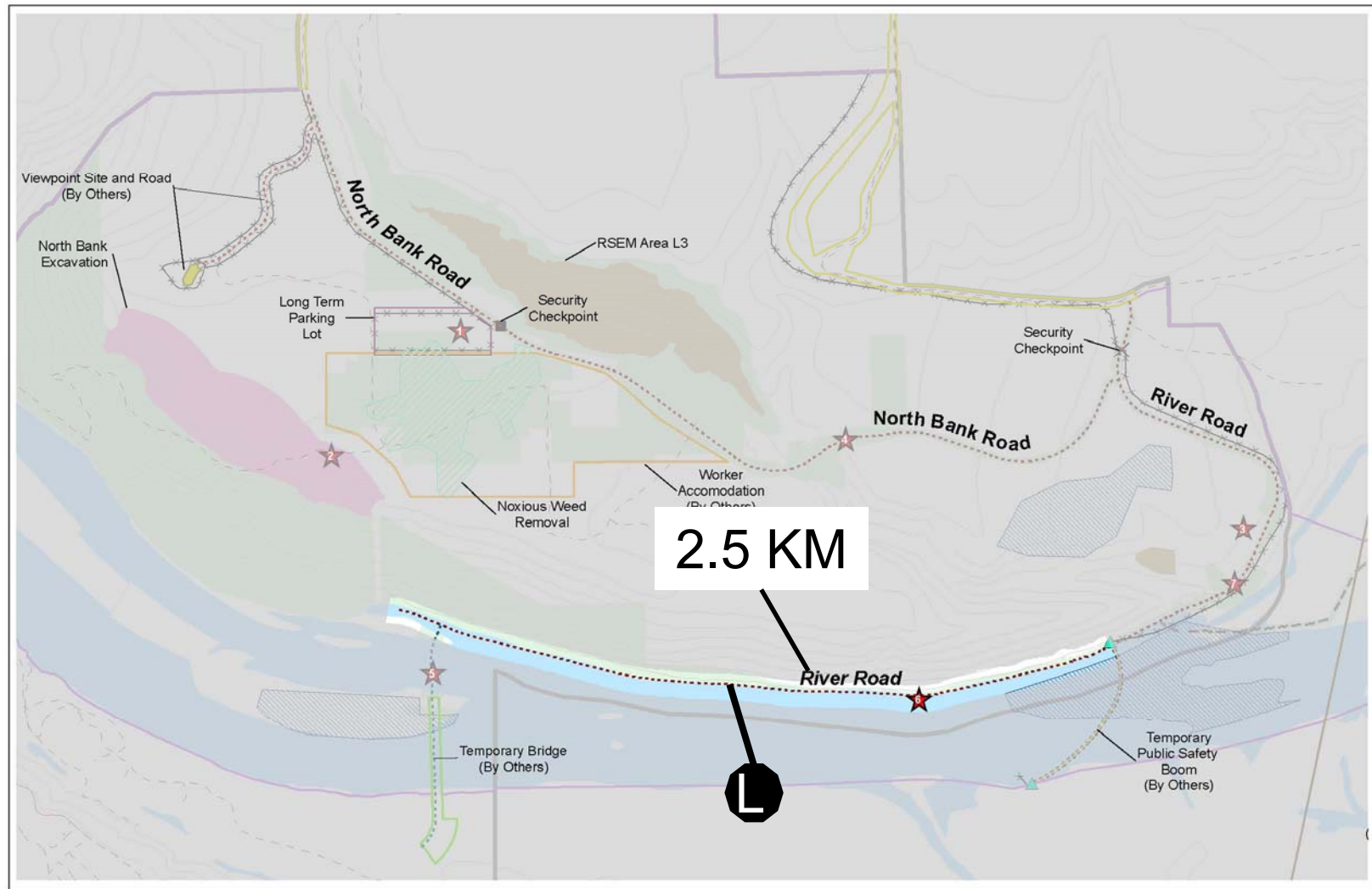


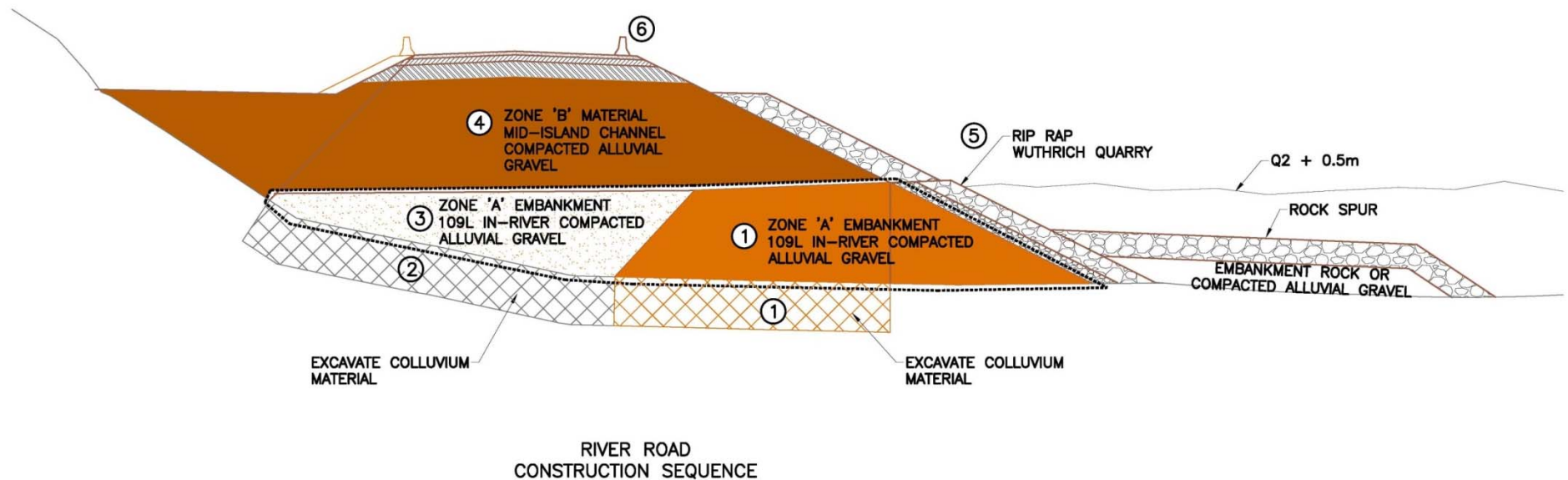




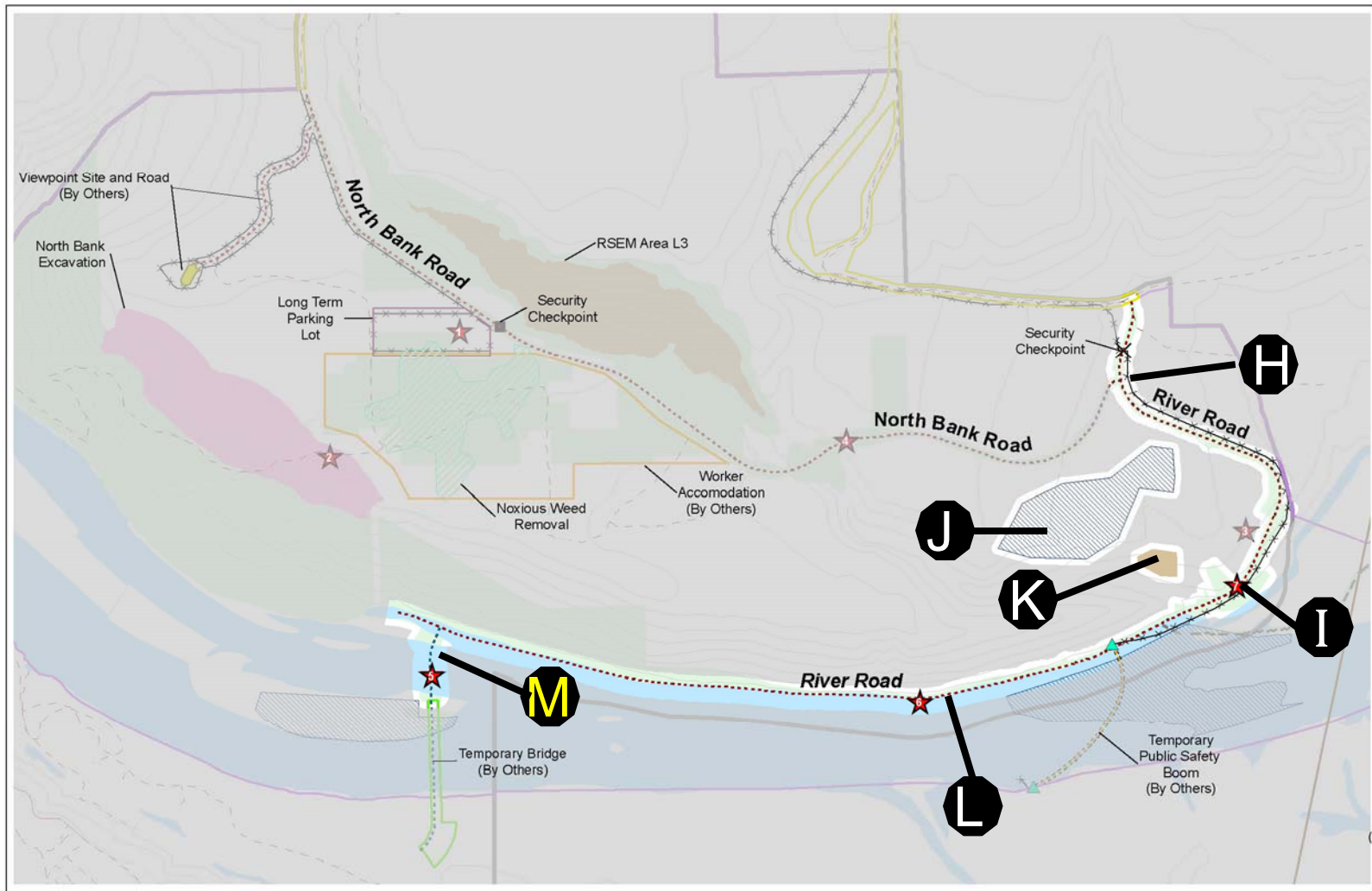


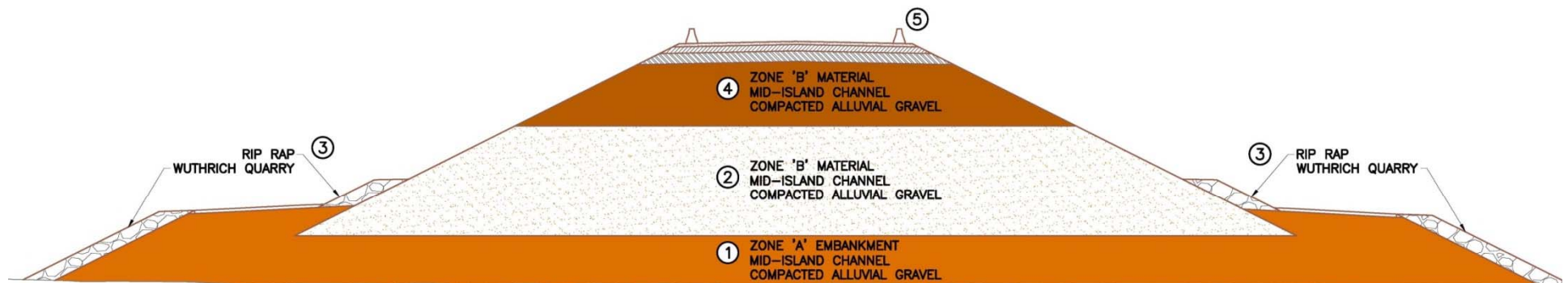






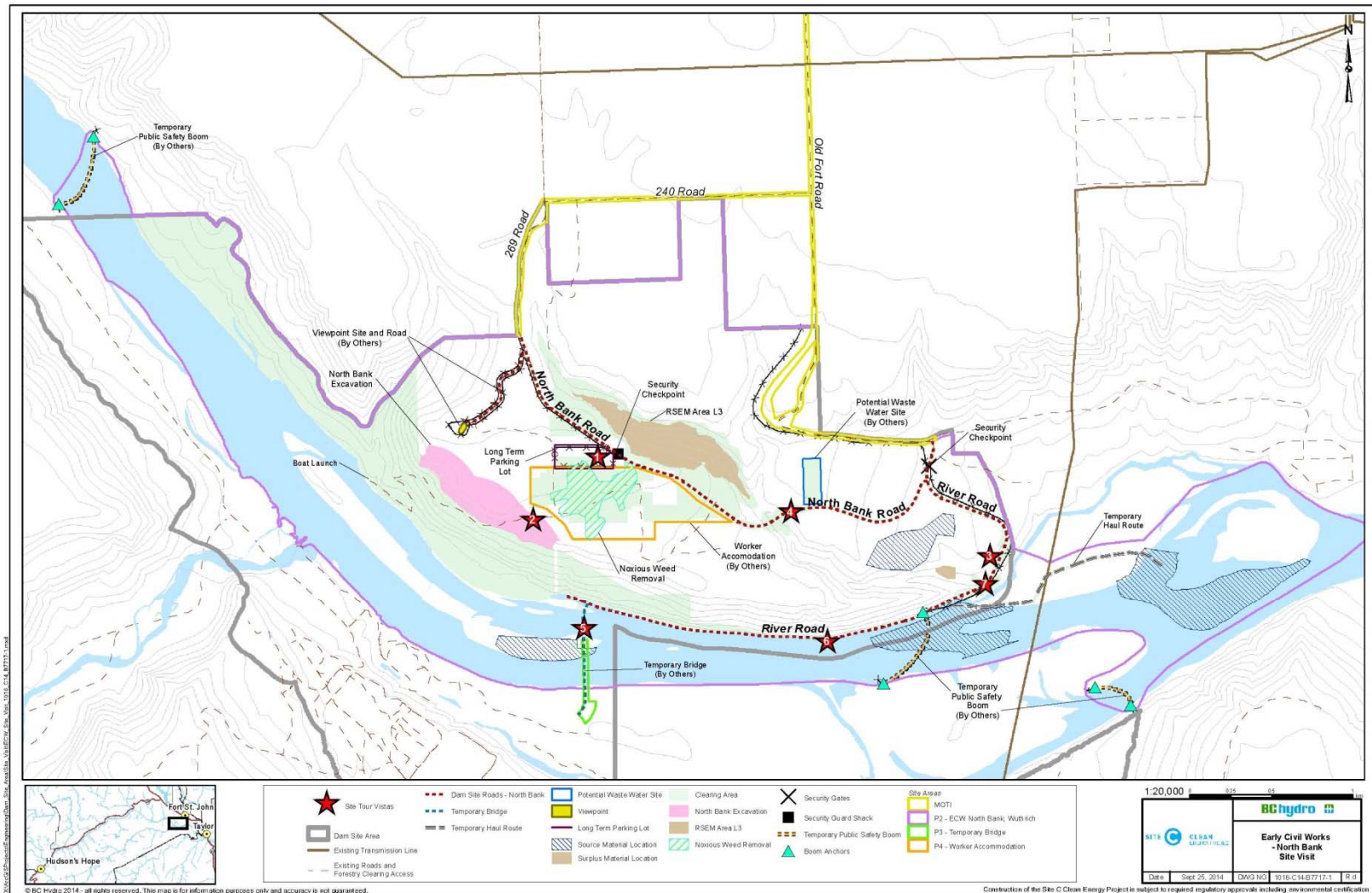




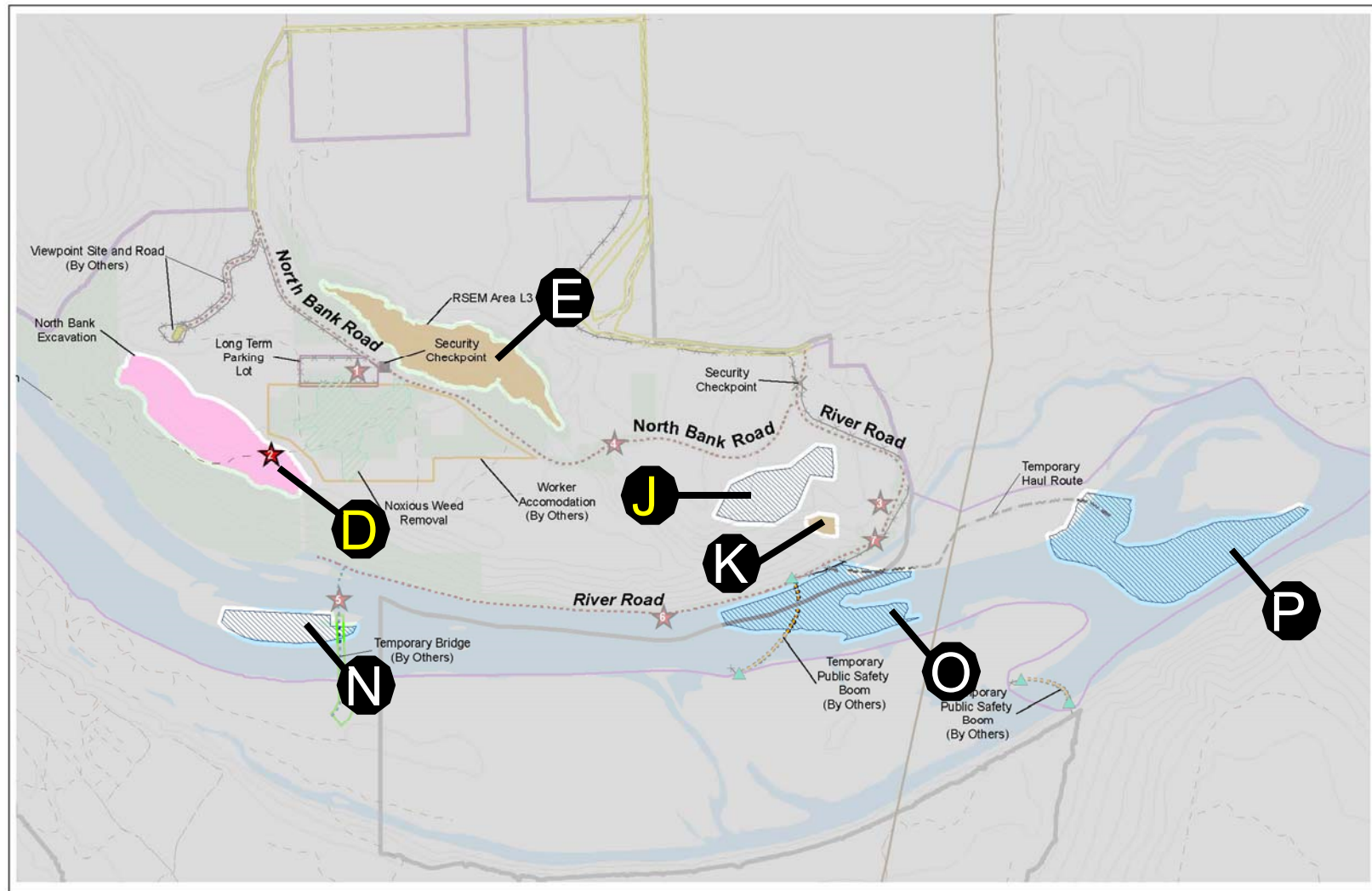


NORTH BRIDGE APPROACH
CONSTRUCTION SEQUENCE

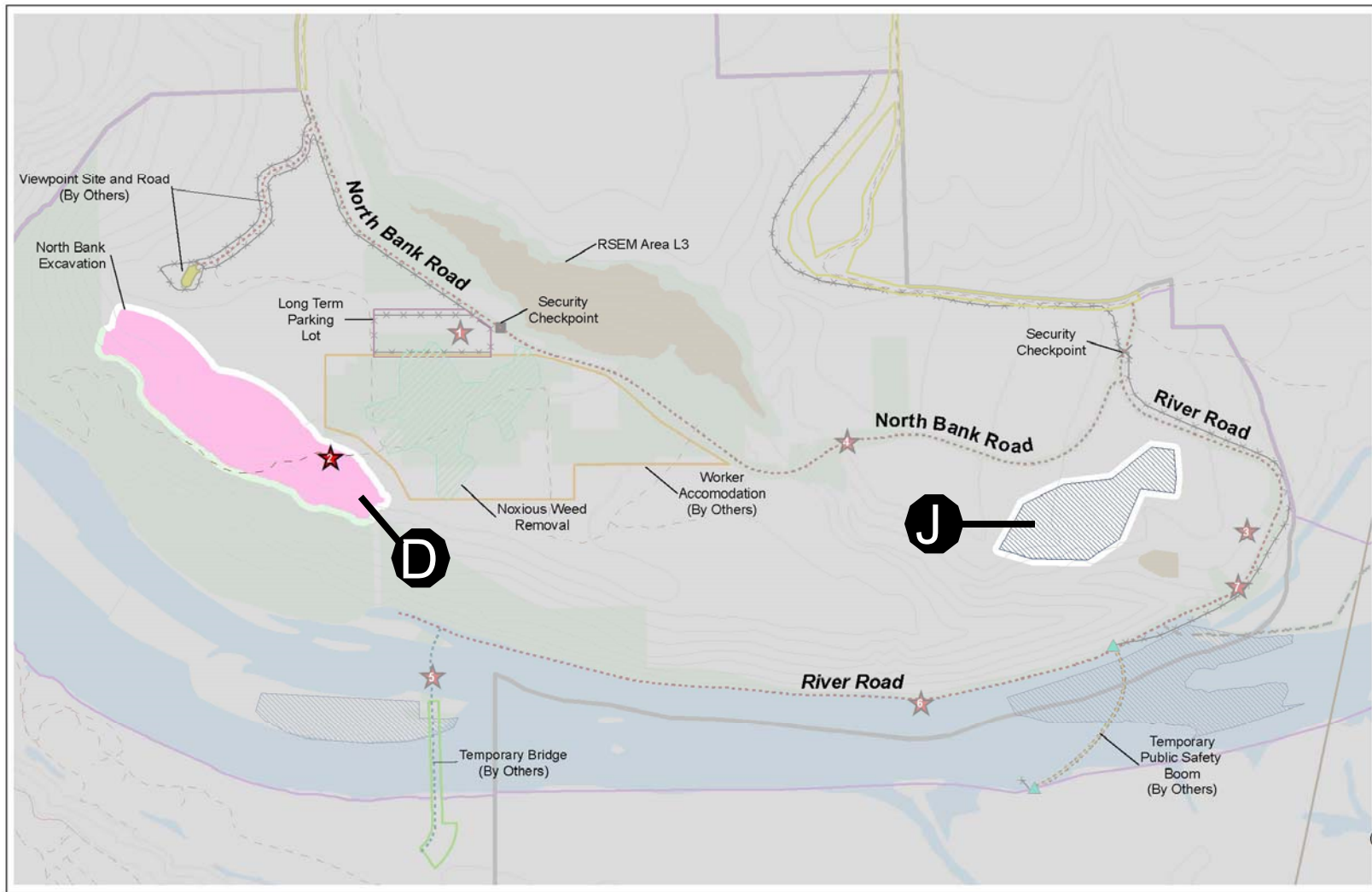
Onsite Aggregate Sources and Disposal Sites



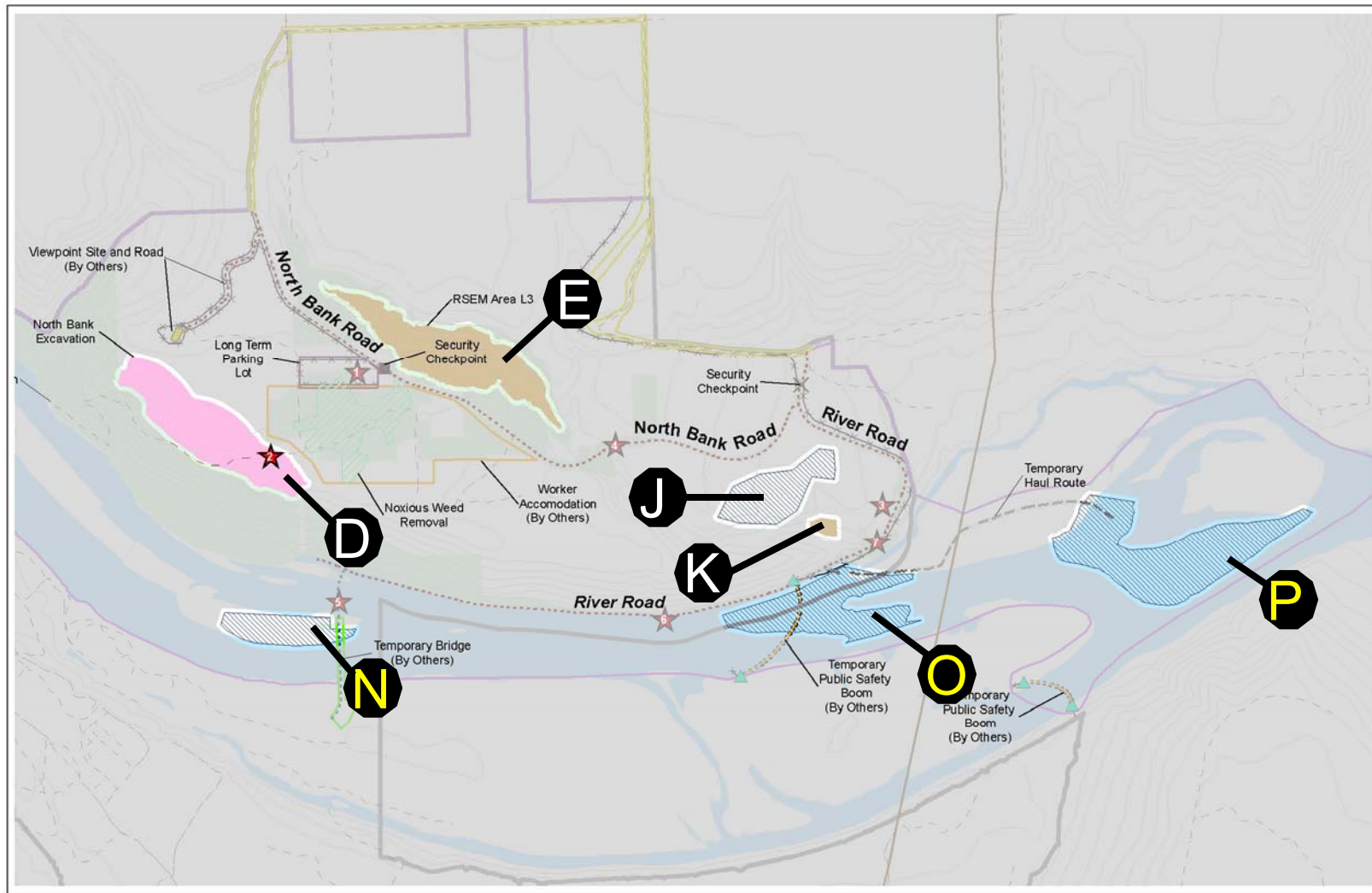
Onsite Aggregate Sources and Disposal Sites



Onsite Aggregate Sources on Land

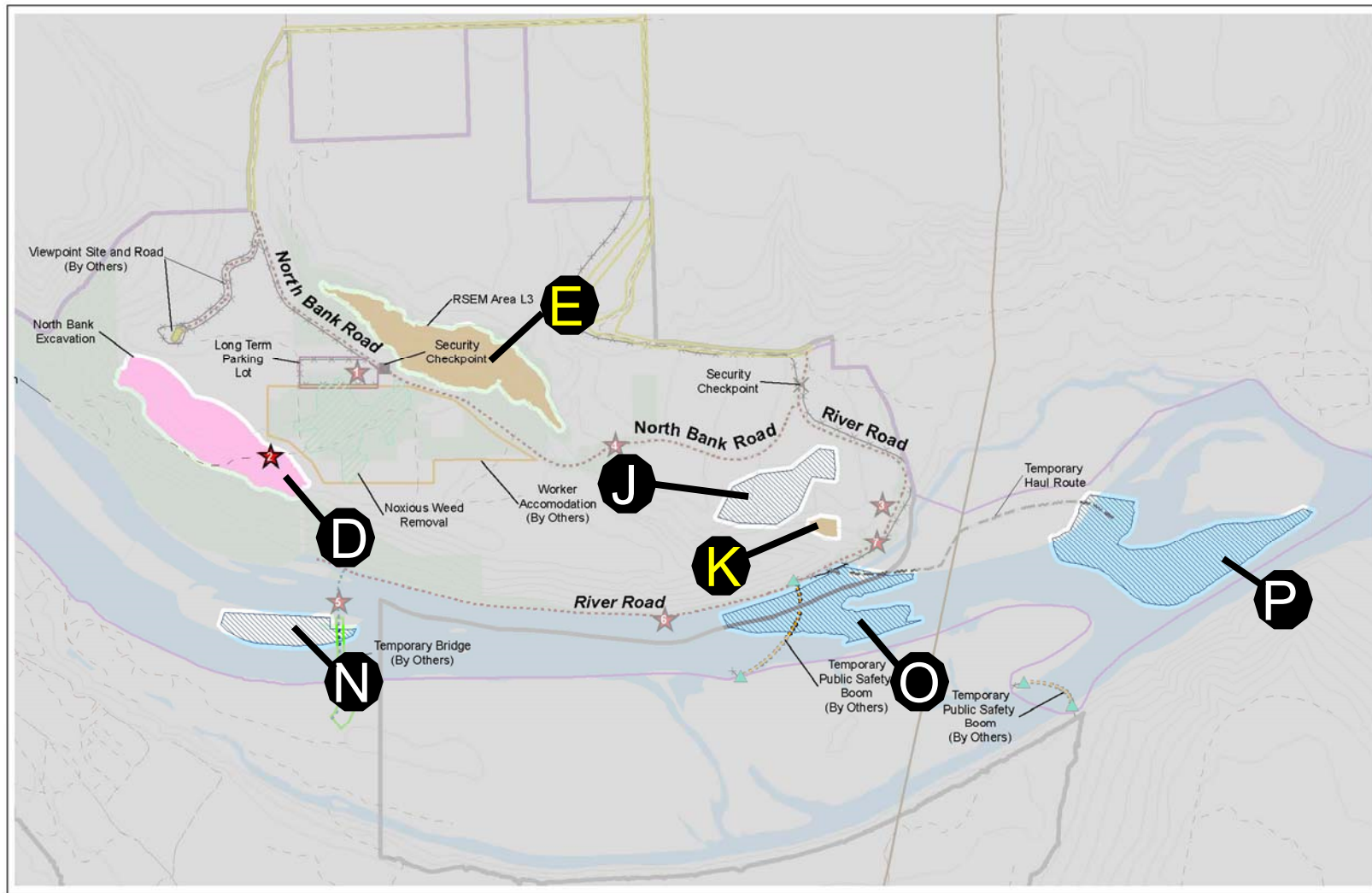


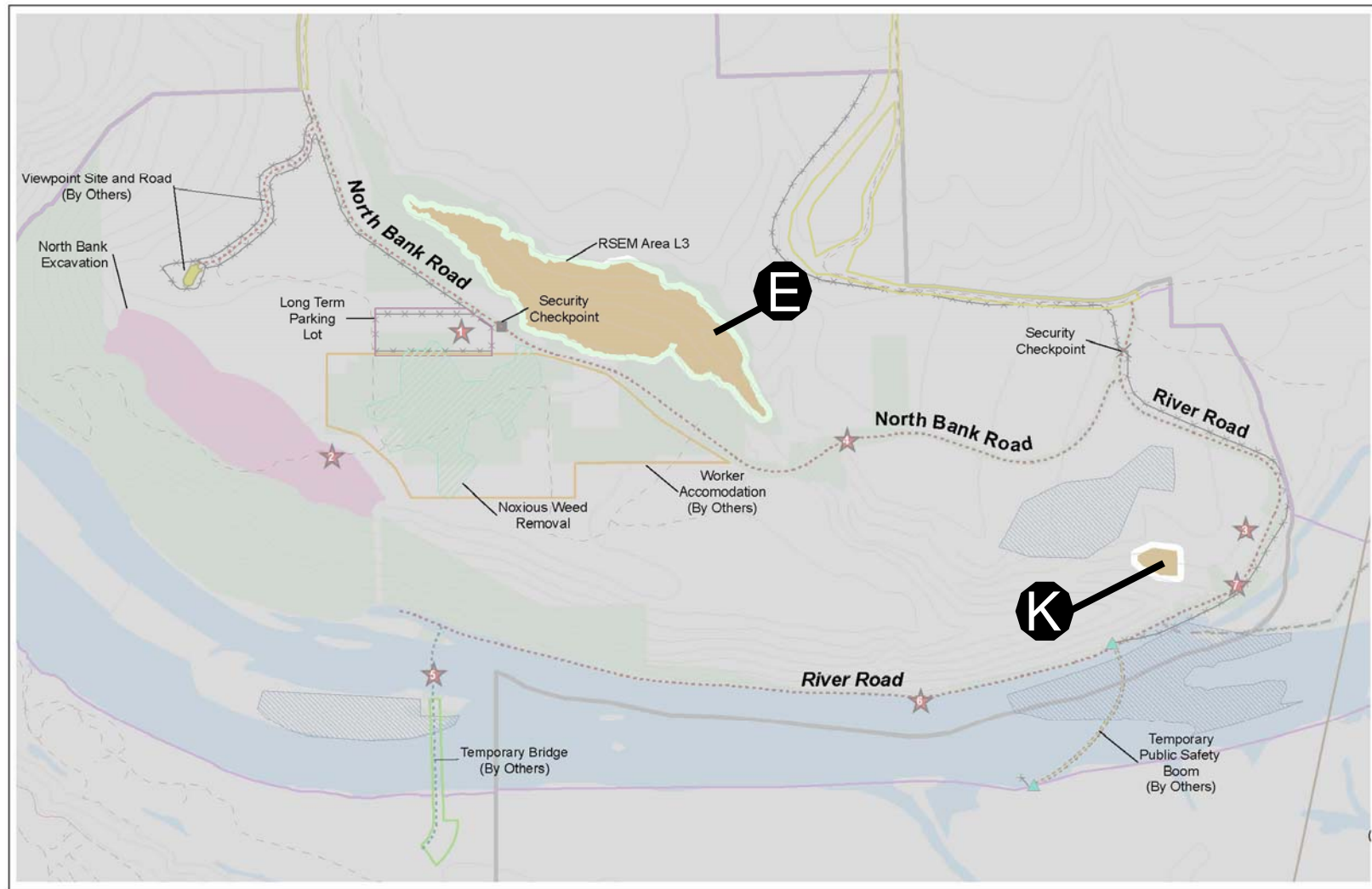
Onsite Aggregate Sources and Disposal Sites

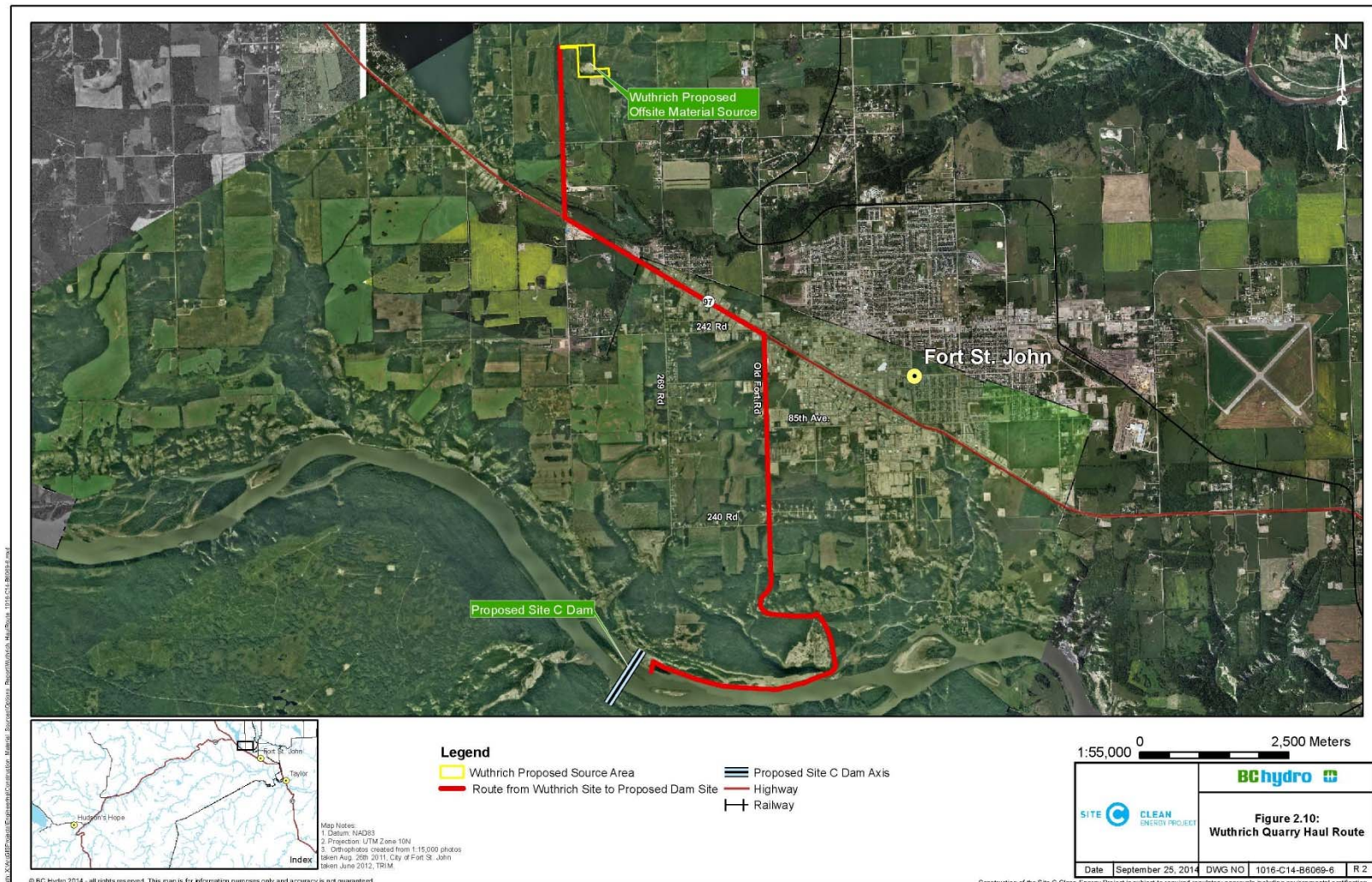




Onsite Aggregate Sources and Disposal Sites







Site Preparation

North Bank

Visitor Safety Orientation

- All access to the site during this visit will be from the designated meeting place under escort/supervision of BC Hydro personnel.
- Respondents to the BC Bid notice that registered for the North Bank Site Tour should only visit the site as arranged by BC Hydro, not independently.

- **Access road traffic**
 - Be aware of surroundings and hazards from vehicle traffic and mobile machinery.
- **Wildlife**
 - Black bears, deer, moose, elk, and cattle exist around the work sites. Please report sightings to the tour guide.
- **Slips, trips, and falls**
 - Walking surfaces may be uneven and slippery. Watch footing at all times while on site.

- **While at site**
 - Stay with the group.
 - Boat passengers will receive an orientation from the boat operator.
 - If you observe any unusual or unsafe conditions, please advise your tour guide.
 - Notify site medic of any significant health conditions or allergies.
- **First aid and emergencies**
 - For first aid or emergencies, advise the tour guide immediately who will then call for a first aid attendant.

Site Visit – North Bank

	Group A&B	Group A	Group B
0730 - 0800	Registration		
0800 - 0830	Overview Site Orientation		
0830 - 0900			
0900 - 0930			
0930- 1000	Muster to:	North Bank	Wuthrich Quarry
1000 - 1030		NB Site Tour	WQ tour
1030 - 1100			Travel to Site
1100- 1130			River Tour
1130 - 1200			lunch
1200 - 1230			
1230 - 1300		lunch	NB Site Tour
1300 - 1330		River tour	
1330 - 1400		Travel to WQ	
1400 - 1430		WQ tour	
1430 - 1500			
1500 - 1530			
1530 - 1600			
1600 - 1630	Travel to Hotel		
1630 -1700	Debrief		
1630 - 1700			

Timeline	Key Activities
Late October 2014	Anticipate initiating procurement
November	Procurement anticipated to close after four weeks
December	Contract Award (subject to project approvals)
February 2015	Contractor starts work on-site

