

SITE C PROJECT CONSTRUCTION

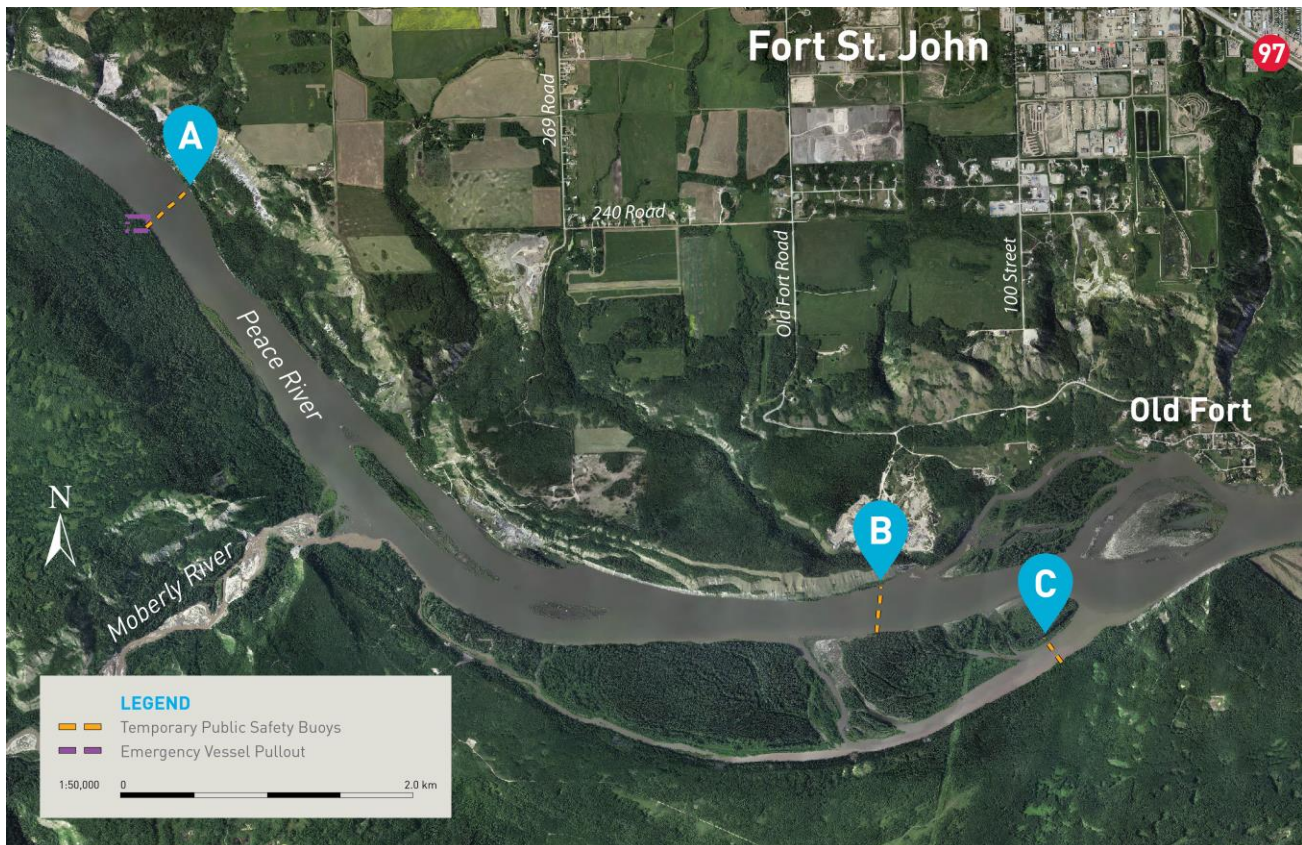
PEACE RIVER NAVIGATION: INSTALLATION OF PUBLIC SAFETY BUOYS

To support public and worker safety during construction, public safety buoys will be installed upstream and downstream of the Site C dam site in late-November and December. The buoys will be installed at three locations (see map below):

- A.** 3.0 kilometres upstream of the dam site
- B.** 3.5 kilometres downstream of the dam site at the mouth of the north bank Old Fort side channel
- C.** 3.5 kilometres downstream of the dam site at the end of the south bank side channel

The public safety buoys will provide a clear demarcation of the dam site construction area. Upon installation of the buoys, shoreline access in the construction area will be restricted. While shoreline access will not be allowed for safety reasons, boaters will be able to travel on the Peace River past the public safety buoys and through the dam site area until further notice. For boater and worker safety, boaters will need to stay clear of active in-river work areas, which will be clearly identified with additional signage and markings.

The public safety buoys will consist of individual buoys in a line across the river, with each buoy individually moored to the riverbed with a chain and anchor. Yellow flashing warning lights will be placed on the public safety buoys nearest to both banks of the Peace River, as well as on the safety buoys at approximately 100 metre intervals.



Additional Information

- In addition to the public safety buoys, a patrol boat will be actively monitoring boat traffic.
- Boaters will be notified of dam site navigation hazards through signage installed at boat launches upstream and downstream of the dam site.
- Please use caution and observe all signs when recreating near the dam site at all times of year.