

Ken McKenzie  
Executive Vice President  
Site C Clean Energy Project  
P.O. Box 49260  
Vancouver, B.C. V7X 1V5

December 1, 2021

**Re: Notice of Site C Construction Activities: January – March 2022**

As part of our engagement with Indigenous groups, we provide regular updates and information on construction activities. This letter describes work planned from January 1 to March 31, 2022.

**COVID-19 update**

We continue to work closely with health officials, local communities, contractors and unions to monitor and respond to the COVID-19 pandemic. On October 7, 2021, BC Hydro announced a [COVID-19 vaccination policy](#) that requires all employees and contractor workers to be fully vaccinated.

Since BC Hydro's vaccination policy was announced, we have seen an increase in workers registering for a COVID-19 vaccine through the project's onsite medical clinic. We recognize the pandemic is not over and will continue to remain vigilant in our efforts to keep our workers and the surrounding communities safe.

Safety continues to be our top priority. We are committed to safely and responsibly advancing the Site C project, while protecting the workforce and the local community. You can keep up-to-date with our COVID-19 measures [here](#).

**For the upcoming period, construction at Site C will focus on:**

- Progression of earthworks at the dam site.
- Construction of the powerhouse and spillways.
- Installation of steel piles as part of the right bank foundation enhancement work.
- Transmission line construction, including access road maintenance, site reclamation, debris burning, line stringing and slope stabilization measures above the dam site.
- Highway 29 realignments at Cache Creek, Farrell Creek and Lynx Creek.
- Clearing, road maintenance, road construction and debris burning in areas of the future reservoir.
- Construction of a 2.6-kilometre shoreline protection berm in Hudson's Hope.
- Processing, stockpiling and loading of rock at Portage Mountain Quarry, which will be hauled to various Highway 29 construction sites and the Hudson's Hope berm.
- On-call archaeological studies, as required.

For all activities described in this letter, the [necessary approvals](#) will have been obtained before work begins. Geotechnical site investigations, air quality monitoring, heritage and other field studies are ongoing. We will continue to provide [annual field study notices](#) of these activities.

For the safety of the public and workers, please use caution when hunting, shooting, or setting traps in Site C project areas.

## Dam site

- **Access roads:**
  - Crews will continue to maintain dam site access roads and existing south bank resource roads, including petroleum development roads.
- **Headpond:**
  - During river diversion, water accumulates behind the upstream cofferdam in what is called a headpond. The headpond begins at the dam site and could extend as far back as 15 kilometres – or approximately up to Cache Creek.
  - This means water levels could rapidly rise in areas upstream of the dam site.
  - The Peace River remains closed both upstream and downstream of the dam site; caution should be exercised at the shoreline.
  - The debris boom on the Peace River has been removed for the winter. The debris management structures on the Moberly River capture floating debris and prevent it from impacting construction and diversion tunnel operations.
- **Main civil works:** Construction activities will continue. This includes:
  - Excavation of the approach channel.
  - Relocation of excavated material to disposal areas located on the north and south banks of the river at the dam site area.
  - Construction of the south bank and north bank drainage tunnels.
  - Concrete production.
  - Grouting of the main dam grout curtain and consolidation grouting (right bank and dam core complete, left bank remains).
  - Earthfill dam placements and other civil works.
  - Rail delivery of riprap to site.
  - Haul road realignments.
  - Installation of steel piles as part of the right bank foundation enhancements. The piles extend the foundation further into the bedrock.
- **Generating station and spillways:**
  - Concrete will continue to be placed in powerhouse intake areas.
  - Sections of the steel penstocks will continue to be delivered to site, where they are assembled, installed and encased in concrete.
  - Construction of the spillway stilling basin will continue.
  - Transition block and spillway headworks construction will continue.
- **Turbines and generators:**
  - Deliveries to site will continue. The four remaining turbine runners will be delivered to site in early 2022.
  - Installation and welding in the powerhouse will continue.

## Public roads and highways

- **Highway 29**
  - **Cache Creek East:** Construction of the bridge will continue. This includes the installation of bearings and structural steel on the completed concrete foundations, and may also include the installation of precast concrete deck panels on the steel girders. Delivery of concrete deck panels will occur.
  - **Halfway River:** Construction will be paused until spring 2022. Only minor site maintenance will occur. A concrete batch plant will continue to operate on site to supply concrete to other highway segments.
  - **Farrell Creek East:** Construction will be paused until spring 2022. Only minor site maintenance will occur.
  - **Farrell Creek:** Construction will continue on the bridge, including the installation of structural steel on the completed foundations, and the installation of precast concrete deck panels on the girders. Steel bridge girder and precast concrete deck panel deliveries will continue.
  - **Dry Creek:** Construction will be paused until spring 2022.
  - **Lynx Creek:** Construction of the highway realignment will continue. The delivery of the pre-cast concrete deck may occur. A traffic detour at the east end of the work site will be in place until 2022. Periodic traffic stoppages will occur.

## Peace River/reservoir

- **River closure:** A short section of the Peace River is permanently closed at the dam site as construction is underway on the earthfill dam.
- **In-river debris management systems:** Debris management structures are in place on the Moberly River. The boom on the Peace River has been removed for the winter.
- **Fish habitat enhancement project:** Access road construction and fish habitat enhancement work will occur on the south bank downstream from Peace Canyon dam.
- **Archaeology:** On-call archaeological studies, as required, anywhere on the project.
- **Transmission line relocation:** Access road improvements and foundation construction will occur in the Halfway River region for the rerouting of the existing transmission line that crosses the Halfway River, which will be impacted by the new reservoir.
- **Reservoir clearing**
  - Road construction and logging activities are occurring between Cache Creek and Peace Canyon on the north and south banks of the Peace River and on its islands. Merchantable timber is being hauled to local mills in Chetwynd, Fort St John and/or Dawson Creek. Burning of waste wood may occur during approved venting windows and when ground conditions are suitable.
  - Surveys and site investigations may occur within the footprint of the reservoir area.

## Hudson's Hope shoreline protection

- Construction will continue on the Hudson's Hope shoreline protection berm.
- This may include waste wood removal.
- Riprap and berm filter material from Portage Mountain Quarry and other commercial quarries west of Chetwynd will be hauled and stockpiled at the berm site.
- Excavation, processing, stockpiling and placement of berm fill and berm filter material will occur on the berm site.
- The berm is expected to be complete by summer 2022.

## Transmission works

- **Access road maintenance:** Road maintenance on access roads will occur, to provide safe access to the transmission line.
- **Transmission line construction:**
  - Construction of the second transmission line connecting Site C to Peace Canyon will continue with marshalling of transmission line materials for line stringing. This will include flying of materials with a helicopter.
  - Line stringing will occur, including helicopter work.
- **Reclamation:** Reclamation of construction areas will occur, including levelling and spreading of topsoil and burning of debris.
- **Slope stabilization:** Slope stabilization work may occur on the transmission line right-of-way above the Site C substation.

## Production and transport of materials

- **Portage Mountain Quarry:**
  - Access roads will continue to be maintained.
  - Rock will be processed and stockpiled on site and hauled to various locations along Highway 29 and the Hudson's Hope berm.
- **85th Avenue Industrial Lands:** Till materials for the dam may continue to be quarried and stockpiled for transport next spring.
- **Conveyor belt system:** The conveyor system will pause operation for the winter and resume in spring.

## Environmental Assessment Certificate

Environmental Assessment Certificate #E14-02 (EAC) for the project consists of Schedule A, the project description, and Schedule B, the conditions under which the project must be constructed and operated. If BC Hydro wishes to make a change to either Schedule A or Schedule B of the EAC, we are required to submit a written request to the Environmental Assessment Office, which then consults with regulatory agencies, Indigenous groups and/or the public on the request and issues a written decision.

To date, we have requested and been granted seven amendments to the EAC. These are:

- Amendment 1 – regarding design changes to the generating station and spillways.
- Amendment 2 – regarding design changes to the Halfway River Bridge within the Halfway River Highway 29 realignment.

- Amendment 3 – regarding the use of West Pine Quarry, in addition to the already approved Portage Mountain Quarry, as a source of quarry and excavated material for the construction of the Highway 29 realignment, Hudson’s Hope shoreline protection, and areas along the reservoir requiring protection during reservoir filling.
- Amendment 4 – regarding the selective use of mechanical clearing in riparian zones during reservoir clearing when it is unsafe to undertake manual clearing.
- Amendment 5 – regarding a change in the alignment of Highway 29 at Cache Creek.
- Amendment 6 – regarding the expansion of the worker accommodations camp within the dam site area.
- Amendment 7 – regarding changes to the designs of Highway 29 crossings at Farrell, Dry and Lynx Creeks.
- Amendment 8 – regarding the use of a borrow source located east of the Halfway River for the construction of reservoir clearing access roads.

### Water Licences and Leaves to Commence Construction/Diversion

BC Hydro holds Water Licences for the diversion and use of water, the storage of water, and for the temporary and permanent fish passage facilities. During the course of construction, we will apply for a series of Leaves to Commence Construction (LCCs) under the Water Licences in order to construct particular project works or components of project works. Construction-related activities under the LCCs are also independently reviewed by the Independent Engineer and the Independent Environmental Monitor as required by the Water Licences.

To date, BC Hydro has obtained LCCs for:

- Initial works
- Relocated surplus excavation material (RSEM) storage areas
- North and south bank excavations
- South bank stage 1 cofferdam
- Clearing of the eastern reservoir
- North bank cofferdams and diversion tunnel works
- Roller-compacted concrete (RCC) buttress foundation preparation and RCC placement
- Geotechnical investigations for the Hudson’s Hope shoreline protection
- Earthfill dam excavation, foundation preparation, fill placement and approach channel foundation preparation and placement
- Generating station civil works and spillways civil works
- Construction of the temporary fish passage facility
- Stage 2 cofferdams and river diversion, including debris boom facilities on the Peace and Moberly Rivers
- Water licences for temporary and permanent fish passage facilities
- Middle reservoir clearing
- Western reservoir clearing
- Hudson’s Hope berm construction

- Turbines and generators installation
- Balance of plant
- Hydromechanical works and gantry cranes
- Right bank foundation enhancements

BC Hydro also obtained a Leave to Commence Diversion (LCD) in June 2020, covering placement of the rockfill berm into the Peace River, diversion of water through the diversion tunnels, and construction of the stage 2 cofferdams. A separate LCD was also issued in August 2020, authorizing the commissioning of the temporary fish passage facility.

### Notice of completed activities

The following work, described in previous notifications, is complete or is anticipated to be complete by the date of issuance of this letter:

- Improvements to public roads in the vicinity of the dam site area
- Worker accommodation lodge
- Site C public viewpoint
- Fish habitat enhancements downstream of the dam site
- 50 affordable housing units in Fort St. John
- River diversion
- Site C substation
- The first of two transmission lines connecting Site C to Peace Canyon, and Peace Canyon switchgear upgrades
- Temporary fish passage facility
- Placement of 1.7 million cubic metres of roller-compacted concrete in the powerhouse, spillways, and dam and core buttresses.

### What to expect

During this time period, the following can be expected:

- [Permanent navigational restrictions](#): Boaters no longer have access to the Moberly River and the Peace River, near the dam site, now that construction is underway on the earthfill dam. Public safety signs and beacons have been installed on both banks of the Peace River, and on both sides of the dam site, to mark the active construction area.
- There will be project-related traffic on public roads leading to the dam site, transmission line corridor, reservoir and Highway 29, as we continue to haul materials, equipment, rock, and timber. This will include increased industrial traffic on resource roads and public roads from Chetwynd leading to the site on the south bank.
- Day, night and weekend shifts are anticipated for the duration of the project.
- Traffic control will be intermittently in place for construction and investigation activities along Highway 29. This may cause minor traffic delays. Visit [drivebc.ca](http://drivebc.ca) for the latest traffic updates.
- Noise will occur near the construction areas.
- Noise and vibration will result from works in the quarries. Hauling may occur at night.

- There will be construction occurring around the Peace River at the dam site.
- There may be smoke and lower visibility in areas where wood debris burning is occurring.
- We are monitoring air quality in the Site C project area. This data is being added to the Ministry of Environment's [B.C. Air Quality Monitoring Data](#). The Ministry uses this data to report on air quality trends. In the event of poor air quality, the Ministry will release air quality advisories through a notification list. This notification list currently includes the regional media, various public and private sector offices, as well as members of the public. If you are interested in being part of this notification list, please email [sitec@bchydro.com](mailto:sitec@bchydro.com).

### Learn more

BC Hydro is committed to providing you with information about Site C construction activities and has established several ways that you can learn more about the project. You can view our latest drone video [here](#).

We would be happy to come to your community to discuss the upcoming work in more detail, report on results of field studies and implementation of mitigation plans, and discuss how best to communicate with your community.

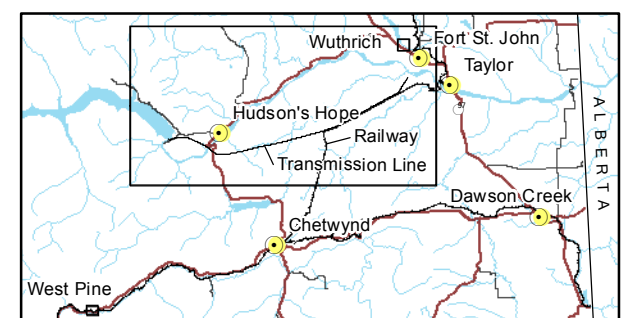
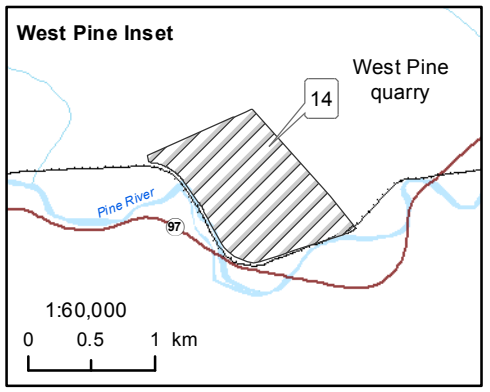
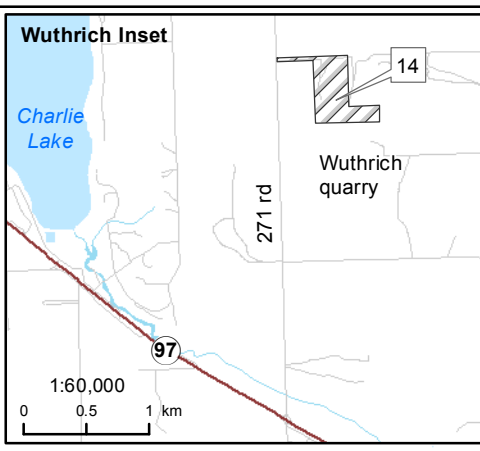
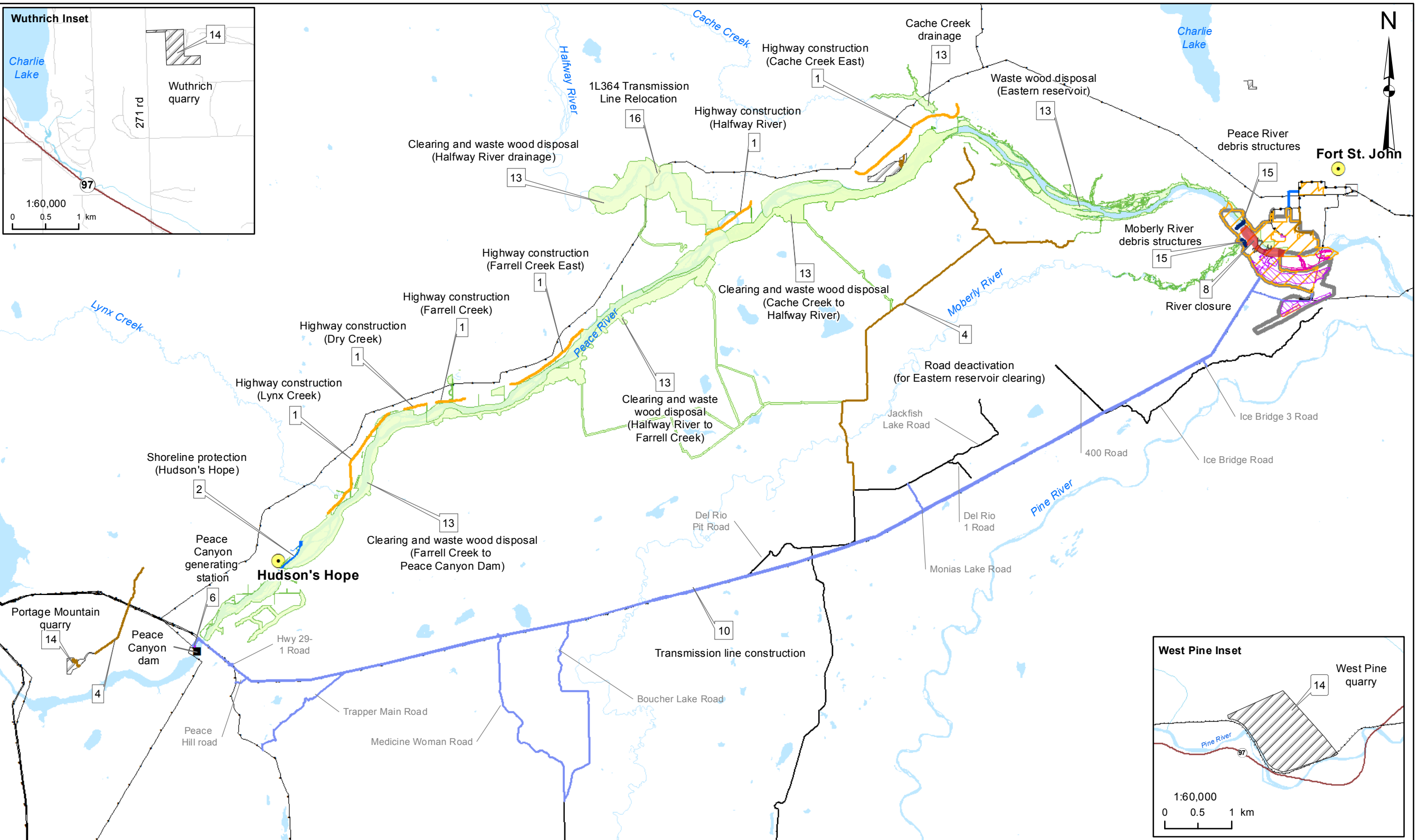
Please do not hesitate to contact me should you wish to arrange a meeting or have any questions about any information described in this letter.

Kindest regards,

A handwritten signature in blue ink that reads "Ken McKenzie". The signature is written in a cursive style and is enclosed within a hand-drawn oval.

Ken McKenzie

Construction Activity	
1	Highway construction
2	Shoreline Protection
3	Work area (GSS contractor)
4	Road construction and upgrade
5	Main civil works Main civil works general work area
6	Peace Canyon generating station
7	Work area (T&G contractor)
8	River closure
9	Habitat enhancement work (Survey and work area)
10	Transmission line construction, clearing and wood waste disposal
11	Conveyor corridor
12	Wildlife habitat structures, locations to be determined
13	Clearing and wood waste disposal
14	Wuthrich, West Pine, Portage Mountain quarries and Peace View borrow area
15	Debris structures
16	1L364 Transmission Line Relocation



Map Notes:  
 1. Datum: NAD83  
 2. Projection: UTM Zone 10N  
 3. Base Data: Province of B.C.

The construction activities presented in this map are indicative only and may change as a result of procurement and project planning advancements.

1:250,000 0 10 km

**BC Hydro**

**Construction Activities  
October - December 2021**

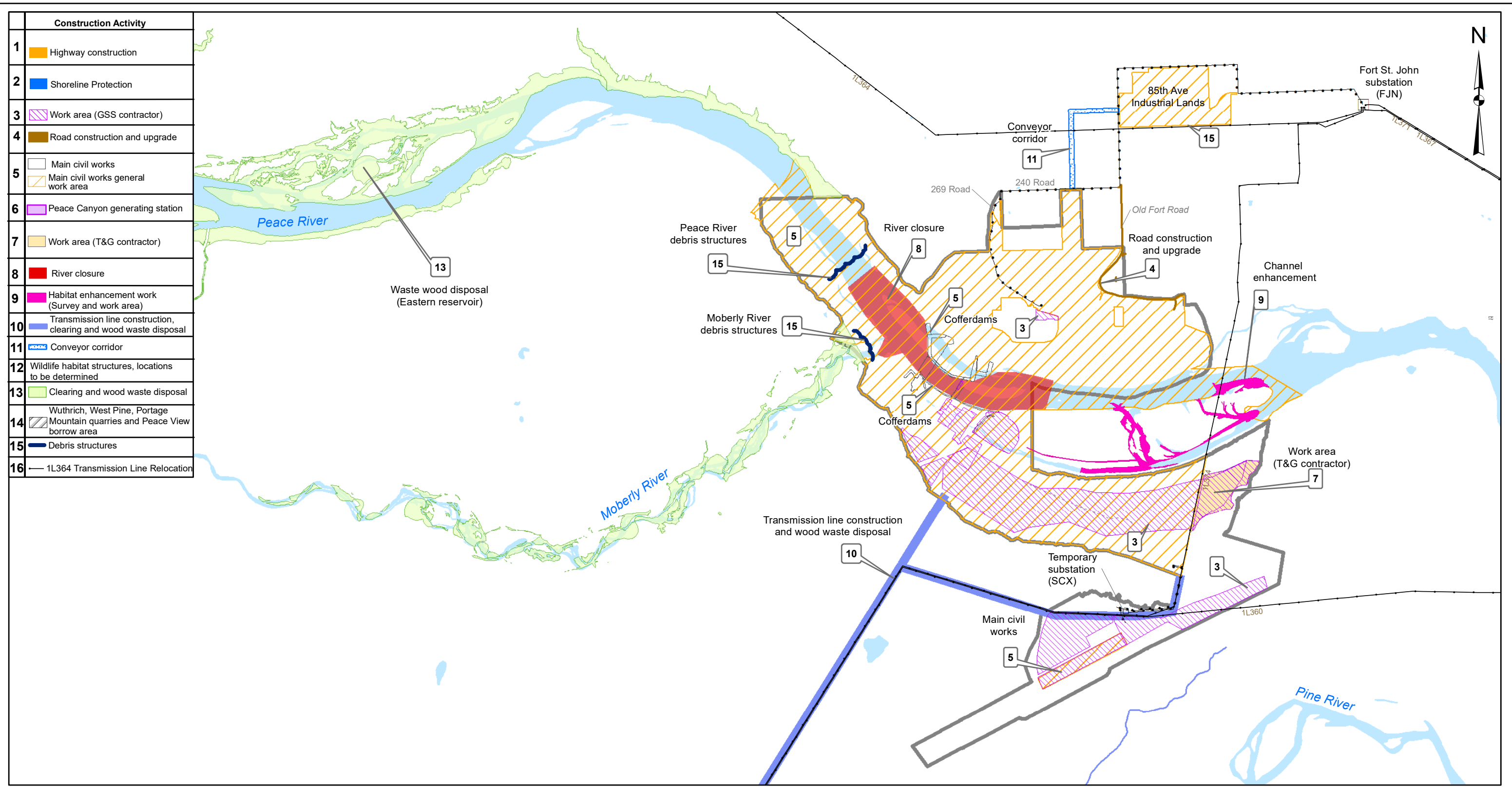
Date	Nov. 8, 2021	DWG NO	1016-N11-01202-1	R 1
------	--------------	--------	------------------	-----

Path: X:\AcGIS\Projects\First\_National\Construction\_Activities\_1016\_N11-01202-1.mxd

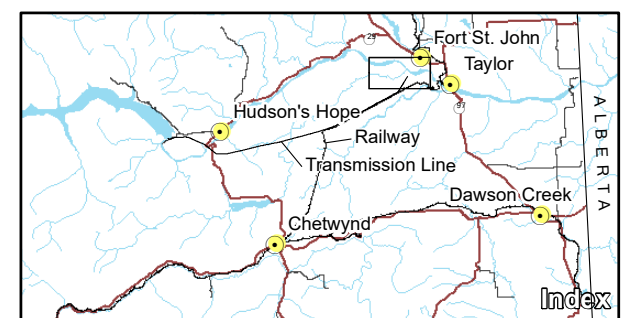
© BC Hydro 2021 - all rights reserved. This map is for information purposes only and accuracy is not guaranteed.

Construction of the Site C Clean Energy Project is subject to required regulatory and permitting approvals.





Construction Activity	
1	Highway construction
2	Shoreline Protection
3	Work area (GSS contractor)
4	Road construction and upgrade
5	Main civil works Main civil works general work area
6	Peace Canyon generating station
7	Work area (T&G contractor)
8	River closure
9	Habitat enhancement work (Survey and work area)
10	Transmission line construction, clearing and wood waste disposal
11	Conveyor corridor
12	Wildlife habitat structures, locations to be determined
13	Clearing and wood waste disposal
14	Wuthrich, West Pine, Portage Mountain quarries and Peace View borrow area
15	Debris structures
16	1L364 Transmission Line Relocation



Map Notes:  
 1. Datum: NAD83  
 2. Projection: UTM Zone 10N  
 3. Base Data: Province of B.C.

The construction activities presented in this map are indicative only and may change as a result of procurement and project planning advancements.

1:50,000 0 2 km

**BC Hydro**

**Construction Activities  
October - December 2021**

Date	Aug. 9, 2021	DWG NO	1016-N11-01202-2	R 0
------	--------------	--------	------------------	-----

Construction of the Site C Clean Energy Project is subject to required regulatory and permitting approvals.

Path: X:\ArcGISProjects\First Nations\Construction\_Activities\_1016\_N11-01202-2.mxd

© BC Hydro 2021 - all rights reserved. This map is for information purposes only and accuracy is not guaranteed.