

Darren Kahl  
Executive Vice President  
Site C Clean Energy Project  
P.O. Box 49260  
Vancouver, B.C. V7X 1V5

June 1, 2024

**Re: Notice of Site C Construction Activities: July to September 2024**

As part of our ongoing commitment to engaging with Indigenous Nations, we consistently share updates about upcoming work at Site C. This letter outlines construction work taking place from July 1 to September 30, 2024. [You can also read this letter online.](#)

Work progresses as scheduled for reservoir filling, starting in late summer 2024. To minimize wildlife impacts, filling will avoid peak bird nesting and black bear hibernation seasons. The reservoir will take about four months to reach varying depths: 52m near the dam, 36m at Halfway River, and 18m at Hudson's Hope. Water from the Williston Reservoir will fill the Site C reservoir, unaffected by drought or below-average snowpack.

The project remains on track for first power in 2024 and all six generating units by the end of 2025. Our focus for the upcoming period includes stringing transmission lines, constructing and commissioning intake and spillway gates, and filling the reservoir, among other work outlined below.

**Construction activities: July to September 2024**

- Progression of earthworks at the dam site.
- Construction of a drainage channel on the left bank of the river.
- Construction and commissioning of the spillway and intake gates.
- Construction and installation of the penstock flexible couplings for Units 1 to 6.
- Construction of the turbines and generators equipment.
- Transmission line stringing between the substation and the powerhouse.
- Construction of the balance of plant (mechanical, electrical, architectural scopes).
- Construction of the permanent fishway facility.
- Hauling of riprap from West Pine Quarry to site via train.
- Construction of Hudson's Hope recreational site at DA Thomas Road.
- Reclamation at Portage Mountain Quarry.
- Paving of Highway 29 at the Halfway River boat launch intersection.
- Construction of turnarounds at Farrell Creek Road and Upper Cache Road.
- Final decommissioning of the [conveyor belt system.](#)

For all activities described in this letter, the [necessary approvals](#) will have been obtained before work begins. Geotechnical site investigations, air quality monitoring, heritage and other field studies are ongoing. We'll continue to provide [annual field study notices](#) of these activities.

For the safety of the public and workers, please use caution when hunting, shooting, or setting traps in Site C project areas.

*The following information outlines work taking place in different areas of the project.*

## Dam site

- **Access roads:** Crews will continue to maintain dam site access roads and existing south bank resource roads, including petroleum development roads.
- **Diversion headpond:**
  - The Peace River was diverted in October 2020. During the river diversion phase, water accumulates behind the upstream cofferdam in what is called a headpond. The headpond begins at the dam site and could extend as far back as 15 kilometres – or approximately up to Cache Creek.
  - This means water levels could rapidly rise in areas upstream of the dam site.
- **Reservoir filling:**
  - In late summer 2024, reservoir filling will begin by closing Diversion Tunnel 1 and removing its headworks.
  - About one week after the reservoir filling starts and the water level reaches 440 metres, Diversion Tunnel 2 will be closed, and its headworks will be removed.
  - After closure of Diversion Tunnel 2, the necessary downstream minimum flow of 390 cubic metres per second will be maintained through the approach channel using a combination of spillway operating gates and low-levels outlets.
  - During the early phase of reservoir filling, which continues through September 30, 2024, the water levels upstream of the dam will rise by 0.5 to 3 metres per day. By the end of this period, the water depth will reach approximately 44 metres near the dam, 28 metres at Halfway River, and 10 metres at Hudson's Hope, with the reservoir extending upstream beyond Hudson's Hope.
- **Main civil works and infrastructure:**
  - Excavation, hauling and stockpiling of aggregate within the dam site.
  - Construction in the left bank drainage adit and right bank drainage tunnel.
  - Rail and possible truck delivery of riprap to site and placement on the dam, tailrace, and approach channel.
  - Permanent dam site road construction.
  - Construction of a drainage channel on the left bank of the river.
  - Haul road realignments on the dam site.
  - Reclamation and recontouring of completed areas of the dam site.
- **Permanent fishway facility:** Construction of the permanent fishway will continue.
- **Generating station, spillways, and right bank foundation enhancements:**
  - Construction and commissioning of the spillway and intake gates.

- Installing the penstock flexible coupling for Units 1 to 6.
- **Turbines and generators:**
  - Installation of the turbine and generator components in the powerhouse will continue.
  - Assembly of generator components will continue inside the powerhouse main service bay and at the contractor's on-site shop.
- **Balance of plant:**
  - Electrical and mechanical equipment components will continue to be safely delivered to and installed at site.
  - Installation of electrical and mechanical equipment inside the powerhouse, intakes and spillways will continue.
  - Construction of control rooms and office space within the powerhouse will continue.
- **Transmission lines:** Construction of three 500 kilovolt transmission lines between the Site C substation and the Site C generating station will continue, including stringing of wires.

### Public roads and highways

- **Highway 29:** Final paving of the intersection of Highway 29 and the future Halfway River boat launch will take place in the spring. The installation of rumble strips will take place in the spring/summer.
- **Turnarounds:** Construction of turnarounds may take place at Farrell Creek Road and Upper Cache Road.
- **DA Thomas Road and Hudson's Hope Recreational Site:** Construction of the Hudson's Hope recreational site and upgrades to DA Thomas Road will continue.

### Peace River and reservoir area

- **Boat launches:** The existing boat launch at Halfway River is open for the boating season as of spring 2024. It will remain open until August 12, after which it will permanently close in preparation for reservoir filling in late August. Please note that the DA Thomas and Lynx Creek boat launches were permanently closed in 2023. New boat launches are being built and will open once the reservoir is deemed safe, at least one year after filling is complete.
- **Reservoir area public access:** Starting in late August 2024, during reservoir filling and for at least one year afterward, new water and shoreline hazards will be present. There will be no access to the reservoir until it is deemed safe, and BC Hydro boat launches will remain closed during this period.
- **River closure:** A short section of the Peace River upstream of the Peace River Construction Bridge is permanently closed at the dam site.
- **In-river debris management systems:** Temporary debris management structures on the Moberly River and the Peace River will be replaced with a permanent public safety debris boom at the approach channel for regular dam operations and a shear boom in the forebay during reservoir filling in September 2024.

- **Safety signage:** Reservoir area safety signs will be placed around the reservoir area in preparation for the start of reservoir filling.
- **Archaeology:** On-call archaeological studies, as required, anywhere on the project.
- **Removals:** Environmental clean-up of found contamination will take place. Acquired properties and structures located within impact lines will be removed or relocated. Construction signage will be removed from the waterway. Fences on acquired properties will be removed.
- **Surveys and site investigations:** Will take place within the footprint of the reservoir area.

### Quarries

- **West Pine Quarry:** Production of riprap, including blasting will continue.
- **Portage Mountain Quarry:** Reclamation work will continue.

### Environmental Assessment Certificate

Environmental Assessment Certificate #E14-02 for the project consists of Schedule A, the project description, and Schedule B, the conditions under which the project must be built and operated. If we wish to make a change to either Schedule A or Schedule B of the Environmental Assessment Certificate, we are required to submit a written request to the Environmental Assessment Office (EAO). The EAO consults with regulatory agencies, Indigenous Nations and/or the public on the request and issues a written decision on the request.

To date, we have requested and been granted 11 amendments to the Environmental Assessment Certificate. The most recent Amendment allows BC Hydro to retain temporary structures permanently in the reservoir and become submerged if retaining the structures will not have an adverse effect on fish or fish habitat.

BC Hydro is complying with all conditions of the Environmental Assessment Certificate and its amendments.

### Water Licences and Leaves to Commence Construction/Diversion

We hold Water Licences for the diversion and use of water, the storage of water, and for the temporary and permanent fish passage facilities. During construction, we will apply for a series of Leaves to Commence Construction under the Water Licences to construct project works or components of project works. Construction-related activities under the Leaves to Commence Construction are also independently reviewed by the Independent Engineer and the Independent Environmental Monitor as required by the Water Licences.

To date, we have obtained Leaves to Commence Construction authorizing construction works, including but not limited to excavations and construction of cofferdams; generating station civil works and spillway civil works; construction of the temporary and permanent fish passage facilities, reservoir clearing and boat launch construction, Hudson's Hope berm construction, turbines and generators installation, balance of plant works, and right bank foundation enhancements.

In May 2023, the Water Sustainability Act Engineer issued a Leave to Commence Diversion under the Water Licences. This Leave authorizes tunnel conversion, reservoir filling, wet testing, and commissioning of the generating units and hydromechanical gates and decommissioning of the diversion tunnels. In spring 2024, we submitted our request for a Leave to Commence Operation of the generating units.

### Notice of completed activities

View all previously completed work in our [construction bulletins and notification letters](#).

### What to expect during construction

During this period, the following can be expected:

- **The Peace River remains closed** both immediately upstream and downstream of the dam site; caution should be exercised at the shoreline. Public safety signs and beacons have been installed on both banks of the Peace River, and on both sides of the dam site, to mark the active construction area.

**Hazards on the water:** Starting in late August 2024, and continuing through the next year, there will be new hazards on the water and along the shoreline during reservoir filling. Because of this, access to the reservoir is discouraged, and BC Hydro boat launches will be closed during this time.

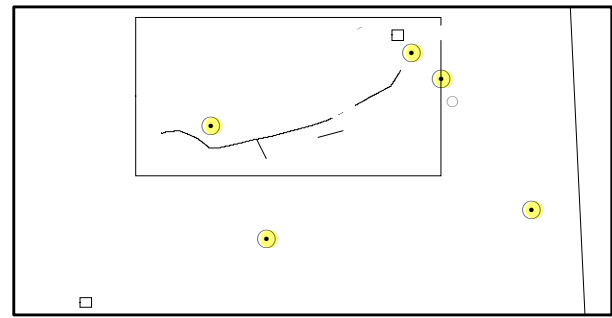
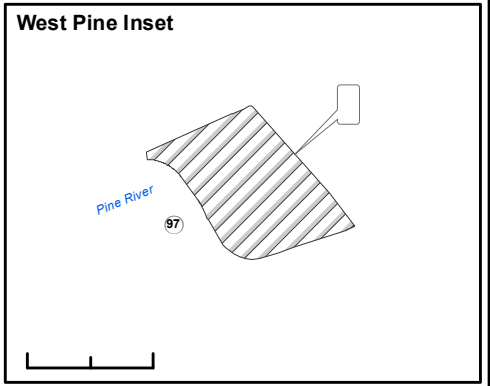
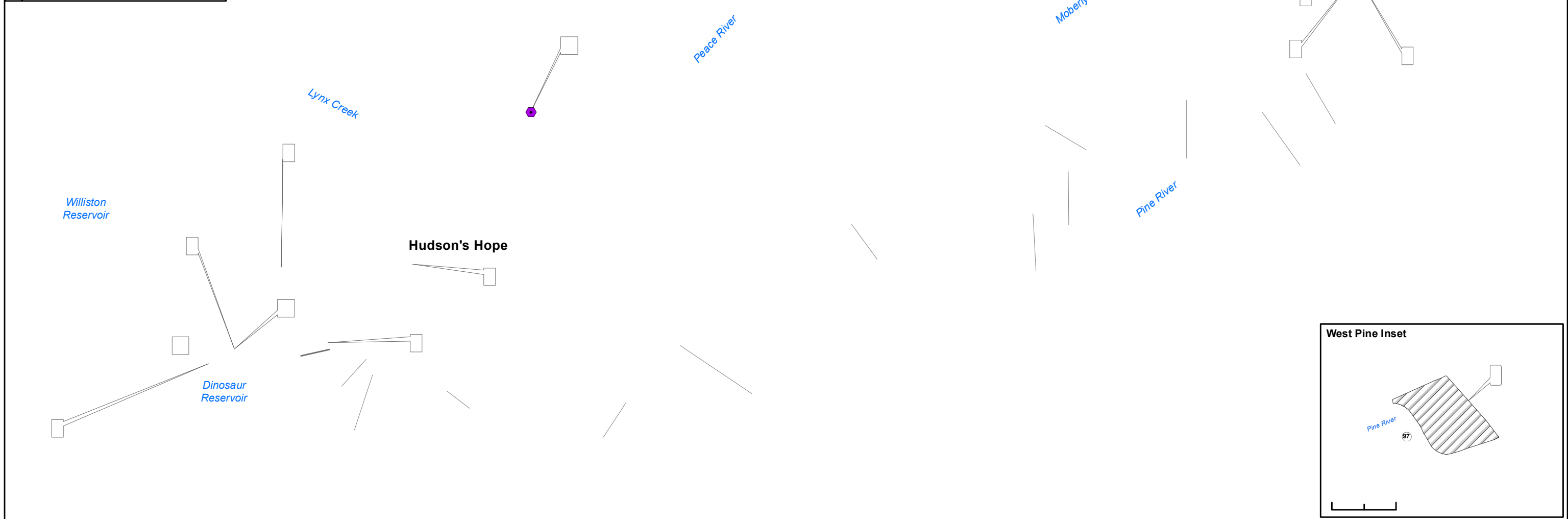
- **There will be project-related traffic** on public roads leading to the dam site, transmission line corridor, reservoir, and Highway 29.
- **We're monitoring air quality in the Site C project area.** This data is being added to the Ministry of Environment's [B.C. Air Quality Monitoring Data](#). The Ministry uses this data to report on air quality trends. In the event of poor air quality, the Ministry will release air quality advisories through a notification list. If you're interested in being part of this notification list, please email [sitec@bchydro.com](mailto:sitec@bchydro.com).

Kindest regards,



Darren Kahl  
Executive Vice President, Site C | Clean Energy Project

Construction Activity	
1	
2	
3	
4	
5	
6	
7	
8	
9	
10	
11	



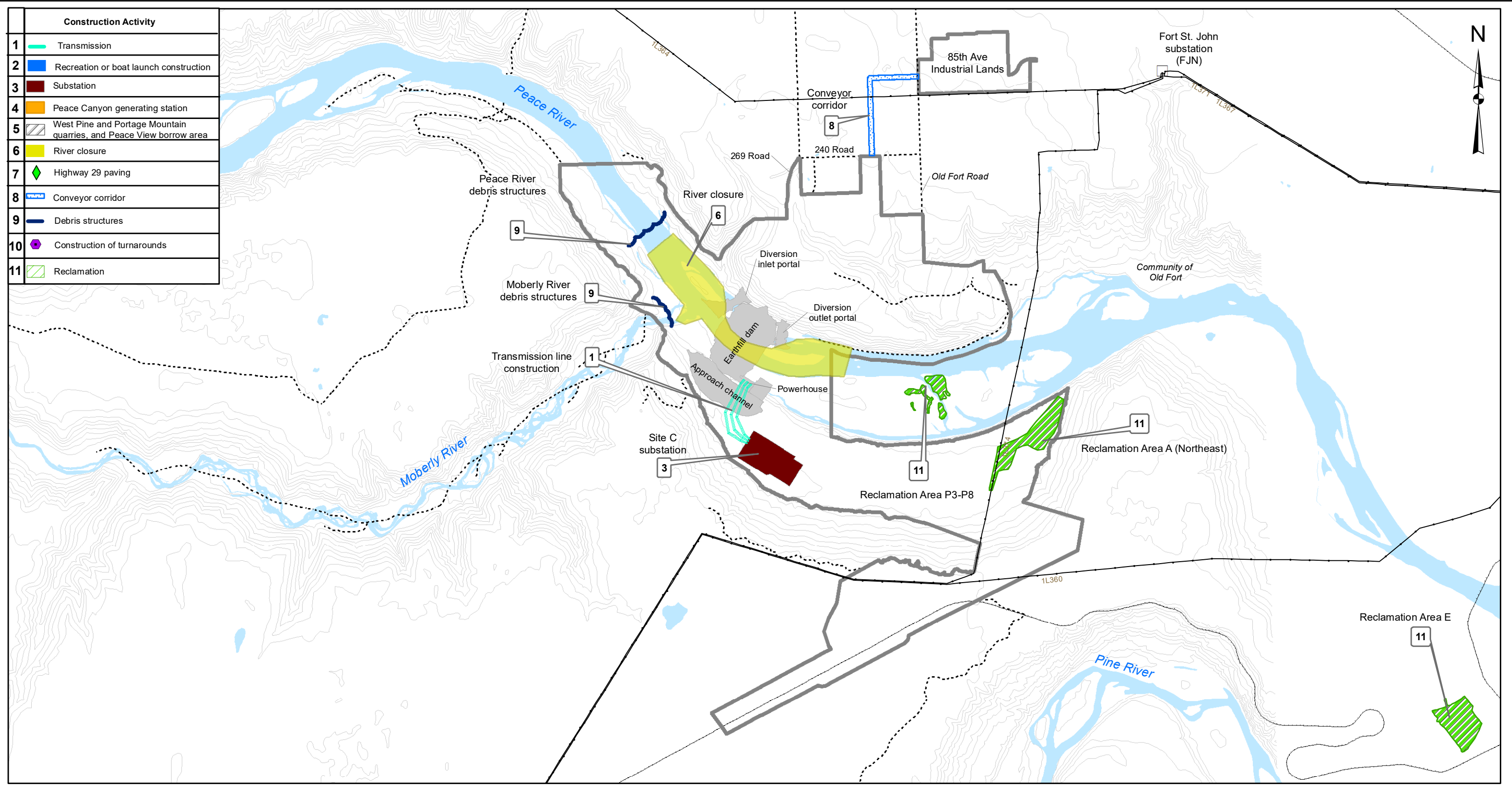
**Legend**



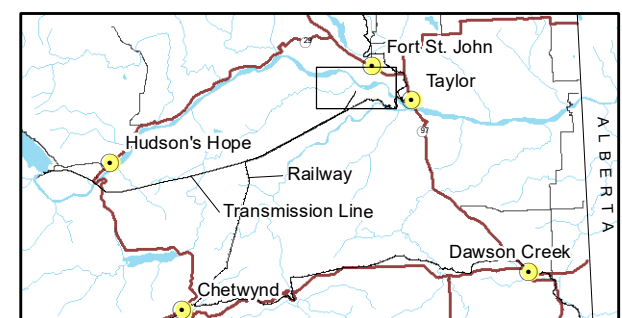
**Construction Activities**  
July 1<sup>st</sup> to September 30<sup>th</sup>, 2024

--	--	--	--	--





Construction Activity	
1	Transmission
2	Recreation or boat launch construction
3	Substation
4	Peace Canyon generating station
5	West Pine and Portage Mountain quarries, and Peace View borrow area
6	River closure
7	Highway 29 paving
8	Conveyor corridor
9	Debris structures
10	Construction of turnarounds
11	Reclamation



Map Notes:  
 1. Datum: NAD83  
 2. Projection: UTM Zone 10N  
 3. Base Data: Province of B.C.

Legend	
	Dam Site Area
	Railway
	Existing Road
	Existing Transmission Lines

The construction activities presented in this map are indicative only and may change as a result of procurement and project planning advancements.

1:50,000 0 2 km

**BC Hydro**

**Construction Activities**  
 July 1<sup>st</sup> to September 30<sup>st</sup>, 2024  
 (Dam Site Area)

Date	May. 14, 2024	DWG NO	1016-N11-01810-2	R 4
------	---------------	--------	------------------	-----

Path: X:\ArcGIS\Projects\First\_National\Construction\_Activities\_1016\_N11-01810-2.mxd