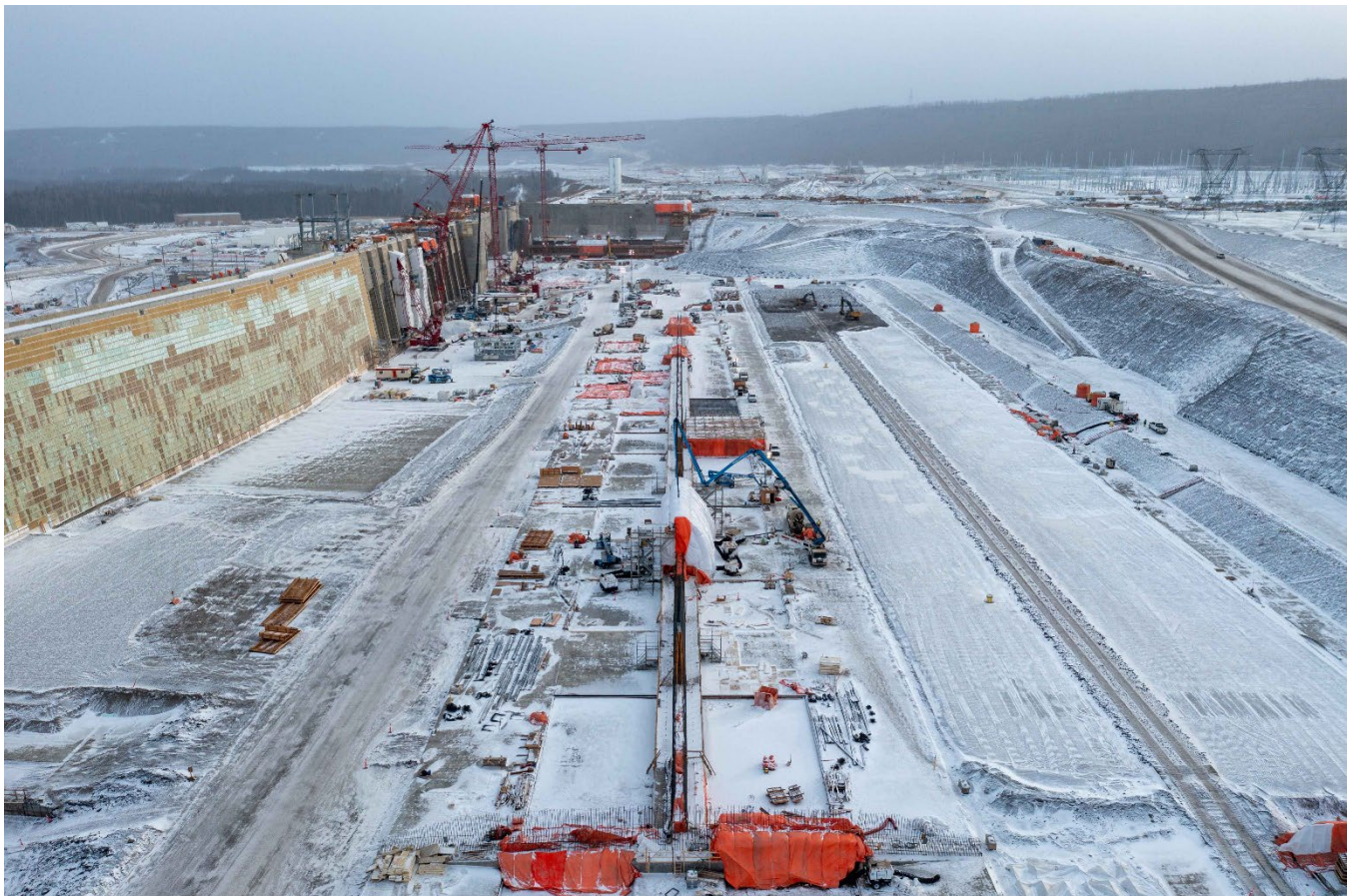


Site C Construction Schedule: January 14 - 27, 2023



The approach channel, which will direct water from the Site C reservoir to the dam intakes. For more pictures, see [our gallery](#).

News and highlights

- Once the Site C reservoir is filled, it will allow us to put the generating station, spillways, turbines and generators into operation. [Watch here](#) to learn more about how the reservoir will be filled.
- Our latest jobs report shows there were 5,238 people working on the Site C project in November, including 558 women. [Read more](#).
- The Hudson's Hope berm and Portage Trail will be [closed to the public](#) as the District of Hudson's Hope's contractor installs temporary water pumps and a supply line.
- We are restarting work to finish a spawning shoal for rainbow trout and mountain whitefish near Peace Canyon Dam, known locally as the "Fingers." Construction is expected to finish by the end of January. [Read more](#).

- Crews are starting to remove new vegetation that has regrown into previously cleared areas in the reservoir, between the dam site and Cache Creek. [Read more.](#)

Dam site

- Excavation of the approach channel, drilling and grouting, and placement of concrete and rip rap continues.
- Installation of steel piles in the tailrace excavation continue as part of the [right bank foundation enhancements](#). The piles extend the foundation further into the bedrock.
- Construction of the powerhouse, intakes, and spillway continues. This includes concrete placements at the powerhouse, intakes, penstocks, and spillways.
- Powerhouse Balance of Plant: Installation of cable tray and other electrical components has started on the generator floor. The mechanical contractor has started applying coatings in the draft tube cone access area.
- Installation of the spillway gates and intake gates are underway.
- Installation of a headwork gantry crane continues on top of the intakes.
- Turbine and generator components and materials continue to be delivered to site, and some to storage, for future installation. To date, five of six turbine runners have arrived at site. The remaining runner will likely be delivered this winter when road conditions allow.
- In the powerhouse, installation and assembly of turbine components continues and generator rotors are being assembled in the main service bay.
- Hauling activities continue from aggregate sources on the south bank.
- Construction of the dam, including placement of aggregates and riprap, and drilling and grouting of the abutments may continue, weather dependent.

Highway 29

- Crews have demobilized for the season at Cache Creek/Bear Flat, Halfway River, Farrell Creek, and Lynx Creek.
- Our contractor at Cache Creek may be on site to complete minor outstanding work on the bridge.
- [Visit our website](#) for Highway 29 schedules, maps, and construction updates.

Decommissioning

- Crews are excavating a culvert at Dry Creek.
- The old highway at Lynx Creek is being decommissioned.

Fish habitat construction near Old Fort

- Restoration of the area which was under the north aggregate stockpile is in progress.

Reservoir area

- Work is restarting to finish a spawning shoal for rainbow trout and mountain whitefish near Peace Canyon Dam, known locally as the “Fingers.” Construction is expected to finish by the end of January. [Read more.](#)
- Crews are starting to remove new vegetation that has regrown into previously cleared areas in the reservoir, between the dam site and Cache Creek.
- Clearing activities are happening along the north and south banks of the Peace River, including the Watson Slough area. Activities include vegetation clearing, road construction and maintenance, log hauling and helicopter work. Learn more about [reservoir clearing](#).
- Burning of wood debris may take place along the north and south banks of the Peace River, including the surroundings of Hudson's Hope pending favourable conditions.

CONSTRUCTION BULLETIN

- Removal or demolition of infrastructure within the future reservoir on BC Hydro-owned land will continue near Cache Creek and Lynx Creek. Equipment will mobilize to site and work may be visible from Highway 29.
- Field investigations may take place.

Regulatory

- On November 16, 2022, we submitted an application for Approval (Registry No. 6775) to Transport Canada under the *Canadian Navigable Waters Act* for the future Hudson's Hope Shoreline Boat Launch.
 - Comments on this application can be submitted via the [Common Project Search](#) or by emailing NPPAC-PPNPAC@tc.gc.ca.
- On December 22, 2022, we submitted an application for Approval (Registry No. 6961) to Transport Canada under the *Canadian Navigable Waters Act* for activities related to downstream contouring for fish habitat enhancement work to construct a temporary access bridge crossing at sites 107R and 108R.
 - Activities are located on the south bank of the Peace River, downstream of the Site C dam site.
 - This work is scheduled to begin in the spring of 2023.
 - Comments on this application can be submitted via the [Common Project Search](#) or by emailing NPPAC-PPNPAC@tc.gc.ca.

What to expect

Work will take place during the day, night, and on the weekend, until the project is completed. During this time, residents can expect:

Boating restrictions

- The Peace River near the dam site is permanently closed to boater traffic. Being on or near the water around the Site C construction area presents a serious safety risk to river users. Boaters are urged to stay away from the area and observe and obey all signage and beacons. [Read more.](#)

Traffic delays

- **Old Fort Road:** Near Gate B to the dam site, drivers may encounter loose gravel and increased commercial traffic. Due to equipment delivery, there may be [occasional short road closures](#) along Old Fort Road.
- **Highway 29:** Construction-related equipment will travel along Highway 29 and Highway 97. Drivers on the road are reminded to travel at a safe distance behind construction vehicles particularly near the Highway 29 road realignment sections. Learn more at drivebc.ca.
- **Other areas:** Trucks with heavy loads will be accessing the dam site and other project areas, using public and resource roads.

Equipment, noise, vibration, and reduced visibility

- Helicopters and commercial drones may be used to support investigative and construction works.
- Some noise and vibration may take place near the dam site and work areas, including the quarries.
- There may be smoke and lower visibility in areas where wood debris burning is happening.

[Sign up for construction bulletins](#) and follow us [@sitecproject](#) on Twitter to receive updates.