

Darren Kahl
Executive Vice President
Site C Clean Energy Project
P.O. Box 49260
Vancouver, B.C. V7X 1V5

December 15, 2022

Re: Notice of Site C Construction Activities: January – April 2023

As part of our engagement with Indigenous Nations, we provide regular updates and information on construction activities. This letter describes work planned from January 1 to April 30, 2023.

For the upcoming period, construction at Site C will focus on:

- Progression of earthworks at the dam site.
- Construction of the powerhouse and spillways.
- Construction of the spillway and intake gates and cranes.
- Continue construction of the generators and turbines.
- Continue with the balance of plant (mechanical, electrical, architectural scopes).
- Installation of steel piles as part of the right bank foundation enhancement work.
- Construction of the approach channel.
- Construction of fish habitat, including vegetation and tree clearing.
- Construction of the permanent fishway facility.
- Highway 29 decommissioning at Cache Creek, Halfway River, Farrell Creek East, Farrell Creek, Dry Creek and Lynx Creek.
- On-call archaeological studies, as required.
- Excavation, hauling and road maintenance activities to access aggregate sources (Howe Pit, Area E and Area 24).
- Vegetation clearing for the construction of access roads on the south bank of the Peace River, east of the dam site, to support the creation of fish habitat, including some in-river excavation.
- Vegetation clearing of the reservoir area.

For all activities described in this letter, the [necessary approvals](#) will have been obtained before work begins. Geotechnical site investigations, air quality monitoring, heritage and other field studies are ongoing. We'll continue to provide [annual field study notices](#) of these activities.

For the safety of the public and workers, please use caution when hunting, shooting, or setting traps in Site C project areas.

Dam site

- **Access roads:**
 - Crews will continue to maintain dam site access roads and existing south bank resource roads, including petroleum development roads.
- **Headpond:**
 - The Peace River was diverted in September 2020. During the river diversion phase, water accumulates behind the upstream cofferdam in what is called a headpond. The headpond begins at the dam site and could extend as far back as 15 kilometres – or approximately up to Cache Creek.
 - This means water levels could rapidly rise in areas upstream of the dam site.
 - The Peace River remains closed both upstream and downstream of the dam site; caution should be exercised at the shoreline.
 - The debris boom on the Peace River will be reinstalled in the spring. The debris management structures on the Moberly River capture floating debris and prevent it from impacting construction and diversion tunnel operations.
- **Main Civil Works:** Construction activities include:
 - Excavation of the approach channel.
 - Relocation of excavated material to disposal areas on the north and south banks of the river at the dam site area.
 - Excavation and hauling of aggregate from area E.
 - Excavation, hauling and stockpiling of aggregate within the dam site.
 - Construction of the left bank and right bank drainage tunnels.
 - Grouting of the main dam grout curtain and consolidation grouting.
 - Earthfill dam placements and other civil works.
 - Rail delivery of riprap to site and placement on the upstream side of the main dam.
 - Haul road realignments.
- **Generating Station and Spillways & Right Bank Foundation Enhancements:**
 - Installation of steel piles as part of the right bank foundation enhancements. The piles extend the foundation further into the bedrock.
 - Grouting in the approach channel and foundation preparation, mud slabs and backfill.
 - Concrete works in the approach channel.
 - Concrete will continue to be placed in powerhouse intake areas.
 - Construction of the spillway stilling basin will continue.
 - Transition block and spillway headworks construction will continue.
- **Turbines and Generators:**
 - The first turbine runner was installed into the powerhouse.

- Turbine and generator components will continue to be delivered safely to site. Installation of turbine and generator components in the powerhouse will continue.
- Assembly of generator components have begun inside the powerhouse main service bay.
- **Balance of Plant:**
 - Electrical and mechanical equipment components will continue to be delivered safely to site.
 - Installation of electrical and mechanical equipment inside the powerhouse will continue.
 - Construction of control rooms and office space within the powerhouse is continuing.
- **Transmission Lines:**
 - Construction of three 500 kilovolt transmission lines between the Site C substation and the Site C generating station will continue in spring 2023.

Public roads and highways

- **Highway 29**
 - **Cache Creek:** Bridge and highway construction will be on seasonal shutdown until Spring 2023, when paving will be completed. Work on site over the January to April period will consist of the removal of temporary bridges and site reclamation.
 - **Farrell Creek:** Bridge construction is complete.
 - **Lynx Creek:** Construction of the highway realignment will be on seasonal shutdown until Spring 2023, when paving will be completed. Work on site over the January to April period will consist of Lynx Creek bridge removal and placement of riprap.
 - **Decommissioning:** Decommissioning of existing highway alignments at Cache Creek, Halfway River, Farrell Creek East, Farrell Creek, Dry Creek and Lynx Creek will occur. This will include the removal of the Lynx Creek and Cache Creek bridges.

Peace River/reservoir

- **River closure:** A short section of the Peace River is permanently closed at the dam site as construction is underway on the earthfill dam.
- **In-river debris management systems:** Debris management structures are in place on the Moberly River. The boom on the Peace River will be removed in October and be reinstalled in April 2023.
- **Fish habitat construction:** Access road maintenance and fish habitat construction work will occur near the Wilder Creek area.
- **Channel Contouring:** Channel contouring for the construction of fish habitat will occur, including some in-river excavation and hauling of aggregates to the dam site.
- **Archaeology:** On-call archaeological studies, as required, anywhere on the project.

- **Reservoir clearing:** Clearing activities continue and will include road construction, logging, hauling timber to local mills and waste wood burning.
- **Surveys and site investigations:** Will occur within the footprint of the reservoir area.

Hudson's Hope shoreline protection

- Construction of the Hudson's Hope shoreline protection berm is complete.

Boat launches at Lynx Creek and Halfway River

- Construction of the Halfway River boat launch will be on seasonal shutdown until Spring 2023. Construction of the Lynx Creek boat launch will continue.

Transmission works

- **Access road maintenance and Tower site stabilization:** Road maintenance on access roads will occur, to ensure environmental compliance along the transmission line. Work will occur at two transmission tower sites to stabilize embankments adjacent to the towers.

Production and transport of materials

- **85th Avenue Industrial Lands:** Till materials for the dam may continue to be quarried and stockpiled for transport.
- **Conveyor belt system:** The operation of the conveyor system will stop in mid fall and resume in the spring.
- **Howe Pit:** Materials will be excavated and used to develop a laydown area at Howe Pit.
- **Area E:** Materials will be excavated and hauled to the dam site.

Environmental Assessment Certificate

Environmental Assessment Certificate #E14-02 for the project consists of Schedule A, the project description, and Schedule B, the conditions under which the project must be built and operated. If we wish to make a change to either Schedule A or Schedule B of the Environmental Assessment Certificate, we are required to submit a written request to the Environmental Assessment Office, which then consults with regulatory agencies, Indigenous groups and/or the public on the request and issues a written decision.

To date, we have requested and been granted nine amendments to the Environmental Assessment Certificate. These are:

- Amendment 1 – regarding design changes to the generating station and spillways.
- Amendment 2 – regarding design changes to the Halfway River Bridge within the Halfway River Highway 29 realignment.
- Amendment 3 – regarding the use of West Pine Quarry, in addition to the already approved Portage Mountain Quarry, as a source of quarry and excavated material for the construction of the Highway 29 realignment, Hudson's Hope shoreline protection, and areas along the reservoir requiring protection during reservoir filling.
- Amendment 4 – regarding the selective use of mechanical clearing in riparian zones during reservoir clearing when it is unsafe to undertake manual clearing.
- Amendment 5 – regarding a change in the alignment of Highway 29 at Cache Creek.

- Amendment 6 – regarding the expansion of the worker accommodations camp within the dam site area.
- Amendment 7 – regarding changes to the designs of Highway 29 crossings at Farrell, Dry and Lynx Creeks.
- Amendment 8 – regarding the use of a borrow source located east of the Halfway River for the construction of reservoir clearing access roads.
- Amendment 9 – regarding the relocation of a boat launch from Cache Creek to a location east of Halfway River.

Water Licences and Leaves to Commence Construction/Diversion

We hold Water Licences for the diversion and use of water, the storage of water, and for the temporary and permanent fish passage facilities. During construction, we will apply for a series of Leaves to Commence Construction under the Water Licences to construct project works or components of project works. Construction-related activities under the Leaves to Commence Construction are also independently reviewed by the Independent Engineer and the Independent Environmental Monitor as required by the Water Licences.

To date, we have obtained Leaves to Commence Construction for:

- Initial works.
- Relocated surplus excavation material storage areas.
- North and south bank excavations.
- South bank stage 1 cofferdam.
- Clearing of the eastern reservoir.
- North bank cofferdams and diversion tunnel works.
- Roller-compacted concrete buttress foundation preparation and roller-compacted concrete placement.
- Geotechnical investigations for the Hudson's Hope shoreline protection.
- Earthfill dam excavation, foundation preparation, fill placement and approach channel foundation preparation and placement.
- Generating station civil works and spillways civil works.
- Construction of the temporary fish passage facility.
- Stage 2 cofferdams and river diversion, including debris boom facilities on the Peace and Moberly Rivers.
- Water licences for temporary and permanent fish passage facilities.
- Middle reservoir clearing.
- Western reservoir clearing.
- Hudson's Hope berm construction.
- Turbines and generators installation.
- Balance of plant.
- Hydromechanical works and gantry cranes.

- Right bank foundation enhancements.

We also obtained a Leave to Commence Diversion in June 2020, covering placement of the rockfill berm into the Peace River, diversion of water through the diversion tunnels, and construction of the stage 2 cofferdams. A separate Leave to Commence Diversion was also issued in August 2020, authorizing the commissioning of the temporary fish passage facility.

Notice of completed activities

The following work, described in previous notifications, is complete or is anticipated to be complete by the date of issuance of this letter:

- Improvements to public roads in the vicinity of the dam site area.
- Worker accommodation lodge.
- Site C public viewpoint.
- Fish habitat enhancements downstream of the dam site.
- 50 affordable housing units in Fort St. John.
- River diversion.
- Site C substation.
- Two transmission lines connecting Site C to Peace Canyon, and Peace Canyon switchgear upgrades.
- Temporary fish passage facility.
- Placement of 1.7 million cubic metres of roller-compacted concrete in the powerhouse, spillways, and dam and core buttresses.
- Concrete buttresses for the dam core.
- 2.6 km shoreline protection berm along Hudson's Hope.
- Installation and welding of penstock segments on all units.
- 1.4 km Dry Creek bridge (open).
- 3.0 km Farrell Creek east bridge (open).
- 8.5 km Lynx Creek bridge (open).

What to expect

During this period, the following can be expected:

- [Permanent navigation restrictions](#): Boaters no longer have access to the Moberly River and the Peace River, near the dam site now that construction is underway on the earthfill dam. Public safety signs and beacons have been installed on both banks of the Peace River, and on both sides of the dam site, to mark the active construction area.
- There will be project-related traffic on public roads leading to the dam site, transmission line corridor, reservoir, and Highway 29, as we continue to haul materials, equipment, rock, and timber. This will include increased industrial traffic on resource roads and public roads from Chetwynd leading to the site on the south bank.
- Day, night, and weekend shifts are anticipated for the duration of the project.

- Traffic control will be intermittently in place for construction and investigation activities along Highway 29. This may cause minor traffic delays. Visit drivebc.ca for the latest traffic updates.
- Noise will occur near construction areas.
- Noise and vibration will result from works in the quarries. Hauling may occur at night.
- There will be construction occurring around the Peace River at the dam site.
- There may be smoke and lower visibility in areas where wood debris burning is occurring.
- We are monitoring air quality in the Site C project area. This data is being added to the Ministry of Environment's [B.C. Air Quality Monitoring Data](#). The Ministry uses this data to report on air quality trends. In the event of poor air quality, the Ministry will release air quality advisories through a notification list. This notification list currently includes the regional media, various public and private sector offices, as well as members of the public. If you're interested in being part of this notification list, please email sitec@bchydro.com.

Learn more

We're committed to providing you with information about Site C construction activities and have established several ways that you can learn more about the project.

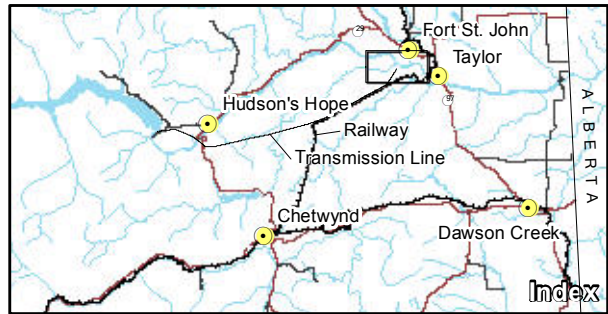
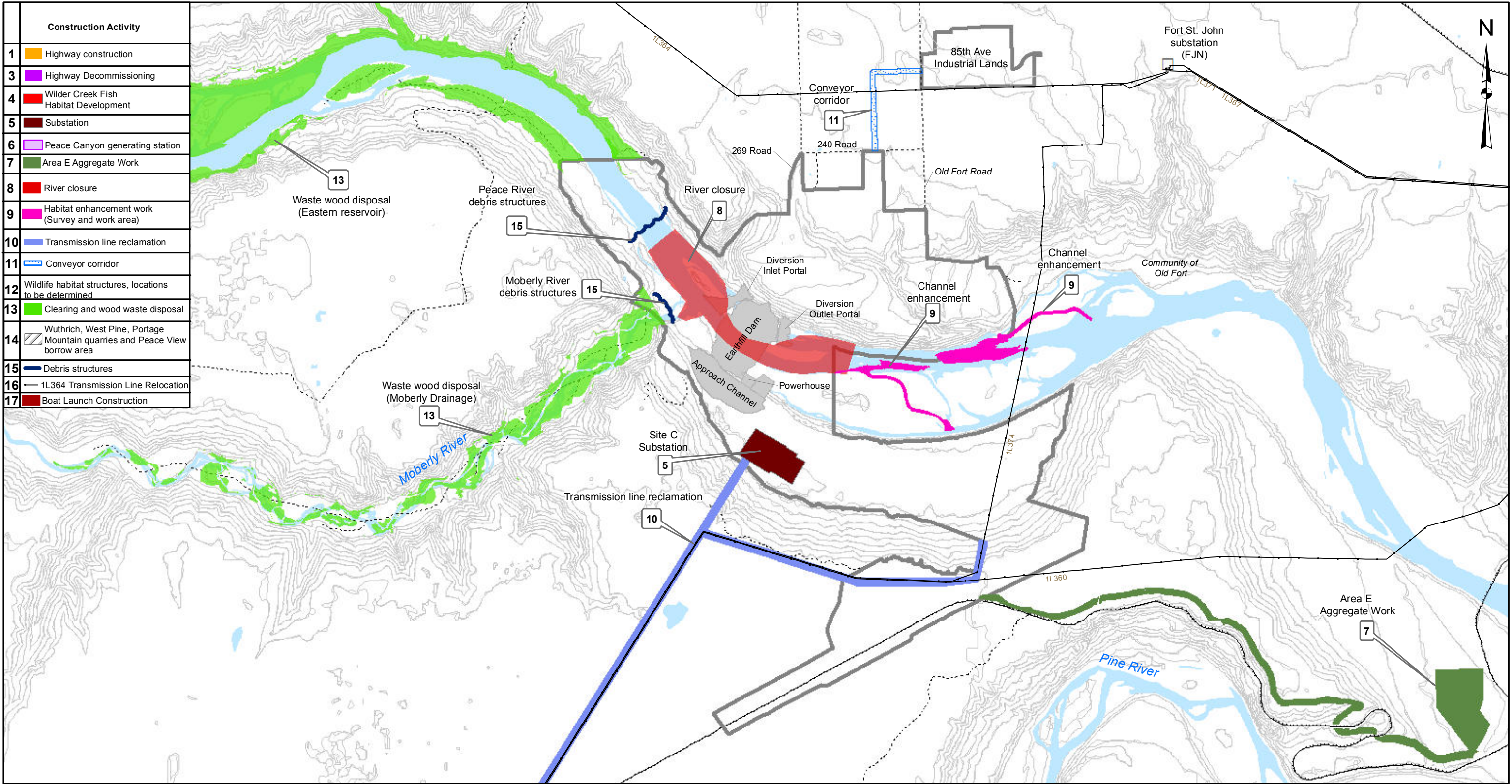
We would be happy to discuss the upcoming work in more detail, report on results of field studies and implementation of mitigation plans and discuss how best to communicate with your community.

Kindest regards,



Darren Kahl

	Construction Activity
1	Highway construction
3	Highway Decommissioning
4	Wilder Creek Fish Habitat Development
5	Substation
6	Peace Canyon generating station
7	Area E Aggregate Work
8	River closure
9	Habitat enhancement work (Survey and work area)
10	Transmission line reclamation
11	Conveyor corridor
12	Wildlife habitat structures, locations to be determined
13	Clearing and wood waste disposal
14	Wuthrich, West Pine, Portage Mountain quarries and Peace View borrow area
15	Debris structures
16	1L364 Transmission Line Relocation
17	Boat Launch Construction



Map Notes:
1. Datum: NAD83
2. Projection: UTM Zone 10N
3. Base Data: Province of B.C.

The construction activities presented in this map are indicative only and may change as a result of procurement and project planning advancements.

1:50,000

02 km

BC Hydro

Construction Activities
Jan 1st to Apr 30th 2023
(Dam Site Area)

Date	Nov. 24, 2022	DWG NO	1016-N11-01643-2	R 0
------	---------------	--------	------------------	-----

Construction of the Site C Clean Energy Project is subject to required regulatory and permitting approvals.