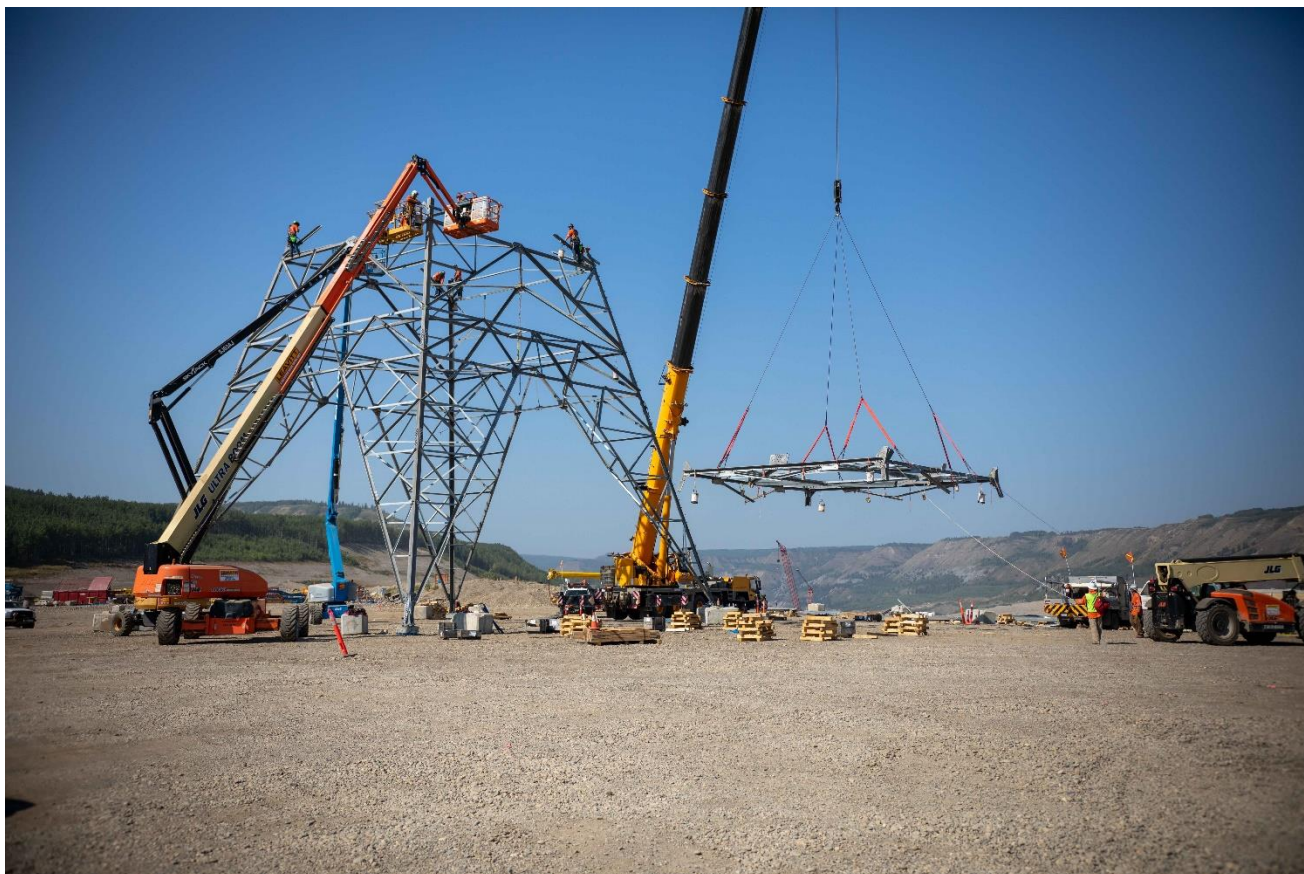


Site C Construction Schedule: September 17 - 30, 2022



The first tower of the onsite transmission line is installed. This will connect the Site C generating station to the completed substation and the BC Hydro grid. For more photos, see the image [gallery](#).

News and highlights

- Since our temporary fishway was built in 2020, nearly 3,000 fish of varying species have safely passed through the facility. Check out our latest video to learn more about how fish in the Peace River are safely moving upstream: [Watch](#).

Dam site area – north bank and south bank

- Excavation of the approach channel, drilling and grouting, placement of concrete and liner installation continues.
- Installation of steel piles in the tailrace excavation continue as part of the [right bank foundation enhancements](#). The piles extend the foundation further into the bedrock.
- Powerhouse, intakes, spillway, and earthfill dam with impervious core construction continues. This includes concrete placements at the powerhouse, intakes, penstocks, and spillways.

- Powerhouse Balance of Plant; installation of cable tray and other electrical components has started on the generator floor. The mechanical contractor has started applying coatings in the draft tube cone access area.
- Turbine and generator components and materials continue to be delivered to site, and some to storage, for future installation. To date, three of six turbines have arrived at site and the fourth turbine runner is being stored off-site. The remaining two runners will likely be delivered this winter when road conditions allow.
- Installation of turbine embedded parts continues in the powerhouse, and generator rotors are being assembled in the main service bay.
- Hauling activities continue from aggregate sources on the south bank (Area E and Area 24).
- Construction of eight foundations for three 500-kilovolt transmission lines between the Site C Substation and the Site C Powerhouse is nearing completion. Transmission tower assembly and installation is underway.

Highway 29 realignments

- [Visit our website](#) for Highway 29 schedules, maps, and construction updates.

Cache Creek East (596-metre-long bridge and six-kilometre-long highway realignment)

- Civil works, including excavation, grading and placement of riprap and aggregates on the new highway alignment will continue. Aggregates are being hauled from Peaceview Pit and Riprap will be hauled to site from a quarry near Chetwynd and stockpiled on site.
- Installation of formwork and rebar will continue for the construction of the cast-in-place concrete parapets. Concrete will be poured and delivered from Fort St John.
- Paving of the completed Cache Creek West will occur next week, followed by paving of the new alignment at Cache Creek East.
- Construction of a new distribution line adjacent to the new highway alignment may occur.

Halfway River (1.05-kilometre-long bridge and a three-kilometre-long highway realignment)

- Minor works, including some patching of asphalt pavement and concrete finishing on the bridge will occur.
- Site clean-up and demobilization of equipment will occur.
- Installation of Telus infrastructure on the bridge will occur.

Farrell Creek (417-metre-long bridge and 1.9-kilometre-long highway realignment)

- Installation of formwork and rebar for concrete parapets will continue. This may require single-lane alternating traffic. Concrete will be poured and is being supplied from Halfway River.
- Construction of the earthworks for the east and west tie-ins will continue, including removal of asphalt and hauling of aggregates from Peaceview Pit and placement on the new highway alignment. There may be single-lane alternating traffic and occasional traffic stops during construction of the tie-ins.
- Asphalt paving may occur, depending on the availability of the paving subcontractor and good weather.

Dry Creek (158-metre-long bridge and 1.5-kilometre-long highway realignment)

- The contractor will be demobilizing from the site.

Lynx Creek (152-metre-long bridge and 8.5-kilometre-long highway realignment)

- Due to the Hudson's Hope wildfire evacuation order the Lynx Creek work site has been shut down. When the evacuation order has been lifted, the following work will resume:

- Hauling and placing aggregates and riprap along the highway alignment will occur. Riprap will be hauled from Portage Mountain and quarries near Chetwynd and either placed on the new alignment or stockpiled on site.
- Processing of aggregate adjacent to Highway 29 will continue.
- Asphalt plant operation will occur, supplying asphalt for Farrell Creek and Lynx Creek paving.
- Installation of a new distribution line on the new highway alignment will continue.
- Construction of the future Lynx Creek boat launch will continue.
- A detour will be constructed to divert traffic onto the new highway embankment to allow for completion of the embankment.

Fish habitat construction near Old Fort

- Construction of the access road from the dam site to the island near the community of Old Fort, east of the dam site is now complete.
- In river excavation will continue until the end of October.
- Hauling of aggregate is in progress.

Hudson's Hope shoreline protection berm

- Due to the wildfire evacuation order the Hudson Hope berm work site has been temporarily shut down.
- When the evacuation order has been lifted, [construction of the 2.6-kilometre-long berm](#) to protect the shoreline of Hudson's Hope will resume. This includes:
 - Hauling and placing of berm filter, berm fill and riprap to bring the berm up to the design elevation. Riprap will be hauled to site from quarries near Chetwynd.
 - Hauling and placement of stockpiled aggregate on the berm will continue.
 - The installation of drainage ditches and culverts will continue.
 - The restoration of a borrow pit on the berm site will continue, including grading, placement of topsoil and hydroseeding.
 - The installation of a concrete box culvert on the berm using a large crane, will occur.
 - Water quality monitoring has been installed in the Peace River and a swift water rescue team is operating in the river during the work. Boaters are asked to obey signage and stay clear of the work area for safety reasons.
- We continue to work with the Ministry of Transportation and Infrastructure regarding the road maintenance of Canyon Drive.

Portage Mountain Quarry

- All work at Portage Mountain Quarry is on hold until the Hudson's Hope wildfire evacuation order is lifted.
- When the evacuation order has been lifted work will resume including rock hauling from the Portage Mountain Quarry stockpile areas to the Highway 29 construction site at Lynx Creek.

Reservoir area

- Due to the wildfire situation, clearing activities are paused in the western reservoir, except for helicopter waste wood piling. When the evacuation order has been lifted work will resume and this includes:
 - Removal or demolition of infrastructure within the future reservoir on BC Hydro owned land will commence in the vicinity of Cache Creek. Equipment will be mobilized to site and work may be visible from Highway 29.
 - Road maintenance and log hauling is happening on the south bank of the Peace River.
 - Construction of a new Halfway River crossing for the existing transmission line.
 - Field investigations may occur.

Halfway River East Boat Launch

- Construction of the boat launch and access road will continue, including topsoil stripping, removal of unsuitable materials, and hauling and placement of aggregate on the site.
- Unsuitable material will be hauled to a stockpile site at Halfway River.

Other areas

- Vegetation clearing has begun for the construction of access roads on the north shore of the Peace River, east of the dam site. This will support the creation of fish habitat this summer and fall.
- An increase in the number of watering trucks has begun, as well as the use of a suppression treatment product on gravel roads to mitigate dust concerns.

What to expect

Work will take place during the day, night, and on the weekend, until the project is completed. During this time, residents can expect:

Boating

- The Peace River near the dam site is permanently closed to boater traffic. Being on or near the water around the Site C construction area presents a serious safety risk to river users. Boaters are urged to stay away from the area and observe and obey all signage and beacons. [Read more.](#)

Traffic – please use caution and obey safety signage

- **Old Fort Road:** Near Gate B to the dam site, drivers may encounter loose gravel and increased commercial traffic. Due to equipment delivery, there may be [occasional short road closures](#) along Old Fort Road.
 - **Highway 29:** Construction-related equipment will travel along Highway 29 and Highway 97. Drivers on the road are reminded to travel at a safe distance behind construction vehicles particularly near the Highway 29 road realignment sections. Learn more at [drivebc.ca](#).
- Other areas:** Trucks with heavy loads will be accessing the dam site and other project areas, using public and resource roads.

Equipment, noise, vibration, and visibility

- Helicopters and commercial drones may be used to support investigative, and construction works.
- Some noise and vibration may occur near the dam site and work areas, including the quarries.
- There may be smoke and lower visibility in areas where wood debris burning is occurring.

[Sign up for construction bulletins](#) and follow us [@sitecproject](#) on Twitter to receive updates.