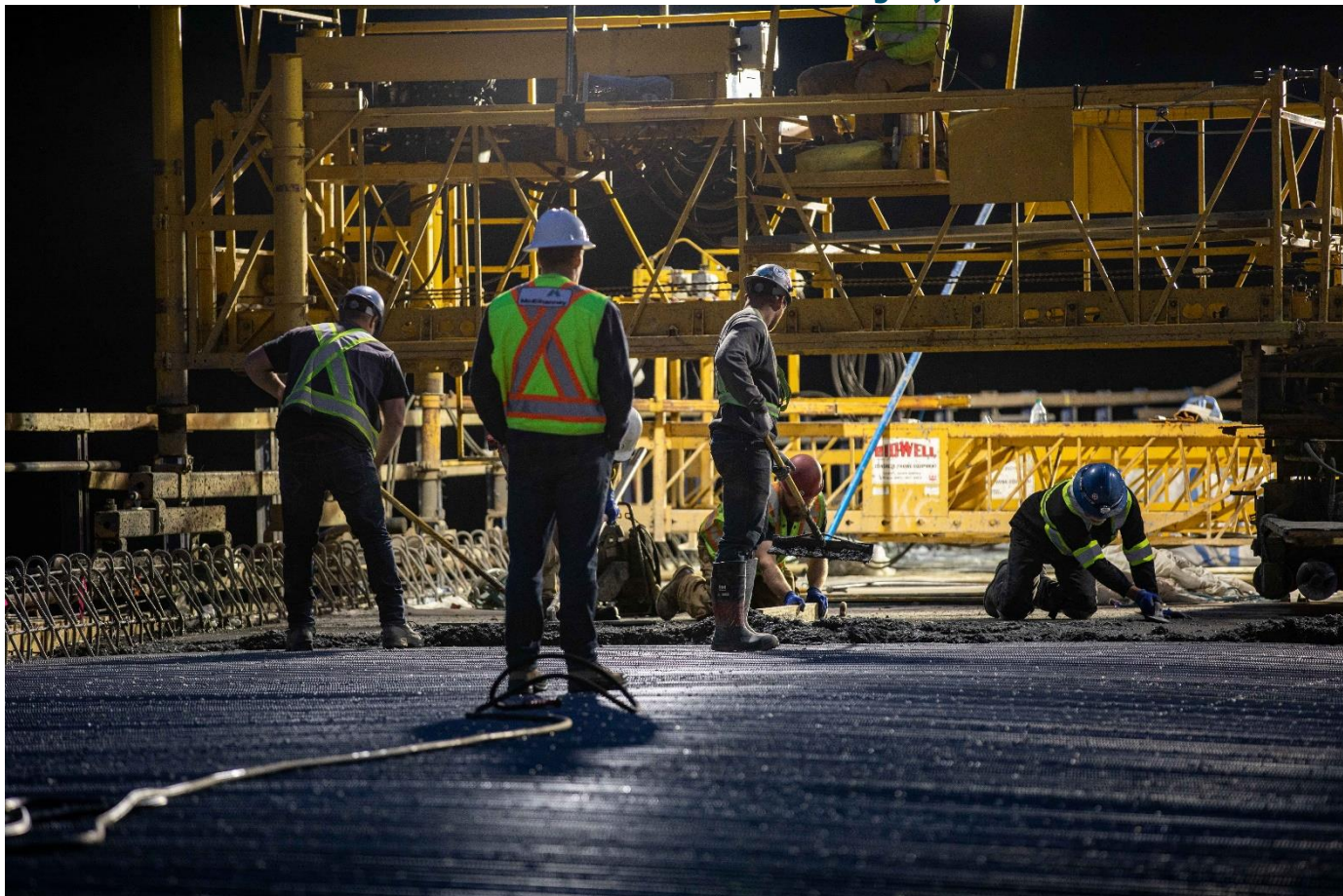


Site C Construction Schedule: June 25 – July 1, 2022



Crews work overnight to complete a concrete pour on the Lynx Creek Bridge deck, as part of the Highway 29 realignment. See more photos in the [image gallery](#).

News and highlights

- Boaters are urged to use caution near Maurice Creek near Peace Canyon Dam, where work is underway to build a spawning shoal for rainbow trout and mountain whitefish. Construction will occur from June to September 2022. [Learn more.](#)

Dam site area – north bank and south bank

- Excavation of the approach channel, drilling and grouting, and underground works on the north and south drainage features are underway. Concrete placement in the approach channel has started.
- Powerhouse, spillway, and dam and core buttress construction continues. This includes concrete placements at the powerhouse, intakes, and spillways. Installation of penstock segments also continues.
- The penstock delivery has completed.

- Powerhouse Balance of Plant; installation of cable tray and other electrical components has started on the generator floor. The mechanical contractor has started applying coatings in the draft tube cone access area.
- Installation of steel piles and tailrace excavation continue as part of the [right bank foundation enhancements](#). The piles extend the foundation further into the bedrock.
- Turbine and generator components and materials continue to be delivered to site, and some to storage, for future installation. To date, three of six turbines have arrived at site and the fourth turbine runner is being stored off-site. The remaining two runners will likely be delivered next winter when road conditions allow.
- Installation of turbine embedded parts continues in the powerhouse, and generator rotors are being assembled in the main service bay.
- Clearing and road construction activities to access aggregate sources on the south bank (Area E and Area 24) and north bank (Howe Pit) are underway.
- Construction of foundations for three 500-kilovolt transmission lines between the Site C Substation and the Site C Powerhouse will continue.

Highway 29 realignments

- [Visit our website](#) for Highway 29 schedules, maps, and construction updates.

Cache Creek East (596-metre-long bridge and six-kilometre-long highway realignment)

- Construction of the highway grade will continue including processing of aggregates in Peaceview Pit.
- The installation of formwork and rebar will continue for the construction of the cast-in-place concrete bridge deck. The installation of the concrete bridge deck and parapets will occur in sections. This may require 24-hour operations.
- The construction of a new distribution line adjacent to the new highway alignment may occur.

Halfway River (1.05-kilometre-long bridge and a three-kilometre-long highway realignment)

- Earthworks on the east and west bridge approaches will continue, including asphalt paving.
- There will be single lane alternating traffic during removal of existing pavement and paving of tie-ins.

Farrell Creek East (3.5-kilometre-long highway realignment)

- Construction will continue, including completion of outstanding drainage works, installation of riprap hydroseeding, and preparation of the paving surface for the top lift of asphalt.

Farrell Creek (417-metre-long bridge and 1.9-kilometre-long highway realignment)

- The installation of formwork and rebar on the bridge deck will continue. This may require single lane alternating traffic.
- Concrete pouring may occur on the bridge deck. This will occur in sections and may require 24-hour operations and single-lane alternating traffic.
- Construction of the east abutment, including installation of formwork and rebar, will continue. Concrete pouring will occur.
- Construction of the earthworks for the east and west tie-ins will resume, including hauling of aggregates from Peaceview Pit and placement on the new highway alignment.

Dry Creek (158-metre-long bridge and 1.5-kilometre-long highway realignment)

- Construction will continue, including the construction of future fish habitat, which involves placing, grading, and contouring gravels.
- The installation of drainage ditches, culverts, removal of unsuitable materials from the future roadbed and the hauling and placement of aggregates will occur.

- The removal of asphalt on the existing highway and preparation for paving and tying in the new alignment will occur. Asphalt paving of the new alignment may occur.
- Construction of slope stabilization measures within the Dry Creek valley will continue. Removal of temporary construction bridges may occur.

Lynx Creek (152-metre-long bridge and 8.5-kilometre-long highway realignment)

- The Contractor will be hauling and placing aggregates and riprap along the highway alignment. Riprap may be hauled from Portage Mountain and stockpiled on site.
- Processing of aggregate adjacent to Highway 29 and on Gates Island will continue. An asphalt plant will be mobilized to site and asphalt will be produced for Dry Creek, Farrell Creek East, and Lynx Creek paving.
- The construction of the cast-in-place concrete bridge deck and parapets will occur in multiple lifts. This may require 24-hour operations.
- The installation of a new distribution line on the new highway alignment may occur.
- The construction of the future Lynx Creek boat launch will continue.

Fish habitat construction near Old Fort

- Construction of the access road from the dam site to the island near the community of Old Fort, east of the dam site, will continue over the next month.
- Clearing of the regrowth vegetation on the island will be completed when water levels are conducive to fording the back channel.
- In river excavation will not start until prep work is completed on the island.

Hudson's Hope shoreline protection berm

- The [construction of a 2.6-kilometre-long berm](#) to protect the shoreline of Hudson's Hope is in progress. Work includes hauling and placing of berm filter, berm fill and riprap to bring the berm up to the design elevation. Riprap will be hauled to site from Portage Mountain Quarry and Commotion Creek Quarry near Chetwynd.
- Hauling and placement of stockpiled aggregate on the berm will continue.
- The installation of piping and other materials for a future reservoir water intake may occur.
- The installation of drainage ditches and culverts will continue.
- The restoration of a borrow pit on the berm site will continue, including grading, placement of topsoil and hydroseeding.
- Water quality monitoring has been installed in the Peace River and a swift water rescue team is operating in the river during the work. Boaters are asked to obey signage and stay clear of the work area for safety reasons.
- We continue to work with the Ministry of Transportation and Infrastructure regarding the road maintenance of Canyon Drive.

Portage Mountain Quarry

- Road and quarry maintenance will continue to maintain safe access to the site.
- Rock hauling will continue from the Portage Mountain Quarry and stockpile areas to the berm worksite; hauling may resume to Highway 29 construction at Lynx Creek.

Reservoir area

- Field investigations may occur.
- Road maintenance and log hauling may occur on the south bank of the Peace River.
- Construction of fish habitat on the south bank of the Peace River near Maurice Creek will occur, including site preparation, gravel hauling and in river placement of material.

Transmission works

- The transmission line contractor will continue work on tower foundation painting, welding and reclamation works.

Halfway River East Boat Launch

- Crews and equipment may mobilize to the Halfway River east boat launch site to begin construction.

Other areas

- Vegetation clearing has begun for the construction of access roads on the north shore of the Peace River, east of the dam site. This will support the creation of fish habitat this summer and fall.

COVID-19 update

- The project continues to work with Northern Health to monitor the latest developments of the COVID-19 pandemic to help prevent the spread of the virus on the project, additional information is updated on our website [here](#).
- The shuttle service, which was suspended due to the COVID-19 pandemic in 2020 resumed at the beginning of April 2022 and will operate between ATCO Two Rivers Lodge and Fort St. John.

What to expect

Work will take place during the day, night, and on the weekend, until the project is completed. During this time, residents can expect:

Boating

- The Peace River near the dam site is permanently closed to boater traffic. Being on or near the water around the Site C construction area presents a serious safety risk to river users. Boaters are urged to stay away from the area and observe and obey all signage and beacons. [Read more.](#)

Traffic – please use caution and obey safety signage

- **Old Fort Road:** Near Gate B to the dam site, drivers may encounter loose gravel and increased commercial traffic. Due to equipment delivery, there may be [occasional short road closures](#) along Old Fort Road.
- **Highway 29:** Construction-related equipment will travel along Highway 29 and Highway 97. Drivers on the road are reminded to travel at a safe distance behind construction vehicles particularly near the Highway 29 road realignment sections. Learn more at [drivebc.ca](#).
- **Other areas:** Trucks with heavy loads will be accessing the dam site and other project areas, using public and resource roads.

Equipment, noise, vibration, and visibility

- Helicopters and commercial drones may be used to support investigative, and construction works.
- Some noise and vibration may occur near the dam site and work areas, including the quarries.
- There may be smoke and lower visibility in areas where wood debris burning is occurring.

[Sign up for construction bulletins](#) and follow us [@siteproject](#) on Twitter to receive updates.