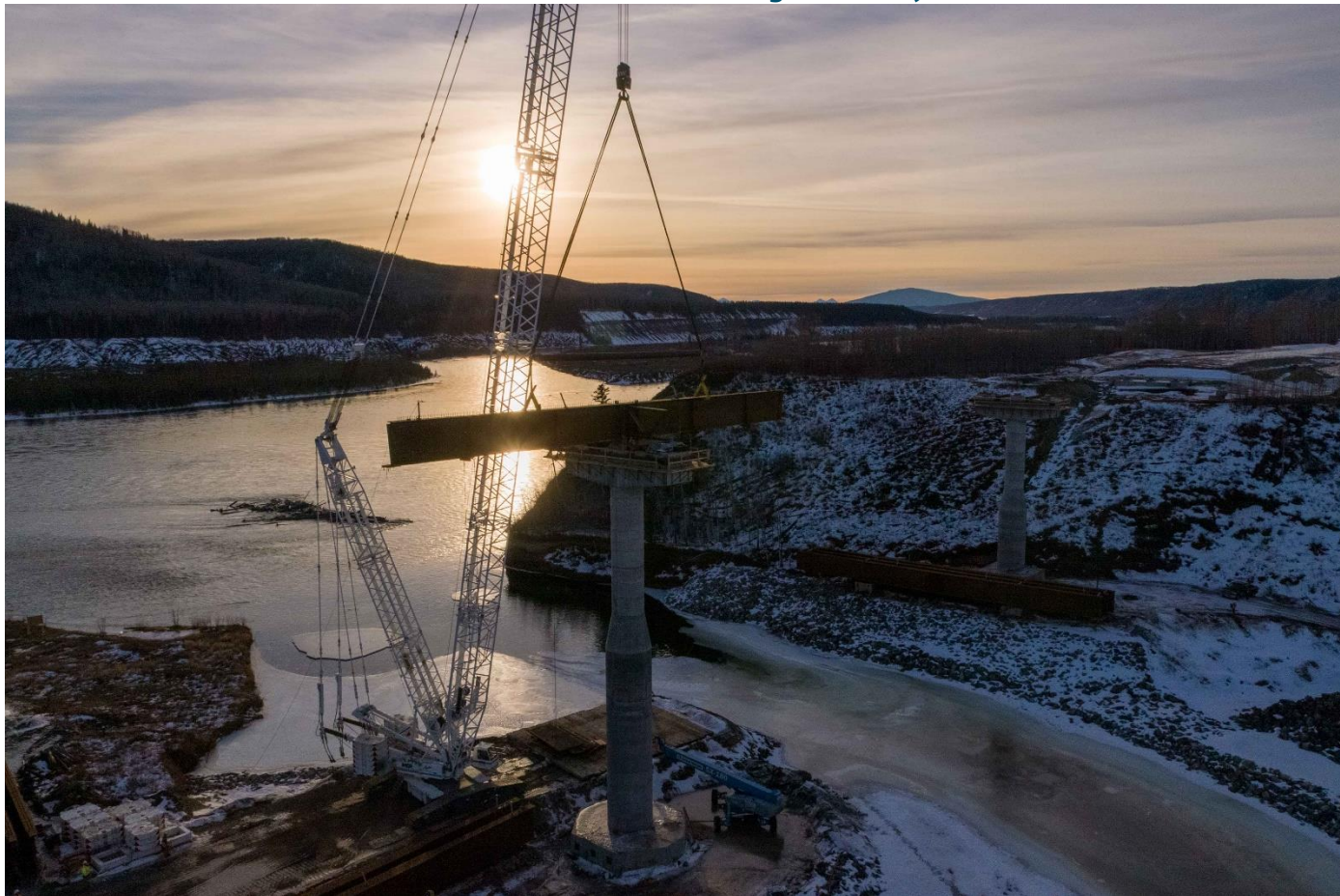


Site C Construction Schedule: February 5 – 18, 2022



Crews lifting and installing the girders across the new Farrell Creek Bridge. It is one of five new crossings along Highway 29, and completion is expected in 2022. More photos in the [image gallery](#).

News and highlights

- Our latest jobs report shows there were 4,175 total workers on Site C in December 2021. Read the [full report](#).
- On January 21, BC Hydro submitted Applications for Approval to Transport Canada under the *Canadian Navigable Waters Act* for activities related to downstream contouring activities for fish habitat enhancement work. Read more in the Regulatory section below.

COVID-19 update

- With the continued spread of the Omicron variant across the province, additional health and safety measures remain in place including the rapid testing of workers returning to site. The project is working with Northern Health to monitor the latest developments of the COVID-19 pandemic in order to help prevent the spread of the virus on the project.

- As of January 10, 2022, all workers on the Site C project are fully vaccinated.
- Information about the number of active COVID-19 cases, the number of people in isolation, and the overall number of cases at Site C continues to be updated on our website [here](#).

Dam site area – north bank and south bank

- We are experiencing winter conditions on Old Fort Road near Gate B and mandatory chain up is required.
- Excavation of the approach channel, drilling and grouting, and underground works on the north and south drainage features are underway. Placement of earthfill dam shell material continues.
- Powerhouse, spillway, and dam and core buttress construction continues. This includes concrete placements at the powerhouse, intakes and spillways. Installation of penstock segments also continues.
- Installation of steel piles and Tailrace excavation continue as part of the [right bank foundation enhancements](#). The piles extend the foundation further into the bedrock.
- Turbine and generator components and materials continue to be delivered to site for storage and installation. The remaining four turbine runners are scheduled to be delivered to site over the coming months; however, the contractor is facing weather challenges in moving the runners to Site from Prince Rupert.
- Drainage improvements on the Site C transmission line right-of-way above the substation will resume.

Highway 29 realignments

- [Visit our website](#) for Highway 29 schedules, maps and construction updates.

Cache Creek East (596-metre-long bridge and six-kilometre-long highway realignment)

- Construction of the highway grade is paused for the winter and will resume in the spring.
- Steel bridge girders will continue to be assembled on site and installed on the foundations. This may require 24-hour work.

Halfway River (1.05-kilometre-long bridge and a three-kilometre-long highway realignment)

- Construction is paused for the winter and will resume in the spring.

Farrell Creek East (3.5-kilometre-long highway realignment)

- Traffic has been moved onto the new highway alignment.
- Construction is paused for the winter and will resume in the spring.

Farrell Creek (417-metre-long bridge and 1.9-kilometre-long highway realignment)

- Construction of the highway grade has paused for winter and will resume in the spring.
- Steel girders will continue to be delivered and stored on the site. Steel girder installation has begun.
- Single lane alternating traffic will be required periodically and several night time road closures may be required. Check [DriveBC](#) for details.
- BCH Hydro Distribution crews will start installing the new Distribution line along the new Hwy alignment.

Dry Creek (158-metre-long bridge and 1.5-kilometre-long highway realignment)

- Construction is paused for the winter and will resume in the spring.

Lynx Creek (152-metre-long bridge and 8.5-kilometre-long highway realignment)

- Construction is paused for the winter and will resume in the spring.

Hudson's Hope shoreline protection berm

- The [construction of a 2.6-kilometre-long berm](#) to protect the shoreline of Hudson's Hope is in progress. Work includes producing, hauling and placing berm filter and riprap to bring the berm up to the design elevation. Riprap will be hauled to site from Portage Mountain Quarry.
- Excavation, crushing, processing and stockpiling of aggregate within the berm site will occur.
- The removal of the District of Hudson's Hope decommissioned water intake will continue.
- Water quality monitoring has been installed in the Peace River and a swift water rescue team is operating in the river during the work. Boaters are asked to obey signage and stay clear of the work area for safety reasons.
- BC Hydro continues to work with the Ministry of Transportation and Infrastructure regarding the road maintenance of Canyon Drive.

Portage Mountain Quarry

- Processing and stockpiling of riprap will continue for use at the Hudson's Hope berm and various Highway 29 construction sites. Rock hauling will continue from the Portage Mountain Quarry and stockpile areas to the berm worksite and to work areas along Highway 29.

Reservoir area

- Road construction and logging activities are occurring between Cache Creek and Peace Canyon on the north and south banks of the Peace River and on its islands. Boats and helicopters are being used to support clearing activities. Merchantable timber is being hauled to mills in Chetwynd, Fort St John and/or Dawson Creek.
- Helicopters will be transporting timber between Cache Creek and Peace Canyon as part of Site C reservoir clearing work. [Learn more.](#)
- Burning and processing of waste wood will continue this month. Burning will only occur when venting and ground conditions are suitable. [Learn more.](#)
- Access road improvements and foundation construction will occur in the Halfway River region for the rerouting of the existing transmission line that crosses the Halfway River, which will be impacted by the new reservoir.
- Construction of fish habitat will occur on an island of the Peace River near Peace Canyon Dam.
- Field investigations may occur.

Transmission works

- Conductor stringing will continue on the transmission line between Site C and Jackfish Lake Road.
- Surveying, foundation painting, site clean-up and restoration activities will continue.
- Wood waste may be burned pending venting conditions.

Regulatory

- On January 21, 2022, BC Hydro submitted Applications for Approval to Transport Canada under the *Canadian Navigable Waters Act* for activities related to downstream contouring activities for fish habitat enhancement work.
- Registry # 4959 is for the downstream contouring activities required to complete fish habitat enhancements. Contouring activities are located on the north and south bank of the Peace River, for an approximately 4km reach downstream of the Site C dam site. Downstream contouring activities are scheduled to commence in spring 2022 and be complete by winter 2024.
- Registry # 4957 is for the construction of a temporary crossing on a side channel of the Peace River, approximately 4kms downstream of the Site C dam site. The crossing is required for access to an area

identified as 109L Lower. Crossing construction is scheduled to commence spring 2022 and be in place until winter 2023.

- Comments on these applications can be submitted via the [Common Project Search](#) or by emailing NPPAC-PPNPAC@tc.gc.ca.

WHAT TO EXPECT

Work will take place during the day, night, and on the weekend, until the project is completed. During this time, residents can expect:

Boating

- The Peace River near the dam site is permanently closed to boater traffic. Being on or near the water around the Site C construction area presents a serious safety risk to river users. Boaters are urged to stay away from the area and observe and obey all signage and beacons.

Traffic – please use caution and obey safety signage

- **Old Fort Road:** Near Gate B to the dam site, drivers may encounter loose gravel and increased commercial traffic. Due to equipment delivery, there may be [occasional short road closures](#) along Old Fort Road.
- **Highway 29:** Construction-related equipment will travel along Highway 29 and Highway 97. Drivers on the road are reminded to travel at a safe distance behind construction vehicles particularly near the Highway 29 road realignment sections. Learn more at drivebc.ca.
- **Other areas:** Trucks with heavy loads will be accessing the dam site and other project areas, using public and resource roads.

Equipment, noise, vibration and visibility

- Heavy machinery will be in the transmission line corridor. Please stay clear of the work areas.
- Helicopters and commercial drones may be used to support investigative and construction works.
- Some noise and vibration may occur near the dam site and work areas, including the quarries.
- There may be smoke and lower visibility in areas where wood debris burning is occurring.

[Sign up for construction bulletins](#) and follow us [@sitecproject](#) on Twitter to receive updates.