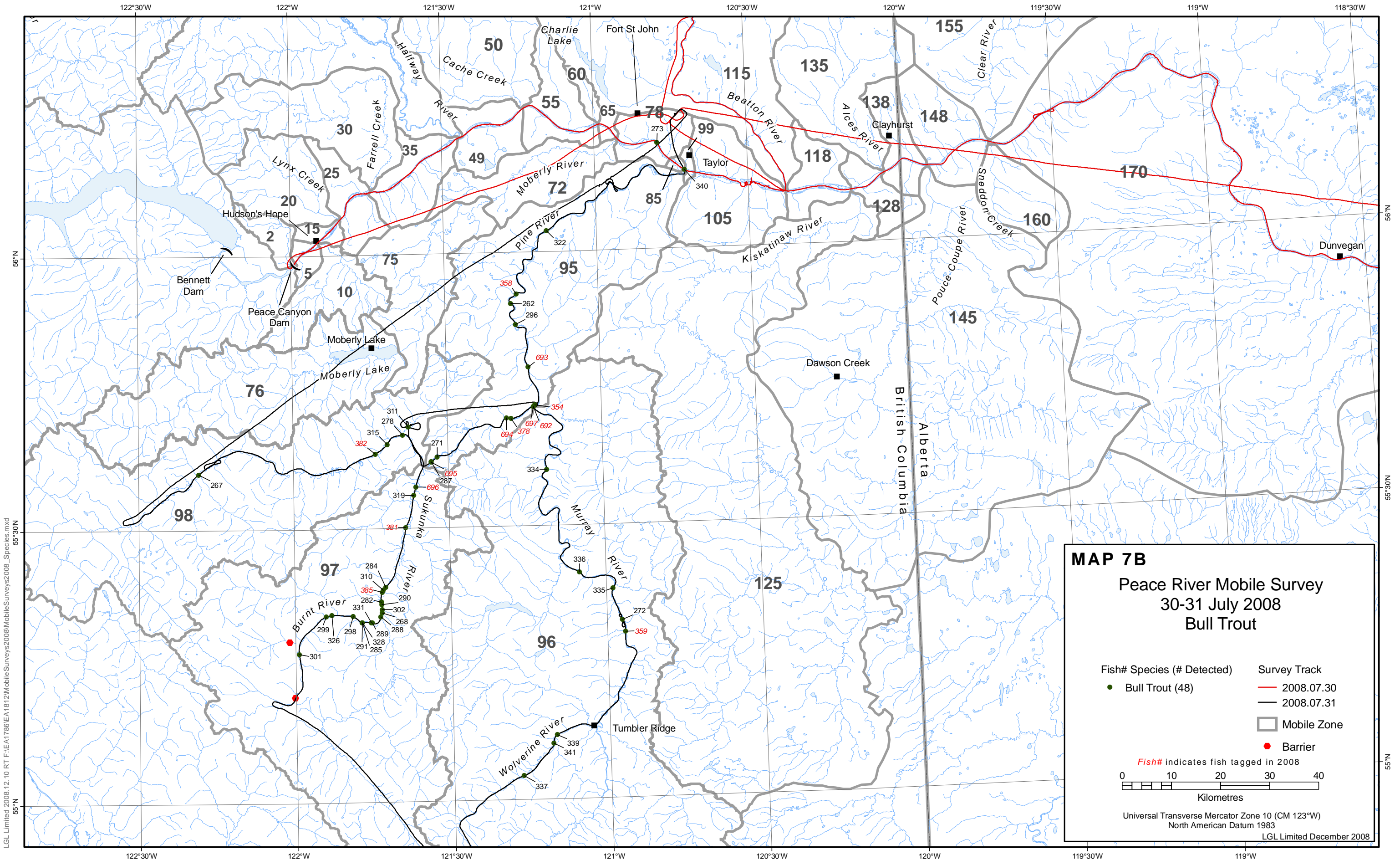
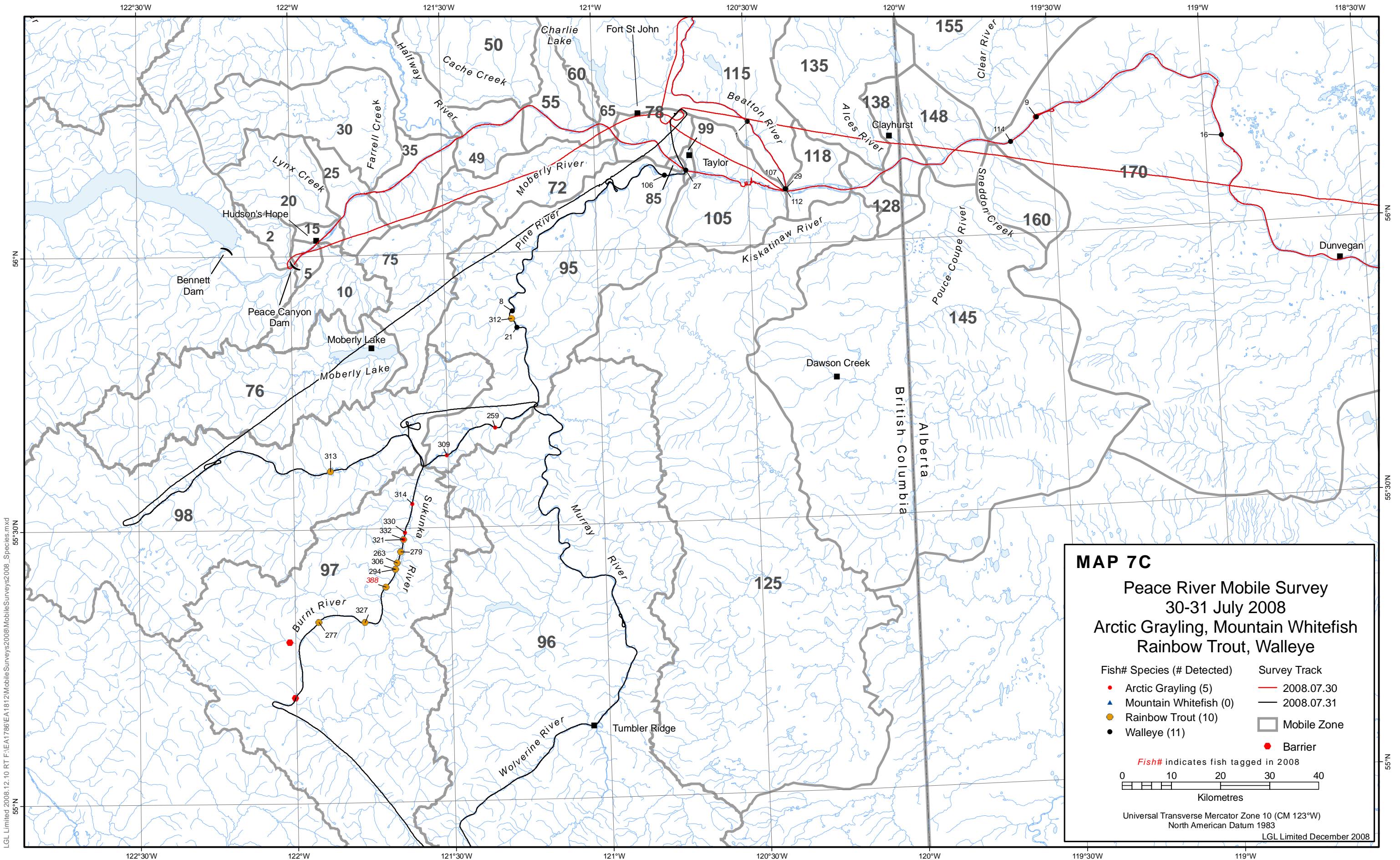


LGL Limited 2008.12.10 RT F:\EA1786\EA1812\MobileSurveys2008\FinalReport_SurveyTrack.mxd



LGL Limited 2008.12.10 RT F:\EA1786\EA1812\Mobile Surveys\2008\Mobile Surveys\2008_Species.mxd



LGL Limited 2008.12.10 RT F:\EA\786\EA1812\Mobile Surveys\2008\Mobile Surveys\2008_Species.mxd 55°30'N

MAP 7C
Peace River Mobile Survey
30-31 July 2008
Arctic Grayling, Mountain Whitefish
Rainbow Trout, Walleye

Fish# Species (# Detected)	Survey Track
● Arctic Grayling (5)	— 2008.07.30
▲ Mountain Whitefish (0)	— 2008.07.31
● Rainbow Trout (10)	▭ Mobile Zone
● Walleye (11)	● Barrier

Fish# indicates fish tagged in 2008

0 10 20 30 40
 Kilometres

Universal Transverse Mercator Zone 10 (CM 123°W)
 North American Datum 1983
 LGL Limited December 2008

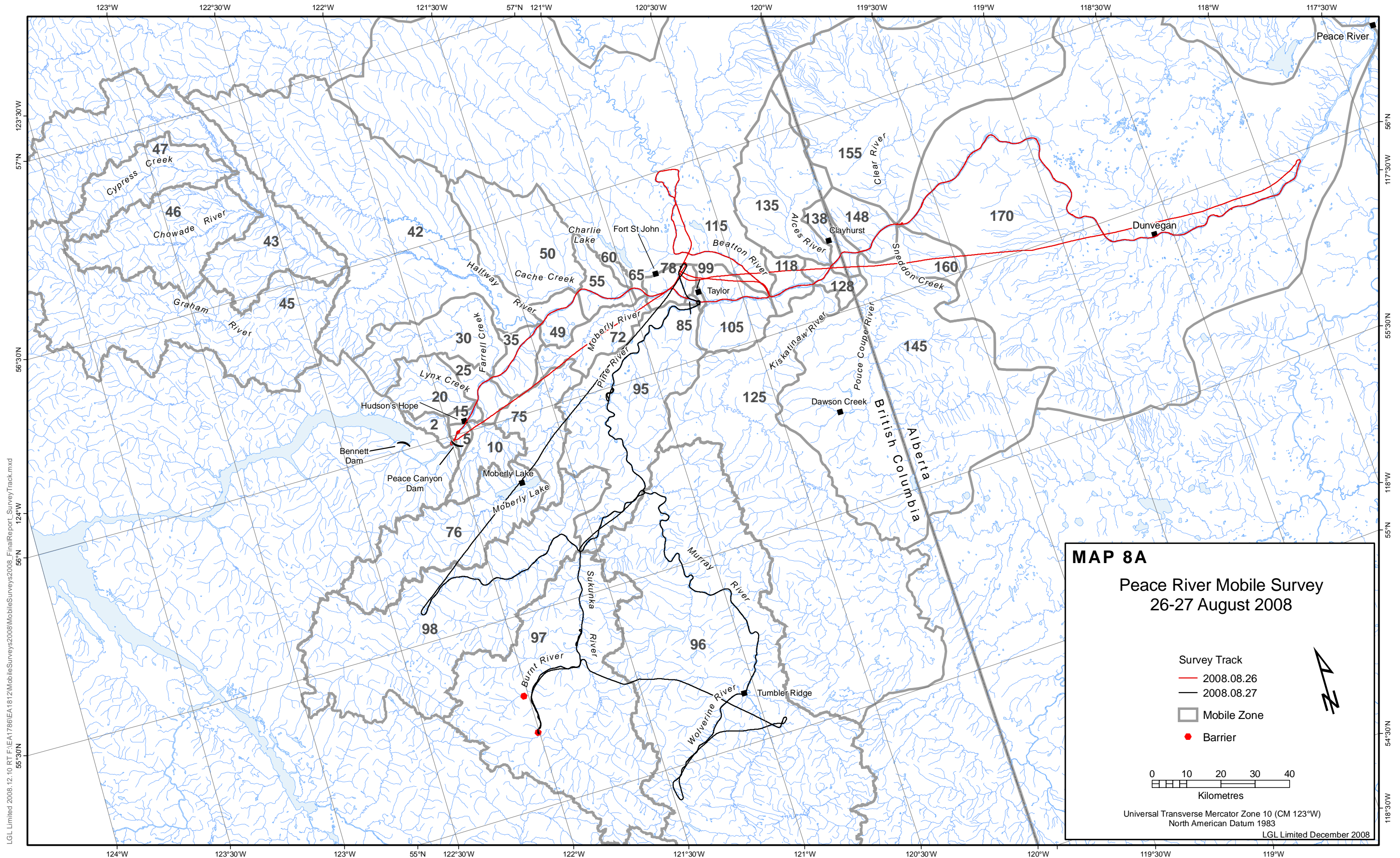
August Track, 26-27 August (Map 8)

Tagged bull trout, released in 2008, accounted for 32% (14) of the 44 fish detected in total during this survey. As noted previously, fish tagged in 2008 were mainly detected in the mainstem of the Sukunka River and the mid-Pine River. For all tagged bull trout (all years) 2% (1) were detected in the Peace mainstem, whereas the remaining fish were detected in the Pine River watershed. These tagged bull trout were distributed similarly to that recorded during the 30-31 July survey as follows: 25% (11) were in the mid-Pine River mainstem and the Sukunka River; 23% (10) were in the Murray/Wolverine River system; 21% (9) were in the Burnt River; and, 5% (2) were located in the upper Pine River mainstem.

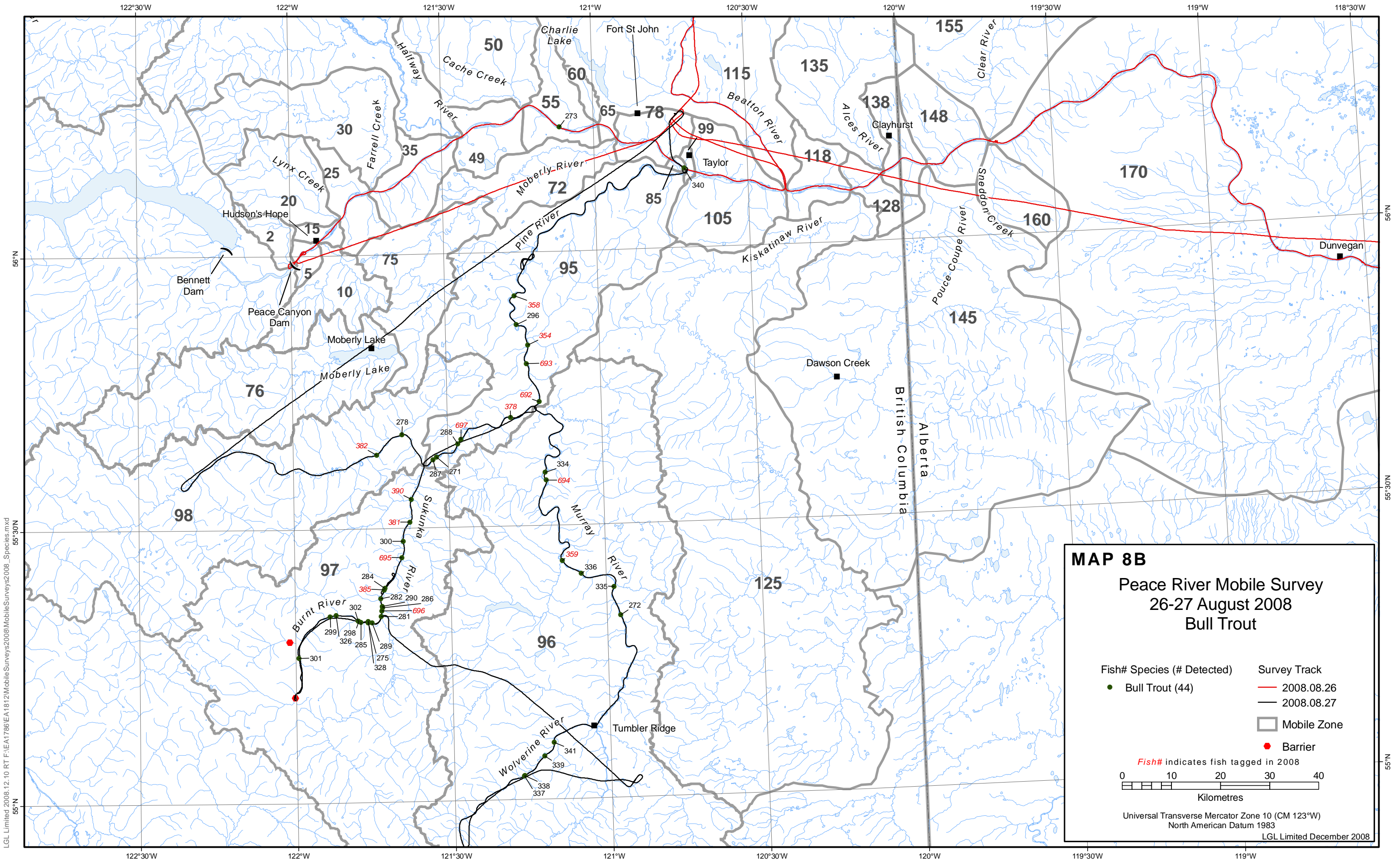
In the Pine River watershed, tag detections for rainbow trout and Arctic grayling were primarily fish released in 2008. Fish tagged and released in 2006 that were detected during this survey included four rainbow trout (24%) and four Arctic grayling (17%). For tagged fish released in 2006 and 2008 combined, detections were mostly in the Sukunka/Burnt river system and the mid-Pine River mainstem.

Two of three walleye, previously detected upstream in the Pine River mainstem during 30-31 July survey, were at the mouth of the Pine River. Most of the remaining tagged walleye (8) were widely scattered between the Beatton River and Dunvegan, Alberta.

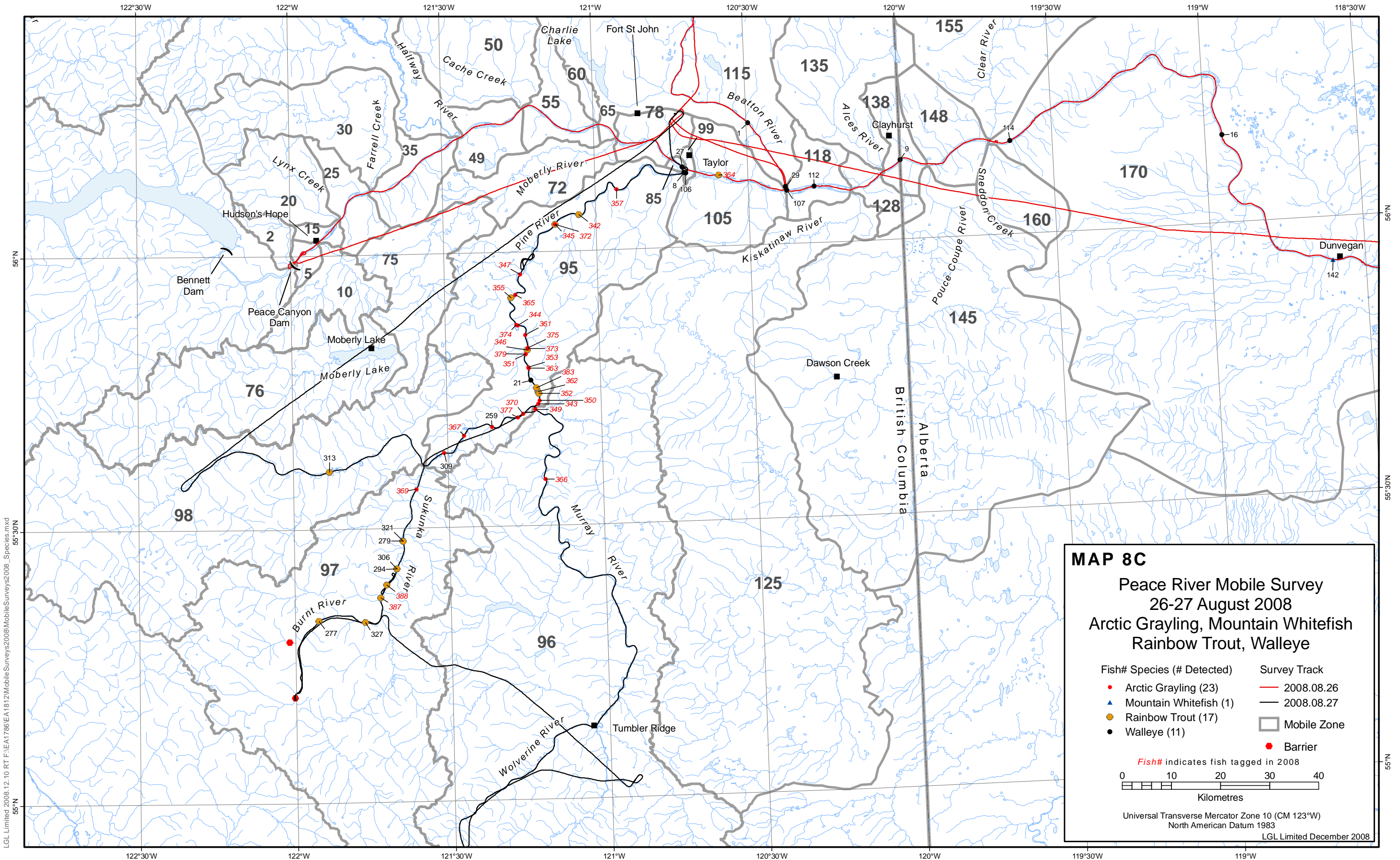
This page is intentionally blank



Map 8A: Peace River mobile survey track (August 26-27, 2008)



LGL Limited 2008.12.10 RT F:\EA1786\EA1812\Mobile Surveys\2008\Mobile Surveys\2008_Species.mxd



LGL Limited 2008.12.10 RT F:\EA1786\EA1812\Mobile Surveys\2008\Mobile Surveys\2008_Species.mxd 55°30'N

Map 8C: Mobile survey for Arctic grayling, mountain whitefish, rainbow trout and walleye (August 26-27, 2008)

September Tracks (Maps 9 & 10)

First Track, 9-10 September (Map 9)

Bull trout were not detected in the Peace River mainstem during this survey. One tagged bull trout (Tag 273), was repeatedly detected in the Peace mainstem below Cache Creek since the end May 2008, but was located in the lower Pine River approximately 30 km from the mouth during this survey. Of the 46 tagged bull trout detected in total, all were located in the Pine River watershed, with the 2008 releases constituting 46% (21) of the total detections, mainly in the Sukunka, mid Pine River mainstem, and Murray/Wolverine drainage. Overall, for the bull trout released in 2006 and 2008 combined, 33% (15) were in the mid-Pine River mainstem, 30% (14) were in the Murray/Wolverine river system, 22% (10) were in the Sukunka River, 11% (5) were in the Burnt River, and 4% (2) were located in the upper Pine River.

With the exception of one tagged rainbow trout (Tag 364) detected in the Peace mainstem (~5 km downstream from the Pine River mouth), rainbow trout and Arctic grayling were not detected outside of the Pine River. Tag detections for both these species were dominated by fish released in 2008 at this time and comprised approximately 75% (30) of the total detections. Overall, the distribution of tag detections (old and new releases combined) differed somewhat between species. For example, tagged rainbow trout were widely distributed from the Burnt River downstream to the lower Pine River mainstem, whereas tagged Arctic grayling were mainly detected in the mid-lower Pine River mainstem.

Of the few (7) walleye detected during this survey, one was located in the Pine River upstream from the mouth and four were between the mouths of the Pine and Beatton rivers.

Second Track, 25-26 September (Map 10)

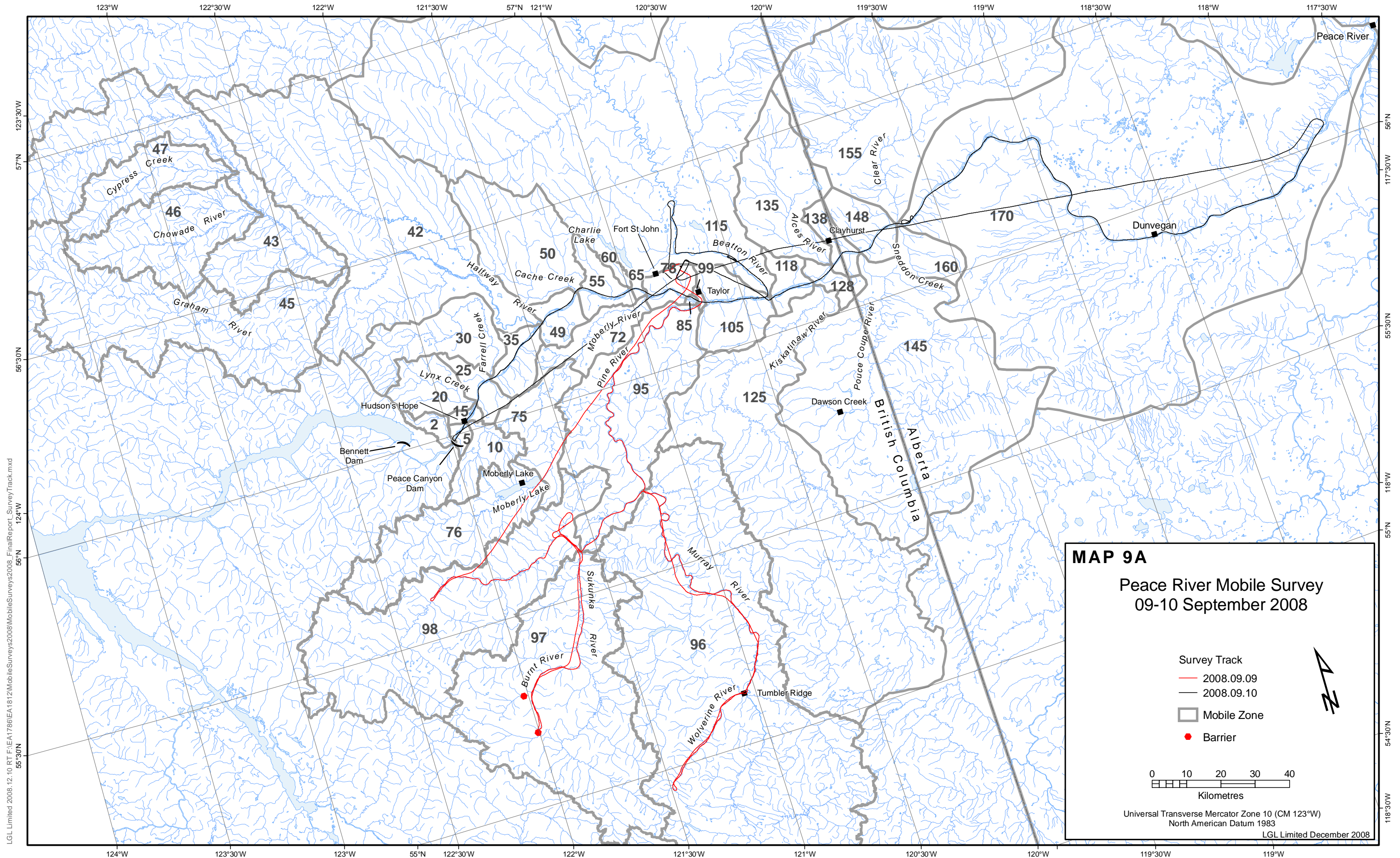
Although fish were not detected in the Halfway River during the months preceding this survey, this tributary was surveyed extensively on 25th of September to confirm that tagged bull trout were not present.

Bull trout, tagged in 2008, accounted for 44% (21) of the 48 bull trout detected during this survey. All tagged bull trout were distributed in the mainstem Pine River and Murray River drainage. However, in the Sukunka and Burnt rivers drainages tag detections were predominantly made up of 2006 tagged fish. Overall, tag detections for all tagged bull trout included: 29% (14) in the Pine River mainstem (from Sukunka River confluence-Pine River mouth); 27% (13) in the Murray/Wolverine river system; 23% (11) in the Sukunka River; 13% (6) in the Burnt River; 4% (2) in the upper Pine River; and, one tagged fish (Tag

457), released in 2008, was located in the Peace mainstem near the Alces River.

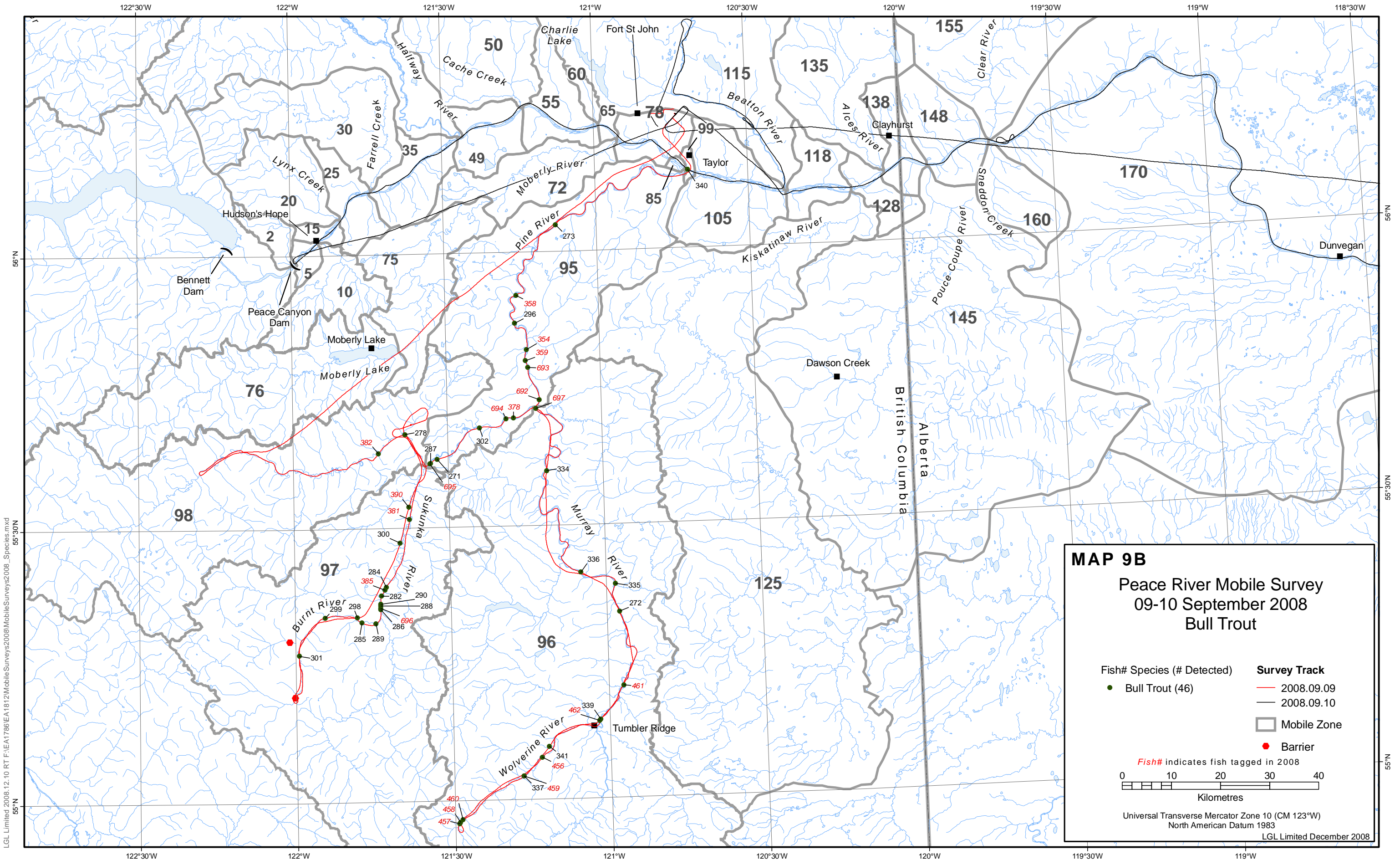
There were no major differences in the distributions of rainbow trout and Arctic grayling between this and the 9-10 September survey. For both species combined, fish released in 2008 made up the bulk (82%; 32) of the 39 fish detected. As in the 9-10 September survey, rainbow trout were widely distributed (from Burnt River to the lower Pine River), whereas Arctic grayling were mainly detected in the mid-lower Pine River mainstem.

Of the few tagged walleye detected, 50% (3) were at the mouth of the Beatton River.



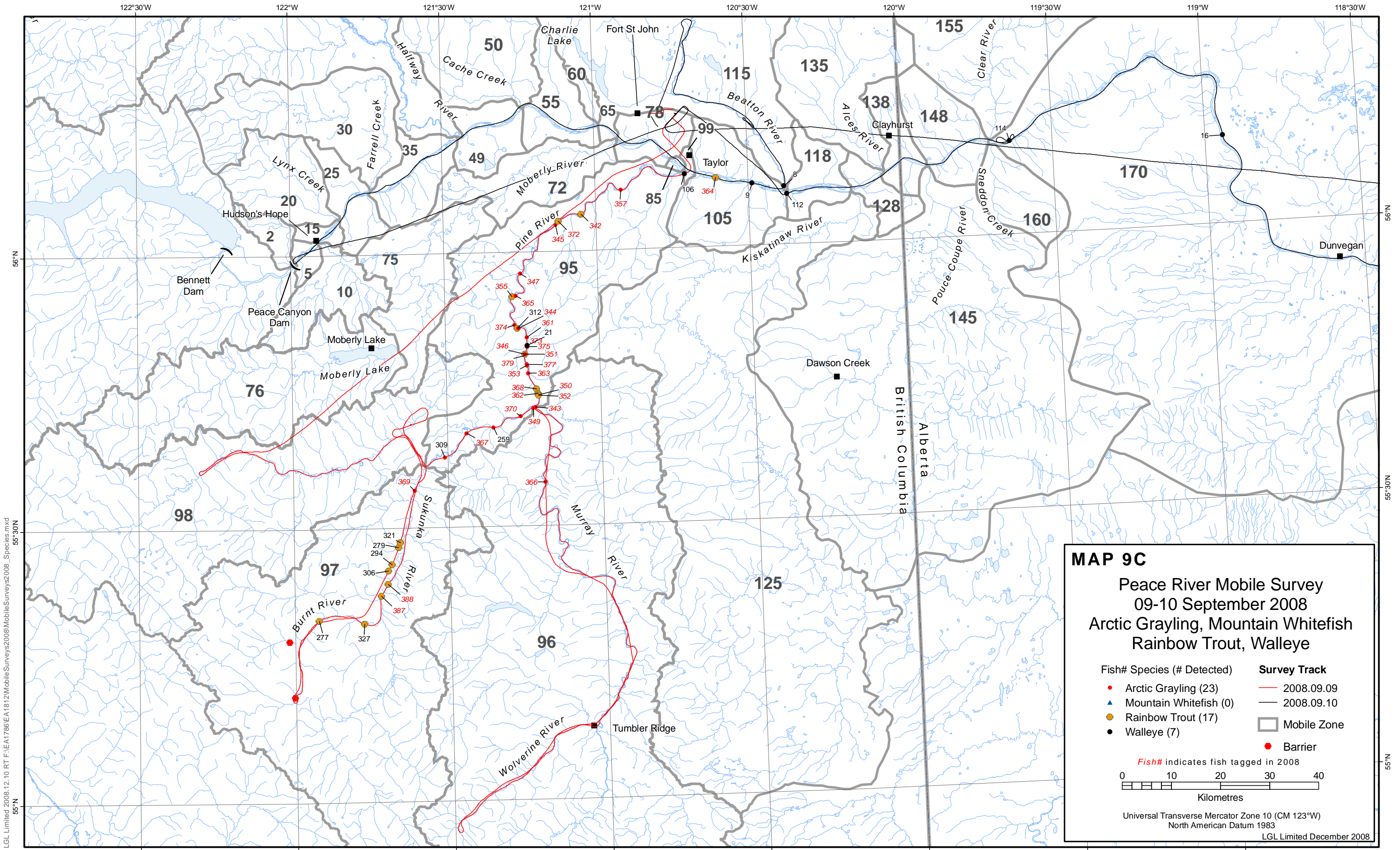
LGL Limited 2008.12.10 RT F:\EA1786\EA1812\MobileSurveys2008\FinalReport_SurveyTrack.mxd

Map 9A: Peace River mobile survey track (September 9-10, 2008)



LGL Limited 2008.12.10 RT.F:\EA1786\EA1812\Mobile Surveys\2008\Mobile Surveys\2008_Species.mxd

Map 9B: Mobile survey for bull trout (September 9-10, 2008)



LGL Limited 2008.12.10 RT F:\EA1786\EA1812\Mobile Surveys\2008\Mobile Surveys\2008_Species.mxd
55°30'N

Map 9C: Mobile survey for Arctic grayling, mountain whitefish, rainbow trout and walleye (September 9-10, 2008)

