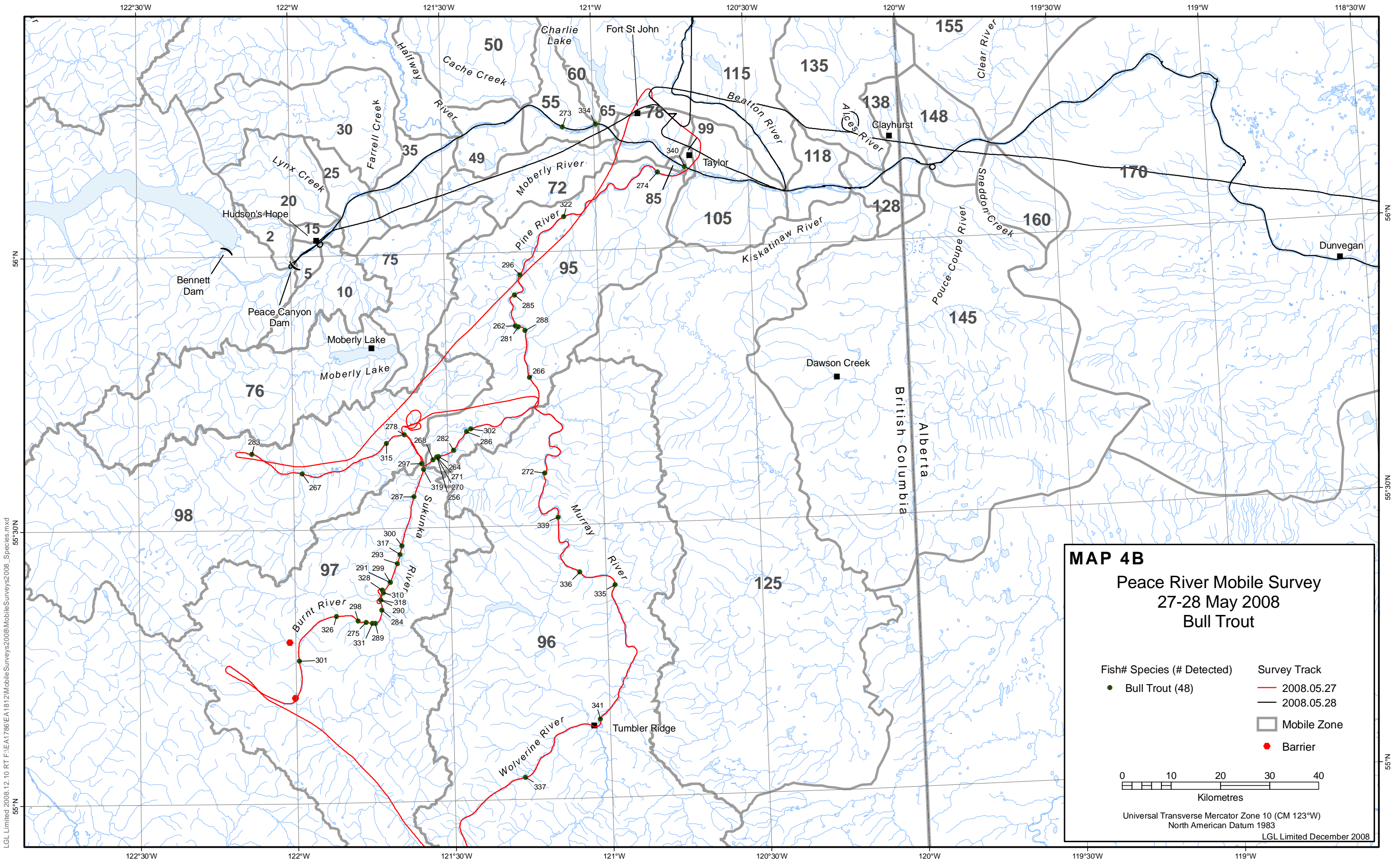


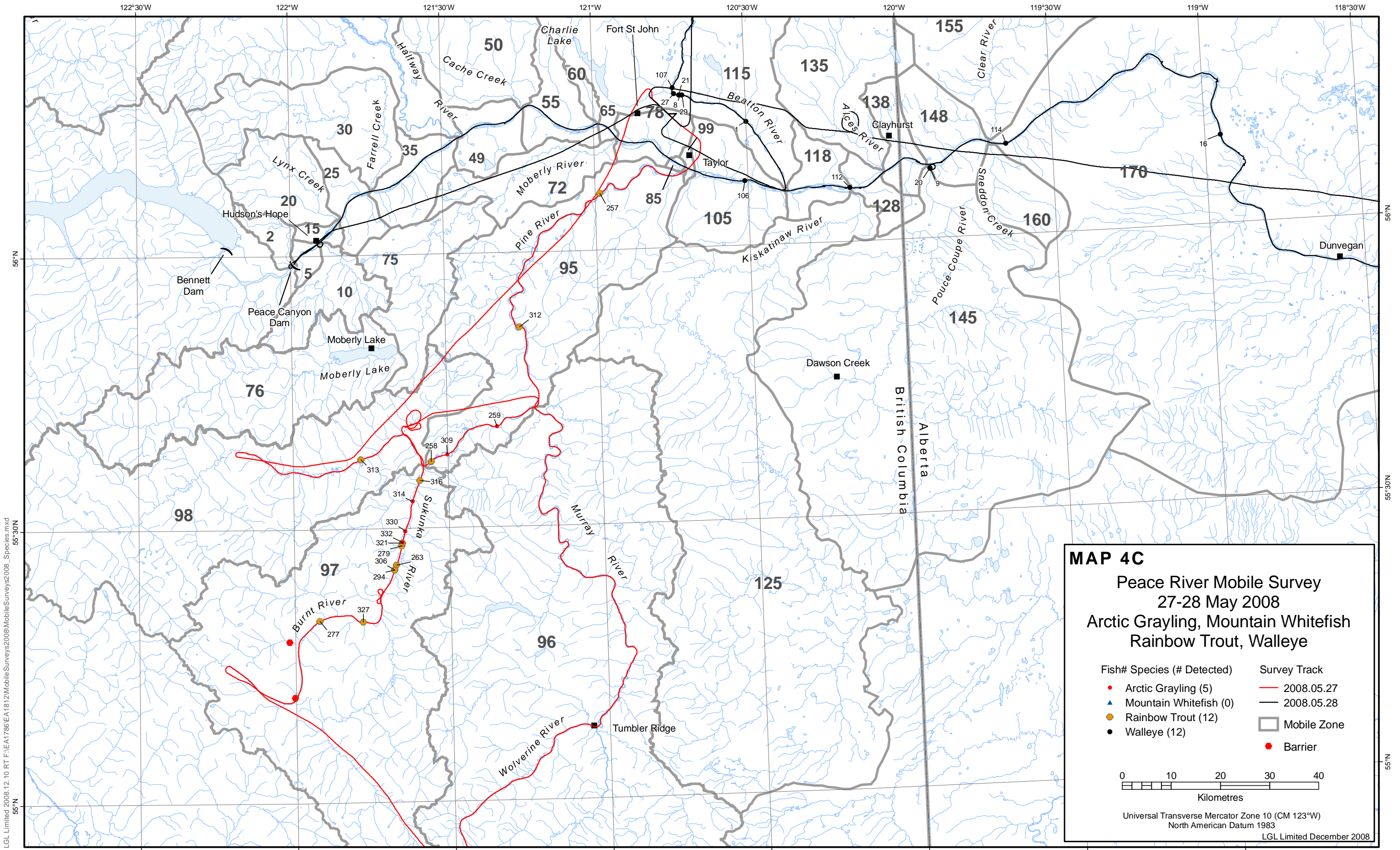
LGL Limited 2008.12.10 RT F:\EA1786\EA1812\MobileSurveys2008\MobileSurveys2008_FinalReport_SurveyTrack.mxd

Map 4A: Peace River mobile survey track (May 27-28, 2008)



LGL Limited 2008.12.10 RT F:\EA1786EA1812\Mobile Surveys\2008\Mobile Surveys\2008_Species.mxd

Map 4B: Mobile survey for bull trout (May 27-28, 2008)



LGL Limited 2008.12.10 RT F:\EA1786EA1812\Mobile Surveys\2008\MobileSurveys2008_Species.mxd 55°30'N

Map 4C: Mobile survey for Arctic grayling, mountain whitefish, rainbow trout and walleye (May 27-28, 2008)

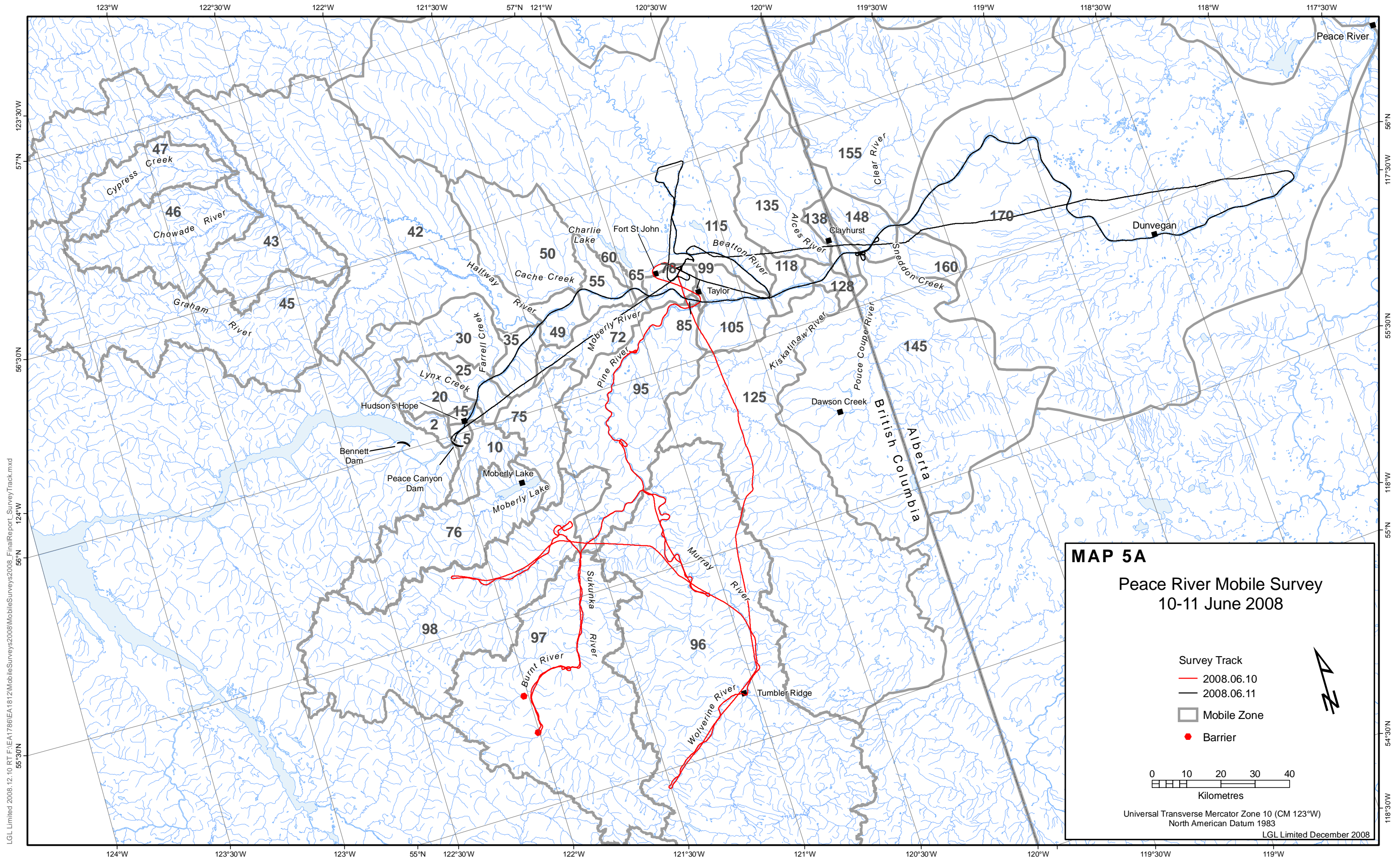
June Track, 10-11 June (Map 5)

During this survey, a total of three (7%) bull trout were detected in the Peace mainstem, just upstream of the Moberly confluence. Two of these three bull trout had been observed at this location during previous surveys, while the third fish (Tag 274) was located in the Pine River (near the mouth). Of the 45 bull trout detected in total, 33% (15) were in the Pine River mainstem (Sukunka River confluence to the mouth), 24% in the Sukunka River, 13% (6) in each of the Burnt and upper Pine rivers, and 9% (4) in the Murray/Wolverine River drainage.

There was no obvious change in the distribution of rainbow trout and Arctic grayling in the Pine River watershed, with both species being mostly in the Sukunka River and a few widely scattered in the Pine River mainstem.

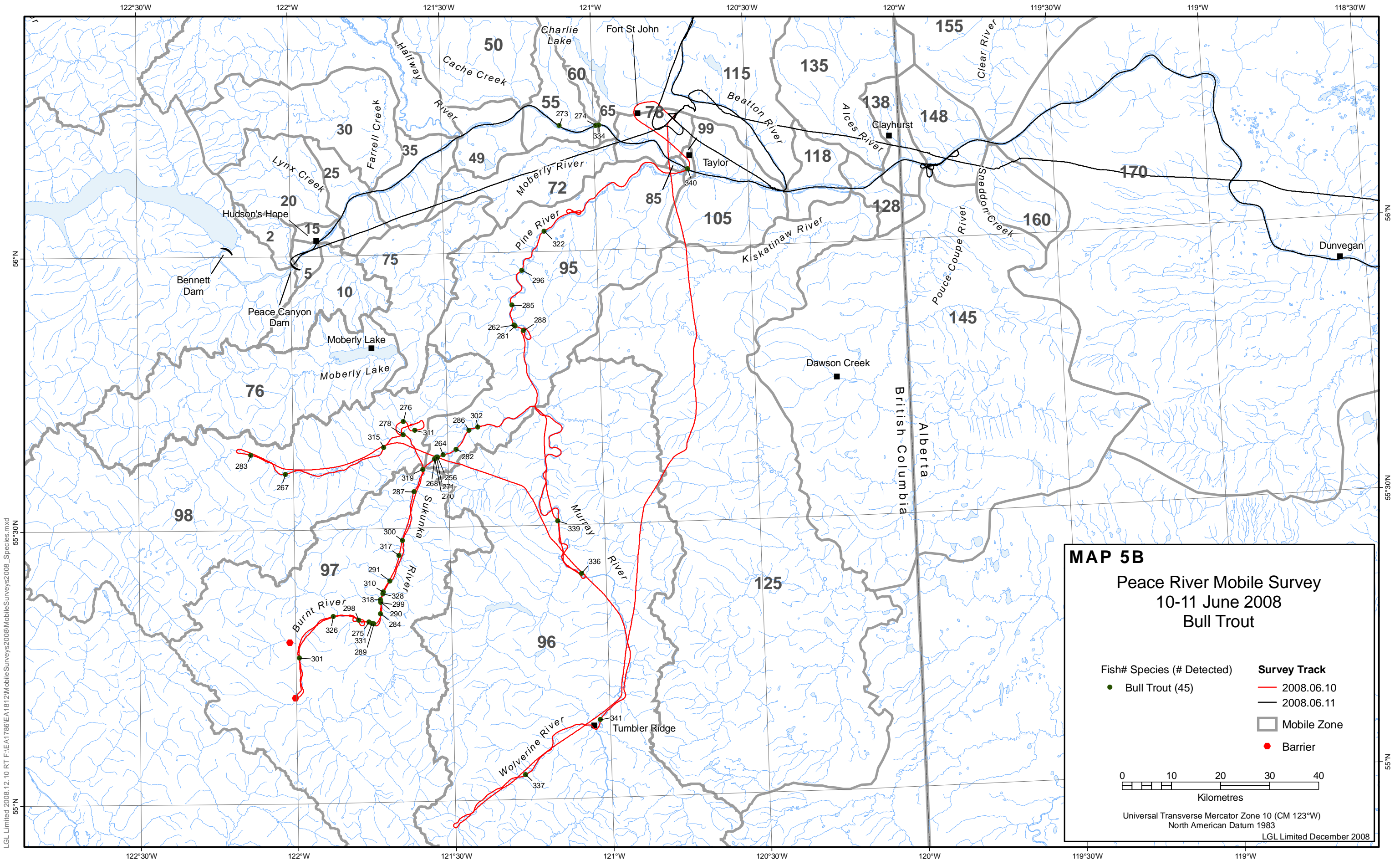
Walleye were no longer aggregated upstream in the Beatton River, with several fish moving downstream and some exiting. Two tagged walleye were detected at the mouth of the Beatton River, one was in the Peace mainstem near the mouth of the Pine River, and the others were widely scattered in the Peace mainstem downstream of the Beatton River.

This page is intentionally blank



LGL Limited 2008.12.10 RT F:\EA1786\EA1812\MobileSurveys2008\FinalReport_SurveyTrack.mxd

Map 5A: Peace River mobile survey track (June 10-11, 2008)



LGL Limited 2008.12.10 RT F:\EA1786\EA1812\Mobile Surveys\2008\Mobile Surveys\2008_Species.mxd

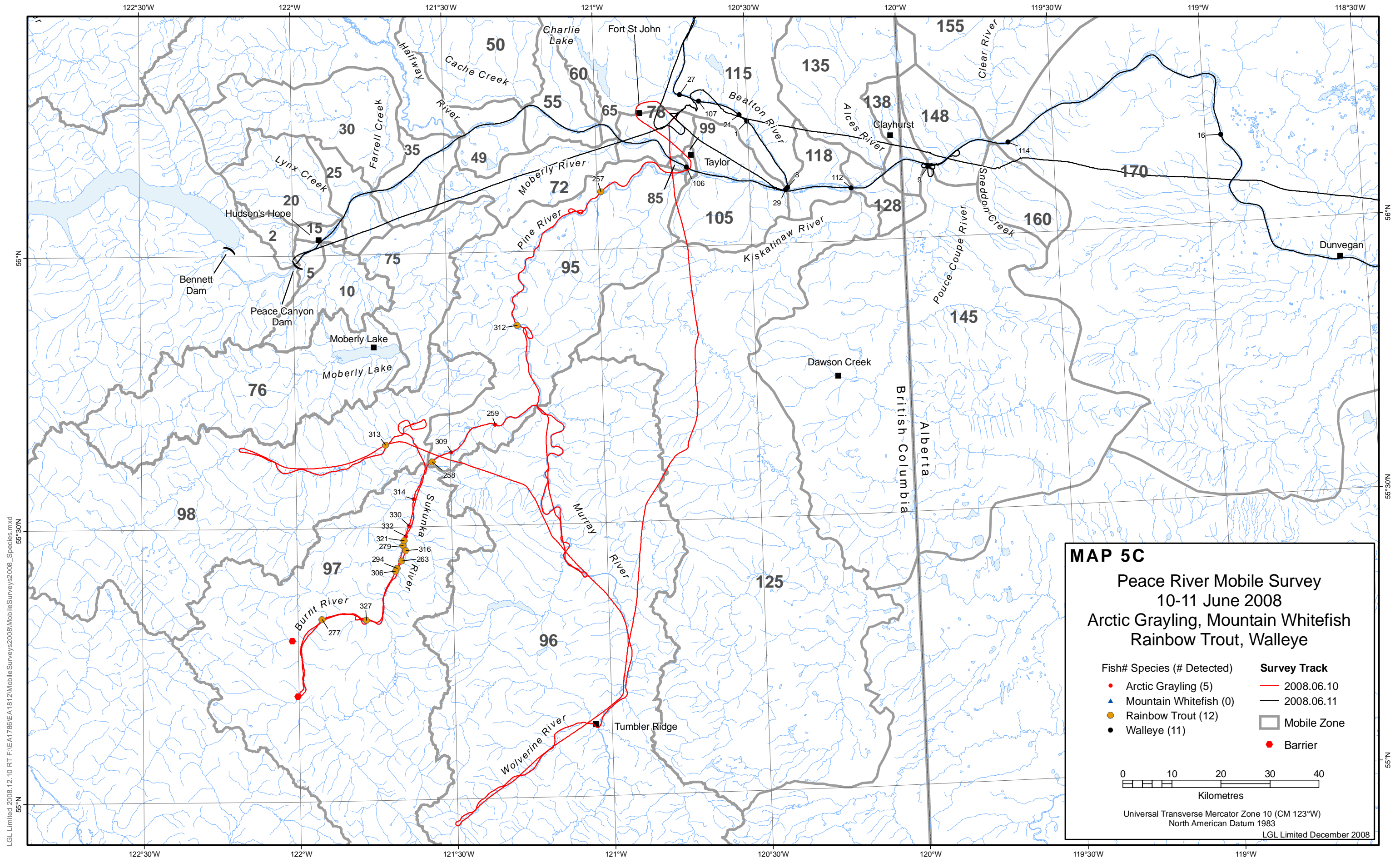
MAP 5B
Peace River Mobile Survey
10-11 June 2008
Bull Trout

| | |
|-----------------------------------|---------------------|
| Fish# Species (# Detected) | Survey Track |
| ● Bull Trout (45) | — 2008.06.10 |
| | — 2008.06.11 |
| | ▭ Mobile Zone |
| | ● Barrier |

0 10 20 30 40
 Kilometres

Universal Transverse Mercator Zone 10 (CM 123°W)
 North American Datum 1983
 LGL Limited December 2008

Map 5B: Mobile survey for bull trout (June 10-11, 2008)



LGL Limited 2008.12.10 RT F:\EA1786EA1812\Mobile Surveys\2008\Mobile Surveys\2008_Species.mxd

Map 5C: Mobile survey for Arctic grayling, mountain whitefish, rainbow trout and walleye (June 10-11, 2008)

July Tracks (Maps 6 & 7)

First Track, 1-2 July (Map 6)

In total, 49 bull trout were detected during the 1-2 July survey, which included 7 (14%) newly tagged bull trout from the Pine River. Overall, tag detections were distributed as follows: 4% (2) in the Peace mainstem just downstream of Cache Creek; 31% (15) in the Pine River mainstem (from Sukunka River confluence to the Pine River mouth); 27% (13) in the Sukunka River; 16% (8) in the Burnt River; 14% (7) in the Murray/Wolverine River mainstem; and, 10% (5) in the upper Pine River. One tagged bull trout (*Tag 334*), moved into the Pine River and was detected at the mouth of the Murray River at this time; in all previous 2008 surveys this fish was detected in the Peace mainstem just upstream of the Moberly River. Two tagged bull trout (*Tag 299* and *328*), previously detected in the Sukunka River, had moved into the Burnt River.

The distribution of rainbow trout and Arctic grayling in the Pine River watershed was essentially unchanged from that of the previous survey, with a greater proportion of the tagged fish still in the Sukunka River. Tagged rainbow trout, released in the Pine River watershed in 2008, comprised approximately 15% (2) of the total number (13) detected during this survey.

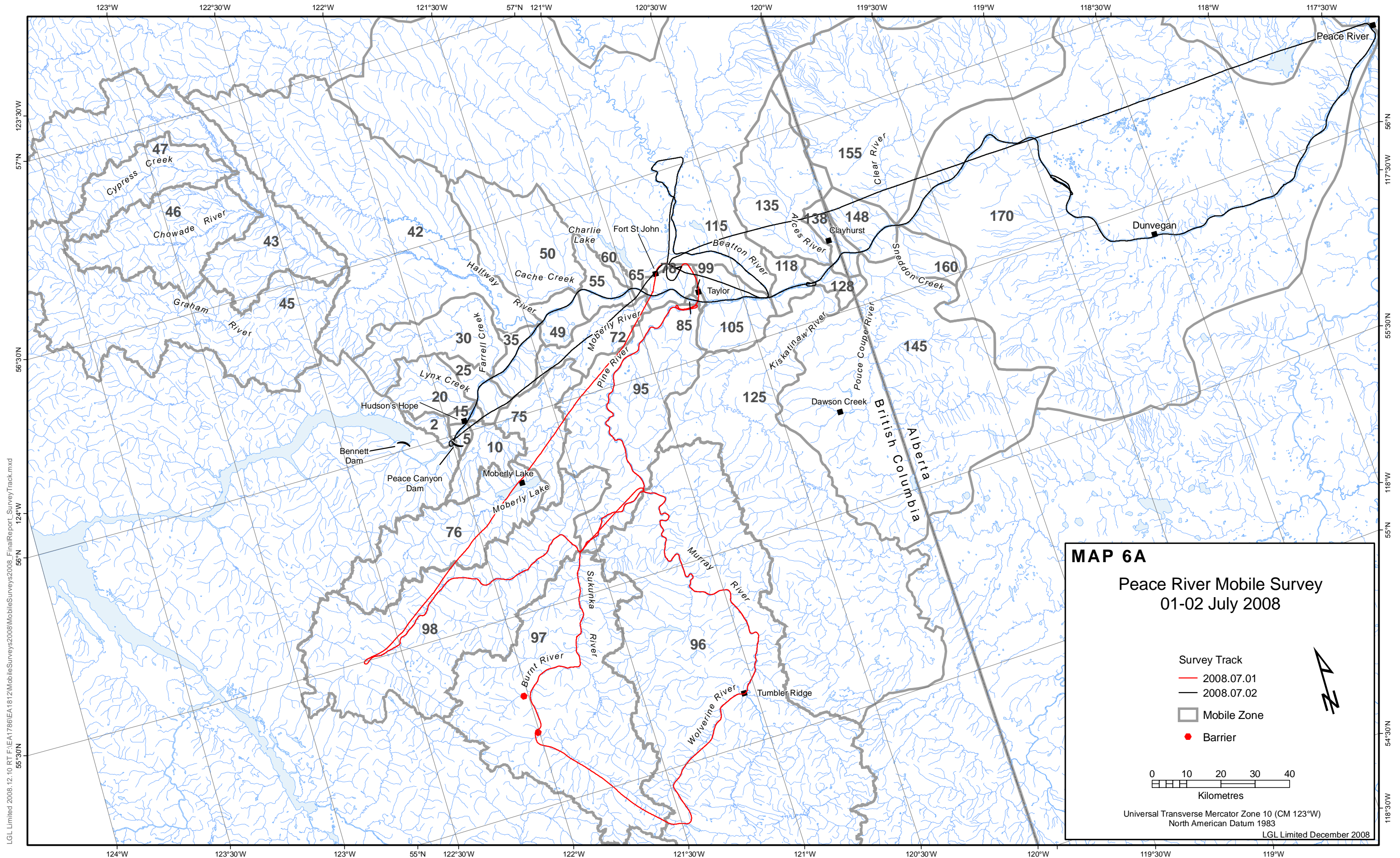
Most walleye (2 remained) had exited the Beatton River, three of which were detected in the Pine River mainstem from the mouth to some 50 km upstream, and the other 5 detected were widespread in the Peace River, downstream of the Pine River.

Second Track, 30-31 July (Map 7)

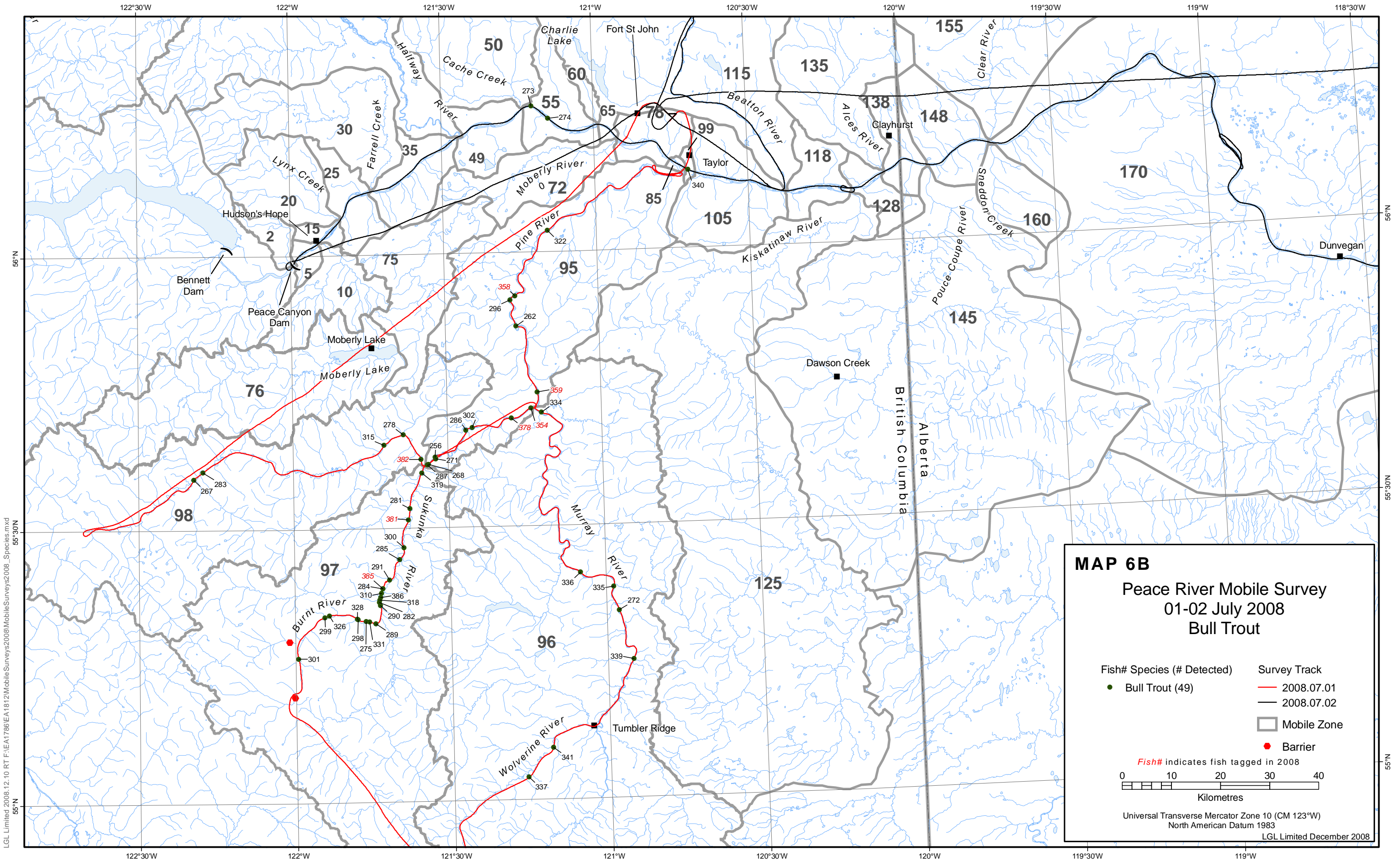
Newly tagged bull trout (June and July 2008) comprised 25% (12) of the total 48 fish detected during this survey. Tag detections for the newly released bull trout were mostly in the mainstem of the Sukunka River and mid-Pine River, near their release location. Overall, 2% (1) of these tagged bull trout were in the Peace mainstem, 29% (14) were in the Pine River mainstem (Sukunka River confluence-Pine River mouth), 23% (11) were in the Sukunka River, 19% (9) were in the Burnt River, 17% (8) were in the Murray/Wolverine River mainstem, and 10% (5) were located in the upper Pine River. Since the 1-2 July survey, some tagged bull trout also moved from the Sukunka River to the Burnt River.

There was no major change in the distribution of tagged rainbow trout and Arctic grayling in the Pine River watershed relative to that of the 1-2 July survey.

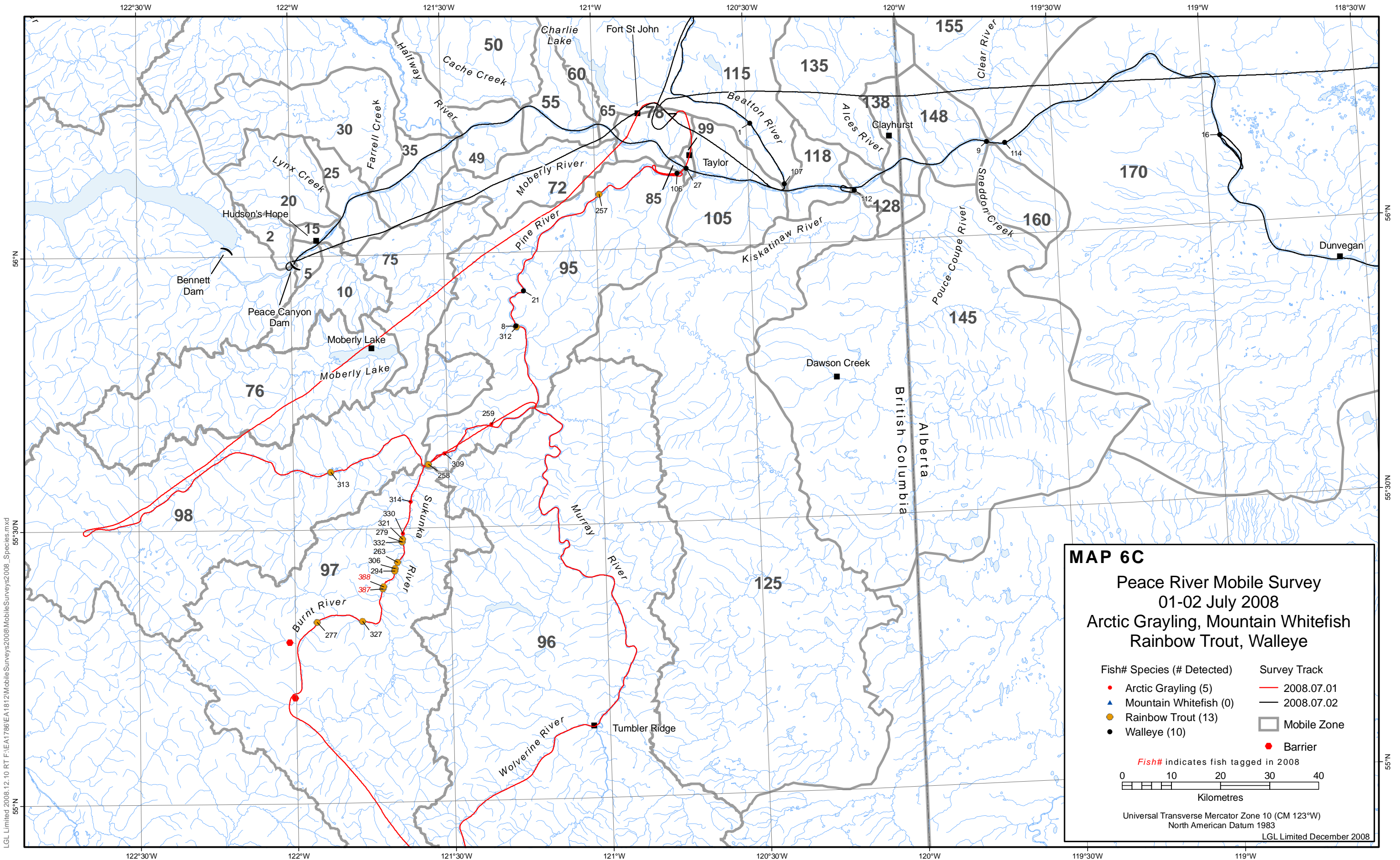
Similarly, the distribution of walleye did not change compared to the 1-2 July survey, with several tagged fish remaining in the Pine River and other individuals scattered from the mouth of the Beatton River to near Dunvegan, Alberta.



LGL Limited 2008.12.10 RT F:\EA1786\EA1812\MobileSurveys2008\MobileSurveys2008_FinalReport_SurveyTrack.mxd



LGL Limited 2008.12.10 RT F:\EA1786\EA1812\Mobile Surveys\2008\Mobile Surveys\2008_Species.mxd



LGL Limited 2008.12.10 RT F:\EA1786EA1812\Mobile Surveys\2008\Mobile Surveys\2008_Species.mxd
55°30'N

