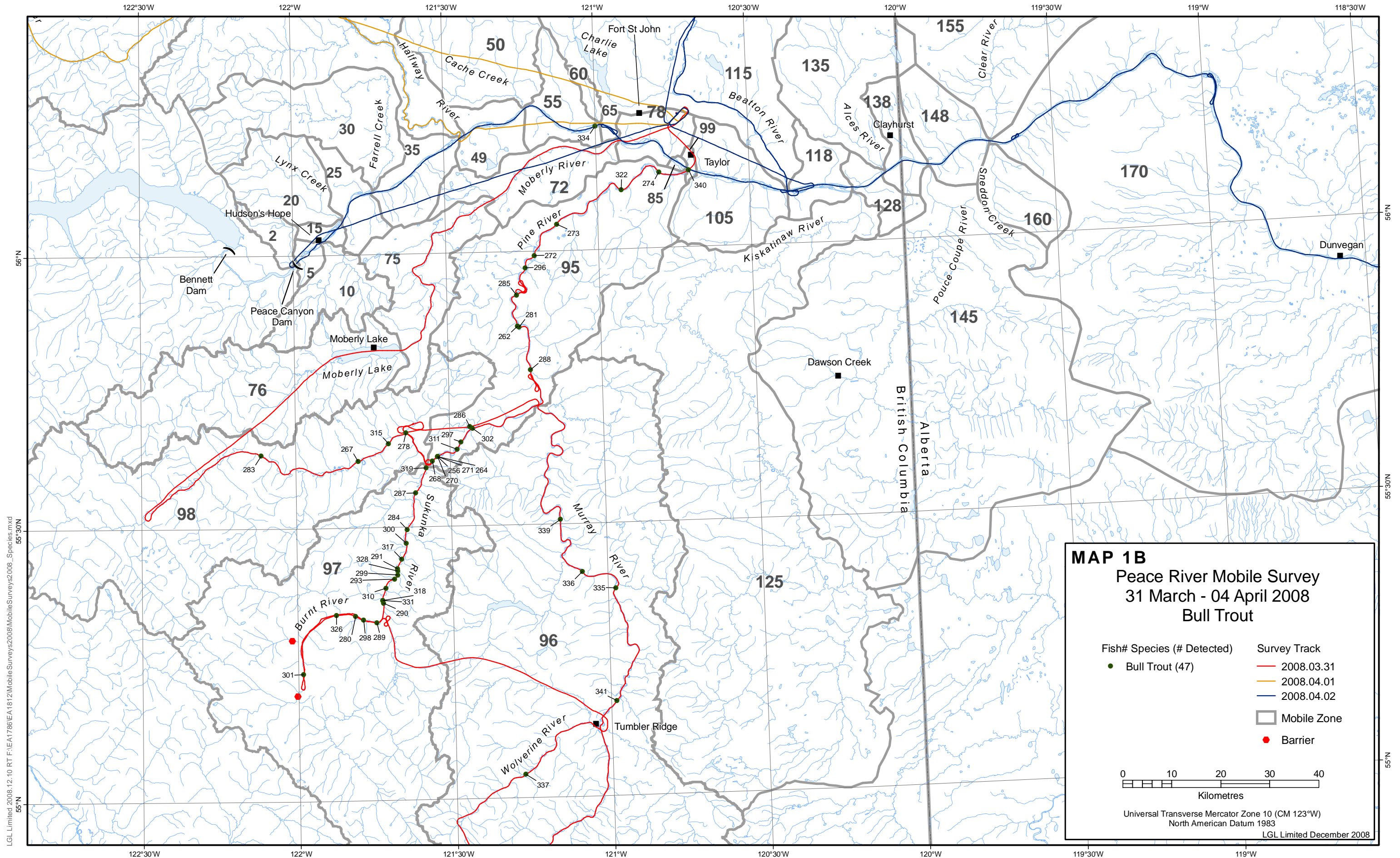


LGL Limited 2008.12.10 RT F:\EA1768\EA1812\MobileSurveys2008\FinalReport\_SurveyTrack.mxd

Map 1A: Peace River mobile survey track (March 31-April 2, 2008)





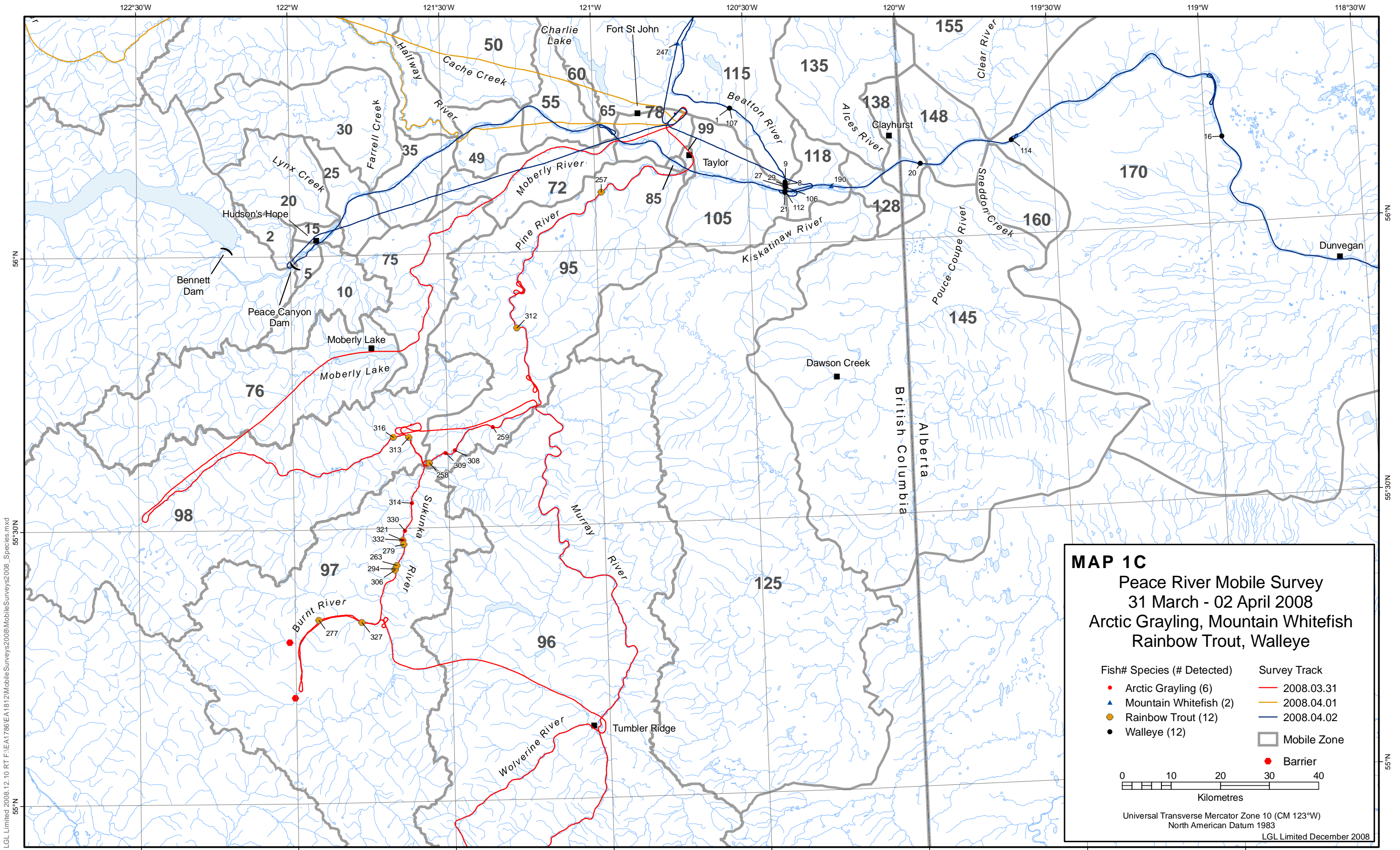


LGL Limited 2008.12.10 RT F:\EA1786\EA1812\Mobile Surveys\2008\Mobile Surveys\2008\_Species.mxd

Map 1B: Mobile survey for bull trout (March 31-April 2, 2008)



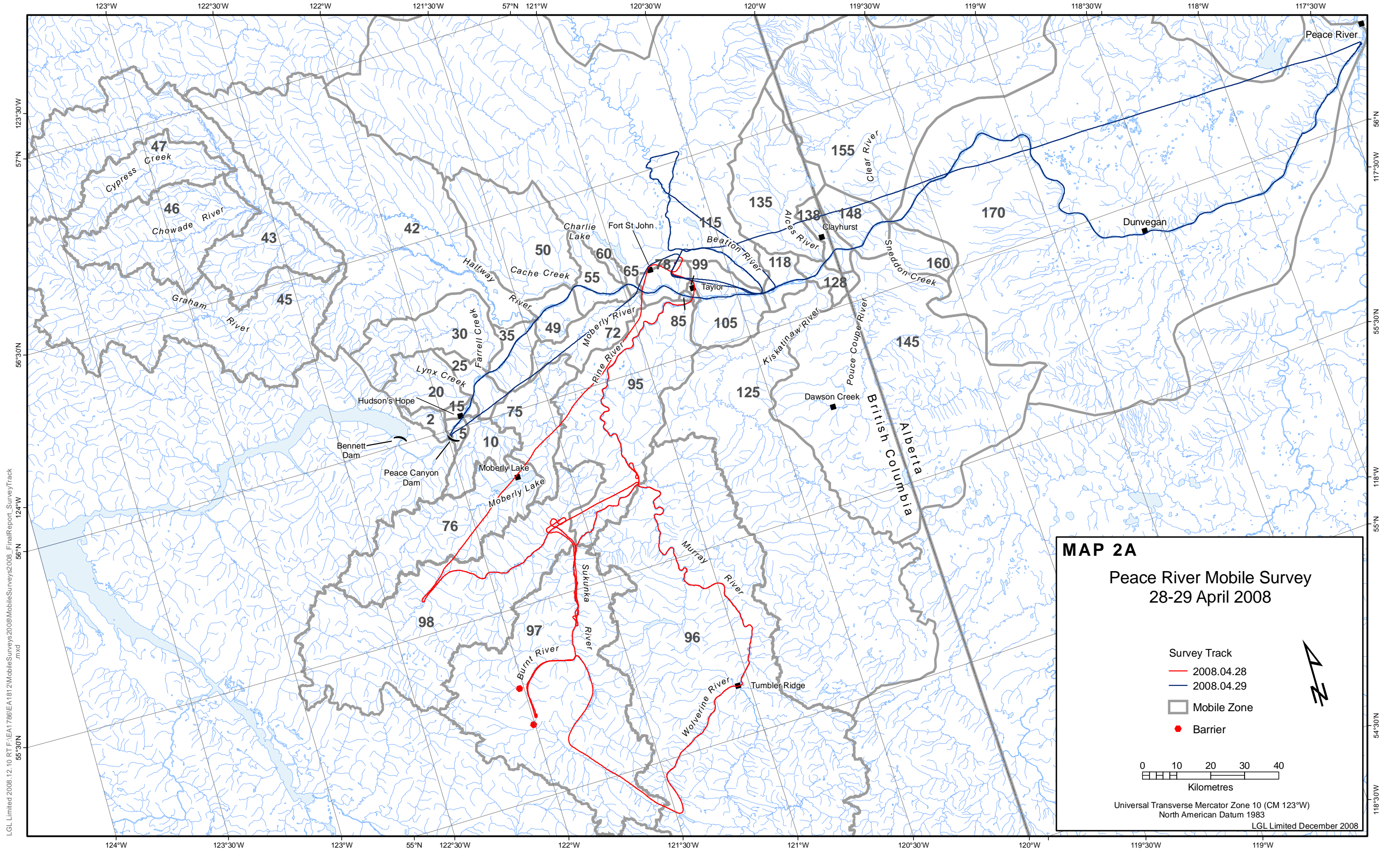




Map 1C: Mobile survey for Arctic grayling, mountain whitefish, rainbow trout and walleye (March 31-April 2, 2008)





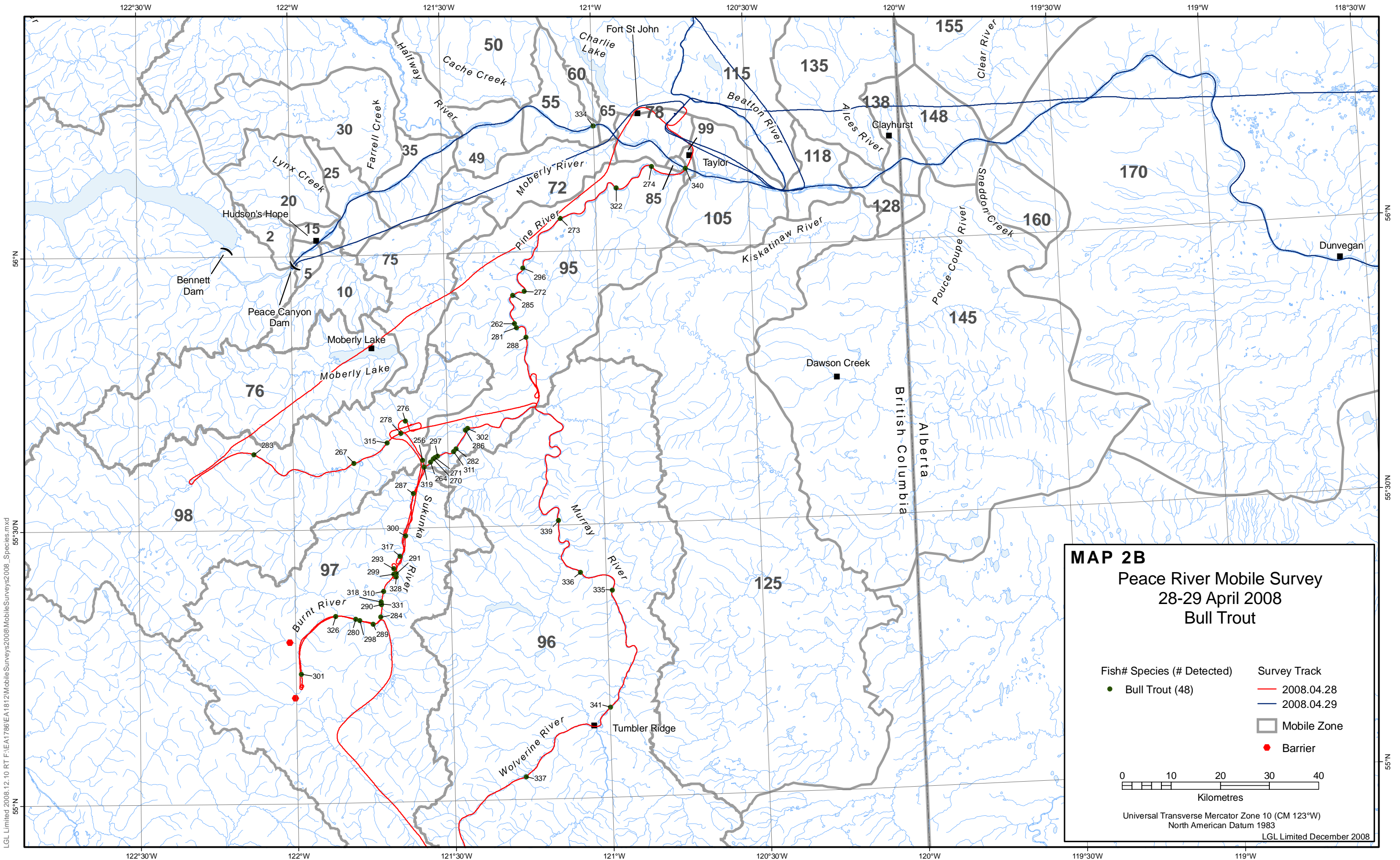


LGL Limited 2008.12.10 RT F:\EA1768\EA1812\MobileSurveys2008\FinalReport\_SurveyTrack.mxd

Map 2A: Peace River mobile survey track (April 28-29, 2008)



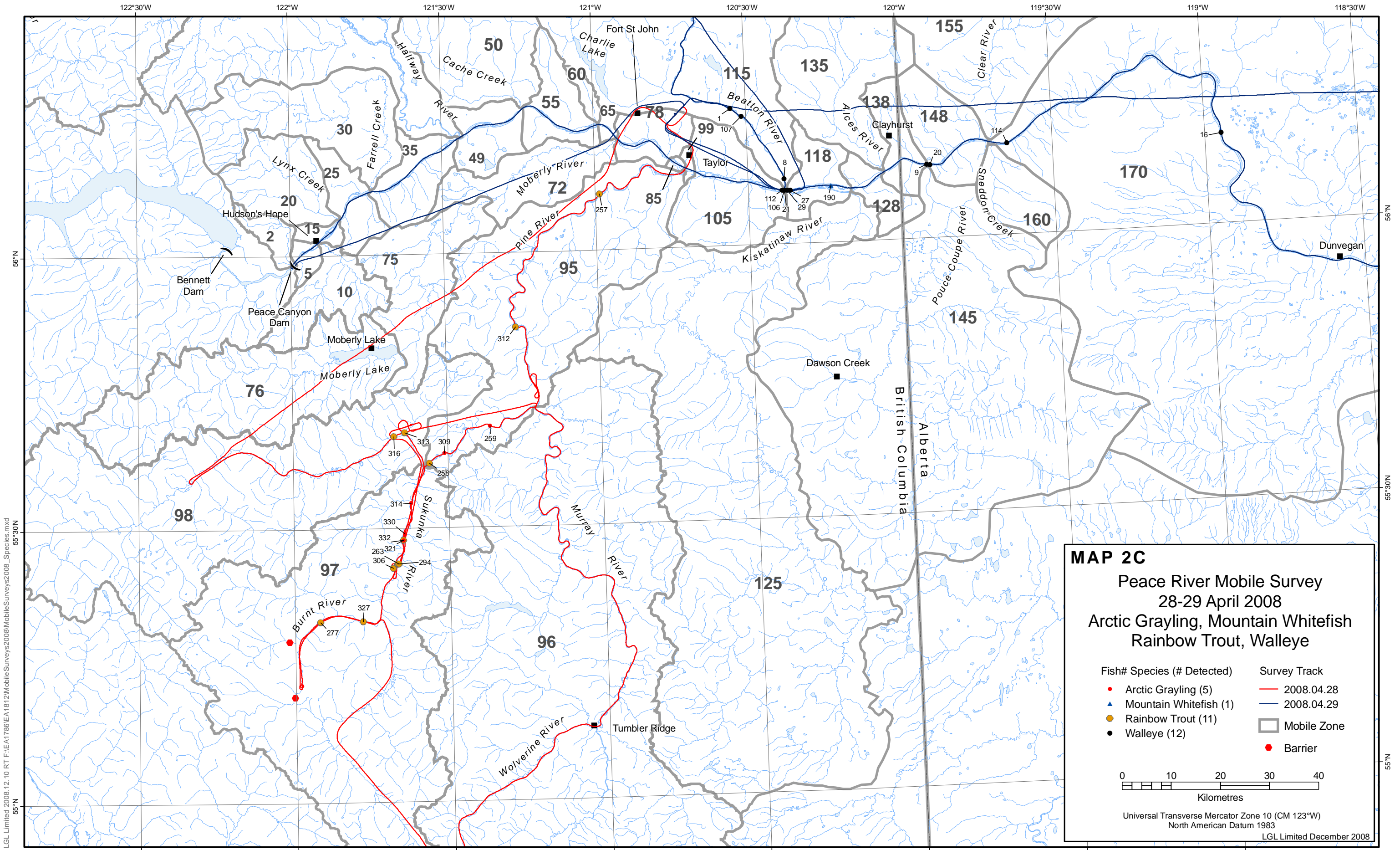




LGL Limited 2008.12.10 RT F:\EA1786\EA1812\Mobile Surveys\2008\Mobile Surveys\2008\_Species.mxd







LGL Limited 2008.12.10 RT F:\EA1786\EA1812\Mobile Surveys\2008\Mobile Surveys\2008\_Species.mxd

Map 2C: Mobile survey for Arctic grayling, mountain whitefish, rainbow trout and walleye (April 28-29, 2008)

## **May Tracks (Maps 3 & 4)**

### *First Track, 13-14 May (Map 3)*

The distribution of the tagged population in the Pine watershed in mid-May was similar to that recorded in late April, with the exception of some bull trout movements. Of the 43 bull trout detected in total, 56% (24) were in the Pine River mainstem (headwaters to mouth), 30% (13) in the Sukunka River, and 12% (5) in the Murray/Wolverine system. The Burnt River was not surveyed due to inclement weather, which may account for the fewer bull trout detected overall compared with that of the previous survey (mid-April). One bull trout (*Tag 272*) moved from the mid-Pine mainstem into the lower Murray River (distance ~40 km). One other bull trout (*Tag 334*), previously detected in the Peace mainstem upstream of the Moberly, was still in the same location.

The distribution of rainbow trout and Arctic grayling in the Pine watershed was essentially unchanged from that of the previous survey.

Walleye showed a marked upstream migration in the Beatton River in May, consistent with that observed in 2006 and 2007 (AMEC & LGL 2008c, 2008d). All six fish detected at the mouth of the Beatton River in late April were now well upstream; the farthest being some 25 km from the mouth. A few tagged walleye remained widely scattered in the Peace mainstem downstream of the Beatton.

### *Second Track, 27-28 May (Map 4)*

No significant outmigration of tagged fish was observed from the Pine River into the Peace mainstem. Only one tagged bull trout (*tag # 273*) moved from the lower Pine River upstream into the Peace mainstem (~30 km from the Pine River mouth). Therefore, a total of two (4%) bull trout had moved into the Peace mainstem at this time, including tag #334.

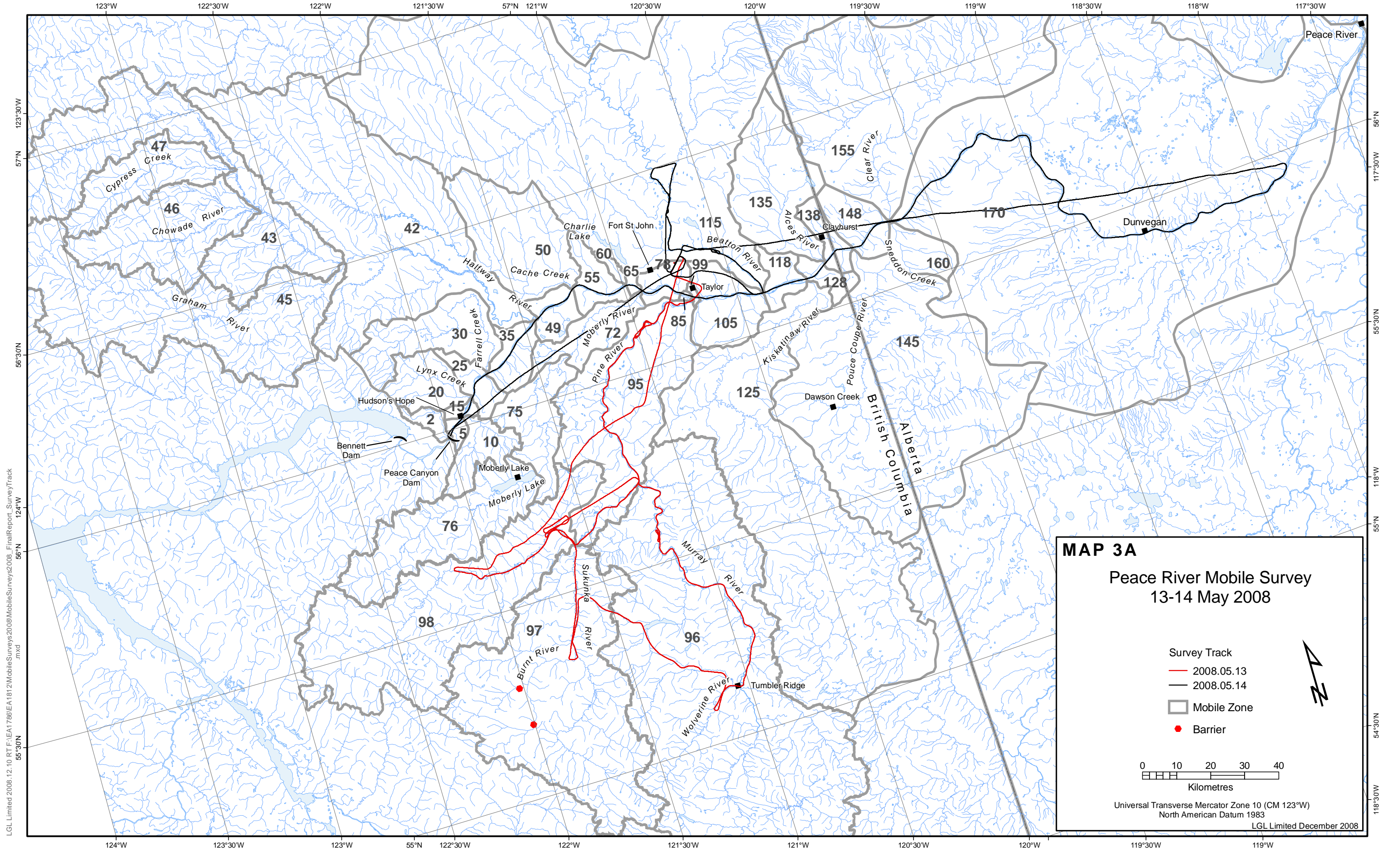
Overall, the distribution of fish detections in the Pine River watershed in late May was similar to the previous surveys conducted in April and May. Of the 47 tagged bull trout detected during the 27-28 May survey, 46% (22) were in the Pine River mainstem from the Sukunka confluence to the mouth, 25% were in the Sukunka River, 13% (6) were in the Murray/Wolverine drainage, and 8% (4) were located in the Pine River mainstem headwaters.

No major change was evident in the distribution of detections for rainbow trout and Arctic grayling compared with the early May survey. Detections for these fish were predominantly in the Sukunka River, with a few widely scattered throughout the Pine River mainstem.

The walleye previously detected in the Beatton River during the early May survey had moved further upstream and were now aggregated, presumably on the spawning grounds (~25 km from the mouth).

The walleye previously detected in the Beatton River during the early May survey had moved further upstream and were now aggregated, presumably on the spawning grounds (~25 km from the mouth).



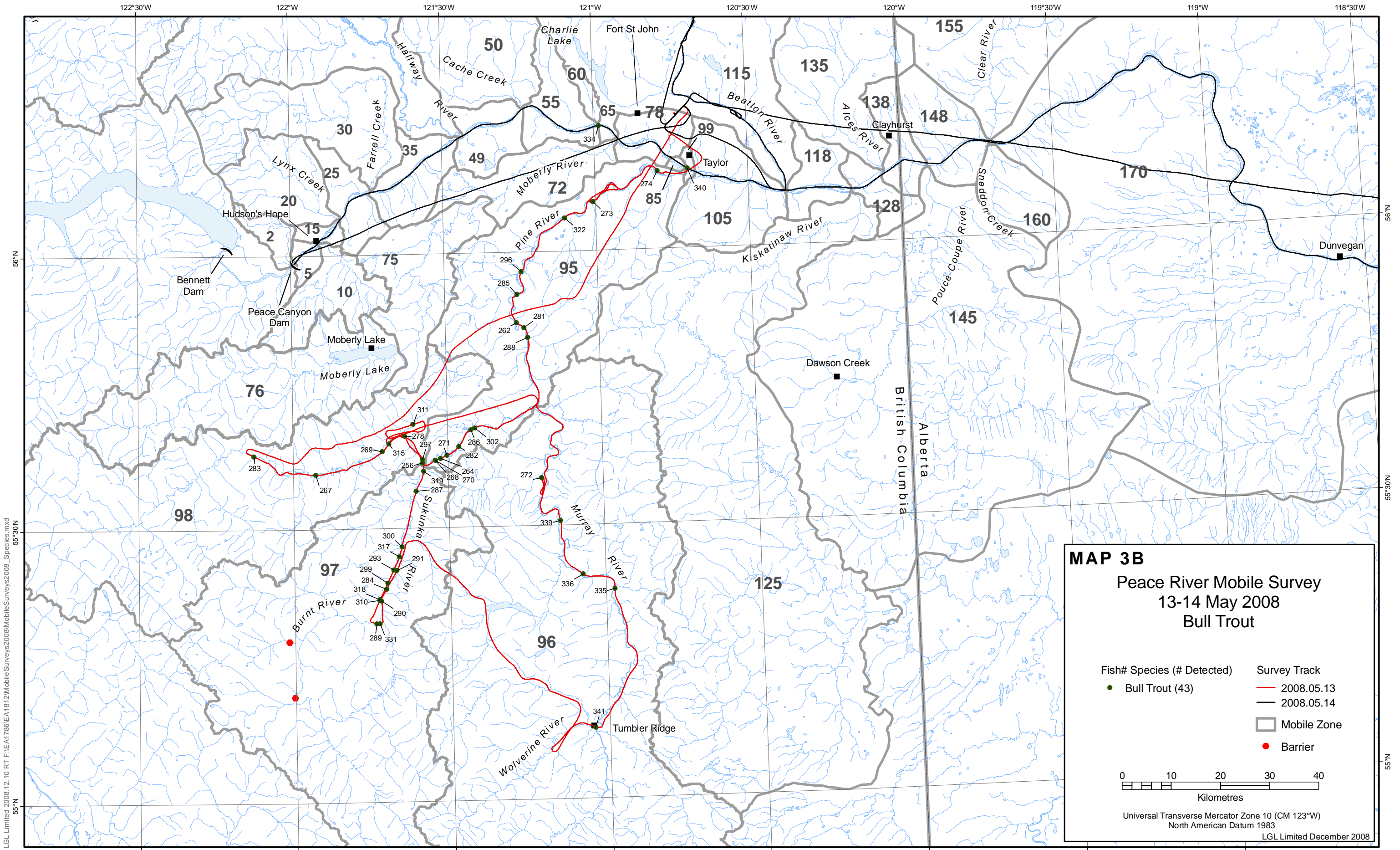


LGL Limited 2008.12.10 RT F:\EA1768\EA1812\MobileSurveys2008\FinalReport\_SurveyTrack.mxd

Map 3A: Peace River mobile survey track (May 13-14, 2008)





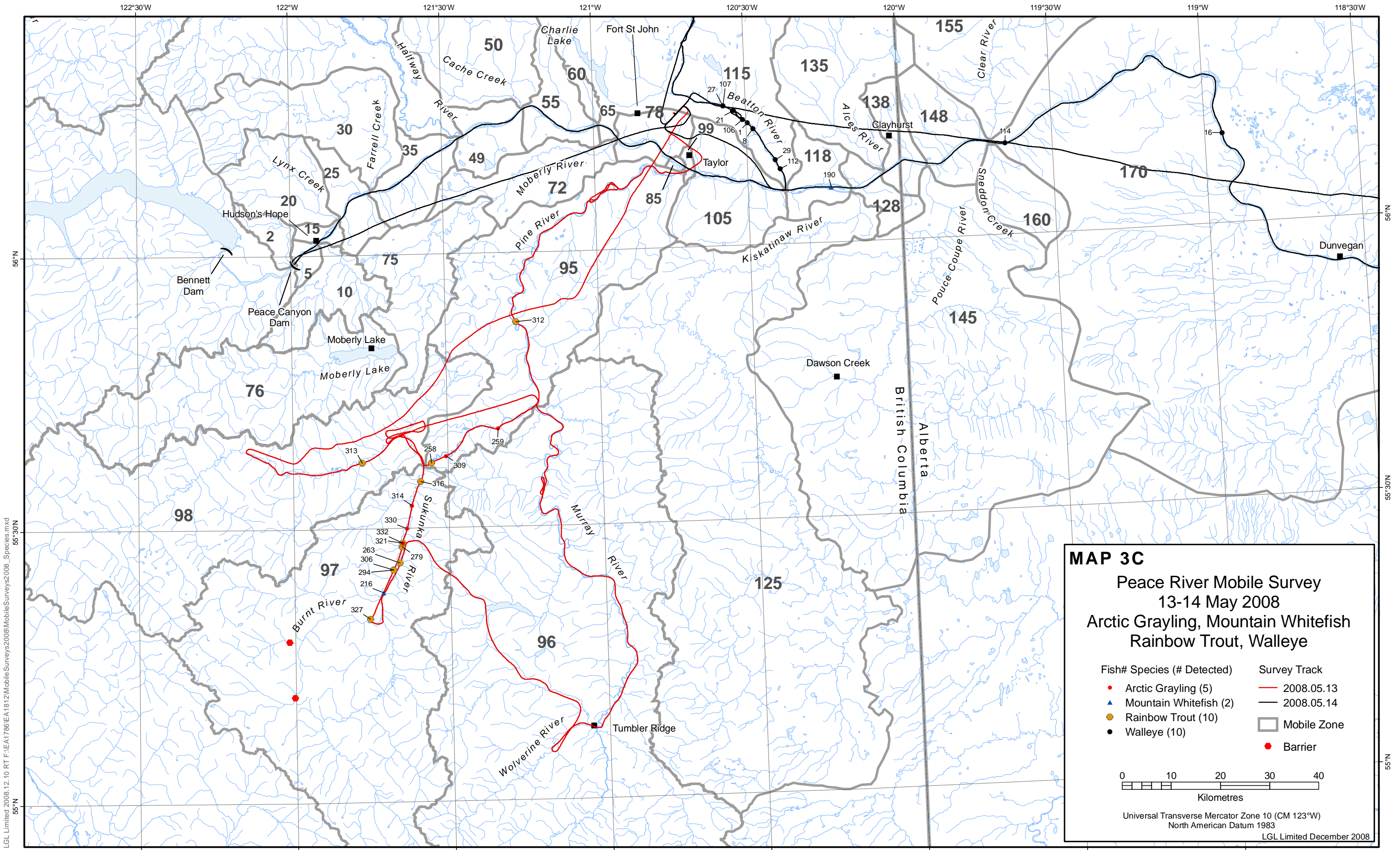


LGL Limited 2008.12.10 RT F:\EA1786\EA1812\Mobile Surveys\2008\Mobile Surveys\2008\_Species.mxd

Map 3B: Mobile survey for bull trout (May 13-14, 2008)







LGL Limited 2008.12.10 RT F:\EA1786EA1812\Mobile Surveys\2008\Mobile Surveys\2008\_Species.mxd 55°30'N

Map 3C: Mobile survey for Arctic grayling, mountain whitefish, rainbow trout and walleye (May 13-14, 2008)

